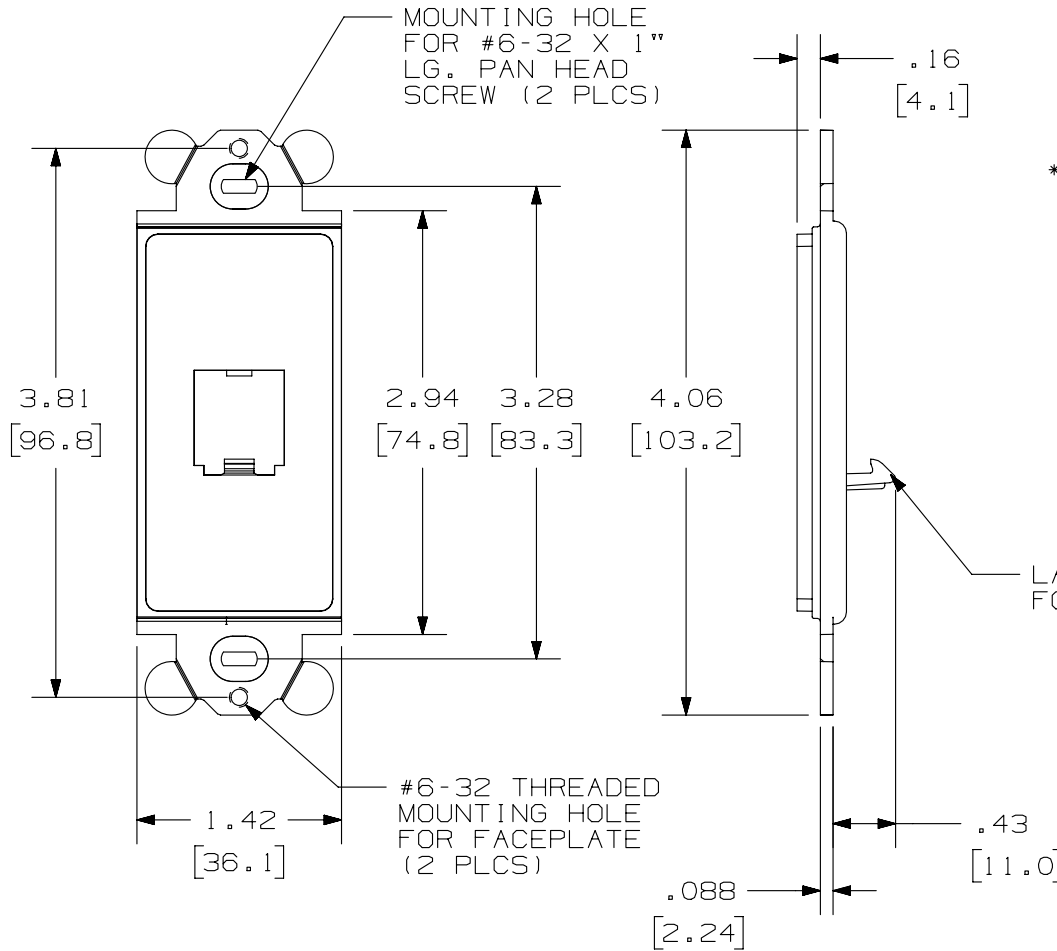
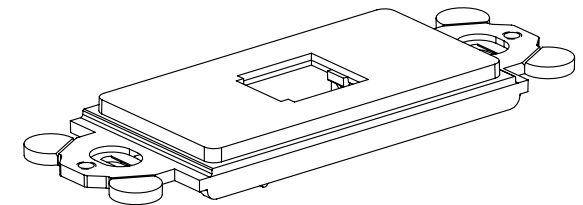


THIS COPY IS PROVIDED ON A RESTRICTED BASIS AND IS NOT TO BE USED IN ANY WAY DETRIMENTAL TO THE INTERESTS OF PANDUIT CORP.



PANDUIT P/N	WEIGHT
CFG1**	.23 LB/10 PCS (105.7 g/10 PCS)

- NOTES:
- **1. SEE CURRENT CATALOG FOR ADDITIONAL PART NUMBER SUFFIXES TO INDICATE COLOR AND OR PACKAGE QUANTITY.
 - SEE CATALOG FOR COMPLETE LIST OF PARTS APPLICABLE FOR USE WITH THIS PART.
 - DIMENSIONS IN PARENTHESES ARE IN METRIC.
 - (2) #6-32 X 1" PANHEAD SCREWS ARE SUPPLIED.



PART NUMBER		CFG1**	
TITLE			
MINI-COM 1 POSITION "GFCI" MODULE FRAME			
CUSTOMER DRAWING			
ITEM REVISION NAME		M00148BA/02	
DATASET FILE NAME		M00148BA_DC/02A	
UNLESS OTHERWISE SPECIFIED, DIMENSIONAL TOLERANCES ARE: IN [mm]		MATERIAL:	
.X ± .03 [.8]		ABS	
.XXX ± .010 [.3]		DRAWING NUMBER:	
ANGLES ±		00148-01	
THIRD ANGLE PROJECTION		SHT 1 OF 1	
DRAWN BY	DATE	CHK	SCALE
RCA	8-26-97	CEF	NONE
REV	DATE	BY	CHK
3	3/20/14	JSP	REFR
MMR	REVISED AND REDRAWN, ALL OTHER REVISIONS HAVE BEEN OMITTED.		00148-01
APR	DESCRIPTION		ECN

D10100DA/14

2

1

2

1

Mouser Electronics

Authorized Distributor

Click to View Pricing, Inventory, Delivery & Lifecycle Information:

[Panduit:](#)

[CFG1BL](#) [CFG1IW](#) [CFG1EI](#) [CFG1WH](#) [CFG1IG](#)