

# DIP CONNECTOR ( $\frac{.300}{(7.62)}$ CENTERS )

DIMENSIONS IN INCHES (MILLIMETERS)  
DO NOT SCALE DRAWING .....

Dwg. No.  
**CWR-130-XX-0000**

### NOTES:

1. Dimensions are in inches; dimensions ( ) are in millimeters.
2. Metric equivalents are given for general information only and are based upon 1.00 inches = (25.4) millimeters.
3. Unless otherwise specified, tolerances are  $\pm .005$  (.13) for three place decimals and  $\pm .01$  (.3) for two place decimals.

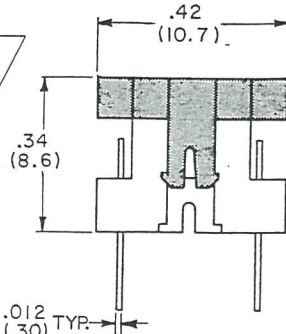
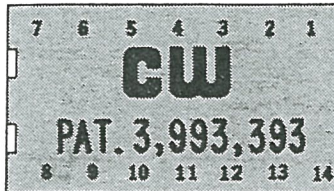
### MATERIALS:

PLASTIC PARTS - UL94V-O Thermoplastic (blue), flame retardant.  
CONTACTS - Phosphor bronze, std.  
CONTACT PLATING - .000010 gold over .000050 nickel, std.

### OPERATING STANDARDS:

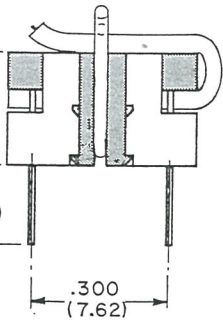
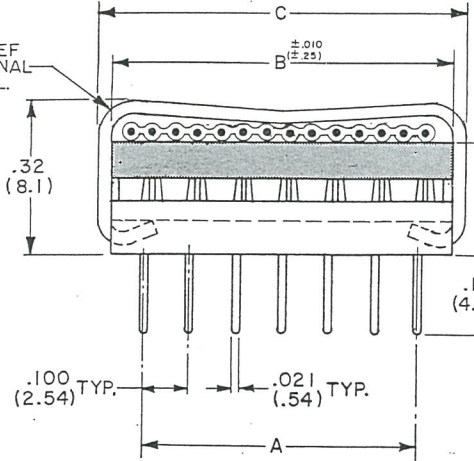
TEMPERATURE RATING - 125°C.  
CONTACT RATING - 1 Ampere.  
DIELECTRIC STRENGTH - Over 500 V.D.C. at sea level.  
CONDUCTORS ACCEPTED - 28-30 AWG solid or stranded.

NOTCHED CORNER ORIENTS No.1 CONTACT LOCATION.  
(14 CONTACT POSITIONS SHOWN; ALSO AVAILABLE WITH 16 POSITIONS.)



CONNECTOR COVER SHOWN  
IN OPEN POSITION

STRAIN RELIEF STRAP OPTIONAL  
STEEL-TIN PL.



CONNECTOR COVER SHOWN  
IN CLOSED POSITION

CONNECTOR DIMENSIONS			
No. of SOLDER POSTS	A	B	C
14	.60 (15.2)	.754 (19.2)	.81 (20.6)
16	.70 (17.8)	.854 (21.7)	.91 (23.1)

## CUSTOMER DRAWING

FORM-B3	0	1	<p><b>ATTENTION</b></p> <p>THIS DRAWING AND ITS ATTACHMENTS, IF ANY, ARE PROPRIETARY TO CW INDUSTRIES AND DESCRIBE DESIGNS THAT ARE CONFIDENTIAL AND MUST NOT BE DISCLOSED UNLESS AUTHORIZED, IN WRITING, BY AN OFFICER OF CW INDUSTRIES.....</p>				<p><b>CW INDUSTRIES</b> Southampton, Pa. 18966</p> <p>TOLERANCES UNLESS OTHERWISE SPECIFIED</p> <p>2 Place Decimal <math>\pm .010</math> METRIC 3 Place Decimal <math>\pm .005</math> 1 Place Dec. <math>\pm .25</math>mm Angles ..... <math>\pm 1^\circ</math> 2 Place Dec. <math>\pm .13</math>mm</p>		<p>Title: DIP CONNECTOR NO. CONTS. PER CONN. DIM. CHART W/.175" SOLDER POSTS</p>	
REVISIONS	RELEASED: LW 3-05-82	REDRAWN, ADDED CUSTOMER DWG. & NEW FORMAT 'B' DCW 3-21-97					Made for: CW IND.	Division: CONNECTOR		
		GG. MAR 25 1997					Drawn by: DGW 3-21-97	Dwg. No. CWR-130-XX-0000		
							Checked by: G. GOLD 3-24-97			
							Approval: A. HOSFIELD 3-25-97			

**MASTER**

# AMEYA360

Components Supply Platform

Authorized Distribution Brand :



Website :

Welcome to visit [www.ameya360.com](http://www.ameya360.com)

Contact Us :

➤ Address :

401 Building No.5, JiuGe Business Center, Lane 2301, Yishan Rd  
Minhang District, Shanghai , China

➤ Sales :

Direct +86 (21) 6401-6692

Email [amall@ameya360.com](mailto:amall@ameya360.com)

QQ 800077892

Skype ameyasales1 ameyasales2

➤ Customer Service :

Email [service@ameya360.com](mailto:service@ameya360.com)

➤ Partnership :

Tel +86 (21) 64016692-8333

Email [mkt@ameya360.com](mailto:mkt@ameya360.com)