**Ordering number** C12049  
**Description** 1

Family	Strada-Forward
Type	Lens
LED	LUXEON T
Color	Clear
Diameter	15.4 x 19.6 mm
Height	8.2 mm
Style	Rectang
Optic Material	PMMA
Holder Material	-
Fastening	-
Status	Ready

FWHM	Asym degrees
Efficiency	92 %
cd/lm	-
Gerber File	Available

[http://www.ledil.fi/Strada-F\\_Fully\\_Asymmetrical\\_Forward\\_Thro](http://www.ledil.fi/Strada-F_Fully_Asymmetrical_Forward_Thro)

**NOTE: The typical divergence will be changed by different color, chip size and chip position tolerance. The typical total divergence is the full angle measured where the luminous intensity is half of the peak value.**

D

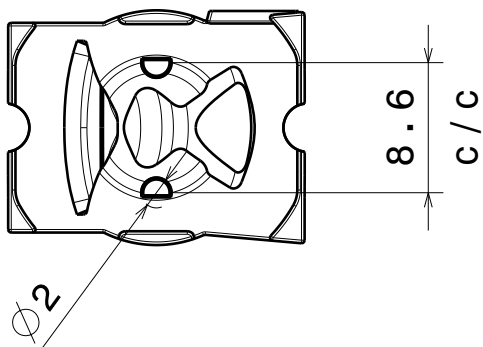
C

B

A

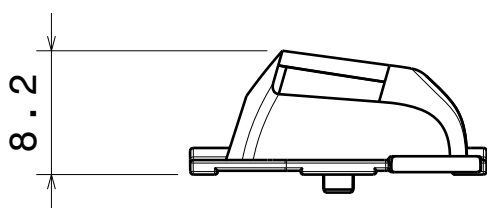
4

4



3

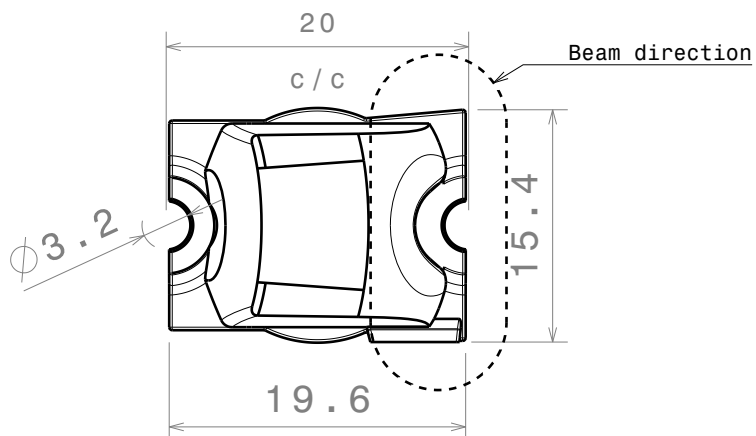
3



2

2

MATERIALS  
Lens: PMMA



This drawing is our property.  
It can't be reproduced  
or communicated without  
our written agreement.



Ledil Oy  
Salorankatu 10  
24240 SALO  
Finland

## DRAWING TITLE

Datasheet Strada-FT lens

DRAWN BY

ah

DATE

6.7.2012

CHECKED BY

ah

DATE

6.7.2012

DESIGNED BY

hh

DATE

15.3.2011

SIZE

A4

DRAWING NUMBER

REV

2

SCALE

2:1

WEIGHT (g)

SHEET

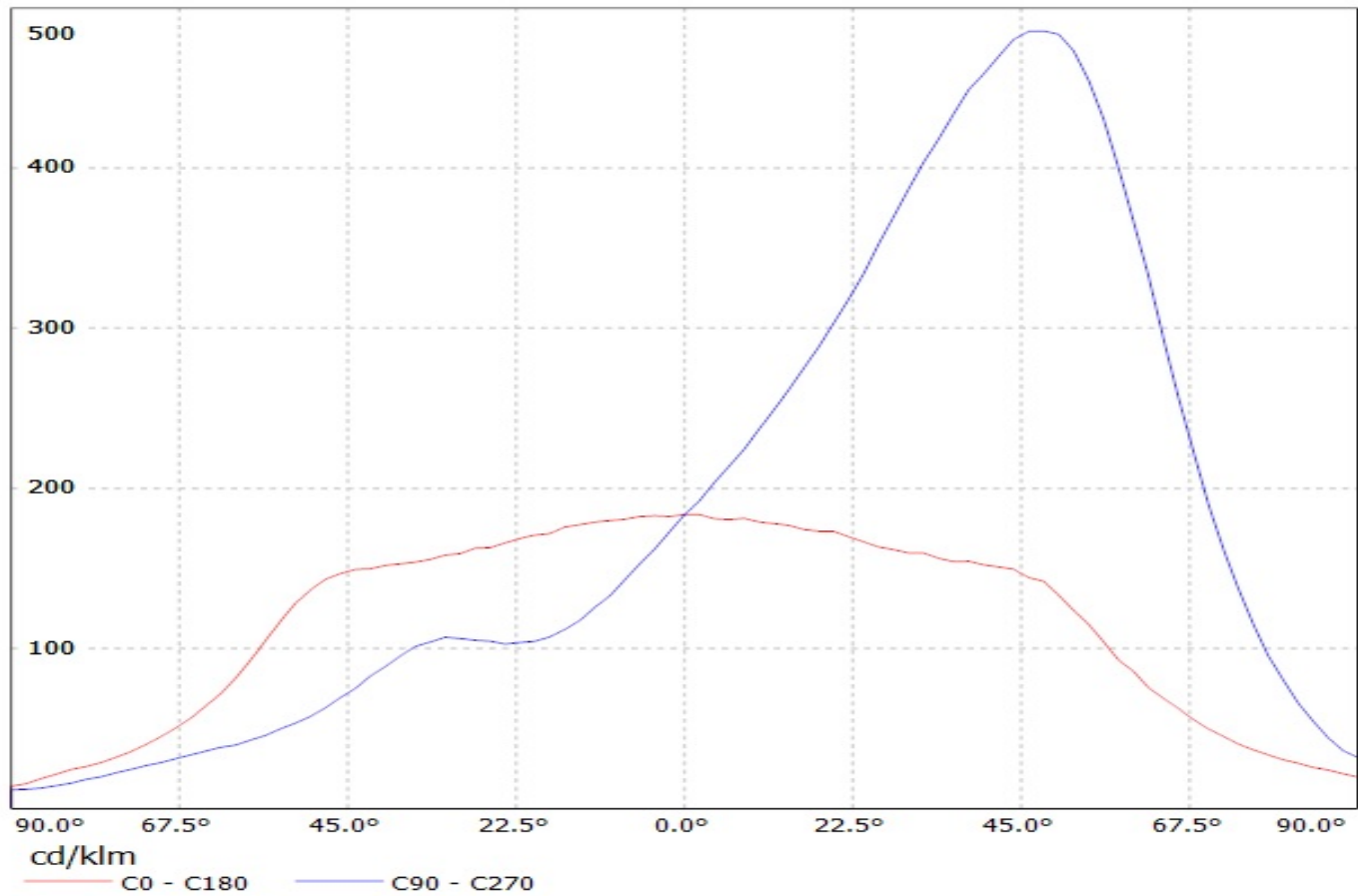
1/1

D

A

1

Luminaire: Ledil Oy C12049\_STRADA-FT (Luxeon T 71lm @ 250mA) Efficiency=92%  
Lamps: 1 x Luxeon T 71lm @ 250mA (LXH8-FW30-3) CCT=3158K P=0,75W I=250mA



Luminaire: Ledil Oy C12049\_STRADA-FT (Luxeon T 71lm @ 250mA) Efficiency=92%  
Lamps: 1 x Luxeon T 71lm @ 250mA (LXH8-FW30-3) CCT=3158K P=0,75W I=250mA

