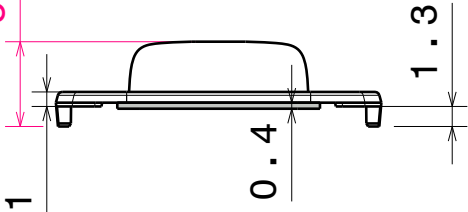
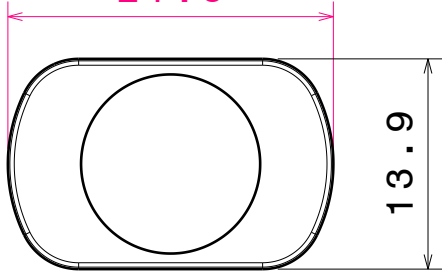


5.9

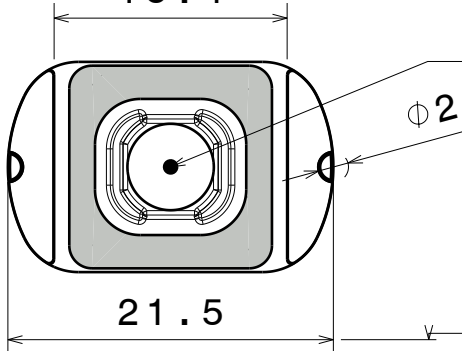


21.5



13.9

15.4



Led position

2

Positionpins center to center

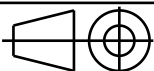
INDEX	PART NO	DESCRIPTION	MATERIAL	COLOUR
1	CA13747	KIKI -A	None	

Tolerances if not otherwise shown
According to DIN ISO 2768-1
Linear measures:
Up to 30mm class M, otherwise class C.
According to DIN ISO 2768-2
Form and position: class L

LEDiL

Ledil Oy
Salorankatu 10
FIN 24240 SALO
Finland

THIRD ANGLE PROJECTION:



DRAWING TITLE

CA13747_KIKI-A

This drawing is the property
of LEDiL Oy. It may not be
reproduced, copied or
communicated without a written
agreement with LEDiL Oy."

SIZE

PART NUMBER

A4

CA13747

SCALE

2:1

WEIGHT

-

SHEET

1/1

D

A

Mouser Electronics

Authorized Distributor

Click to View Pricing, Inventory, Delivery & Lifecycle Information:

Ledil:

[CA14005_KIKI-B](#)