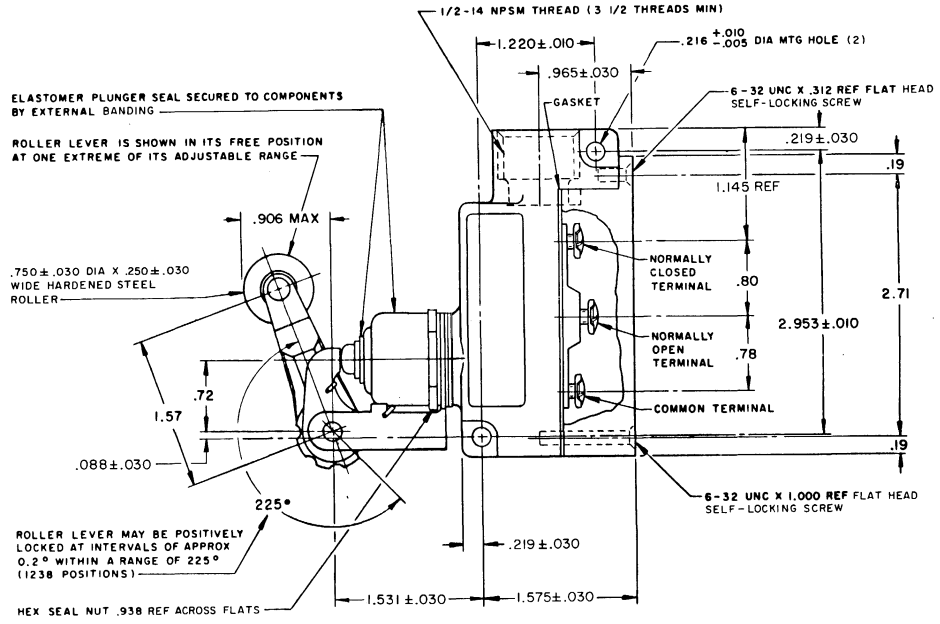
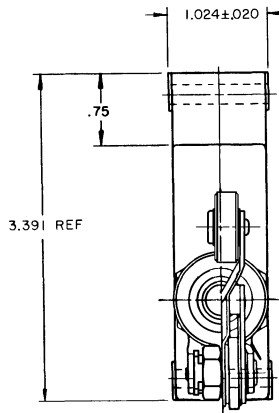


MICRO SWITCH
 FREEPORT, ILLINOIS, U.S.A.
 A DIVISION OF HONEYWELL
 FED. MFG. CODE 8198

SWITCH - ENCLOSED.

CATALOG LISTING
BZG1-2RN234

M BZG1-2RN234
 DRAWING NUMBER
 ISSUE 4
 REVISIONS
 A 0655843 TSM 3 NOV 83
 B 2072977 SAA 22
 C 0081530 A* 11 MAR 97
 FORMTEK DRAWN
 T J O 17 JUL 89 CHECK TSK. 17 JULY 89
 RELEASE NO. PR-17546
 REFERENCE



THIS DRAWING COVERS A PROPRIETARY ITEM AND IS THE PROPERTY OF MICRO SWITCH, A DIVISION OF MINNEAPOLIS HONEYWELL REGULATOR CO. THIS DRAWING IS NOT TO BE COPIED OR USED WITHOUT THE APPROVAL OF MICRO SWITCH.

CHARACTERISTICS	ELECTRICAL DATA	SCALE FULL
OPERATING FORCE ----- 14-26 OZ	CONTACT ARRANGEMENT S P D T	DO NOT SCALE PRINT
RELEASE FORCE ----- 10 OZ MIN	15A - 125, 250 OR 480 VAC; 2A - 600 VAC; 1 RHP-775 VAC; 1.4HP-250 VAC	UNLESS OTHERWISE NOTED
PRETRAVEL ----- .188 MAX	CODE L74 1 2A-125 VDC; 1 7A 250 VDC	DIMENSIONS ARE IN INCHES
DIFFERENTIAL TRAVEL ----- .006 MAX		TOLERANCES ARE:
OVERTRAVEL ----- .219 MIN		ONE PLACE (.01) ±.030
SWITCH - BASIC REPLACEMENT --- BZ-2RN7027		TWO PLACE (.001) ±.018
		THREE PLACE (.000) ±.008
		ANGLES 2
		WEIGHT

- NOTES**
- 1 - 6-32 UNC X .219 REF BINDING HEAD TERMINAL SCREW AND CUPWASHER (3)
 - 2 - ROLLER LEVER BRACKET ASSEMBLY MAY BE SET AT ANY POSITION AROUND AXIS OF PLUNGER