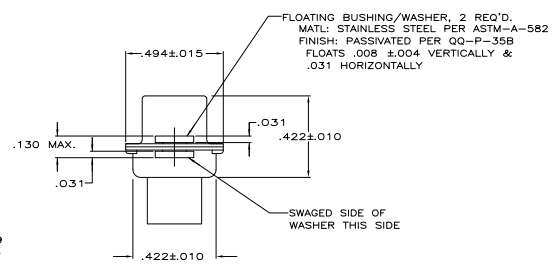
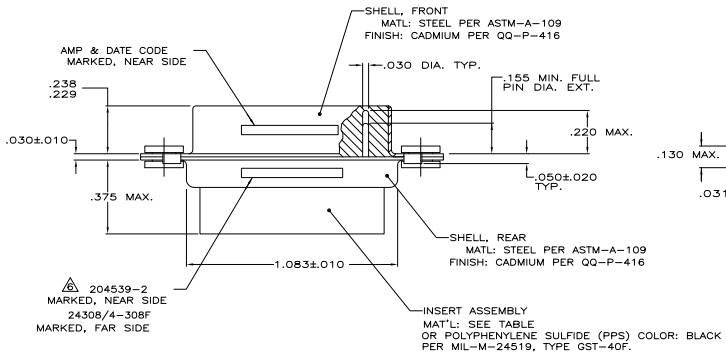
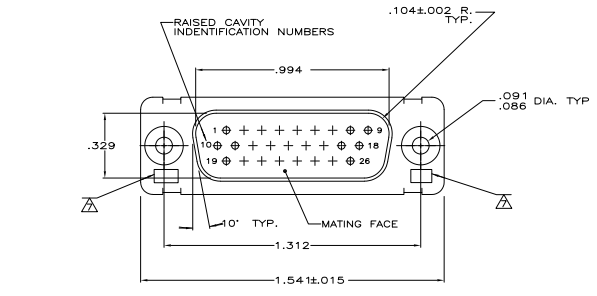


REVIEWS		DATE	BY
DESIGN	W. J. BALLEW		
STAMP			



1. THIS PLUG IS DESIGNED TO CONFORM TO THE LATEST ISSUE OF MIL-C-24308
 2. MAX WIRE INSUL. TO BE USED WITH THIS PLUG IS .054 DIA.
 3. METAL RETENTION CLIPS ARE INCLUDED IN INSERTS
 4. PACKAGE MARKED M 24308/4-330F
 5. THIS PLUG WILL ACCEPT SIZE 22 PIN CONTACT M 24308/13 OR AMP # 204370
- AMP PART NO. MARKED ON CONNECTOR REPRESENTS KIT NUMBER WITH CONTACTS
 UL/CSA DESIGNATION MARKED IN THIS AREA.

OBSOLETE	PHENOLIC, COLOR: BLACK	204527-2
	POLYPHENYLENE SULFIDE (PPS) GST-40F PER MIL-M-24519 OR GLASS FILLED POLYESTER TPESD13G30 PER ASTM D5927 COLOR: BLACK	204527-1
	INSERT MATERIAL	PART NO.

THIS DRAWING IS A CONTROLLED DOCUMENT. DATE: 12-3-87. BY: W. J. BALLEW. REV: 1-28-88. PART: 204527-1. CUSTOMER DRAWING.

TYSO Electronics Corporation
 1100 N. 17th St., Harrisburg, PA 17102-3608
 AMPLITE PLUG FOR PIN CONTACTS
 18-DENSITY D CONN. SIZE 2, SERIES 90
 WITH FLOAT BUSHINGS
 SIZE: ONE ONLY DRAWING NO: A100779 (G)=204527
 SHEET: 4-1 OF 1