

Distributed by:

**JAMECO**<sup>®</sup>  
ELECTRONICS

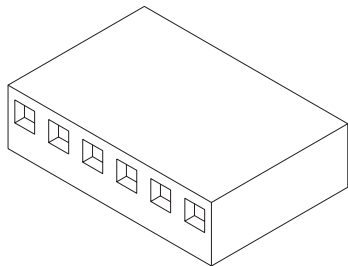
**www.Jameco.com ♦ 1-800-831-4242**

The content and copyrights of the attached  
material are the property of its owner.

Jameco Part Number 1965453

## 2.54mm (.100") Pitch KK<sup>®</sup> Crimp Terminal Housing

### 2695/6471



#### Features and Benefits

- Sizes 1 to 25 circuits
- 6471 is end-to-end stackable (2 housings only)
- 2695 version with or without locking ramp and polarizing ribs

#### Reference Information

Product Specification: PS-10-07  
 Packaging: Bag  
 UL File No.: E29179  
 CSA File No.: LR19980  
 Mates With: Molex KK 2.54mm (.100") pitch headers and 0.04mm (.025") pins  
 Use With: 2695—2759, 6459 or 41572 terminals  
 6471—4809 terminals  
 Designed In: Inches

#### Electrical\*

Voltage: 250V  
 Current: Phosphor Bronze—4.0A max.  
 Brass—2.5A max.  
 Dielectric Withstanding Voltage: 1500V AC  
 Insulation Resistance: 50K Megohms min.

#### Mechanical\*

Contact Insertion Force: 681g (1.5 lb) max.  
 Contact Retention to Housing: 3.63kg (8 lb) min.  
 Mating Force: 199g max.  
 Unmating Force: 57g min.  
 Normal Force: 200g min.

#### Physical

Housing: Nylon, UL 94V-0  
 Operating Temperature: 0 to +75°C

Circuits	Order No.			
	2695		6471	
	With Locking Ramp	With Locking Ramp and Polarizing Ribs	Without Locking Ramp or Ribs	With Locking Ramp and Polarizing Ribs <sup>†</sup>
1			<a href="#">22-01-2011</a>	
2	<a href="#">22-01-2027</a>	<a href="#">22-01-3027</a>	<a href="#">22-01-2021</a>	<a href="#">22-01-2025</a>
3	<a href="#">22-01-2037</a>	<a href="#">22-01-3037</a>	<a href="#">22-01-2031</a>	<a href="#">22-01-2035</a>
4	<a href="#">22-01-2047</a>	<a href="#">22-01-3047</a>	<a href="#">22-01-2041</a>	<a href="#">22-01-2045</a>
5	<a href="#">22-01-2057</a>	<a href="#">22-01-3057</a>	<a href="#">22-01-2051</a>	<a href="#">22-01-2055</a>
6	<a href="#">22-01-2067</a>	<a href="#">22-01-3067</a>	<a href="#">22-01-2061</a>	<a href="#">22-01-2065</a>
7	<a href="#">22-01-2077</a>	<a href="#">22-01-3077</a>	<a href="#">22-01-2071</a>	<a href="#">22-01-2075</a>
8	<a href="#">22-01-2087</a>	<a href="#">22-01-3087</a>	<a href="#">22-01-2081</a>	<a href="#">22-01-2085</a>
9	<a href="#">22-01-2097</a>	<a href="#">22-01-3097</a>	<a href="#">22-01-2091</a>	<a href="#">22-01-2095</a>
10	<a href="#">22-01-2107</a>	<a href="#">22-01-3107</a>	<a href="#">22-01-2101</a>	<a href="#">22-01-2105</a>
11	<a href="#">22-01-2117</a>	<a href="#">22-01-3117</a>	<a href="#">22-01-2111</a>	<a href="#">22-01-2115</a>
12	<a href="#">22-01-2127</a>	<a href="#">22-01-3127</a>	<a href="#">22-01-2121</a>	<a href="#">22-01-2125</a>
13	<a href="#">22-01-2137</a>	<a href="#">22-01-3137</a>	<a href="#">22-01-2131</a>	<a href="#">22-01-2135</a>

Note: When mating polarizing rib version with breakaway friction lock header or polarizing wall series, the end friction lock or polarizing wall of header must be removed

\* When mated with Molex product only

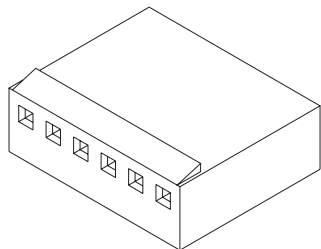
<sup>†</sup> For circuits 19-28, contact Molex

Circuits	Order No.			
	2695		6471	
	With Locking Ramp	With Locking Ramp and Polarizing Ribs	Without Locking Ramp or Ribs	With Locking Ramp and Polarizing Ribs <sup>†</sup>
14	<a href="#">22-01-2147</a>	<a href="#">22-01-3147</a>	<a href="#">22-01-2141</a>	<a href="#">22-01-2145</a>
15	<a href="#">22-01-2157</a>	<a href="#">22-01-3157</a>	<a href="#">22-01-2151</a>	<a href="#">22-01-2155</a>
16	<a href="#">22-01-2167</a>	<a href="#">22-01-3167</a>	<a href="#">22-01-2161</a>	<a href="#">22-01-2165</a>
17	<a href="#">22-01-2177</a>	<a href="#">22-01-3177</a>	<a href="#">22-01-2171</a>	<a href="#">22-01-2175</a>
18	<a href="#">22-01-2187</a>	<a href="#">22-01-3187</a>	<a href="#">22-01-2181</a>	<a href="#">22-01-2185</a>
19	<a href="#">22-01-2197</a>	<a href="#">22-01-3197</a>	<a href="#">22-01-2191</a>	
20	<a href="#">22-01-2207</a>	<a href="#">22-01-3207</a>	<a href="#">22-01-2201</a>	
21	<a href="#">22-01-2217</a>	<a href="#">22-01-3217</a>	<a href="#">22-01-2211</a>	
22	<a href="#">22-01-2227</a>	<a href="#">22-01-3227</a>	<a href="#">22-01-2221</a>	
23	<a href="#">22-01-2237</a>	<a href="#">22-01-3237</a>	<a href="#">22-01-2231</a>	
24	<a href="#">22-01-2247</a>	<a href="#">22-01-3247</a>	<a href="#">22-01-2241</a>	
25	<a href="#">22-01-2257</a>	<a href="#">22-01-3257</a>	<a href="#">22-01-2251</a>	

	Order No.
Polarizing Key	<a href="#">15-04-9209</a>
Polarizing Peg	<a href="#">15-04-9210</a>

## 2.54mm (.100") Pitch KK<sup>®</sup> Crimp Terminal Housing

### 7880 High Pressure



#### Features and Benefits

- Sizes 1 to 28 circuits
- Standard with locking ramp
- Suitable for high vibration requirements

#### Reference Information

Product Specification: PS-7879  
 Packaging: Bag  
 UL File No.: E29179  
 CSA File No.: LR19980  
 Mates With: Molex KK 2.54mm (.100") pitch headers  
 Use With: 7879 terminals  
 Designed In: Inches

#### Electrical\*

Voltage: 250V  
 Current: 2.5A  
 Dielectric Withstanding Voltage: 1500V AC  
 Insulation Resistance: 500K Megohms min.

#### Mechanical\*

Contact Insertion Force: 1.5 lb max.  
 Contact Retention to Housing: 8 lb min.  
 Mating Force: 475g max.  
 Unmating Force: 100g min.  
 Normal Force: 430g min.

#### Physical

Housing: Nylon, UL 94V-0  
 Operating Temperature: -0 to +75°C

Circuits	Order No.
1	<a href="#">10-11-2013</a>
2	<a href="#">10-11-2023</a>
3	<a href="#">10-11-2033</a>
4	<a href="#">10-11-2043</a>
5	<a href="#">10-11-2053</a>
6	<a href="#">10-11-2063</a>
7	<a href="#">10-11-2073</a>
8	<a href="#">10-11-2083</a>
9	<a href="#">10-11-2093</a>
10	<a href="#">10-11-2103</a>

Circuits	Order No.
11	<a href="#">10-11-2113</a>
12	<a href="#">10-11-2123</a>
13	<a href="#">10-11-2133</a>
14	<a href="#">10-11-2143</a>
15	<a href="#">10-11-2153</a>
16	<a href="#">10-11-2163</a>
17	<a href="#">10-11-2173</a>
18	<a href="#">10-11-2183</a>
19	<a href="#">10-11-2193</a>

Circuits	Order No.
20	<a href="#">10-11-2203</a>
21	<a href="#">10-11-2213</a>
22	<a href="#">10-11-2223</a>
23	<a href="#">10-11-2233</a>
24	<a href="#">10-11-2243</a>
25	<a href="#">10-11-2253</a>
26	<a href="#">10-11-2263</a>
27	<a href="#">10-11-2273</a>
28	<a href="#">10-11-2283</a>

\* When mated with Molex product only

Note: In the Far East this housing has a different Engineering Series No. and different Order No.



# PRODUCT SPECIFICATION

## 1.0 SCOPE

This Product Specification covers the 2.54 mm (.100 inch) centerline (pitch) 0.64 mm (.025) square pin headers when mated with either printed circuit board (PCB) connectors or connectors terminated with 22 to 28 AWG wire using crimp technology.

## 2.0 PRODUCT DESCRIPTION

### 2.1 PRODUCT NAME AND SERIES NUMBERS

Crimp Terminals: 2759, 41572, 6459  
Crimp Housings: 2695  
PCB Connectors: 4455, 42625  
Headers: 4030, 4094, 6373, 7478, 42225, 42226, 42227, 42228, 42152, 42153, 42375, 42376, 42377, 42624.  
Other products conforming to this specification are noted on the individual drawings.

### 2.2 DIMENSIONS, MATERIALS, PLATINGS AND MARKINGS

Terminal Material: Brass or Phos. Bronze (for Max performance use phos bronze material.)  
Housing: Nylon or Polyester  
Pins: Brass or Phos. Bronze  
For more information on dimensions, materials, and plating see the individual drawings.

### 2.3 SAFETY AGENCY APPROVALS

UL File Number ..... E29179  
CSA .....LR19980

## 3.0 APPLICABLE DOCUMENTS AND SPECIFICATIONS

None

## 4.0 RATINGS

### 4.1 VOLTAGE

250 Volts

**4.2 CURRENT AND APPLICABLE WIRES** (Current is dependent on connector size, contact material, plating, ambient temperature, printed circuit board characteristics and related factors. Actual current rating is application dependent and should be evaluated for each application.)

AWG	Amps (Max)	Outside Insulation Diameter
22	4.00	See Drawings
24	3.75	See Drawings
26	3.50	See Drawings
28	3.00	See Drawings

### 4.3 TEMPERATURE (ambient + 30° temp rise)

Operating: 0°C to +75°C  
Nonoperating: - 40°C to +105°C

REVISION: <b>P3</b>	EGR/ECN INFORMATION: EC No: <b>UCP2008-0956</b> DATE: <b>11/6/2007</b>	TITLE: <b>PRODUCT SPECIFICATION .100 CENTER KK CONNECTORS</b>	SHEET No. <b>1 of 5</b>
DOCUMENT NUMBER: <b>PS-10-07</b>	CREATED / REVISED BY: <b>ADERR</b>	CHECKED BY: <b>JBELL</b>	APPROVED BY: <b>FSMITH</b>



# PRODUCT SPECIFICATION

## 5.0 PERFORMANCE

### 5.1 ELECTRICAL REQUIREMENTS

DESCRIPTION	TEST CONDITION	REQUIREMENT
Contact Resistance (Low Level)	Mate connectors: apply a maximum voltage of 20 mV and a current of 100 mA.	10 milliohms MAXIMUM [initial]
Contact Resistance of Wire Termination (Low Level)	Terminate the applicable wire to the terminal and measure wire using a voltage of 20 mV and a current of 100 mA.	2 milliohms MAXIMUM [initial]
Insulation Resistance	Unmate & unmount connectors: apply a voltage of 500 VDC between adjacent terminals and between terminals to ground.	1000 Megohms MINIMUM
Dielectric Withstanding Voltage	Unmate connectors: apply a voltage of {two times the rated voltage plus 1000 volts} VAC for 1 minute between adjacent terminals and between terminals to ground.	No breakdown
Capacitance	Measure between adjacent terminals at 1 MHz.	2 picofarads MAXIMUM
Temperature Rise (via Current Cycling)	Mate connectors: measure the temperature rise at the rated current after: 1) 96 hours (steady state) 2) 240 hours (45 minutes ON and 15 minutes OFF per hour) 3) 96 hours (steady state)	Temperature rise: +30°C MAXIMUM

REVISION: <b>P3</b>	EGR/ECN INFORMATION: EC No: <b>UCP2008-0956</b> DATE: <b>11/6/2007</b>	TITLE: <b>PRODUCT SPECIFICATION .100 CENTER KK CONNECTORS</b>	SHEET No. <b>2 of 5</b>
DOCUMENT NUMBER: <b>PS-10-07</b>	CREATED / REVISED BY: <b>ADERR</b>	CHECKED BY: <b>JBELL</b>	APPROVED BY: <b>FSMITH</b>



# PRODUCT SPECIFICATION

## 5.2 MECHANICAL REQUIREMENTS

DESCRIPTION	TEST CONDITION	REQUIREMENT		
Connector Mate and Unmate Forces	Per circuit when mated to an .025 Sq. pin. Mate and unmate connector (male to female) at a rate of 25 ± 6 mm (1 ± ¼ inch) per minute.	1.95 N (0.438 lbf) MAXIMUM insertion force & 0.56 N (0.125 lbf) MINIMUM withdrawal force		
Terminal Retention Force (in Housing)	Axial pullout force on the terminal in the housing at a rate of 25 ± 6 mm (1 ± ¼ inch) per minute. (Forces will change with platings and materials.)	17.8 N (4.0 lbf) MINIMUM withdrawal force		
Terminal Insertion Force (into Housing)	Apply an axial insertion force on the terminal at a rate of 25 ± 6 mm (1 ± ¼ inch) per minute. (Forces will change with platings and materials.)	6.67 N (1.5 lbf) MAXIMUM insertion force		
Durability	Mate connectors up to 25 cycles at a maximum rate of 10 cycles per minute prior to Environmental Tests.	10 milliohms MAXIMUM (change from initial)		
Vibration (Random)	Mate connectors and vibrate per EIA 364-28, test condition VII.	10 milliohms MAXIMUM (change from initial) & Discontinuity < 1 microsecond		
Shock (Mechanical)	Mate connectors and shock at 50 g's with ½ sine wave (11 milliseconds) shocks in the ±X,±Y,±Z axes (18 shocks total).	10 milliohms MAXIMUM (change from initial) & Discontinuity < 1 microsecond		
Wire Pullout Force (Axial)	Apply an axial pullout force on the wire at a rate of 25 ± 6 mm (1 ± ¼ inch) per minute. (For maximum performance use Molex application tooling with stranded tinned copper wire)	22 awg = 44 N (10 lbf) 24 awg = 35 N (8 lbf) 26 awg = 26 N (6 lbf) 28 awg = 17 N (4 lbf) 30 awg = 13 N (3 lbf)		
Normal Force	Apply a perpendicular force.	2.94 N (300 grams) average		
Kinked PC Pin Insertion Force (into PCB Hole)	Apply an axial insertion force on pins at a rate of 25 ± 6 mm (1 ± ¼ inch) per minute.	Number of kinked pins	Maximum Insertion force (per pin)	Average Insertion force (per pin)
		2	44.0 N (9.9 lbf)	15.1N (3.4 lbf)
		4	21.4 N (4.8 lbf)	9.8 N (2.2 lbf)
		6	18.2 N (4.1 lbf)	4.9 N (1.1 lbf)

REVISION: <b>P3</b>	EGR/ECN INFORMATION: EC No: <b>UCP2008-0956</b> DATE: <b>11/6/2007</b>	TITLE: <b>PRODUCT SPECIFICATION .100 CENTER KK CONNECTORS</b>	SHEET No. <b>3 of 5</b>
------------------------	--	--	----------------------------

DOCUMENT NUMBER: <b>PS-10-07</b>	CREATED / REVISED BY: <b>ADERR</b>	CHECKED BY: <b>JBELL</b>	APPROVED BY: <b>FSMITH</b>
-------------------------------------	---------------------------------------	-----------------------------	-------------------------------



# PRODUCT SPECIFICATION

## 5.3 ENVIRONMENTAL REQUIREMENTS

DESCRIPTION	TEST CONDITION	REQUIREMENT										
Shock (Thermal)	Mate connectors; expose to 5 cycles of: <table border="1"> <thead> <tr> <th>Temperature °C</th> <th>Duration (Minutes)</th> </tr> </thead> <tbody> <tr> <td>-40 +0/-3</td> <td>30</td> </tr> <tr> <td>+25 ±10</td> <td>5 MAXIMUM</td> </tr> <tr> <td>+105 +3/-0</td> <td>30</td> </tr> <tr> <td>+25 ±10</td> <td>5 MAXIMUM</td> </tr> </tbody> </table>	Temperature °C	Duration (Minutes)	-40 +0/-3	30	+25 ±10	5 MAXIMUM	+105 +3/-0	30	+25 ±10	5 MAXIMUM	10 milliohms MAXIMUM (change from initial) & Visual: No Damage
Temperature °C	Duration (Minutes)											
-40 +0/-3	30											
+25 ±10	5 MAXIMUM											
+105 +3/-0	30											
+25 ±10	5 MAXIMUM											
Thermal Aging	Mate connectors; expose to: 96 hours at 105 ± 2°C	10 milliohms MAXIMUM (change from initial)] & Visual: No Damage										
Humidity (Steady State)	Mate connectors: expose to a temperature of 40 ± 2°C with a relative humidity of 90-95% for 96 hours.  Note: Remove surface moisture and air dry for 1 hour prior to measurements.	10 milliohms MAXIMUM (change from initial) & Dielectric Withstanding Voltage: No Breakdown at 500 VAC & Insulation Resistance: 1000 Megohms MINIMUM & Visual: No Damage										
Humidity (Cyclic)	Mate connectors: cycle per EIA-364-31: 24 cycles at temperature 25 ± 3°C at 80 ± 5% relative humidity and 65 ± 3°C at 50 ± 5% relative humidity; dwell time of 1.0 hour; ramp time of 0.5 hours.  {Note: Remove surface moisture and air dry for 1 hour prior to measurements.}	10 milliohms MAXIMUM (change from initial) & Dielectric Withstanding Voltage: No Breakdown at 500 VAC & Insulation Resistance: 1000 Megohms MINIMUM & Visual: No Damage										
Solderability	Per SMES-152	Solder coverage: 95% MINIMUM (per SMES-152)										

REVISION: <b>P3</b>	EGR/ECN INFORMATION: EC No: <b>UCP2008-0956</b> DATE: <b>11/6/2007</b>	TITLE: <b>PRODUCT SPECIFICATION .100 CENTER KK CONNECTORS</b>	SHEET No. <b>4 of 5</b>
DOCUMENT NUMBER: <b>PS-10-07</b>	CREATED / REVISED BY: <b>ADERR</b>	CHECKED BY: <b>JBELL</b>	APPROVED BY: <b>FSMITH</b>



# PRODUCT SPECIFICATION

## 5.3 ENVIRONMENTAL REQUIREMENTS

DESCRIPTION	TEST CONDITION	REQUIREMENT
Solder Resistance	Dip connector terminal tails in solder: Solder Duration: 5 ± 0.5 seconds; Solder Temperature: 230 ± 5°C	Visual: No Damage to insulator material
Cold Resistance	Mate connectors: Duration: 96 hours; Temperature: -40 ± 3°C	10 milliohms MAXIMUM (change from initial) & Visual: No Damage
Corrosive Atmosphere: Flowing Mixed Gas (FMG)	Test per EIA-364-65, Class II, Exposure to gasses for 4 days, unmated.	10 milliohms MAXIMUM (change from initial) & Visual: No Damage

## 6.0 PACKAGING

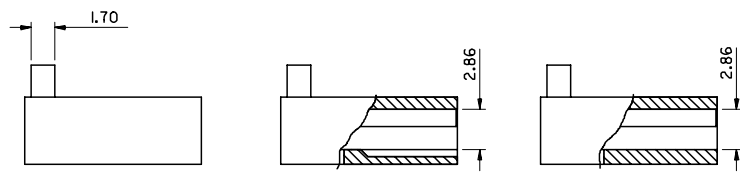
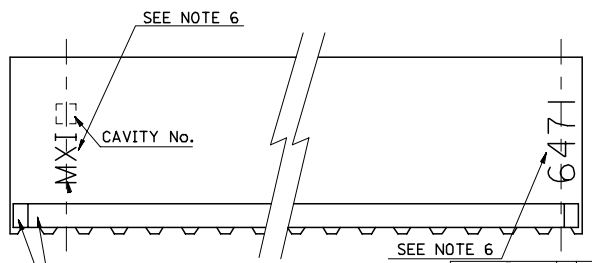
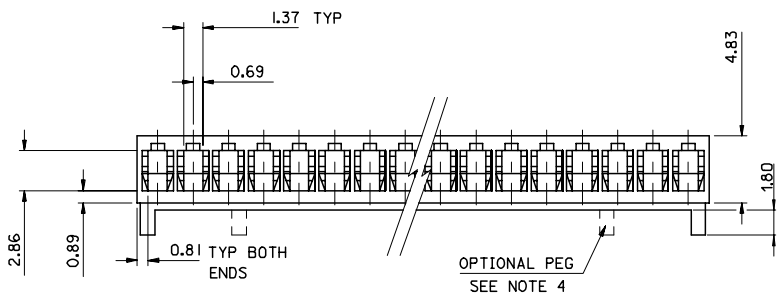
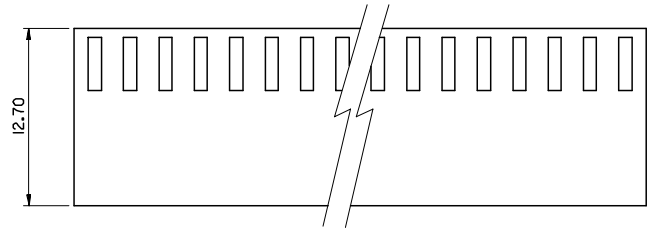
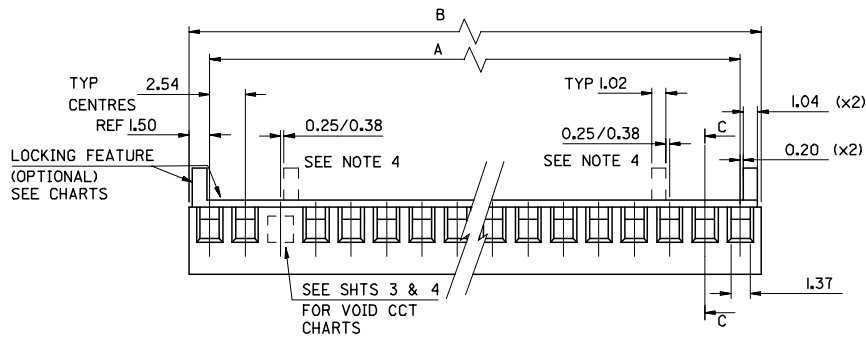
Parts shall be packaged to protect against damage during handling, transit and storage.

## 7.0 GAGES AND FIXTURES

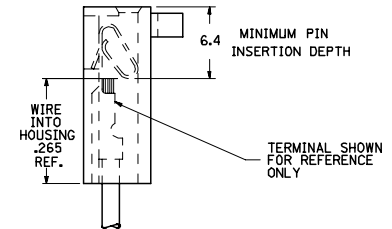
## 8.0 OTHER

REVISION: <b>P3</b>	EGR/ECN INFORMATION: EC No: <b>UCP2008-0956</b> DATE: <b>11/6/2007</b>	TITLE: <b>PRODUCT SPECIFICATION .100 CENTER KK CONNECTORS</b>	SHEET No. <b>5 of 5</b>
DOCUMENT NUMBER: <b>PS-10-07</b>	CREATED / REVISED BY: <b>ADERR</b>	CHECKED BY: <b>JBELL</b>	APPROVED BY: <b>FSMITH</b>

28	68.58±0.25	71.58±0.25
27	66.04±0.25	69.04±0.25
26	63.50±0.25	66.50±0.25
25	60.96±0.25	63.96±0.25
24	58.42±0.25	61.42±0.25
23	55.88±0.25	58.88±0.25
22	53.34±0.25	56.34±0.25
21	50.80±0.25	53.80±0.25
20	48.26±0.25	51.26±0.25
19	45.72±0.20	48.72±0.20
18	43.18±0.18	46.18±0.18
17	40.64±0.15	43.64±0.15
16	38.10±0.15	41.10±0.15
15	35.56±0.13	38.56±0.13
14	33.02±0.13	36.02±0.13
13	30.48±0.13	33.48±0.13
12	27.94±0.13	30.94±0.13
11	25.40±0.10	28.40±0.10
10	22.86±0.10	25.86±0.10
9	20.32±0.08	23.32±0.08
8	17.78±0.08	20.78±0.08
7	15.24±0.08	18.24±0.08
6	12.70±0.05	15.70±0.05
5	10.16±0.05	13.16±0.05
4	7.62±0.05	10.62±0.05
3	5.08±0.05	8.08±0.05
2	2.54±0.05	5.54±0.05
No. OF CCTS	DIM. A	DIM. B



C-C PARTIAL SECTION



- NOTES:
1. MATERIAL: POLYAMIDE (PA66/6), UL94 V-0  
COLOR: NATURAL PER THE FOLLOWING 89992-0086
  2. FOR USE WITH ANTI-FISH HOOKING TERMINAL No. 4809--.
  3. SEE SHT. 3 FOR PARTS WITH VOIDS.
  4. OPTIONAL CENTRE PEGS TO BE USED ON 7cct & LARGER SIZES ONLY. SEE SHT. 3 FOR CHARTED ENG. No.'S.
  5. PART No. PRECEDED BY CODE LETTER DESIGNATES MFG. LOC'N. I=IRELAND

E-6471-N-\*\*\*  
 No. OF CCTS  
 BLANK = STD. VOID  
 B = OPT. STYLE VOID  
 VOID CCT LOC'N.  
 BLANK NO LOCKING RAMP  
 I = LOCKING RAMP & POL. RIB  
 S = OPT. PEG  
 R = LOCKING RAMP ONLY

6. 'MX\*' MARK AND PART I.D. '6471' APPEAR EITHER ON FRONT OR BACK SIDE. SEE END VIEW FOR SIDE SIDE ORIENTATION.

CORRECT DIMENSION	2007/02/05
EC No: E2007-0665	2007/02/05
DRW: OBYRNES	2007/02/05
CHKD: OBYRNES	2007/02/05
APPR: OBYRNES	2007/02/12
REV	DESCRIPTION

QUALITY SYMBOLS		
▽=0		
▽=0		
GENERAL TOLERANCES (UNLESS SPECIFIED)		
	mm	
4 PLACES ±	---	
3 PLACES ±	---	
2 PLACES ±	0.15	
1 PLACE ±	0.25	
ANGULAR ±		°

DIMENSION STYLE	
MM ONLY	
DRAWN BY	DATE
SF	2000/07/14
CHECKED BY	DATE
DWASZKIEWICZ	2006/02/27
APPROVED BY	DATE
JDENNEY	2006/02/27
MATERIAL NO.	DOCUMENT NO.
	SD-6471-N*-**

SCALE	DESIGN UNITS	THIRD ANGLE PROJECTION
4:1	METRIC	
2.54 MM KK CRP TRM HSG IL		
MOLEX INCORPORATED		
SHEET NO.		1 OF 5

DRAFT WHERE APPLICABLE MUST REMAIN WITHIN DIMENSIONS

SEE CHART

THIS DRAWING CONTAINS INFORMATION THAT IS PROPRIETARY TO MOLEX INCORPORATED AND SHOULD NOT BE USED WITHOUT WRITTEN PERMISSION

PART NO. SEE CHART  
 DWG. NO. SD-6471-N-...

PART No.	ENG No.	No. OF CIRCUITS	RAMP & POL. RIBS	DIM. A	DIM. B
22-01-2025	E-6471-021	2	YES	↑	↑
↑ -2035	↑ -031	3	↑		
-2045	-041	4			
-2055	-051	5			
-2065	-061	6			
-2075	-071	7			
-2085	-081	8			
-2095	-091	9			
-2105	-101	10			
-2115	-111	11			
-2125	-121	12			
-2135	-131	13			
-2145	-141	14			
-2155	-151	15			
-2165	-161	16			
-2175	-171	17			
-2185	-181	18			
-2195	-191	19			
-2205	-201	20			
-2215	-211	21			
-2225	-221	22			
↓ -2235	-231	23			
22-01-2245	-241	24			
NOT TOOLED	-251	25			
22-01-2265	-261	26			
NOT TOOLED	↓ -271	27			
22-01-2285	E-6471-281	28	YES	↓	↓

SEE SHEET I FOR DIMENSION  
 SEE SHEET I FOR DIMENSION

PART No.	ENG No.	No. OF CIRCUITS	LOCKING FEATURE	DIM. A	DIM. B
22-01-2026	E-6471-2	2	NO	↑	↑
↑ -2036	↑ -3	3	↑		
-2046	-4	4			
-2056	-5	5			
-2066	-6	6			
-2076	-7	7			
-2086	-8	8			
-2096	-9	9			
-2106	-10	10			
-2116	-11	11			
-2126	-12	12			
-2136	-13	13			
-2146	-14	14			
-2156	-15	15			
-2166	-16	16			
-2176	-17	17			
-2186	-18	18			
-2196	-19	19			
-2206	-20	20			
↓ -2216	-21	21			
22-01-2226	-22	22			
NOT TOOLED	-23	23			
22-01-2246	-24	24			
NOT TOOLED	-25	25			
22-01-2266	-26	26			
22-01-2276	↓ -27	27			
22-01-2286	E-6471-28	28	NO	↓	↓

SEE SHEET I FOR DIMENSION  
 SEE SHEET I FOR DIMENSION

A SEE SHEET I.

**REVISIONS**

DIMENSIONS SHOWN ( METRIC ) INCH  
 UNLESS OTHERWISE SPECIFIED  
 TOLERANCES: ANGULAR ± 1/2°

3 PLACE ± .	
2 PLACE ± .	±
1 PLACE ± .	±

DRAFT WHERE APPLICABLE MUST REMAIN WITHIN DIMENSIONS

DESIGN DIMENSION  (MM)  IN.  
 (PRIMARY)

EQUIVALENT DIMENSION  (MM)  IN.  
 (SECONDARY)

DRWG BY: SF  
 CHK'D BY:  
 APP'D BY:  
 SCALE: -

**REVISE ONLY ON CAD SYSTEM** SHL REV.

CAD/CAM FILENAME: SD-6471-N-.502  
 THIS DRAWING CONTAINS INFORMATION THAT IS PROPRIETARY TO MOLEX INC. & SHOULD NOT BE USED WITHOUT WRITTEN PERMISSION

TITLE: 2.54 mm KK Crp Trm Hsg II

**MOLEX EUROPE** SHEET NO. DATE: 20F 15/07/00

PART NO. SEE CHART DWG NO. SD-6471-N-... SIZE B

PART NO. SEE CHART  
 DWG. NO. SD-6471-N-...

PART No.	ENG No.	No. OF CIRCUITS	RAMP & POL. RIBS	VOID CCT LOCATION	DIM. A	DIM. B
22-01-4022	E-6471-021-02	2	YES	2	↑	↑
↑ -4032	↑ -031-02	3	↑	↑	↑	↑
-4042	-041-02	4				
-4052	-051-02	5				
-4062	-061-02	6				
-4072	-071-02	7				
-4082	-081-02	8				
-4092	-091-02	9				
-4102	-101-02	10				
-4112	-111-02	11				
-4122	-121-02	12				
-4132	-131-02	13				
-4142	-141-02	14				
-4152	-151-02	15				
-4162	-161-02	16				
-4172	-171-02	17				
-4182	-181-02	18				
-4192	-191-02	19				
-4202	-201-02	20				
-4212	-211-02	21				
-4222	-221-02	22				
-4232	-231-02	23				
-4242	-241-02	24				
-4252	-251-02	25				
-4262	-261-02	26				
-4272	-271-02	27				
22-01-4282	E-6471-281-02	28	YES	2	↓	↓

PART No.	ENG No.	No. OF CIRCUITS	LOCKING FEATURE	VOID CCT LOCATION	DIM. A	DIM. B
22-01-4021	E-6471-02-02	2	NO	2	↑	↑
↑ -4031	↑ -03-02	3	↑	↑	↑	↑
-4041	-04-02	4				
-4051	-05-02	5				
-4061	-06-02	6				
-4071	-07-02	7				
-4081	-08-02	8				
-4091	-09-02	9				
-4101	-10-02	10				
-4111	-11-02	11				
-4121	-12-02	12				
-4131	-13-02	13				
-4141	-14-02	14				
-4151	-15-02	15				
-4161	-16-02	16				
-4171	-17-02	17				
-4181	-18-02	18				
-4191	-19-02	19				
-4201	-20-02	20				
-4211	-21-02	21				
-4221	-22-02	22				
-4231	-23-02	23				
-4241	-24-02	24				
-4251	-25-02	25				
-4261	-26-02	26				
↓ -4271	↓ -27-02	27				
22-01-4281	E-6471-28-02	28	NO	2	↓	↓

SEE SHEET 1.	LTR	REVISIONS	DIMENSIONS SHOWN ( METRIC ) INCH UNLESS OTHERWISE SPECIFIED TOLERANCES: ANGULAR ± 1/2°	DRWG BY <b>SF</b>	REVISE ONLY ON CAD SYSTEM		SHL	REV.
			INCH ( METRIC )	CHK'D BY	CAD/CAM FILENAME SD-6471-N - .503			
			3 PLACE ± .	APP'D BY	THIS DRAWING CONTAINS INFORMATION THAT IS PROPRIETARY TO MOLEX INC. & SHOULD NOT BE USED WITHOUT WRITTEN PERMISSION			
			2 PLACE ± .	SCALE	TITLE 2.54 mm KK Crp Trm Hsg II			
1 PLACE ±				MOLEX EUROPE		SHEET NO.	DATE	
DRAFT WHERE APPLICABLE MUST REMAIN WITHIN DIMENSIONS					30F	13/07/00		
DESIGN DIMENSION <input type="checkbox"/> (MM)					PART NO.		DWG NO.	SIZE
(PRIMARY) <input type="checkbox"/> IN.					SEE CHART		SD-6471-N-...	B
EQUIVALENT DIMENSION <input type="checkbox"/> (MM)								
(SECONDARY) <input type="checkbox"/> IN.								

PART NO. SEE CHART  
 DWG. NO. SD-6471-N

HOUSING WITH OPTIONAL PEGS

PART No.	ENG No.	No. OF CIRCUITS	RAMP & POL. RIBS	DIM. A	DIM. B
NOT TOOLED	E-6471-7S	7	YES	↑	↑
↑	↑ -8S	8	↑	↑ SEE SHEET I FOR DIMENSION	↑ SEE SHEET I FOR DIMENSION
	-9S	9			
	-10S	10			
	-11S	11			
	-12S	12			
	-13S	13			
	-14S	14			
	-15S	15			
	-16S	16			
	-17S	17			
	-18S	18			
	-19S	19			
	-20S	20			
	-21S	21			
	-22S	22			
	-23S	23			
	-24S	24			
	-25S	25			
	-26S	26			
	↓ -27S	27	↓		
NOT TOOLED	E-6471-28S	28	YES	↓	↓

PART No.	ENG No.	No. OF CIRCUITS	RAMP & POL. RIBS	VOID CCT LOCATION	DIM. A	DIM. B		
22-01-4123	E-6471-12-11	12	NO	11	↑	↑		
22-01-4124	↑ -121-11	12	YES	11	↑ SEE SHEET I FOR DIMENSION	↑ SEE SHEET I FOR DIMENSION		
NOT TOOLED	-24-01	24	NO	1				
NOT TOOLED	-241-01	24	YES	1				
22-01-6132	-13-51	13	NO	2 & 5				
NOT TOOLED	-131-51	13	YES	2 & 5				
22-01-6134	-13-52	13	NO	9 & 12				
22-01-6135	-131-52	13	YES	9 & 12				
NOT TOOLED	-7-3	7	NO	3				
97-00-0739	-71-3	7	YES	3				
97-00-0061	-15-51	15	NO	2 & 8				
NOT TOOLED	-151-51	15	YES	2 & 8				
97-00-0189	-5-4	5	NO	4				
97-00-0620	-51-4	5	YES	4				
97-00-0619	↓ -51-3	5	YES	3				
97-00-0740	E-6471-61-3	6	YES	3			↓	↓

A SEE SHEET I.	LTR	REVISIONS	DIMENSIONS SHOWN ( METRIC ) INCH UNLESS OTHERWISE SPECIFIED TOLERANCES: ANGULAR ± 1/2°	DRWG BY <b>SF</b>	REVISE ONLY ON CAD SYSTEM		SH. REV.	
			INCH ( METRIC )	CHK'D BY	CAD/CAM FILENAME SD-6471-N - .504			THIS DRAWING CONTAINS INFORMATION THAT IS PROPRIETARY TO MOLEX INC. & SHOULD NOT BE USED WITHOUT WRITTEN PERMISSION
			3 PLACE ± . 2 PLACE ± . 1 PLACE ±	APP'D BY	TITLE <b>2.54 mm KK Crp Trm Hsg II</b>			
			DRAFT WHERE APPLICABLE MUST REMAIN WITHIN DIMENSIONS	SCALE	MOLLEX MOLEX EUROPE		SHEET NO. DATE <b>40F 17/07/00</b>	
			DESIGN DIMENSION <input type="checkbox"/> (MM) (PRIMARY) <input type="checkbox"/> IN.		PART NO. SEE CHART		DWG NO. SD-6471-N-•••	SIZE B
			EQUIVALENT DIMENSION <input type="checkbox"/> (MM) (SECONDARY) <input type="checkbox"/> IN.					

OPTIONAL STYLE VOID (SECTION E-E)

PART No.	ENG No.	No. OF CIRCUITS	VOID CCT LOCATION	RAMP & POL. RIBS	DIM. A	DIM. B
22-01-602I	E-6471-02-02B	2	2	NO	↑	↑
NOT TOOLED	↑ -02I-02B	2	↑	YES	↑ DIM	↑ DIM
22-01-607I	-07-02B	7		NO		
NOT TOOLED	↑ -07I-02B	7		YES		
22-01-610I	-10-02B	10		NO		
NOT TOOLED	↑ -10I-02B	10		YES		
22-01-611I	↓ -11-02B	11	↓	NO	↓ SEE SHT. I FOR	↓ SEE SHT. I FOR
NOT TOOLED	E-6471-11I-02B	11	2	YES	↓	↓

PART No.	ENG No.	No. OF CIRCUITS	RAMP ONLY	DIM. A	DIM. B
97-00-1062	E-6471-2R	2	YES	↑	↑
↑ -1063	↑ -3R	3	↑		
-1064	-4R	4			
-1065	-5R	5			
-1066	-6R	6			
-1067	-7R	7			
-1068	-8R	8			
-1069	-9R	9			
-1070	-10R	10			
-1071	-11R	11			
-1072	-12R	12			
-1073	-13R	13			
-1074	-14R	14			
-1075	-15R	15			
↓ -1076	-16R	16			
97-00-1077	-17R	17			
NOT TOOLED	-18R	18			
↑	-19R	19			
	-20R	20			
	-21R	21			
	-22R	22			
	-23R	23			
	-24R	24			
	-25R	25			
	-26R	26			
	↓ -27R	27			
NOT TOOLED	E-6471-28R	28	YES	↓	↓

PART NO. SEE CHART  
 DRG. NO. SD-6471-N-...

SEE SHEET I.

LTR	REVISIONS	DIMENSIONS SHOWN ( METRIC ) INCH UNLESS OTHERWISE SPECIFIED TOLERANCES: ANGULAR ± 1/2°	DRWG BY <b>SF</b>
		INCH ( METRIC )	CHK'D BY
		3 PLACE ± .	APP'D BY
		2 PLACE ± .	SCALE
	1 PLACE ±	DRAFT WHERE APPLICABLE MUST REMAIN WITHIN DIMENSIONS	
		DESIGN DIMENSION <input type="checkbox"/> (MM) (PRIMARY) <input type="checkbox"/> IN.	
		EQUIVALENT DIMENSION <input type="checkbox"/> (MM) (SECONDARY) <input type="checkbox"/> IN.	

REVISE ONLY ON CAD SYSTEM		SHL. REV.
CAD/CAM FILENAME SD-6471-N - .505	THIS DRAWING CONTAINS INFORMATION THAT IS PROPRIETARY TO MOLEX INC. & SHOULD NOT BE USED WITHOUT WRITTEN PERMISSION	
TITLE <b>2.54 mm KK Cpr Trm Hsg II</b>		
<b>MOLEX EUROPE</b>		SHEET NO. DATE <b>50F 17/07/00</b>
PART NO. <b>SEE CHART</b>	DWG NO. <b>SD-6471-N-...</b>	SIZE <b>B</b>

E

D

MM DIMENSIONS IN METRIC DO NOT SCALE DRAWING

B

A

22-01 -2285	E-6471-281	28	○	↑	↑
設備無し NOT TOOLED	↑ -271	27	↑		
22-01 -2265	-261	26			
設備無し NOT TOOLED	-251	25			
22-01 -2245	-241	24			
↑ -2235	-231	23			
-2225	-221	22			
-2215	-211	21			
-2205	-201	20		図面 1 OF 2 参照	参照
-2195	-191	19		SEE SHEET 1 OF 2	参照
-2185	-181	18			
-2175	-171	17		図面 1 OF 2 参照	参照
-2165	-161	16			
-2155	-151	15		SEE SHEET 1 OF 2	
-2145	-141	14			
-2135	-131	13		図面 1 OF 2 参照	参照
-2125	-121	12			
-2115	-111	11			
-2105	-101	10			
-2095	-091	9			
-2085	-081	8			
-2075	-071	7			
-2065	-061	6			
-2055	-051	5			
-2045	-041	4			
↓ -2035	↓ -031	3	○	↓	↓
22-01 -2025	E-6471-021	2	○		
PART NO.	ENG. NO.	種数 NO. OF CKTS.	補強部 RAMP & POL.RIBS	A	B

注記  
NOTES

- 適合ターミナル 4809-\* (22-30 GA)  
クリンプ部 被覆外径  $\phi 1.58\text{mm}$ 以下  
FOR USE TERMINAL 4809-\* (22-30 GA)  
CRIMP TYPE ,MAX. INSULATION  $\phi 1.58\text{mm}$
- ハウジングの端と端を合わせて積み重ねることができる。  
TWO(2) HOUSINGS MAY BE STACKED END TO END.
- ( ) 内寸法は参考寸法  
( ) DIMENSION IS FOR REFERENCE.
- 本製品は仕様書NO. 10-07に基づく。  
THIS PART CONFORMS TO MOLEX PRODUCT SPEC. NO.10-07
- △トレードマーク：MOLEX プラス1文字の製造国を示すアルファベットにて構成。  
(例：I =アイルランド)  
TRADE MARK FORMED BY MOLEX AND I MORE LETTER OF ALPHABET WHICH MEAN THE MANUFACTURING COUNTRY. (c.g. I=IRELAND)
- 19から28極は標準品ではありません。  
19-28 CIRCUITS ARE NON-STANDARD.
- 一般公差： $\pm 0.4$   
GENERAL TOLERANCES:  $\pm 0.4$

角度 ANGLE		材料 MATERIAL	
30 以上 OVER	+0.3	ナイロン6/6, UL94V-0	
10 以上 OVER 30 未満 UNDER	+0.25	NYLON6/6, UL94V-0	
10 未満 UNDER	+0.2	仕上げ FINISH	
一般公差 GENERAL TOLERANCES		適用電線範囲 WIRE RANGE	
		被覆外径 INS. RANGE	
		DRAWN BY '97/09/18 Y.KANNO	
		CHK'D BY '97/09/19 Y.MIZUNO	
		APP'D BY '97/09/19 M.FUKUSHIMA	
		尺度 SCALE	
		新規作成 RELEASED (JC80224) Y.K. '97/09/18	
		変更内容 DR. '97/09/18	
		日付 CHK. DATE	
		MATERIAL MOLEX-JAPAN CO.,LTD. 日本モレックス株式会社	
		REVISE ONLY ON CAD SYSTEM	
		TITLE 名称 HOUSING ,KK (2.54)/.100 CRIMP TYPE ,ANTI FISH-HOOKING TERMINAL WITH LOCKING RAMP	
		DWG. NO. SHEET 2 OF 2 REV V	
		SDE-6471-N*-*	