

© 1969 BY AMP INCORPORATED. ALL RIGHTS RESERVED. AMP
PRODUCTS COVERED BY PATENTS AND/OR PATENTS PENDING.

| PART NO. | NO. OF POS. | A | B | C | D |
|------------|-------------|------|-------|------|-------|
| 583486-1 | 50 | .156 | 7.644 | .156 | 7.956 |
| -2 | 49 | | 7.488 | | 7.800 |
| -3 | 48 | | 7.332 | | 7.644 |
| -4 | 47 | | 7.176 | | 7.488 |
| -5 | 46 | | 7.020 | | 7.332 |
| -6 | 45 | | 6.864 | | 7.176 |
| -7 | 44 | | 6.708 | | 7.020 |
| -8 | 43 | | 6.552 | | 6.864 |
| -9 | 42 | | 6.396 | | 6.708 |
| 1-583486-0 | 41 | | 6.240 | | 6.552 |
| 1-1 | 40 | | 6.084 | | 6.396 |
| 1-2 | 39 | | 5.928 | | 6.240 |
| 1-3 | 38 | | 5.772 | | 6.084 |
| 1-4 | 37 | | 5.616 | | 5.928 |
| 1-5 | 36 | | 5.460 | | 5.772 |
| 1-6 | 35 | | 5.304 | | 5.616 |
| 1-7 | 34 | | 5.148 | | 5.460 |
| 1-8 | 33 | | 4.992 | | 5.304 |
| 1-9 | 32 | | 4.836 | | 5.148 |
| 2-583486-0 | 31 | | 4.680 | | 4.992 |
| 2-1 | 30 | | 4.524 | | 4.836 |
| 2-2 | 29 | | 4.368 | | 4.680 |
| 2-3 | 28 | | 4.212 | | 4.524 |
| 2-4 | 27 | | 4.056 | | 4.368 |
| 2-5 | 26 | | 3.900 | | 4.212 |
| 2-6 | 25 | | 3.744 | | 4.056 |
| 2-7 | 24 | | 3.588 | | 3.900 |
| 2-8 | 23 | | 3.432 | | 3.744 |
| 2-9 | 22 | | 3.276 | | 3.588 |
| 3-583486-0 | 21 | | 3.120 | | 3.432 |
| 3-1 | 20 | | 2.964 | | 3.276 |
| 3-2 | 19 | | 2.808 | | 3.120 |
| 3-3 | 18 | | 2.652 | | 2.964 |
| 3-4 | 17 | | 2.496 | | 2.808 |
| 3-5 | 16 | | 2.340 | | 2.652 |
| 3-6 | 15 | | 2.184 | | 2.496 |
| 3-7 | 14 | | 2.028 | | 2.340 |
| 3-8 | 13 | | 1.872 | | 2.184 |
| 3-9 | 12 | | 1.716 | | 2.028 |
| 4-583486-0 | 11 | | 1.560 | | 1.872 |
| 4-1 | 10 | | 1.404 | | 1.716 |
| 4-2 | 9 | | 1.248 | | 1.560 |
| 4-3 | 8 | | 1.092 | | 1.404 |
| 4-4 | 7 | | .936 | | 1.248 |
| 4-5 | 6 | | .780 | | 1.092 |
| 4-6 | 5 | | .624 | | .936 |
| 4-7 | 4 | | .468 | | .780 |
| 4-583486-0 | 3 | .156 | .312 | .156 | .624 |
| 4-583486-7 | 53 | .156 | 8.112 | .156 | 8.424 |
| 5-583486-0 | 56 | .156 | 8.580 | .156 | 8.892 |

OBSOLETE 5

OBSOLETE 5

OBSOLETE 5

OBSOLETE 5

SUPERSEDED BY 1-5583486-8 5

OBSOLETE 5

OBSOLETE

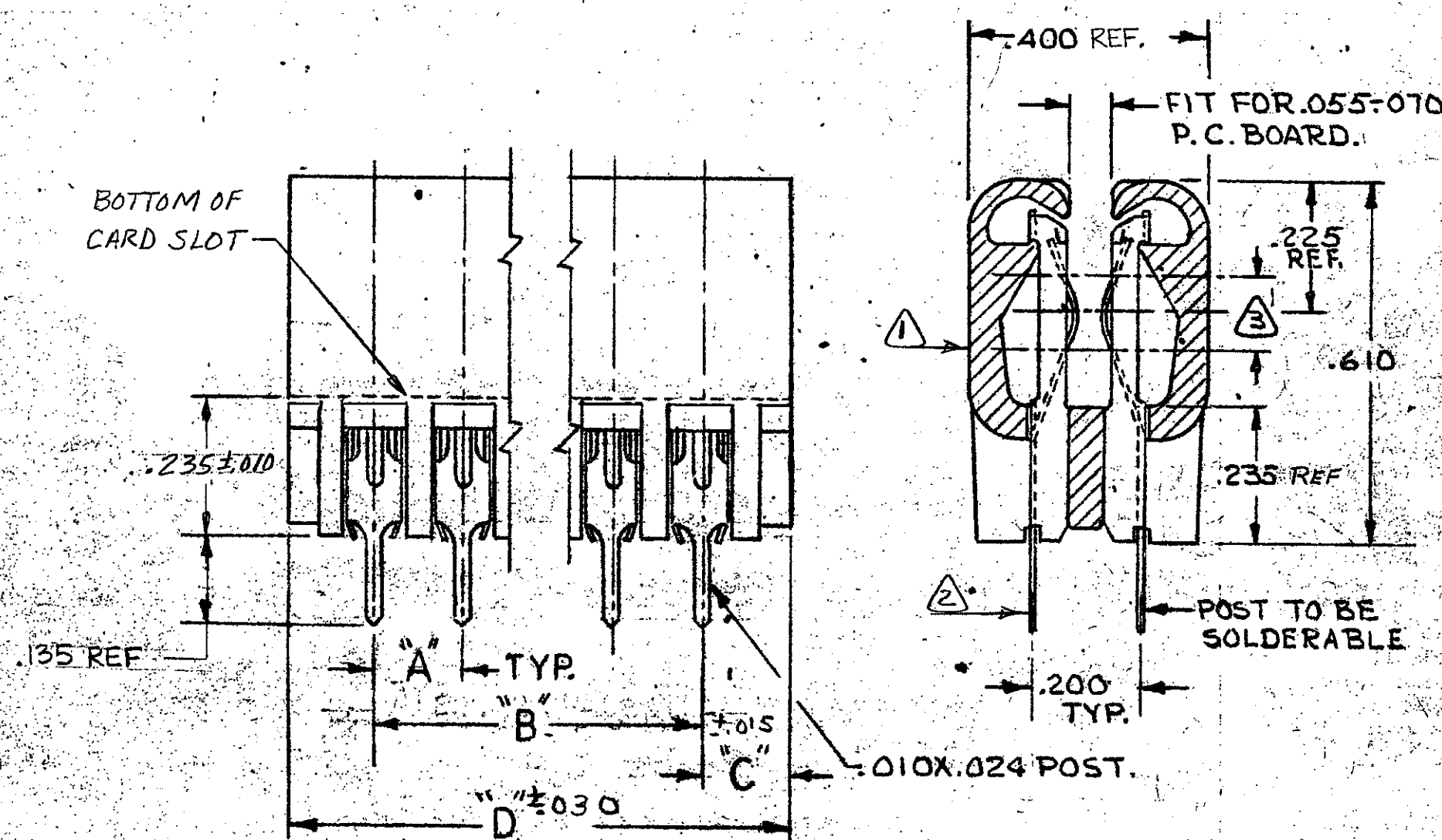
OBSOLETE 5

OBSOLETE 5

OBSOLETE 5

REVISIONS

| ZONE | LTR | DESCRIPTION | DATE | APPROVED |
|------|-----|--------------------------------|---------|----------|
| V | | REV PER AD5659 | 6-12-91 | RE DM |
| W | | REACTIVATE 1-5 PER 81-5MB-002 | 8-1-91 | RE DM |
| Y | | REACTIVATE 2-9 PER 91-5148-004 | 2-22-93 | RE DM |
| Z | | REV. 0010-0252-93 | 3-8-93 | RE DM |
| AA | | REV. PER 0010-0577-93 | 6-21-93 | RE DM |
| AB | | REV PER 0010-1602-95 | 1-96 | RE HWR |
| AC | | REV PER 0010-1604-95 | 1-97 | RE |
| AD | | REV PER EC 0320-209-97 | 7-7-97 | N5 |
| AD1 | | REVISED PER ECO-09-026444 | 27NOV09 | KK AEG |



△ FINISH: .000015 GOLD. SELECTIVE.

△ SEE SHEET 2 FOR RECOMMENDED PRINTED CIRCUIT BOARD LAYOUT.

△ OBSOLETE PARTS: OBSOLETE CIS STREAMLINING PER D.RENAUD/D.SINIS

UNLESS OTHERWISE SPECIFIED,
DIMENSIONS ARE IN INCHES
TOLERANCES ON:
DECIMALS ± .005 ANGLES ± .5

MATERIAL
△ HOUSING: GLASS
FILLED POLYESTER
COLOR: BLACK

△ CONTACT: PHOS.
BRONZE

CONTRACT NO.

DR

CHK

APPD

REL

DSGN APPD

OTHER APPD

AMP

AMP INCORPORATED
HARRISBURG, PENNSYLVANIA

NAME

HOUSING ASS'Y., TWIN LEAF, .156C,
SOLDER TYPE POST.

SIZE

C

CODE IDENT NO.

00779

NUMBER

583486

SCALE

X

SHEET 1 OF 2 SHTS.

CUSTOMER DRAWING

NUMBER
CUST 583486

A

B

C

D

1

2

3

4

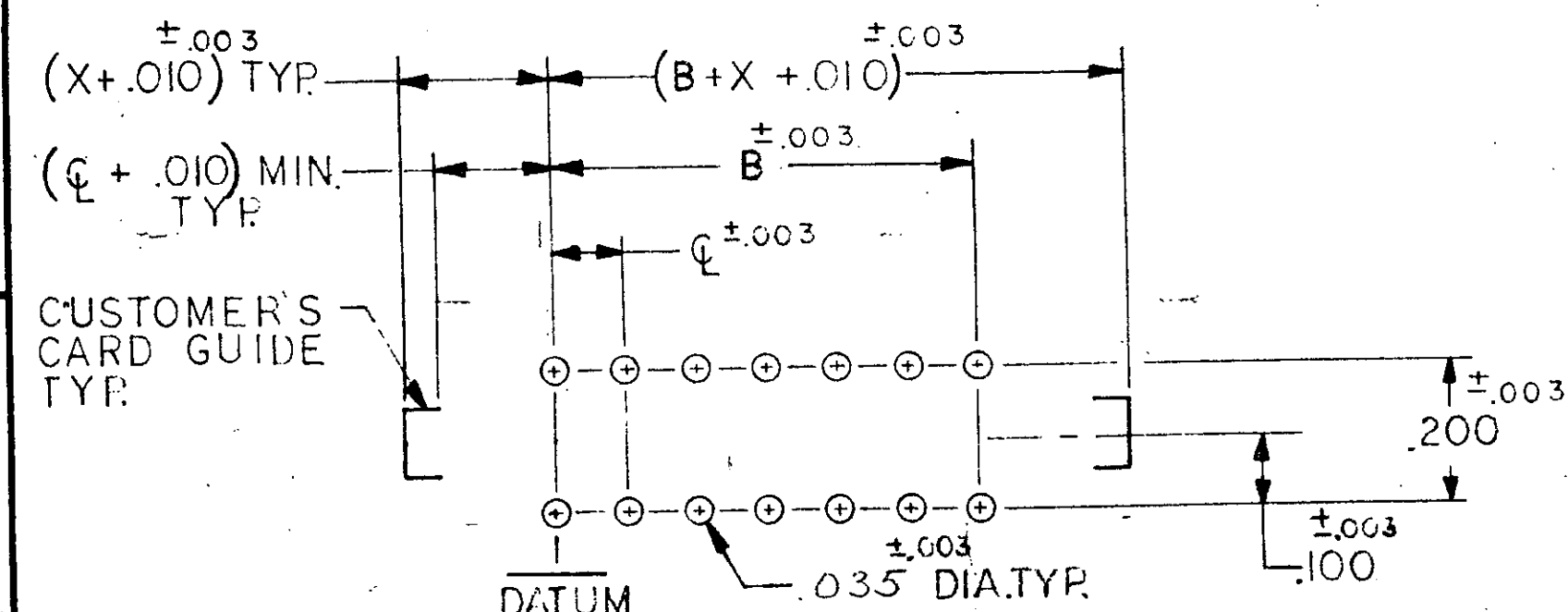
LOC

PRINT DIST

Unpublished copy not to be reproduced
without written permission of AMP Inc.



BOARD LAYOUT FOR USE WITH AMP CARL GUIDE PART NO. 583408
CR 583425

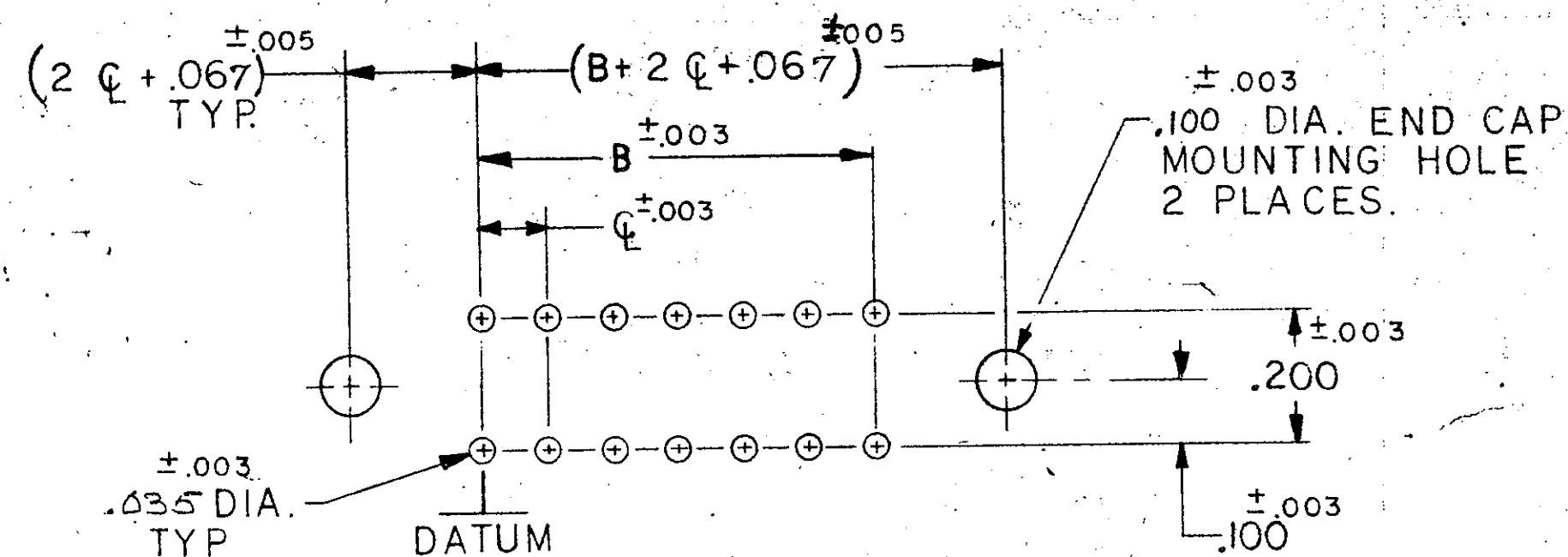


BOARD LAYOUT FOR USE WITH CUSTOMER SUPPLIED CARD GUIDE

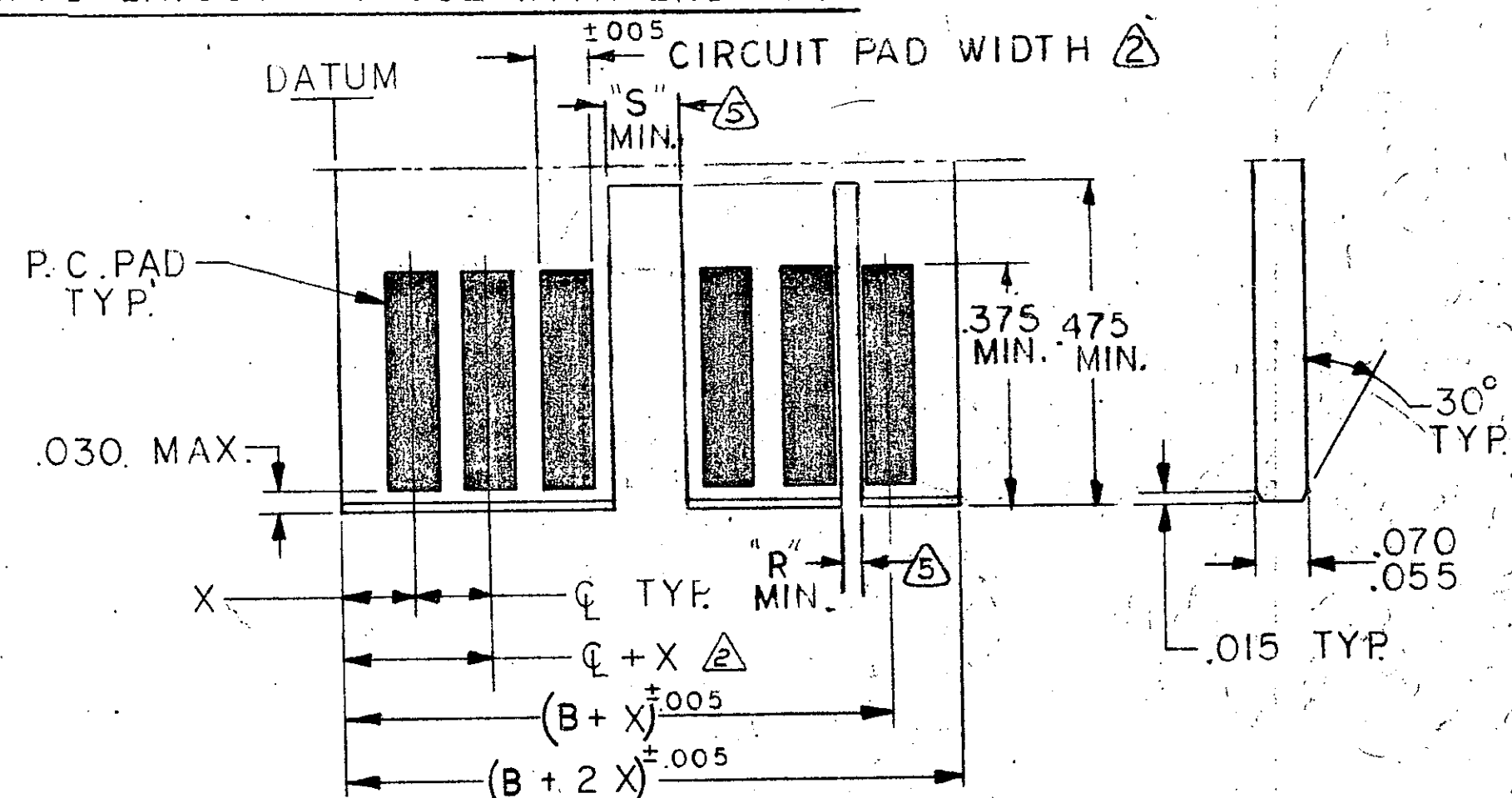
THE SLOT FOR INTER-CONTACT KEYING PLUGS MUST BE CENTERED BETWEEN THE PRINTED CIRCUIT PADS, WHILE THE SLOT FOR ON-CONTACT KEYING PLUGS MUST BE CENTERED ON THE AREA OF A PRINTED CIRCUIT PAD.

| INTER-CONTACT KEYING PLUG. | "R" | FOR CENTER LINE SPACING | ON CONTACT KEYING PLUG. | "S" | FOR CENTER LINE SPACING |
|-------------------------------|------|----------------------------|----------------------------|------|----------------------------|
| 530030-1 | .050 | .125-.150-.156 | 583714-1 | .129 | .100-.125 |
| 530030-2 | .040 | .100 | 583714-2 | .160 | .150-.156 |

| REVISIONS | | | | |
|-----------|-----|-------------|------|----------|
| ZONE | LTR | DESCRIPTION | DATE | APPROVED |
| | | SEE SHEET 1 | | |




BOARD LAYOUT FOR USE WITH END CAP



DAUGHTER BOARD LAYOUT

1. MAX. ALLOWABLE WARPAGE OF MOTHER BOARD NOT TO EXCEED .005/IN.
MAX. ALLOWABLE BOW OF DAUGHTER BOARD NOT TO EXCEED .010/IN.
THICKNESS OF MOTHER BOARD IS .062 FOR DOUBLE SLOTTED CARD
GUIDES AND .104 MAX. FOR ALL OTHER MOUNTING CONDITIONS.
- △. EACH PAD LOCATION INCREASES BY $\pm .005$ WITH A NON-CUMULATIVE
TOLERANCE OF $\pm .005$.
- CIRCUIT PAD WIDTH - .045 FOR .100 ϕ
.072 FOR .125 ϕ
.072 FOR .150 ϕ
.080 FOR .156 ϕ
- DIMENSIONS APPLY TO BOTH SIDES OF DAUGHTER BOARD.
3. ϕ INCREMENTS ON MOTHER BOARD HAVE $\pm .003$ NON-CUMULATIVE TOLERANCE.
4. "X" IS A CUSTOMER CONTROLLED DIMENSION EXCEPT FOR END CAP
ASSEMBLIES WHERE "X" = $\phi - .008$.

| | | | | |
|---|--|-------|---|--------------------|
| UNLESS OTHERWISE SPECIFIED, DIMENSIONS ARE IN INCHES TOLERANCES ON: DECIMALS ± ANGLES ± | CONTRACT NO. | |  AMP INCORPORATED HARRISBURG, PENNSYLVANIA | |
| | DR <i>Quimble 1-29-73</i> CHS <i>M. Ziegler 2-5-73</i> APPD <i>Larry M. Brown 2-14-73</i> REL <i>R. D. Trumps 3/13/73</i> | NAME | | |
| MATERIAL | DSGN APPD | SIZE | CODE IDENT NO. | NUMBER |
| | OTHER APPD | C | 00779 | 583486 |
| | | SCALE | <i>H</i> | SHEET 2 of 2 SHTS. |

CUSTOMER DRAWING

Mouser Electronics

Authorized Distributor

Click to View Pricing, Inventory, Delivery & Lifecycle Information:

[TE Connectivity:](#)

[2-583486-3](#)