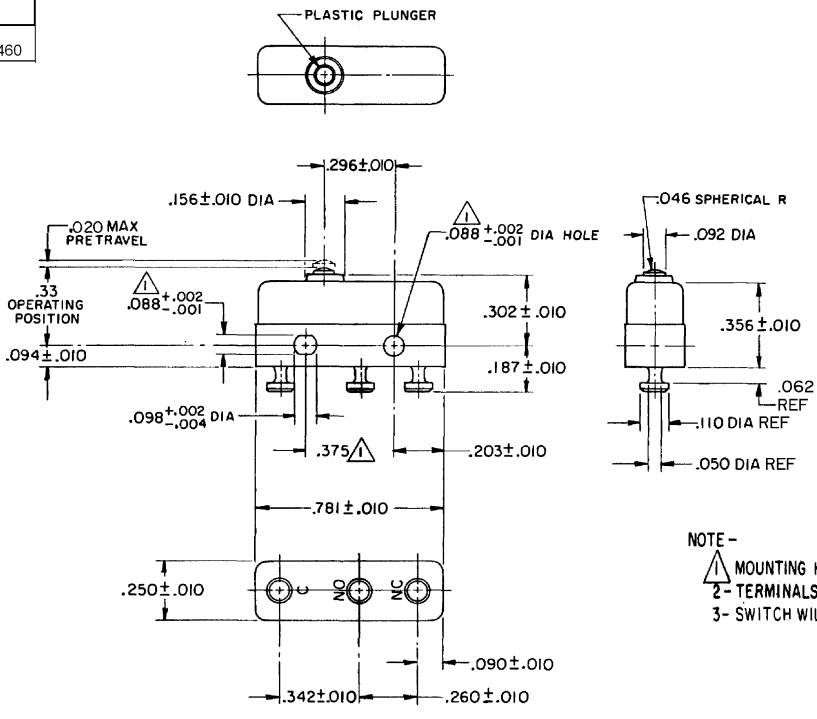


FO-55111-A  
 HONEYWELL  
 PART NUMBER  
 22SM25-T  
 PRODUCT CODE  
 TXP2460

REV	DOCUMENT	CHANGED BY	CHECK
4	0038111	PK 20MAY08	ASD



NOTE -  
 1- MOUNTING HOLES WILL ACCEPT PINS OR SCREWS OF .087 MAX DIA ON .375 ± .002 CENTERS  
 2- TERMINALS ARE PLATED FOR SOLDERING  
 3- SWITCH WILL WITHSTAND TEMPERATURE OF 250°F

RELEASE NO. PR - 6253  
 REPLACES -

CHARACTERISTICS	ELECTRICAL DATA	DESIGN UNITS: INCH TOLERANCES UNLESS NOTED:	DRAWN	VK	19 OCT 07	<b>Honeywell</b> TITLE SWITCH - BASIC
			CHECK	RJ	19 OCT 07	
OPERATING FORCE - - - - 3 - 5 OZ	CONTACT ARRANGEMENT S P D T	NO PLACE .X ±	THIS DRAWING COVERS A PROPRIETARY ITEM AND IS THE PROPERTY OF HONEYWELL. THIS DRAWING IS NOT TO BE COPIED OR USED WITHOUT THE PERMISSION OF HONEYWELL.			SIZE <b>B</b>
RELEASE FORCE - - - - 1 OZ MIN	30 VOLTS DC RATING	ONE PLACE .X ±	INTERPRET PER ANSI Y14.5M-1982 OTHER HONEYWELL ENGINEERING STANDARDS MAY APPLY			
DIFFERENTIAL TRAVEL - - .004 MAX	INDUCTIVE 3 AMP 2.5 AMP	TWO PLACE .XX ±	RASTER			DRAWING NAME
OVERTRAVEL - - - - .005 MIN	RESISTIVE 5 AMP 5 AMP	THREE PLACE .XXX ±				DRAWING NAME <b>22SM25-T</b>
	MAXIMUM INRUSH 24 AMP	FOUR PLACE .XXXX ±	SCALE	WEIGHT .006 LB MAX	SHEET 1 OF 1	REV <b>4</b>
APPROVALS	KEMA CE UL CSA SA, 250 VAC	ANGLES ±	THIRD ANGLE PROJECTION			