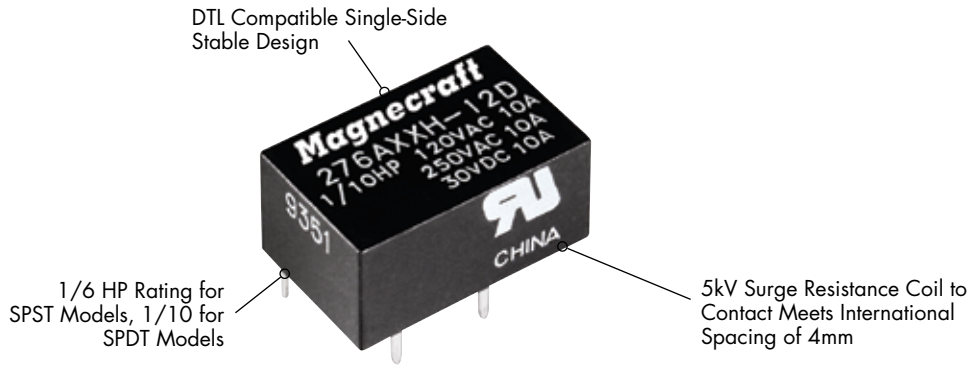


276 Low Profile PCB Mount Power Relay/SPST and SPDT 7 - 10 Amp Rated

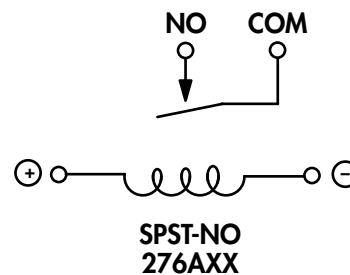
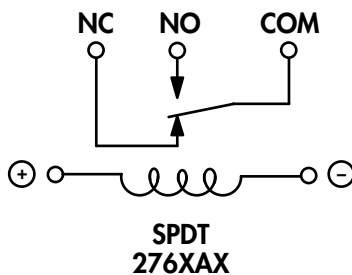


General Specifications

(UL 508)

			276XAX	276AXX
Contact Characteristics		Units	7 Amp	10 Amp
Number and type of Contacts			SPDT	SPST-NO
Contact materials			Silver Alloy	Silver Alloy
Current rating		A	7	10
Switching voltage		V	240 50/60 Hz	240 50/60 Hz
		V	30	30
		HP	1/10 @ 120VAC	1/6 @ 120VAC
Minimum Switching Requirement	Minimum	mA	100	100
Coil Characteristics				
Voltage Range		V	3...24	3...24
Operating Range		%	80% to 110%	80% to 110%
Average consumption	% of Nominal	W	0.2	0.2
Drop-out voltage threshold		%	10%	10%
Performance Characteristics				
Electrical Life	Operations @ Rated Current (Resistive)		100,000	100,000
Mechanical Life	Unpowered		5,000,000	5,000,000
Operating time (response time)		ms	10	10
Dielectric	Between coil and contact	V	2000	2000
	Between contacts	V	1000	1000
Environment				
Product certifications	Standard version		UL	UL
Ambient air temperature around the device	Storage	°C	-40...+85	-40...+85
	Operation	°C	-40...+55	-40...+55
Vibration resistance	Operational	g-n	3, 10-55 Hz	3, 10-55 Hz
Shock resistance		g-n	20	20
Weight		grams	5.5	5.5

WIRING DIAGRAMS TOP VIEW





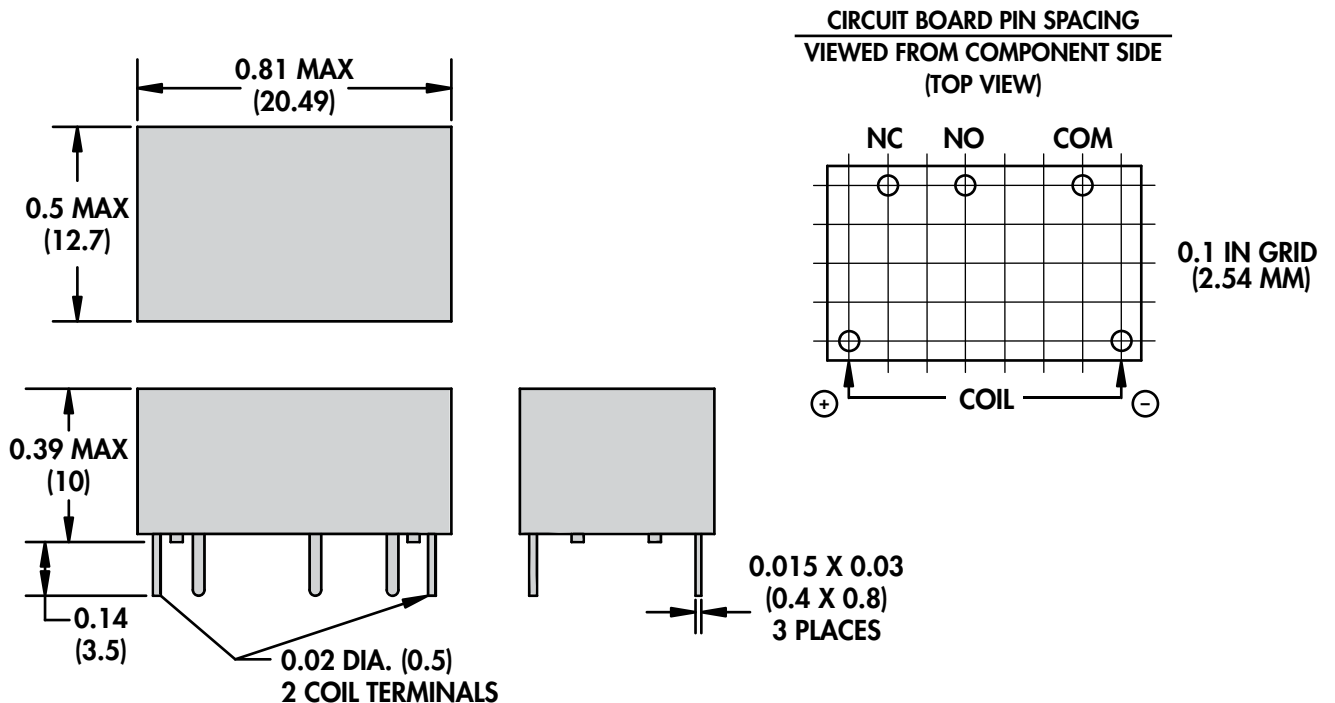
Standard Part Numbers

BOLD-FACED PART NUMBERS ARE NORMALLY STOCKED

Nominal Input Voltage	Nominal Coil Resistance (Ω)	Part Number	Contact Configuration
5 VDC	125 Ω	276AXXH-5D	SPST-NO
6 VDC	180 Ω	276AXXH-6D	SPST-NO
12 VDC	720 Ω	276AXXH-12D	SPST-NO
24 VDC	2880 Ω	276AXXH-24D	SPST-NO
5 VDC	125 Ω	276XAXH-5D	SPDT
6 VDC	180 Ω	276XAXH-6D	SPDT
12 VDC	720 Ω	276XAXH-12D	SPDT
24 VDC	2880 Ω	276XAXH-24D	SPDT

Part Number Builder

Series	Contact Configuration	Type of Seal	Coil Voltage	Current Type
276	XAX	H	-12	D
276	AXX = SPST - NO XAX = SPDT	H = Epoxy Sealed	5 = 5VDC 6 = 6VDC 12 = 12VDC 24 = 24VDC	D = DC Coil



DRAWING AND PIN SPACING ENLARGED TO 200% OF ACTUAL SIZE

Mouser Electronics

Authorized Distributor

Click to View Pricing, Inventory, Delivery & Lifecycle Information:

[Schneider Electric:](#)

[276AXXH-12D](#) [276XAXH-12D](#) [276XAXH-5D](#) [276AXXH-5D](#) [276AXXH-24D](#) [276XAXH-24D](#)