

Dimensions in this instruction sheet are in millimeters. Figures are not drawn to scale.



NOTE

- No dangerous interchangeability with systems specified in standard sheets of IEC 60309, IEC 60320, and IEC 60906; and with the declared national domestic plug and socket outlet system.
- This installation system is not a replacement for the national domestic plug and socket outlet system.

CABLE PREPARATION (FOR 450/750 V OR NYM-J TYPE)



DANGER

- Do not operate when cable is energized.
- Dangerous compatibility between different installation systems is not automatically prevented by compliance with IEC 61535.

1. Remove the outer insulating jacket and strip the wires as shown in Fig. 1.

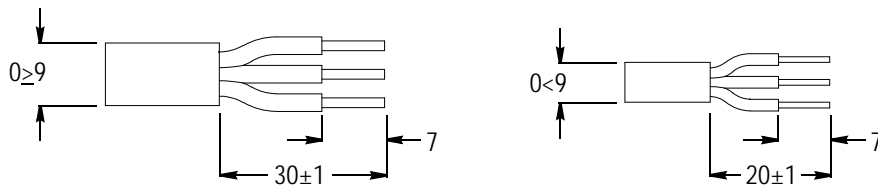


Fig. 1

2. Solder the wrapped wires using ultrasound (*preferred*) or tin solder (*optional*).

LEAD PREPARATION

Install the prepared wires inside the connector ways as shown in Fig. 2.

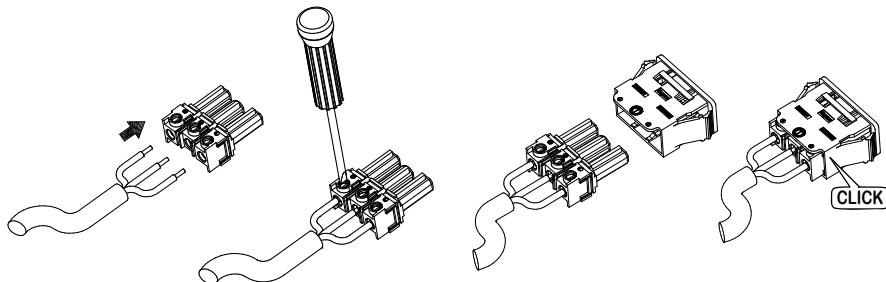


Fig. 2

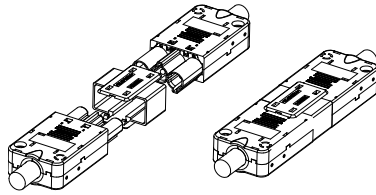
LOCKING DEVICES



CAUTION

According to VDE 0605-200, installations must be done using the locking devices given in Fig. 3.

Free Hanging Version
Locking Device 283229-[]



Panel Mount Version
Locking Device 283230-[]

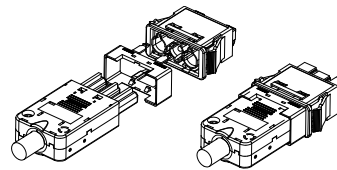


Fig. 3

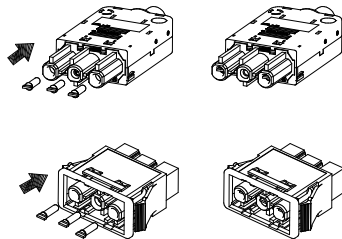
PLASTIC TAPS



CAUTION

According to VDE 0806-200, unengaged installations in readily accessible areas must be done using the plastic taps given in Fig. 4.

For Plug Connectors
Free Hanging and Panel Mount Versions
Plastic Tap 293134-[]



For Receptacle Connectors
Free-Hanging and Panel Mount Versions
Plastic Tap 293135-[]

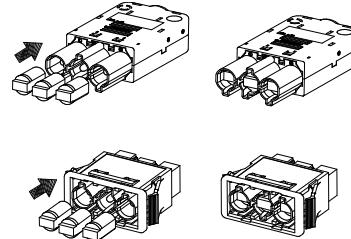


Fig. 4

The caps shall only be removed with the aid of a tool (e.g., small-nose pliers). See Fig. 5.

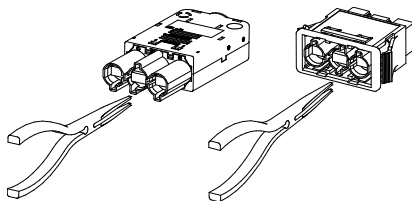


Fig. 5