

ATLANTIC VERSION TERMINATOR INTERFACE ADAPTER	PART NUMBER	REVISION	DESCRIPTION	FEED TYPE	CONVERT TO	PART NUMBERS REQUIRED					
	2150191-1	C	FINE CRIMP HEIGHT ADJUST	MECHANICAL	PNEUMATIC FEED	2119950-1	2119792-2	-	2119641-1	-	2063440-1
	2150191-2	C	FINE CRIMP HEIGHT ADJUST	PNEUMATIC	SERVO LATCH PLATE	2119951-1	1901697-1	8-2150191-5	-	-	2168400-7 (QUANTITY 2)
					SMART APPLICATOR	2161326-1	-	8-2150191-4	-	-	-
					MECHANICAL FEED	2119949-1	2063961-1	5-18022-5	2119653-1	-	-
	2150191-5	C	FINE CRIMP HEIGHT ADJUST	SERVO LATCH PLATE <sup>4</sup>	SERVO LATCH PLATE	2119951-1	1901697-1	8-2150191-5	-	-	2168400-7 (QUANTITY 2)
					SMART APPLICATOR	2161326-1	-	8-2150191-4	-	-	-
					MECHANICAL FEED	2119949-1	2063961-1	5-18022-5	2119653-1	-	-
2150191-6	C	NON-CRIMP HEIGHT ADJUST	SERVO LATCH PLATE <sup>4</sup> <sup>12</sup>	PNEUMATIC FEED	2119950-1	2119792-2	-	2119641-1	-	2063440-1	
				-	-	-	-	-	-	-	
2150191-7	C	FINE CRIMP HEIGHT ADJUST	NONE	-	-	-	-	-	-	-	
7-2150191-7	A	CRIMP TOOLING KIT	-	-	-	-	-	-	-	-	

APPLICATOR DATA		
CRIMP SIZE	TYPE	
WIRE 2.79 mm [.110]	F	
INSUL 3.56 mm [.140]	OV	
APPL INSTRUCTIONS 408-10390		

TERMINAL DATA: TE TERMINAL		TE CRIMP SPECIFICATION
TERMINAL NAME: .250 SRS FASTIN-ON RECEPTACLE		
WIRE STRIP LENGTH	INSULATION DIAMETER RANGE	
5.80-6.60 mm [.228-.260 IN]	∅2.10-3.10 mm [.083-.122 IN]	
TERMINAL APPLICATION SPECIFICATION	114-2025	
TERMINALS APPLIED <sup>14</sup>		
TE TERMINAL 160927-1	TE TERMINAL 160927-2	TE TERMINAL 160927-3
		TE TERMINAL 160927-4

WIRE SIZE	CRIMP HEIGHT mm [INCH]	CRIMP HEIGHT REFERENCE SETTING <sup>9</sup>
2.50mm2	1.77+/-0.05 [.070+/- .002]	3.9
2.00mm2	1.64+/-0.05 [.065+/- .002]	5.2
1.50mm2	1.51+/-0.05 [.059+/- .002]	6.7
1.00mm2	1.42+/-0.05 [.056+/- .002]	7.5

- <sup>1</sup> RECOMMENDED SPARE PARTS
- <sup>2</sup> GREASE BEARING SURFACES LIGHTLY
- <sup>3</sup> LUBRICATE DAILY PER THE APPLICATOR INSTRUCTION SHEET SUPPLIED WITH THE APPLICATOR.
- <sup>4</sup> APPLICATOR SPECIFIC DATA TO BE ENTERED INTO BLANK MEMORY CHIP AT ASSEMBLY. SEE BELOW FOR PART NUMBER:
  - MECHANICAL FEED WITH "SMART APPLICATOR" CONVERSION: 8-2150191-4
  - PNEUMATIC FEED WITH "SMART APPLICATOR" CONVERSION: 8-2150191-4
  - SERVO FEED WITH "FINE CRIMP HEIGHT ADJUST": 8-2150191-5
  - SERVO FEED WITH "NON-CRIMP HEIGHT ADJUST": 8-2150191-6
- <sup>5</sup> ADJUSTMENT OF THE STRIPPER MAY BE REQUIRED WHEN MOVING THE APPLICATOR BETWEEN BENCH AND LEADMAKER APPLICATIONS.
- <sup>6</sup> APPLY PART NUMBER 1-23419-5 LOCTITE TO THREADS OF ITEMS 50, 62. APPLY PART NUMBER 2-23419-6 LOCTITE TO THREADS OF ITEMS 242. FOR -6 ONLY APPLY PART NUMBER 1-23419-5 LOCTITE TO THREADS OF ITEM 37.
- <sup>7</sup> GREASE THREADS, GROOVE AND O-RING ON ITEMS 35 & 252.
- <sup>8</sup> MAGNET, ITEM 166 MUST BE ORIENTED CORRECTLY IN ORDER TO PROPERLY ACTUATE THE COUNTER.
- <sup>9</sup> CRIMP HEIGHT REFERENCE SETTING WAS THE SETTING USED WHEN THE APPLICATOR WAS QUALIFIED AT THE FACTORY. ADJUSTMENT MAY BE NECESSARY WHEN RUNNING APPLICATOR IN THE FIELD.
- <sup>10</sup> SPARE FEED CAM STORAGE LOCATION REFER TO INSTRUCTION SHEET FOR ADDITIONAL INFORMATION.
- <sup>11</sup> THE RECOMMENDED SET-UP FOR END FEED APPLICATORS IS POST-FEED WITH ITEM 2119653-1. THE APPLICATOR CAN BE CONFIGURED FOR PRE-FEED WITH ITEM 2119652-1 BUT MAY ENCOUNTER PROBLEMS WITH SOME APPLICATIONS. FEED ISSUES OR TERMINAL JAMMING MAY OCCUR IN THE PRE-FEED CONFIGURATION.
- <sup>12</sup> WHEN ASSEMBLING -6 NON-CRIMP HEIGHT ADJUST APPLICATOR USE SHIM PACK 2119957-2 TO ALIGN APPLICATOR'S MAXIMUM WIRE CRIMP HEIGHT AT NORMAL TERMINATOR SHUT HEIGHT
- <sup>13</sup> CUT TO LENGTH AT ASSEMBLY.
- <sup>14</sup> TERMINAL LUBRICANT IS RECOMMENDED.

**\*WARNING**  
ON INSTALLATION, SET WIRE DISC, ITEM 40 TO LARGEST WIRE SIZE SETTING. USE OF SETTINGS BELOW MINIMUM REQUIRED CRIMP HEIGHT SETTING WILL CAUSE DAMAGE TO CRIMP TOOLING.

ITEM NO	PART NO	DESCRIPTION	ITEM NO
-77	-7	-6	-5
-5	-2	-1	PART NO
2119957-2	APPLICATOR SHIM PACK	260	
8-21084-0	O-RING, .676 ID, .070 DIA. MAT.	252	
2119640-1	PUSH ROD, AIR FEED	250	
1803259-1	BUSHING, FLANGED	249	
2119641-1	FEED CAM, AIR FEED	248	
2119798-1	DETENT PIN	247	
1-22279-3	SPRING, COMPRESSION	246	
2119759-1	RAM, AMP STYLE, END FEED, NON-ADJUST	245	
2119082-9	CAM, SNAIL, INSULATION ADJUSTMENT	244	

**ATLANTIC VERSION**  
Shown on sheets 1 of 4 & 2 of 4  
(Pacific version shown on sheets 3 of 4 & 4 of 4)

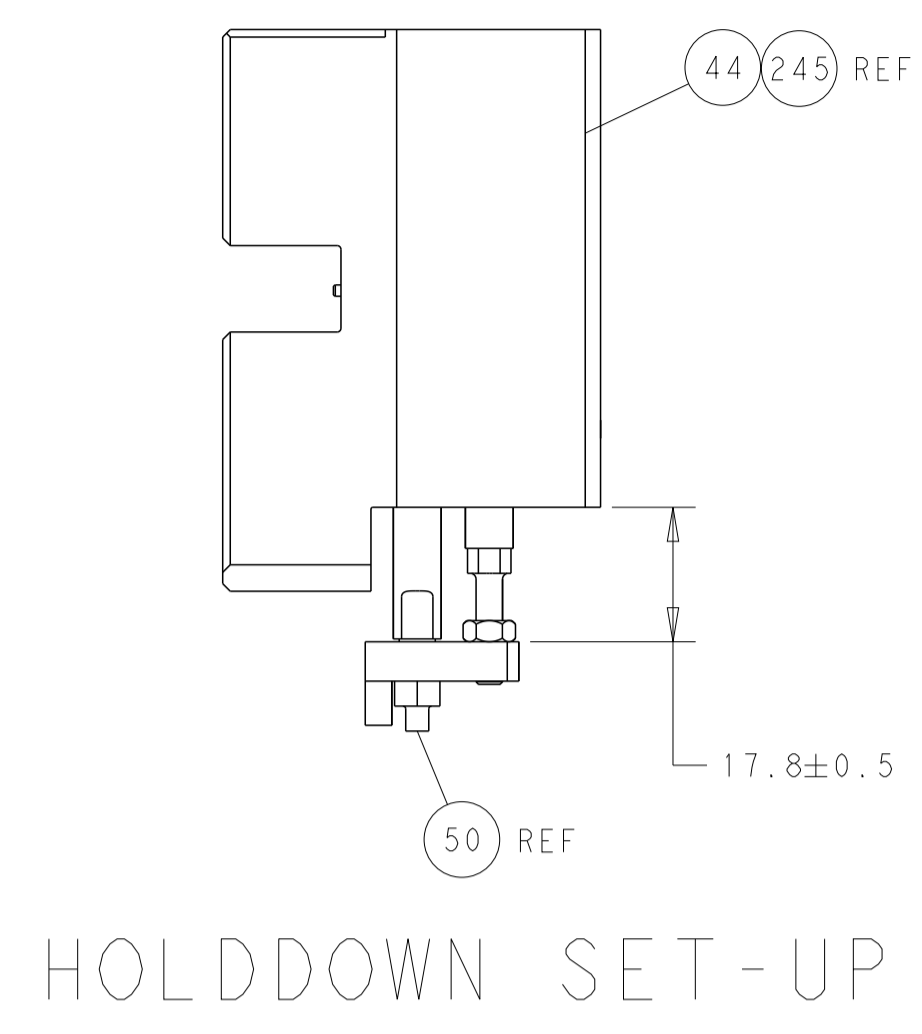
SET UP GAUGE	LOC	DIST	REVISIONS					
2119599-2	A	66	P	LTH	DESCRIPTION	DATE	OWN	APVD
			1		ORIGINAL	11JUN2013	GH	TE
			A		RELEASED	17JUL2013	GH	TE
			B		ECR-15-004887	27MAR2015	KH	TE
			C		ECR-17-009263	26JUN2017	TB	TE

ITEM NO	PART NO	DESCRIPTION	ITEM NO
-1	1	1	1
2079764-1	WASHER, WAVE SPRING, CREST-TO-CREST	243	
2119083-1	RETAINER, INSULATION DIAL	242	
2168400-7	SHCS, LOW HEAD, RoHS, M5 X 10	240	
2119580-1	MECHANICAL FEED ASSEMBLY	239	
2063440-1	AIR FEED MODULE	238	
2119740-2	TAG, IDENTIFICATION	213	
REF REF	FEED FINGER ASSEMBLY, EF	183	
6-993111-6	PIN, SLOTTED SPRING 3.0 X 14.0	177	
8-22280-7	SPRING, COMPRESSION	176	
1752353-2	GUIDE PIN, HOLDDOWN	175	
1901680-2	GUIDE PIN, HOLDDOWN	174	
21045-3	RING, RETAIN, EXTERN, 3/16 CRESCENT	172	
994969-1	MAGNET, RARE EARTH HIGH ENERGY	166	
REF REF	COUNTER, MAGNETIC	164	
240638-1	SPRING, FEED FINGER	163	
3-23627-7	PIN, RETAIN, GRVD, 3/16 X .854	137	
REF REF	MEMORY CHIP, PROGRAMMED	135	
1633743-1	SERVO FEED LATCH ASM	133	
2119955-2	ASSY, LUBRICATOR, END FEED	84	
455888-4	SPACER, CRIMPER	82	
2119956-2	DOCUMENTATION PACKAGE	71	
2-18032-2	SCR, SET, FLT POINT M3 X 10.0	70	
2119740-1	TAG, IDENTIFICATION	67	
2168078-1	SCREW, DRIVE, RH, RoHS, 2 X .188	66	
1901681-5	HOLDDOWN, TERMINAL	65	
2168400-5	SHCS, LOW HEAD, RoHS, M4 X 20	64	
2119793-1	LIMITER, ADJUSTMENT BOLT	63	
992763-5	SCR, SET, SOC, CONE POINT, M3 X 4.0	62	
2079383-4	SCR, BHSC, RoHS (M4 X 8)	60	
5-18022-5	SCR, HEX HD CAP, M4 X 6.0	59	
2063961-1	FEED FINGER	58	
2168400-4	SHCS, LOW HEAD, RoHS, M4 X 8	57	
2168083-3	SCR, SKT HD CAP, RoHS, M4 X 12.0	56	
5018030-2	NUT, HEX, REG, RoHS, M4	55	
5018030-1	NUT, HEX, REG, RoHS, M3	54	
986965-8	NUT, LOCK, HEX, TORQUE (M4)	53	
1-5018030-0	NUT, HEX, REG, RoHS, M3.5	52	
2119792-2	PAWL, EF, AIR	51	
1-1976055-1	STANDOFF, HOLD-DOWN	50	
18023-9	SCR, SKT HD CAP M4 X 6.0	49	
2119652-1	FEED CAM, PRE FEED	48	
2119653-1	FEED CAM, POST FEED	47	
2119655-5	APPLICATOR BASIC ASSEMBLY, EF	46	
2119369-1	RAM, AMP STYLE, END FEED	44	
2079383-7	SCR, BHSC, RoHS (M8 X 25)	41	
2119645-1	DISC, NUMBERED FA WIRE ADJUSTMENT	40	
2119957-1	APPLICATOR SHIM PACK	39	
2119644-1	RAM WASHER, PRECISION	38	
2119085-1	FA HEAD, ATLANTIC STYLE	37	
2119092-1	BOLT, ADJUSTMENT	35	
1-18028-2	WASHER, FLAT, REG M4	33	
2168083-9	SCR, SKT HD CAP, RoHS, M4 X 20	31	
1-2168083-0	SCR, SKT HD CAP, RoHS, M4 X 10	29	
240639-1	STRIPPER (MACHINING)	27	
1320906-1	STUD, THREADED	25	
1752371-3	PLATE, STRIP GUIDE	24	
240825-1	PLATE, STRIP HOLD DOWN	23	
2-22281-3	SPRING, COMPRESSION	22	
1752373-4	DRAG	20	
1901259-5	GUIDE, LOWER STRIP	18	
1-2079383-1	SCR, BHSC, RoHS (M6 X 12)	17	
1752360-1	SPACER, HOLD-DOWN	13	
240644-1	PLATE, REAR SHEAR	11	
-	-	-	-
690482-4	PLATE, FRONT SHEAR	9	
1333219-6	ANVIL, COMBINATION	8	
1-2217206-0	BLADE, SLUG	7	
-	-	-	-
1-240641-2	SPACER	5	
238009-1	BLOCK, FL CRIMPER SPACER	4	
3-2119785-3	CRIMPER, INSULATION OVERLAP PREMIUM	3	
455888-7	SPACER, CRIMPER	2	
5-730251-9	CRIMPER, WIRE	1	

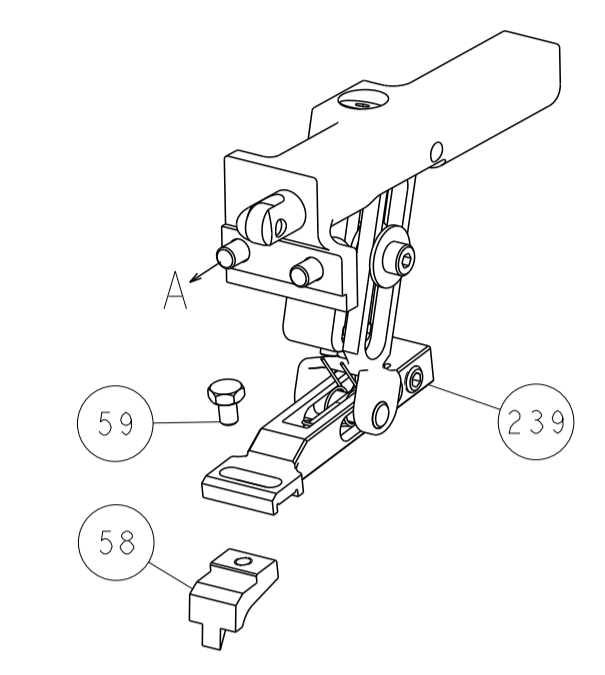
DIMENSIONS:			TOLERANCES UNLESS OTHERWISE SPECIFIED:		
mm	0 PLC	±	1 PLC	±	3 PLC
	5 PLC	±	4 PLC	±	4 PLC
	ANGLES	±	FINISH	±	

DRAWING NO	2150191
SCALE	1:1
SHEET	1 OF 4
REV	C

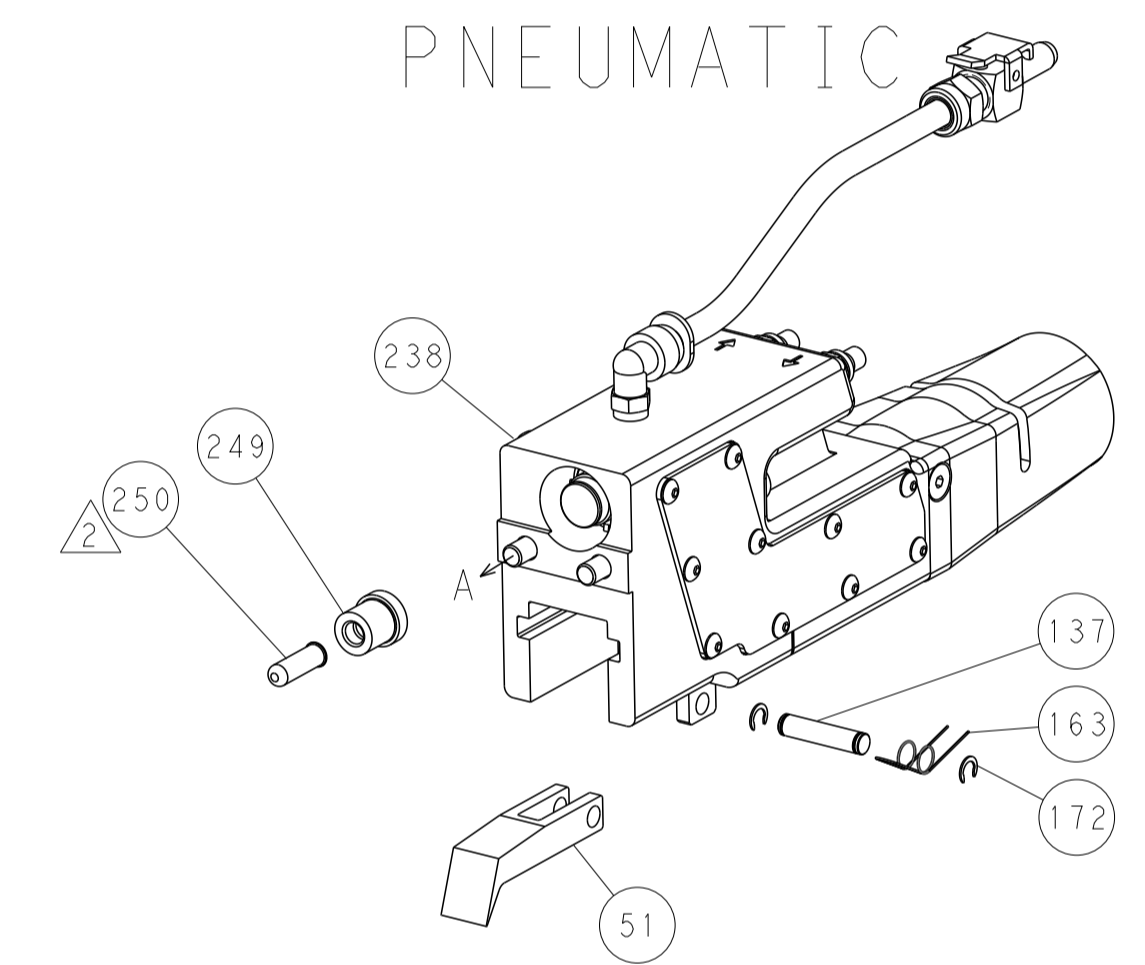
LOC		DIST		REVISIONS			
A	66	P	LTM	DESCRIPTION	DATE	OWN	APVD
		-		SEE SHEET 1			



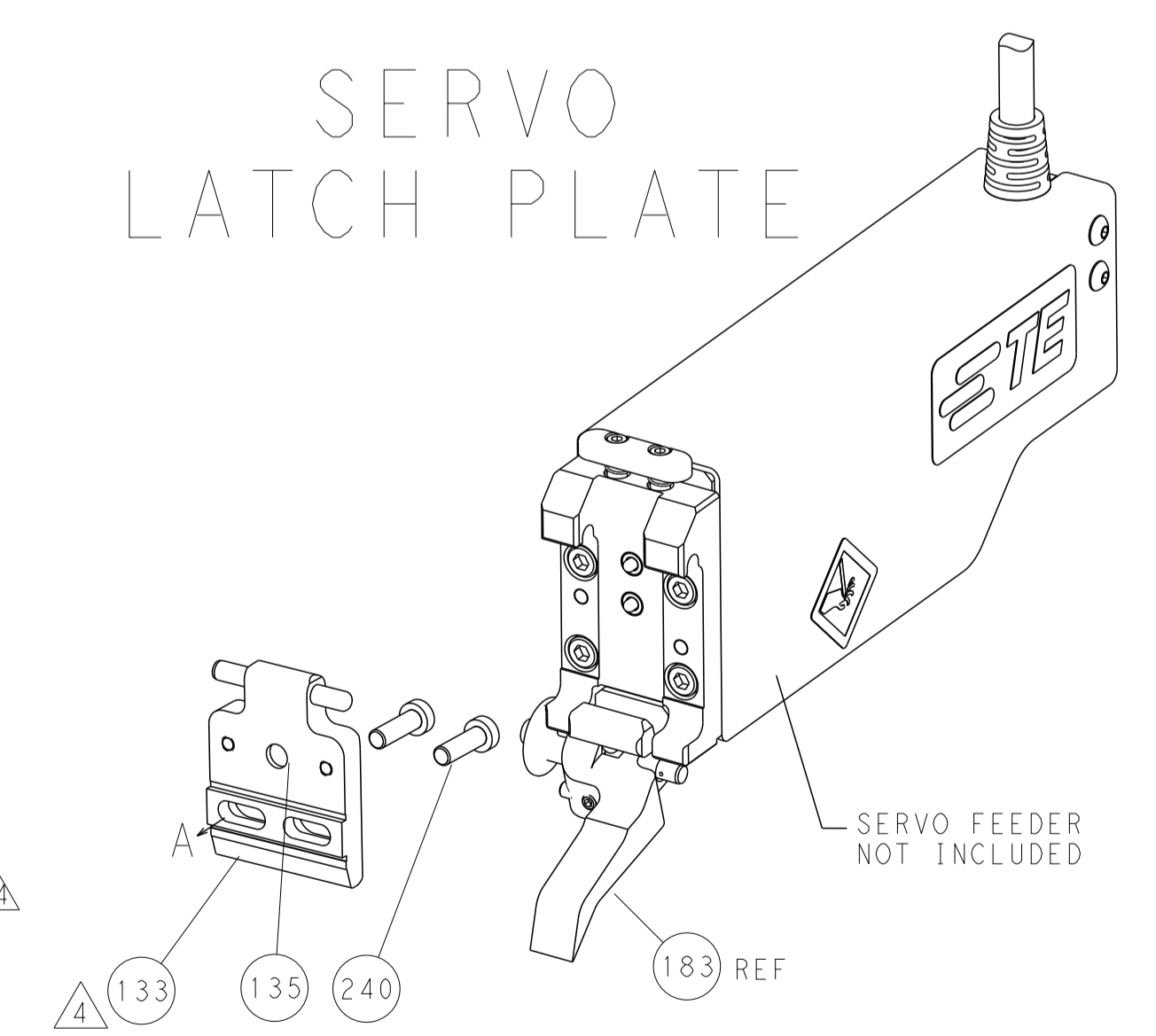
FEED TYPE  
MECHANICAL



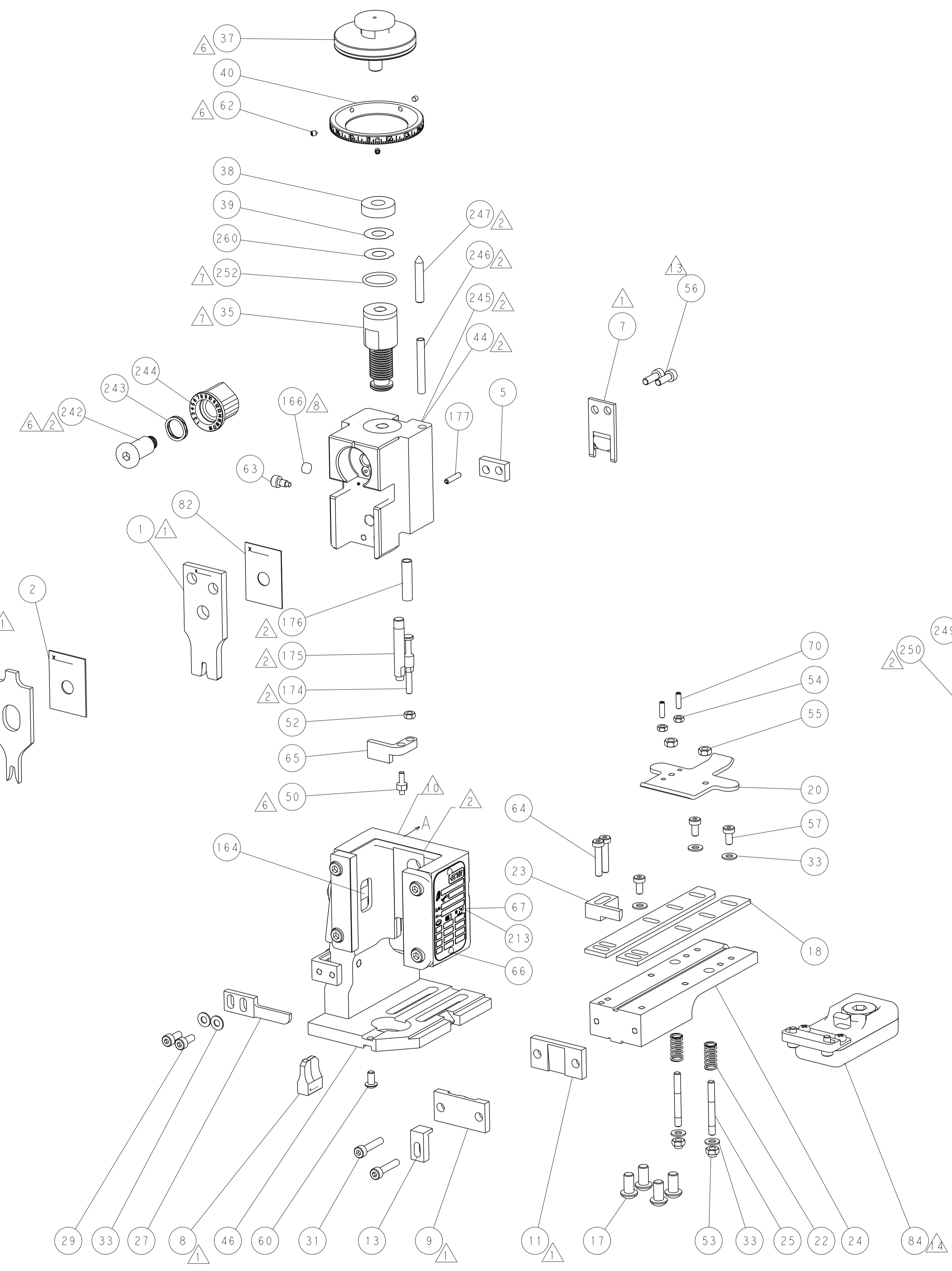
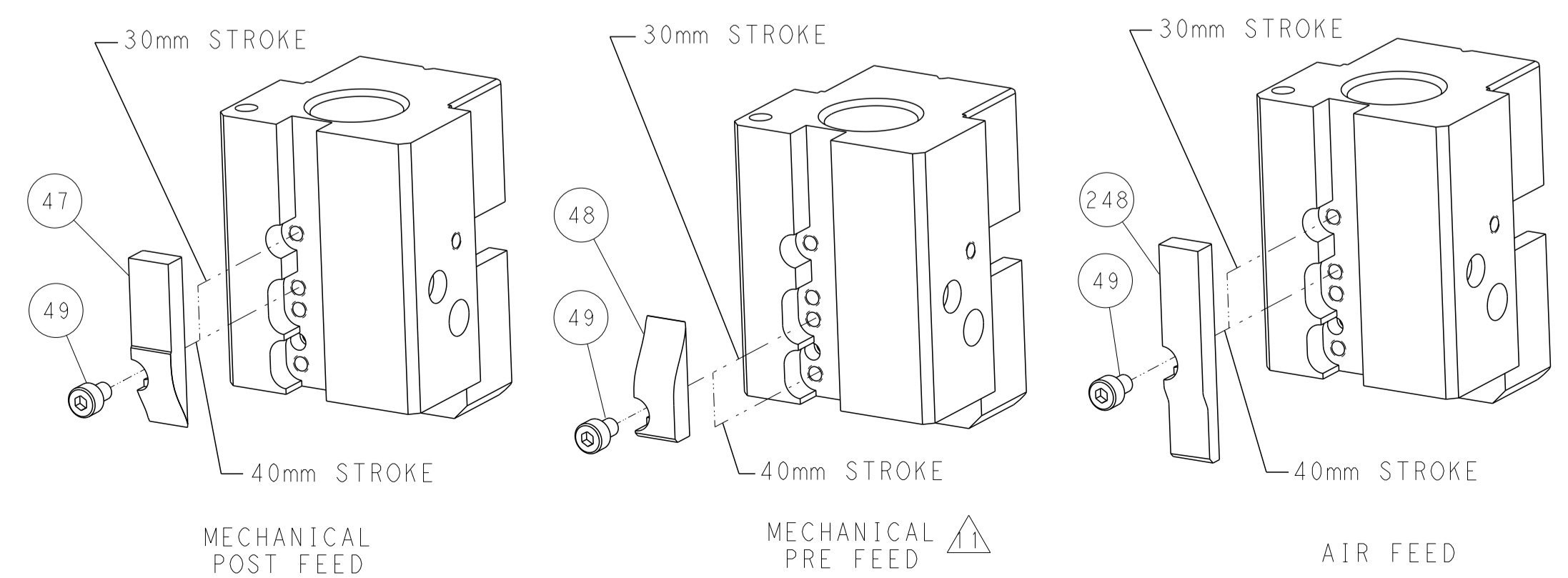
PNEUMATIC



SERVO  
LATCH PLATE



CAM POSITIONS



ATLANTIC VERSION  
 Shown on sheets 1 of 4 & 2 of 4  
 (Pacific version shown on sheets 3 of 4 & 4 of 4)

DIMENSIONS:		TOLERANCES UNLESS OTHERWISE SPECIFIED:		OWN: HOFFNER 11JUN2013		TE Connectivity	
mm		0 PLC ±		CHK: T. ELBIN 12JUN2013		Harrisburg, PA 17105-3608	
Ø		1 PLC ±		APVD: T. ELBIN 12JUN2013		NAME: Ocean End Feed	
MATERIAL:		2 PLC ±		PRODUCT SPEC:		RESTRICTED TO:	
		3 PLC ±		APPLICATION SPEC:		SIZE: CAGE CODE: DRAWING NO:	
		4 PLC ±		WEIGHT:		A1 00779 C=2150191	
		ANGLES ±		Customer Accessible Production Drawing		SCALE: 1:1 SHEET 2 OF 4 REV C	
		FINISH:		SHEETS 3 & 4 ARE NOT REQUIRED FOR ATLANTIC VERSION			

PACIFIC VERSION TERMINATOR INTERFACE ADAPTER	PART NUMBER	REVISION	DESCRIPTION	FEED TYPE	APPLICATOR STYLE CONVERSION CHART						
					CONVERT TO	PART NUMBERS REQUIRED					
	2-2150191-1	C	FINE CRIMP HEIGHT ADJUST	MECHANICAL	PNEUMATIC FEED	2119950-1	2119792-2	-	2119641-2	-	2063440-1
					SERVO LATCH PLATE	2119951-1	1901697-1	8-2150191-5	-	2168400-7 (QUANTITY 2)	
					SMART APPLICATOR	2161326-1	-	8-2150191-4	-	-	
	2-2150191-2	C	FINE CRIMP HEIGHT ADJUST	PNEUMATIC	MECHANICAL FEED	2119949-1	2063961-1	5-18022-5	2119653-2	-	-
					SERVO LATCH PLATE	2119951-1	1901697-1	8-2150191-5	-	2168400-7 (QUANTITY 2)	
					SMART APPLICATOR	2161326-1	-	8-2150191-4	-	-	
	2-2150191-5	C	FINE CRIMP HEIGHT ADJUST	SERVO LATCH PLATE	MECHANICAL FEED	2119949-1	2063961-1	5-18022-5	2119653-2	-	-
					PNEUMATIC FEED	2119950-1	2119792-2	-	2119641-2	-	2063440-1
	2-2150191-7	C	FINE CRIMP HEIGHT ADJUST	NONE	-	-	-	-	-	-	-
	7-2150191-7	A	CRIMP TOOLING KIT	-	-	-	-	-	-	-	-

APPLICATOR DATA		
CRIMP	SIZE	TYPE
WIRE	2.79 mm (.110)	F
INSUL	3.56 mm (.140)	OV
APPL INSTRUCTIONS 408-10390		

TERMINAL DATA: TE TERMINAL		TE CRIMP SPECIFICATION	
TERMINAL NAME: .250 SRS FAST-IN-ON RECEPTACLE			
WIRE STRIP LENGTH		INSULATION DIAMETER RANGE	
5.80-6.60 mm (.228-.260 IN)		Ø2.10-3.10 mm (.083-.122 IN)	
TERMINAL APPLICATION SPECIFICATION	114-2025	-	-
TERMINALS APPLIED			
TE TERMINAL	TE TERMINAL	TE TERMINAL	TE TERMINAL
160927-1	160927-2	160927-3	160927-4

WIRE SIZE	CRIMP HEIGHT mm [INCH]	CRIMP HEIGHT REFERENCE SETTING
2.50mm2	1.77 +/- 0.05 [ .070 +/- .002 ]	3.9
2.00mm2	1.64 +/- 0.05 [ .065 +/- .002 ]	5.2
1.50mm2	1.51 +/- 0.05 [ .059 +/- .002 ]	6.7
1.00mm2	1.42 +/- 0.05 [ .056 +/- .002 ]	7.5

- RECOMMENDED SPARE PARTS
- GREASE BEARING SURFACES LIGHTLY
- 3. LUBRICATE DAILY PER THE APPLICATOR INSTRUCTION SHEET SUPPLIED WITH THE APPLICATOR.
- APPLICATOR SPECIFIC DATA TO BE ENTERED INTO BLANK MEMORY CHIP AT ASSEMBLY. SEE BELOW FOR PART NUMBER:  
 MECHANICAL FEED WITH "SMART APPLICATOR" CONVERSION: 8-2150191-4  
 PNEUMATIC FEED WITH "SMART APPLICATOR" CONVERSION: 8-2150191-4  
 SERVO FEED WITH "FINE CRIMP HEIGHT ADJUST": 8-2150191-5
- 5. ADJUSTMENT OF THE STRIPPER MAY BE REQUIRED WHEN MOVING THE APPLICATOR BETWEEN BENCH AND LEADMAKER APPLICATIONS.
- APPLY PART NUMBER 1-23419-5 LOCTITE TO THREADS OF ITEMS 50, 62. APPLY PART NUMBER 2-23419-6 LOCTITE TO THREADS OF ITEMS 242.
- GREASE THREADS, GROOVE AND O-RING ON ITEMS 139 & 153.
- MAGNET, ITEM 166 MUST BE ORIENTED CORRECTLY IN ORDER TO PROPERLY ACTUATE THE COUNTER.
- CRIMP HEIGHT REFERENCE SETTING WAS THE SETTING USED WHEN THE APPLICATOR WAS QUALIFIED AT THE FACTORY. ADJUSTMENT MAY BE NECESSARY WHEN RUNNING APPLICATOR IN THE FIELD.
- SPARE FEED CAM STORAGE LOCATION REFER TO INSTRUCTION SHEET FOR ADDITIONAL INFORMATION.
- THE RECOMMENDED SET-UP FOR END FEED APPLICATORS IS POST-FEED WITH ITEM 2119653-1. THE APPLICATOR CAN BE CONFIGURED FOR PRE-FEED WITH ITEM 2119652-1 BUT MAY ENCOUNTER PROBLEMS WITH SOME APPLICATIONS. FEED ISSUES OR TERMINAL JAMMING MAY OCCUR IN THE PRE-FEED CONFIGURATION.
- CUT TO LENGTH AT ASSEMBLY.
- TERMINAL LUBRICANT IS RECOMMENDED.

**\*WARNING**  
 ON INSTALLATION, SET WIRE DISC, ITEM 40 TO LARGEST WIRE SIZE SETTING. USE OF SETTINGS BELOW MINIMUM REQUIRED CRIMP HEIGHT SETTING WILL CAUSE DAMAGE TO CRIMP TOOLING.

-	1	1	1	1	2119782-1	FINE ADJUST HEAD ASM, PACIFIC STYLE	251
-	-	-	1	-	2119640-1	PUSH ROD, AIR FEED	250
-	-	-	1	-	1803259-1	BUSHING, FLANGED	249
-	1	1	1	1	1-22279-3	SPRING, COMPRESSION	246
-	1	1	1	1	2119082-9	CAM, SNAIL, INSULATION ADJUSTMENT	244
-	1	1	1	1	2079764-1	WASHER, WAVE SPRING, CREST-TO-CREST	243
-	1	1	1	1	2119083-1	RETAINER, INSULATION DIAL	242
-77-	27-	25-	22-	21	PART NO	DESCRIPTION	ITEM NO

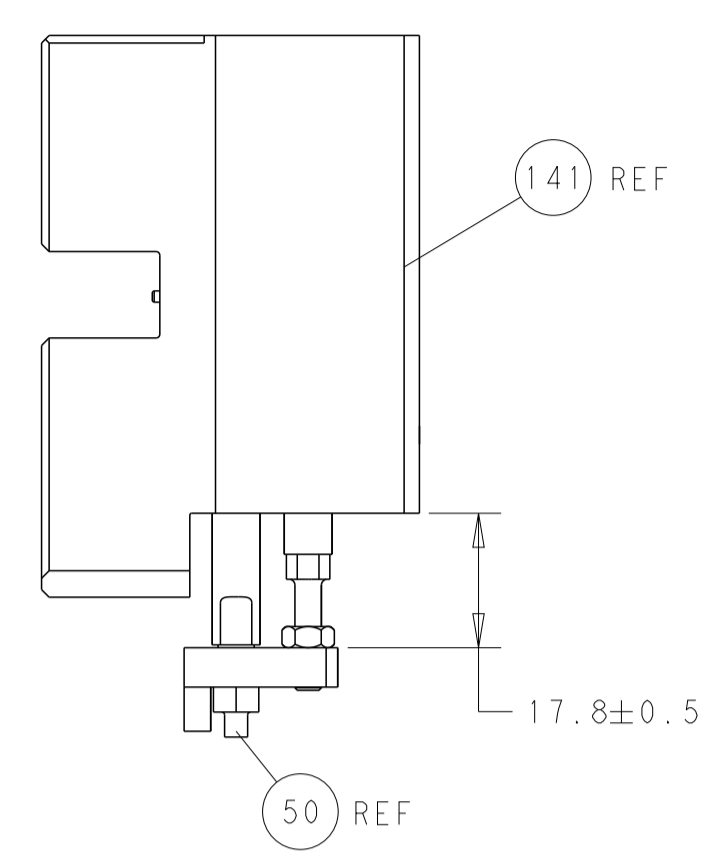
PACIFIC VERSION  
 Shown on sheets 3 of 4 & 4 of 4  
 (Atlantic version shown on sheets 1 of 4 & 2 of 4)

SET UP GAUGE	LOC	DIST	REVISIONS			
2119599-2	A	66	REV	DATE	BY	APPD
-	-	-	SEE SHEET 1	-	-	-

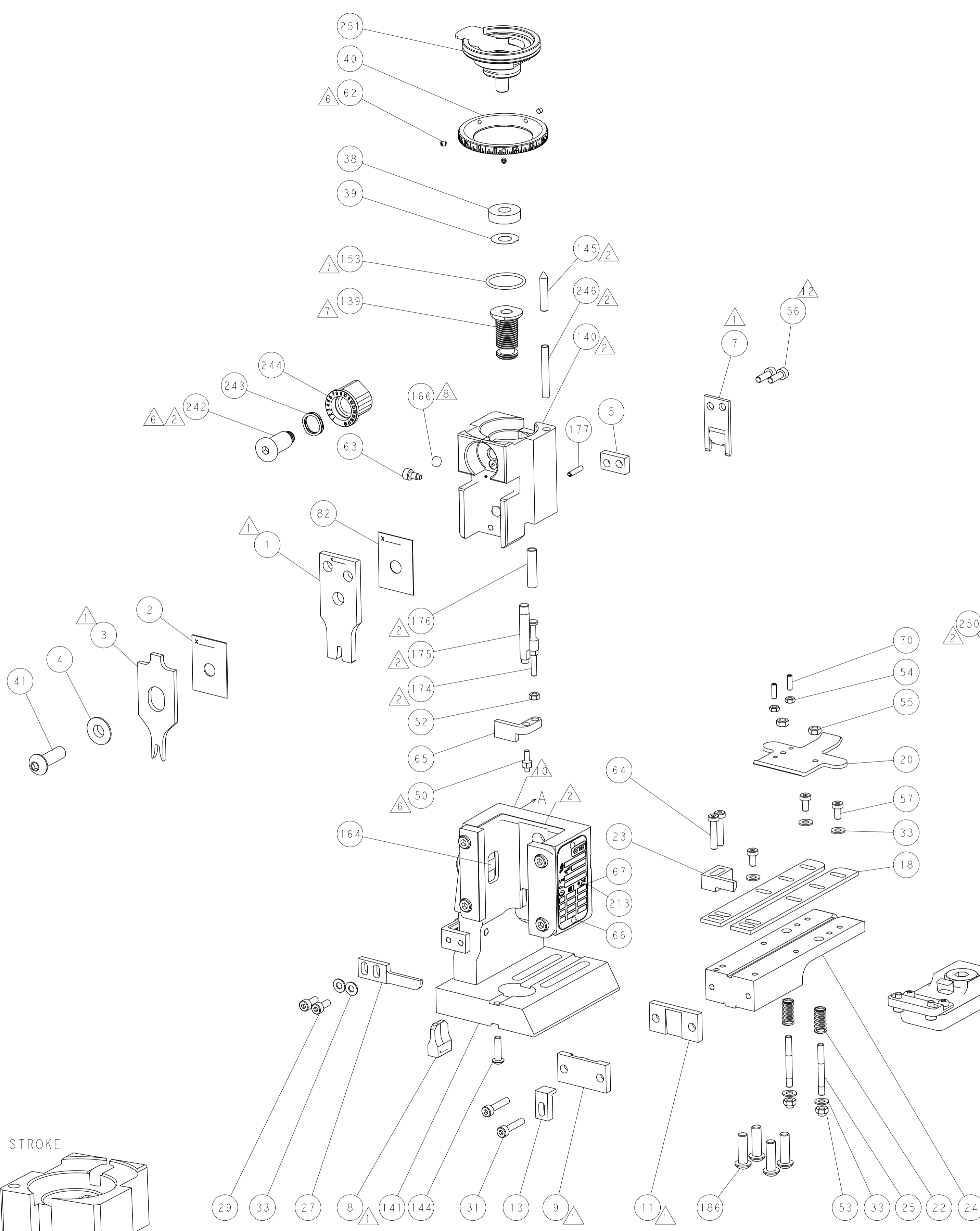
-	-	2	-	-	2168400-7	SHCS, LOW HEAD, RoHS, M5 X 10	240
-	-	-	-	1	2119580-1	MECHANICAL FEED ASSEMBLY	239
-	-	-	-	1	2063440-1	AIR FEED MODULE	238
-	-	1	-	-	2119740-2	TAG, IDENTIFICATION	213
-	4	4	4	4	2079383-9	SCR, BHSC, RoHS (M6 X 20)	186
-	-	REF	-	-	1901697-1	FEED FINGER ASSEMBLY, EF	183
-	1	1	1	1	6-9931111-6	PIN, SLOTTED SPRING 3.0 X 14.0	177
-	1	1	1	1	8-22280-7	SPRING, COMPRESSION	176
-	1	1	1	1	1752353-2	GUIDE PIN, HOLDDOWN	175
-	1	1	1	1	1901680-2	GUIDE PIN, HOLDDOWN	174
-	-	-	2	-	21045-3	RING, RETAIN, EXTERN, 3/16 CRESCENT	172
-	1	1	1	1	994969-1	MAGNET, RARE EARTH HIGH ENERGY	166
-	REF	REF	REF	REF	994970-2	COUNTER, MAGNETIC	164
-	-	-	1	-	240638-1	SPRING, FEED FINGER	163
-	1	1	1	1	8-21084-1	O-RING, .801 ID, .070 DIA. MAT.	153
-	-	-	1	-	2119641-2	FEED CAM, AIR FEED	152
-	1	1	1	1	2119798-2	DETENT PIN	145
-	1	1	1	1	2079383-8	SCR, BHSC, RoHS (M4 X 16)	144
-	-	-	-	1	2119653-2	FEED CAM, POST FEED	142
-	1	1	1	1	2119655-6	APPLICATOR BASIC ASSEMBLY, EF	141
-	1	1	1	1	2119651-1	RAM, ASIAN STYLE, END FEED	140
-	1	1	1	1	2119092-2	BOLT, ADJUSTMENT	139
-	-	-	1	-	3-23627-7	PIN, RETAIN, GRVD, 3/16 X .854	137
-	-	REF	-	-	SEE NOTE 4	MEMORY CHIP, PROGRAMMED	135
-	-	1	-	-	1633743-1	SERVO FEED LATCH ASM	133
-	1	1	1	1	2119955-2	ASSY, LUBRICATOR, END FEED	84
-	1	1	1	1	455888-4	SPACER, CRIMPER	82
-	1	1	1	1	2119956-2	DOCUMENTATION PACKAGE	71
-	2	2	2	2	2-18032-2	SCR, SET, FLT POINT M3 X 10.0	70
-	1	-	-	1	2119740-1	TAG, IDENTIFICATION	67
-	2	2	2	2	2168078-1	SCREW, DRIVE, RH, RoHS, 2 x .188	66
-	1	1	1	1	1901681-5	HOLDDOWN, TERMINAL	65
-	2	2	2	2	2168400-5	SHCS, LOW HEAD, RoHS, M4 X 20	64
-	1	1	1	1	2119793-1	LIMITER, ADJUSTMENT BOLT	63
-	3	3	3	3	992763-5	SCR, SET, SOC, CONE POINT, M3 X 4.0	62
-	-	-	-	1	5-18022-5	SCR, HEX HD CAP, M4 X 6.0	59
-	-	-	-	1	2063961-1	FEED FINGER	58
-	3	3	3	3	2168400-4	SHCS, LOW HEAD, RoHS, M4 X 8	57
-	2	2	2	2	2168083-3	SCR, SKT HD CAP, RoHS, M4 X 12.0	56
-	2	2	2	2	5018030-2	NUT, HEX, REG, RoHS, M4	55
-	2	2	2	2	5018030-1	NUT, HEX, REG, RoHS, M3	54
-	2	2	2	2	986965-8	NUT, LOCK, HEX, TORQUE (M4)	53
-	1	1	1	1	1-5018030-0	NUT, HEX, REG, RoHS, M3.5	52
-	-	-	-	1	2119792-2	PAWL, EF, AIR	51
-	1	1	1	1	1-1976055-1	STANDOFF, HOLD-DOWN	50
-	-	-	-	2	18023-9	SCR, SKT HD CAP M4 X 6.0	49
-	-	-	-	1	2119652-1	FEED CAM, PRE FEED	48
-	1	1	1	1	2079383-7	SCR, BHSC, RoHS (M8 X 25)	41
-	1	1	1	1	2119645-1	DISC, NUMBERED FA WIRE ADJUSTMENT	40
-	1	1	1	1	2119957-1	APPLICATOR SHIM PACK	39
-	1	1	1	1	2119644-1	RAM WASHER, PRECISION	38
-	7	7	7	7	1-18028-2	WASHER, FLAT, REG M4	33
-	2	2	2	2	2168083-9	SCR, SKT HD CAP, RoHS, M4 X 20	31
-	2	2	2	2	1-2168083-0	SCR, SKT HD CAP, RoHS, M4 X 10	29
-	1	1	1	1	240639-1	STRIPPER (MACHINING)	27
-	2	2	2	2	1320906-1	STUD, THREADED	25
-	1	1	1	1	1752371-3	PLATE, STRIP GUIDE	24
-	1	1	1	1	240825-1	PLATE, STRIP HOLD DOWN	23
-	2	2	2	2	2-22281-3	SPRING, COMPRESSION	22
-	1	1	1	1	1752373-4	DRAG	20
-	2	2	2	2	1901259-5	GUIDE, LOWER STRIP	18
-	1	1	1	1	1752360-1	SPACER, HOLD-DOWN	13
-	1	1	1	1	240644-1	PLATE, REAR SHEAR	11
-	-	-	-	-	-	-	10
-	1	1	1	1	690482-4	PLATE, FRONT SHEAR	9
-	1	1	1	1	1333219-6	ANVIL, COMBINATION	8
-	1	1	1	1	1-2217206-0	BLADE, SLUG	7
-	-	-	-	-	-	-	6
-	1	1	1	1	1-240641-2	SPACER	5
-	1	1	1	1	238009-1	BLOCK, FL CRIMPER SPACER	4
-	1	1	1	1	3-2119785-3	CRIMPER, INSULATION OVERLAP PREMIUM	3
-	1	1	1	1	455888-7	SPACER, CRIMPER	2
-	1	1	1	1	5-730251-9	CRIMPER, WIRE	1
-77-	27-	25-	22-	21	PART NO	DESCRIPTION	ITEM NO

DIMENSIONS: mm 		TOLERANCES UNLESS OTHERWISE SPECIFIED: 0 PLC ± 1 PLC ± 2 PLC ± 3 PLC ± 4 PLC ± ANGLES ± FINISH ±		DWN: HOFFNER 11JUN2013 CHK: T. ELBIN 12JUN2013 APVD: T. ELBIN 12JUN2013	NAME: Ocean End Feed Applicator SIZE: A1 CASE CODE: 00779 DRAWING NO: C=2150191 RESTRICTED TO: Customer Accessible Production Drawing
MATERIAL:				WEIGHT:	SCALE: 1:1 SHEET: 3 OF 4 REV: C

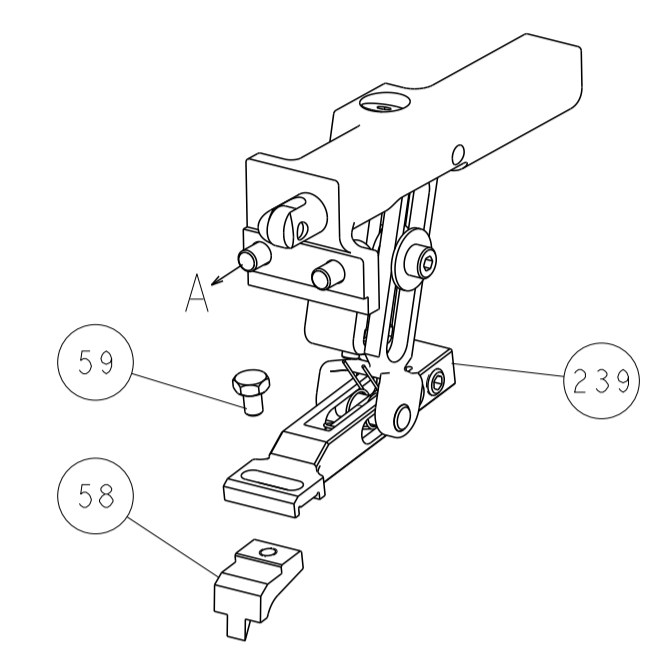
LOC		DIST		REVISIONS			
A	66	P	LTM	DESCRIPTION	DATE	OWN	APVD
		-		SEE SHEET 1			



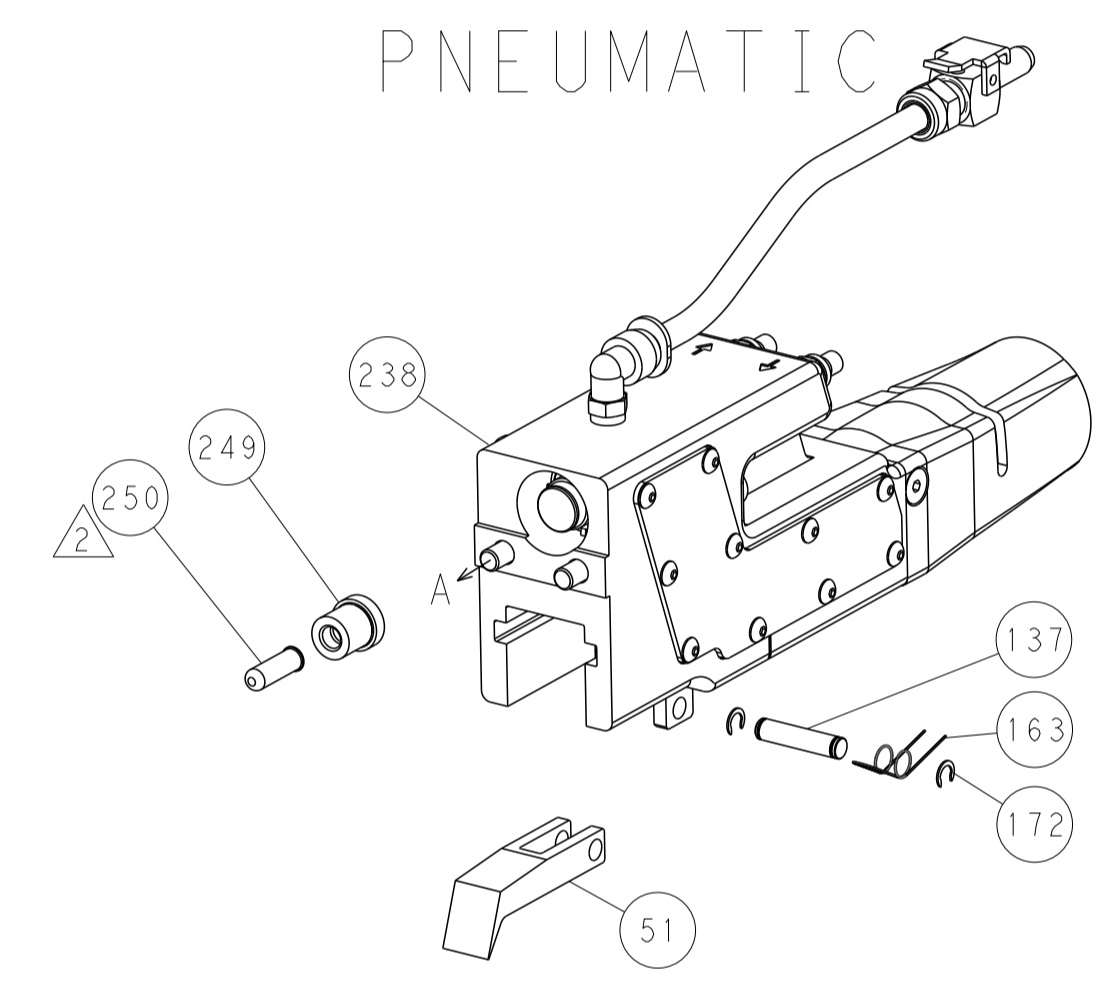
HOLDDOWN SET-UP



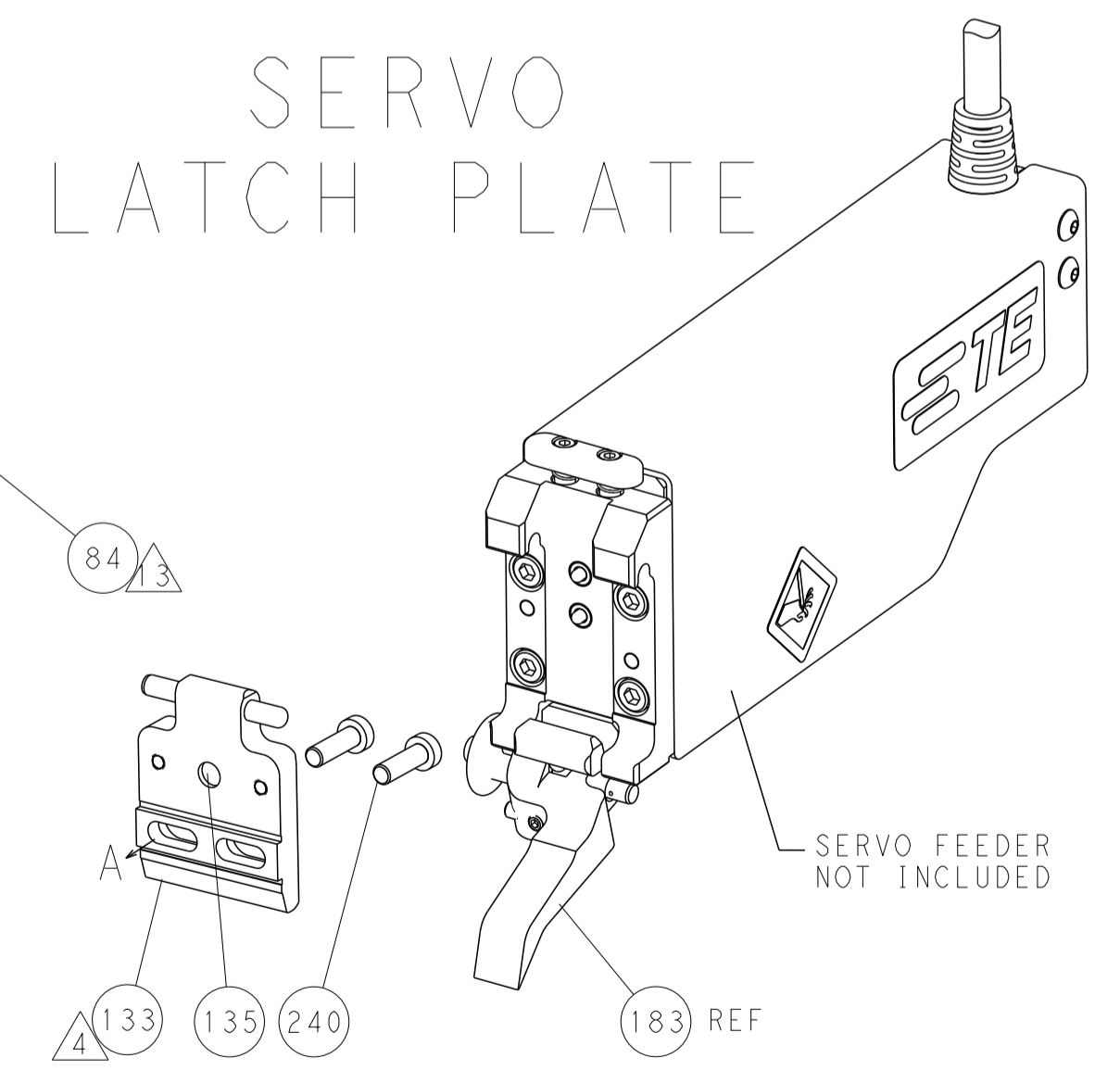
FEED TYPE  
MECHANICAL



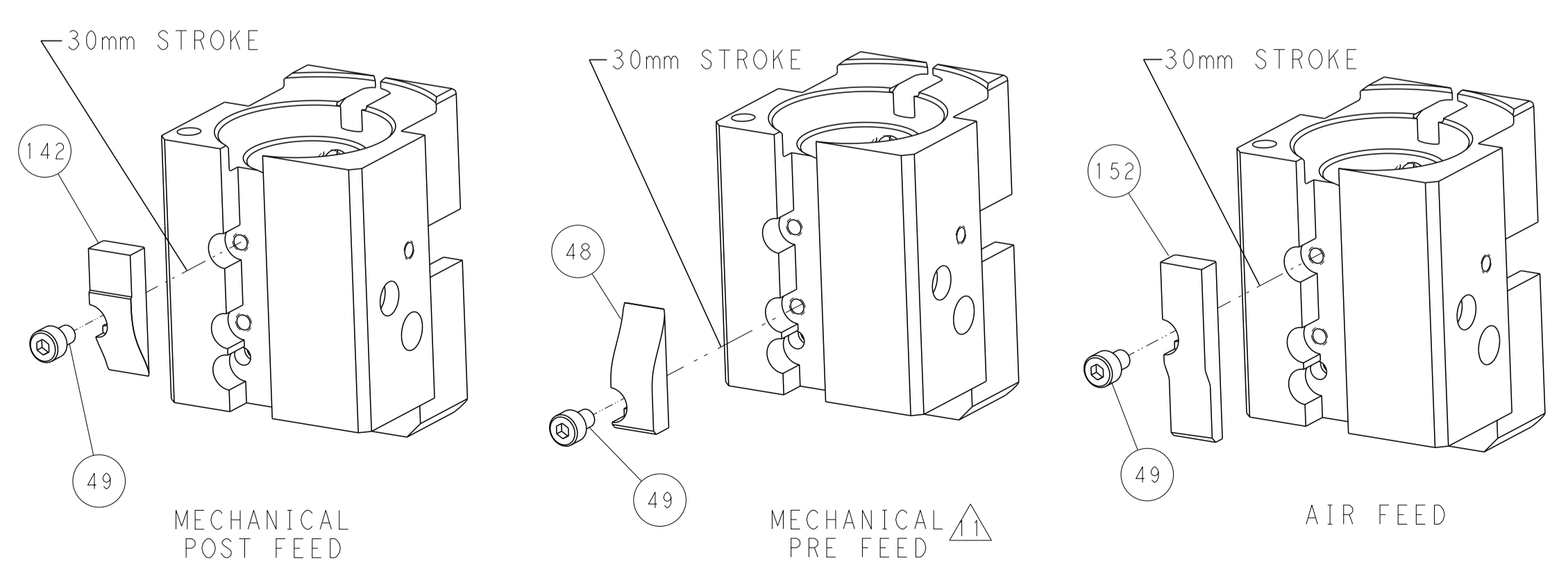
PNEUMATIC



SERVO  
LATCH PLATE



CAM POSITIONS



PACIFIC VERSION  
 Shown on sheets 3 of 4 & 4 of 4  
 (Atlantic version shown on sheets 1 of 4 & 2 of 4)

DIMENSIONS:		TOLERANCES UNLESS OTHERWISE SPECIFIED:		DWN: HOFFNER 11JUN2013		TE Connectivity	
mm	0 PLC ±	1 PLC ±	2 PLC ±	3 PLC ±	4 PLC ±	5 PLC ±	Harrisburg, PA 17105-3608
	ANGLES	FINISH		APVD: T. ELBIN 12JUN2013		NAME: Ocean End Feed Applier	
MATERIAL:				PRODUCT SPEC		SIZE: CAGE CODE: DRAWING NO: A1 00779 C=2150191	
				APPLICATION SPEC		RESTRICTED TO:	
				WEIGHT:		SCALE: 1:1 SHEET 4 OF 4 REV C	
				Customer Accessible Production Drawing			