

4

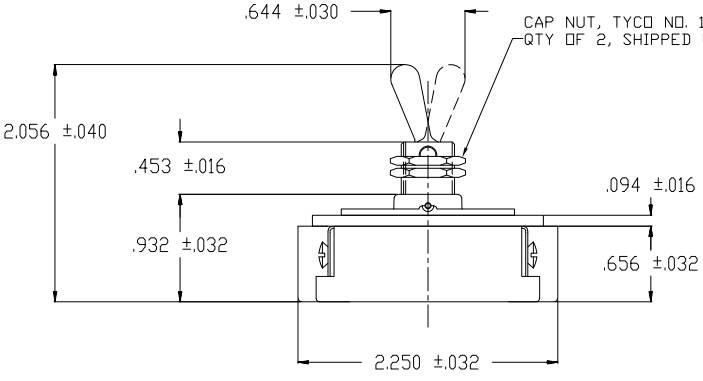
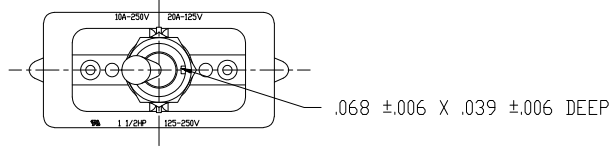
3

2

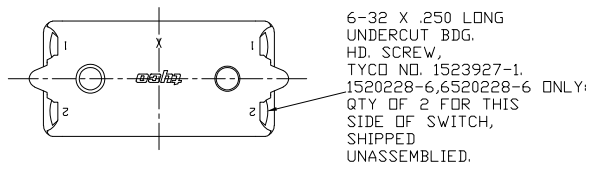
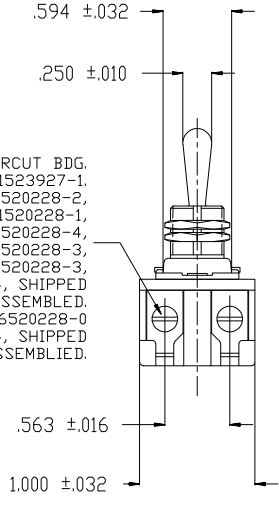
1

THIS DRAWING IS UNPUBLISHED. RELEASED FOR PUBLICATION BY TYCO ELECTRONICS CORPORATION. ALL RIGHTS RESERVED.

LOC	DIST	REVISIONS					
AD	00	P	LTR	DESCRIPTION	DATE	MIN	APVD
		A		EC0G3G-0266-02	30SEP02	WL	WBH



- 6-32 X .250 LONG UNDERCUT BDG. HD. SCREW, TYCO NO. 1523927-1.
- SWITCHES 1520228-1, 1520228-2, 1520228-3, 1-1520228-1, 2-1520228-3, 2-1520228-4, 6520228-1, 6520228-2, 6520228-3, 1-6520228-1, 2-6520228-3, 2-6520228-4: QTY OF 4, SHIPPED UNASSEMBLED.
- SWITCH 1-1520228-0, 1-6520228-0 ONLY: QTY OF 4, SHIPPED ASSEMBLED.

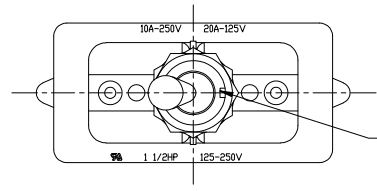


2-1520228-4/2-6520228-4	7360K8 T-PAK	15/32" THD - DIE CAST	DPST
2-1520228-3/2-6520228-3	7360K7 T-PAK	11/32" THD - DIE CAST	DPST
1-1520228-1/1-6520228-1	8910K219	15/32" THD - DIE CAST	DPST
1-1520228-0/1-6520228-0	8910K205	11/32" THD - DIE CAST	DPST
1520228-6/6520228-6	7362K4	15/32" THD - DIE CAST	SPST WITH BUSSING
1520228-3/6520228-3	7360K7	11/32" THD - DIE CAST	DPST
1520228-2/6520228-2	7359K3	15/32" THD - DIE CAST	DPST
1520228-1/6520228-1	7359K2	11/32" THD - DIE CAST	DPST
TYCO NO.	ARAB NO.	BUSHING / PLATE ASSY	DESCRIPTION

- NOTES:
1. T-PAK - SWITCH AND HARDWARE INDIVIDUALLY PACKED IN PLASTIC BAGS BEFORE BEING PLACED IN AN INTERMEDIATE BOX WHICH IS THEN PLACED IN A SHIPPING BOX. SEE TABLE.
 2. P/N X-6520228-X IS ROHS COMPLIANT

THIS DRAWING IS A CONTROLLED DOCUMENT.		REV	26SEP02	tyco Electronics	Tyco Electronics Corporation Arab, AL 35016			
DIMENSIONS: INCHES		OK			NAME	20 AMP 125V AC/DC, 10 AMP 250V AC/DC, 1 1/2 HP 125V/250V AC/DC, ONE HOLE MOUNTING TOOL HANDLE TOGGLE SWITCH		
MATERIAL		APVD			PRODUCT SPEC	SIZE	ONE CODE (DRAWING NO)	RESTRICTED TO
FINISH		HEIGHT		APPLICATION SPEC	A2	00779	C=1520228	
CUSTOMER DRAWING				SCALE		1:1	SHEET 1 OF 4	

LOC	DIST	REVISIONS		DATE	MIN	APPRO
AD	00	P	LTR	DESCRIPTION		
-	-	-	-	SEE SHEET 1	-	-



.068 ±.006 X .039 ±.006 DEEP

.594 ±.032

.644 ±.030

CAP NUT, TYCO NO. 1522128-1 - 1520228-4, 6520228-4 ONLY: QTY OF 2, SHIPPED UNASSEMBLED. 1520228-7, 6520228-7 ONLY: QTY OF 1, SHIPPED UNASSEMBLED.

.250 ±.010

1520228-7 ONLY: TYCO NO. 1522121-1 LOCK NUT, QTY OF 1, SHIPPED UNASSEMBLED.

4 HOLES FOR 6-32 X .250 LONG UNDERCUT BDG. HD. SCREW TYCO NO. 1523927-1 SHIPPED UNASSEMBLED

2.056 ±.040

.453 ±.016

.094 ±.016

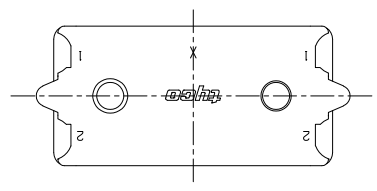
.932 ±.032

.656 ±.032

2.250 ±.032

.563 ±.016

1.000 ±.032



NOTES

- 1. T-PAK - SWITCH AND HARDWARE INDIVIDUALLY PACKED IN PLASTIC BAGS BEFORE BEING PLACED IN AN INTERMEDIATE BOX WHICH IS THEN PLACED IN A SHIPPING BOX. SEE TABLE.
- 2. P/N X-6520228-X IS ROHS COMPLIANT.

91-399

1520228-7 / 6520228-7	8909K23	15/32" THD - DIE CAST	DPST T-PAK'ED W/ SPECIAL HARDWARE
1520228-4 / 6520228-4	7360K8	15/32" THD - DIE CAST	DPST
TYCO NO.	ARAB NO.	BUSHING / PLATE ASSY	DESCRIPTION

DIMENSIONS:		OTHER DIMENSIONS:		MATERIAL:		FINISH:	
INCHES	PLC	PLC	PLC	PLC	PLC	PLC	PLC
	PLC	PLC	PLC	PLC	PLC	PLC	PLC
	PLC	PLC	PLC	PLC	PLC	PLC	PLC
	PLC	PLC	PLC	PLC	PLC	PLC	PLC
	PLC	PLC	PLC	PLC	PLC	PLC	PLC
	PLC	PLC	PLC	PLC	PLC	PLC	PLC
	PLC	PLC	PLC	PLC	PLC	PLC	PLC
	PLC	PLC	PLC	PLC	PLC	PLC	PLC
	PLC	PLC	PLC	PLC	PLC	PLC	PLC
	PLC	PLC	PLC	PLC	PLC	PLC	PLC
	PLC	PLC	PLC	PLC	PLC	PLC	PLC

4

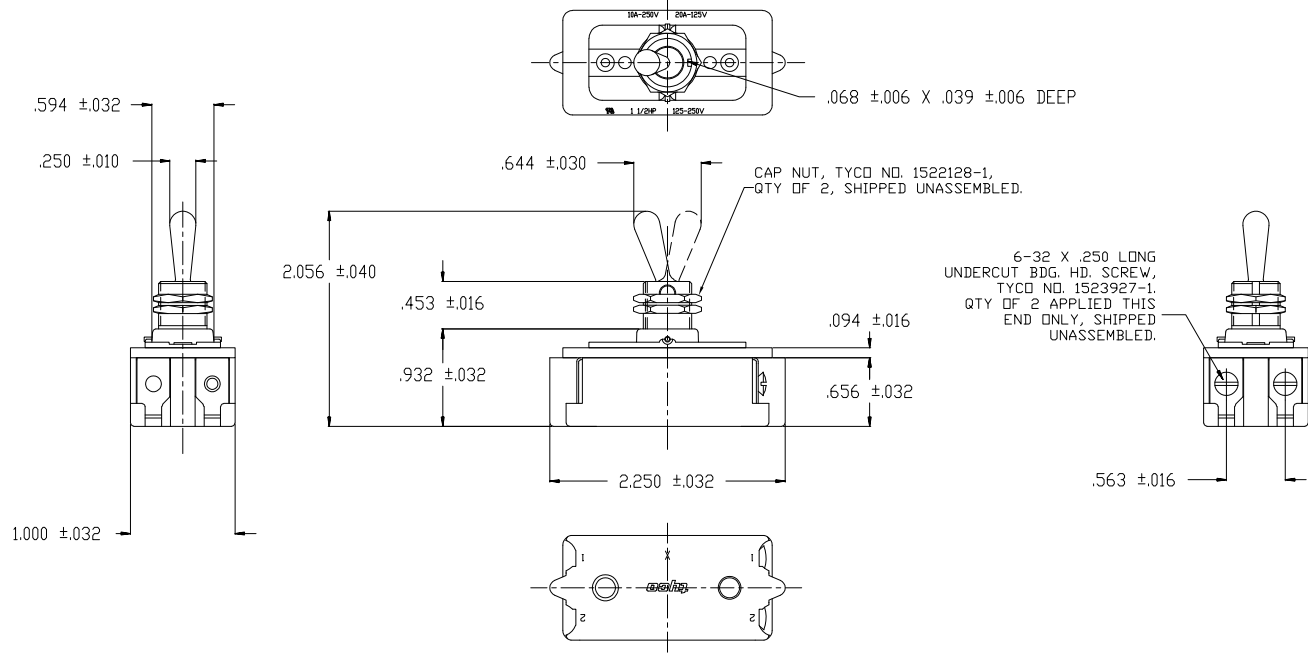
3

2

1

THIS DRAWING IS UNPUBLISHED. RELEASED FOR PUBLICATION
 © COPYRIGHT BY TYCO ELECTRONICS CORPORATION. ALL RIGHTS RESERVED.

LOC	DIST	REVISIONS		
P	LTR	DESCRIPTION	DATE	BY
AD	00	SEE SHEET 1		



- NOTES
1. T-PAK - SWITCH AND HARDWARE INDIVIDUALLY PACKED IN PLASTIC BAGS BEFORE BEING PLACED IN A INTERMEDIATE BOX WHICH IS THEN PLACED IN A SHIPPING BOX. SEE TABLE.
 2. PLY-D-PAK - SWITCH AND HARDWARE INDIVIDUALLY PACKED IN PLASTIC BAGS BEFORE BEING PACKED LOOSE IN A SHIPPING BOX. SEE TABLE.
 3. P/N X-6520228-X IS ROHS COMPLIANT.

2-1520228-5/2-6520228-5	7361K5 T-PAK	15/32" THD - DIE CAST	SPST
1520228-9/ 6520228-9	8910K191	15/32" THD - DIE CAST	SPST (PLY-D-PAK)
1520228-5/ 6520228-5	7361K5	15/32" THD - DIE CAST	SPST
TYCO NO.	ARAB NO.	BUSHING / PLATE ASSY	DESCRIPTION

THIS DRAWING IS A CONTROLLED DOCUMENT.

DESIGNED BY: J. SMITH 130E077	DATE: 130E077	TYCO Electronics Corporation
CHECKED BY: S. GLENN 130E077	DATE: 130E077	Arab, AL 35016
APPROVED BY: M.R. DUMMER 180E077	DATE: 180E077	
PRODUCT SPEC: ---	NAME: ---	
APPLICATION SPEC: ---	SIZE: 20 AMP 125V AC/DC, 10 AMP 250V AC/DC, 1 1/2 HP 125V/250V AC/DC, ONE HOLE MOUNTING TOOL HANDLE TOGGLE SWITCH	RESTRICTED TO: ---
HEIGHT: ---	SIZE CODE (DRAWING NO): A2 00779	SCALE: 1:1
MATERIAL: ---	FINISH: ---	SHEET 3 OF 4
CUSTOMER DRAWING		REV B

90-7016

4

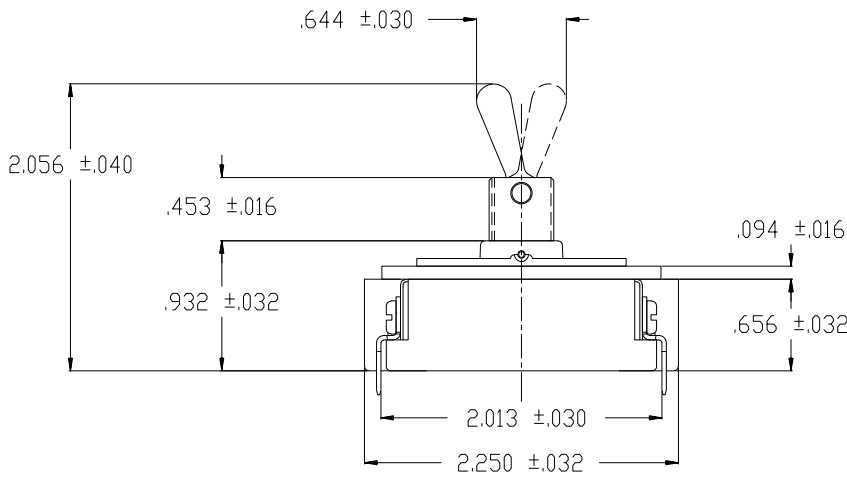
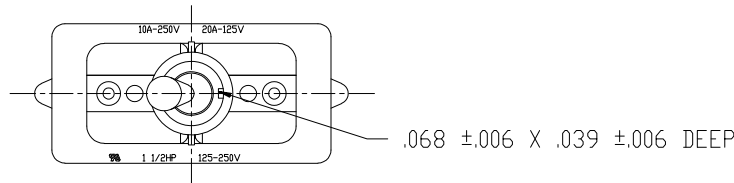
3

2

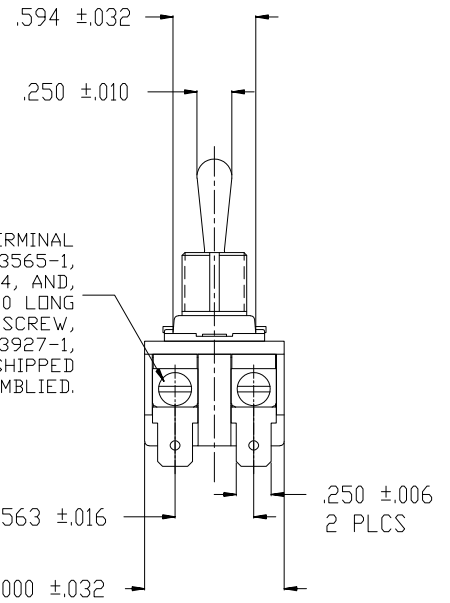
1

THIS DRAWING IS UNPUBLISHED. RELEASED FOR PUBLICATION
BY TYCO ELECTRONICS CORPORATION. ALL RIGHTS RESERVED.

LOC	DIST	REVISIONS		
AD	00	P	LN	DATE
		SEE SHEET 1		



QUICK CONNECT TERMINAL
TYCO NO. 1523565-1,
QTY OF 4, AND,
6-32 X .250 LONG
UNDERCUT BDG. HD. SCREW,
TYCO NO. 1523927-1,
QTY OF 4, SHIPPED
ASSEMBLED.



NOTES:
1. P/N X-6520228-X IS ROHS COMPLIANT.

TYCO NO.	ARAB NO.	BUSHING / PLATE ASSY	DESCRIPTION
1520228-8/6520228-8	8910K12	15/32" THD - DIE CAST	DPST

THIS DRAWING IS A CONTROLLED DOCUMENT.		DRW: T. CHRISTENSEN 2502195	91-601	
DIMENSIONS: INCHES		CHK: W. HANSON 01NOV95	Tyco Electronics Corporation Arab, AL 35016	
TOLERANCES UNLESS OTHERWISE SPECIFIED:		APP: M.R. DIMMER 08NOV95	Tyco Electronics	
Ø	PLC	± .005	NAME: 20 AMP 125V AC/DC, 10 AMP 250V AC/DC	
Ø	PLC	± .005	PRODUCT SPEC: 1 1/2 HP 125V/250V AC/DC, ONE HOLE MOUNTING TOOL HANDLE TOGGLE SWITCH	
Ø	PLC	± .005	APPLICATION SPEC: -	
Ø	PLC	± .005	SIZE: A2	
Ø	PLC	± .005	ONE CODE (DRAWING NO): 00779	
Ø	PLC	± .005	HEIGHT: -	
Ø	PLC	± .005	RESTRICTED TO: -	
Ø	PLC	± .005	MATERIAL: -	
Ø	PLC	± .005	FINISH: -	
MATERIAL: -		CUSTOMER DRAWING		SCALE: 1:1
FINISH: -		SHEET: 4 OF 4		REV: B

AMP 1471-9 REV 31MM2000

27SEP02 .8.42am AMP66478 K:\ECN_Direction\ARAB\Active_Ecn's\ECOG36-0266-02_C-1520228_UPDATE\