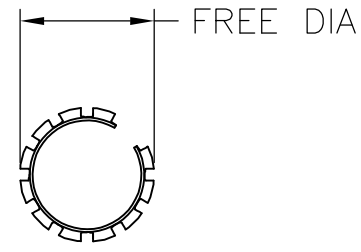
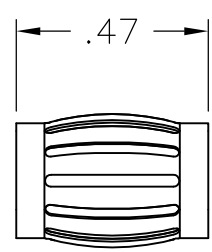
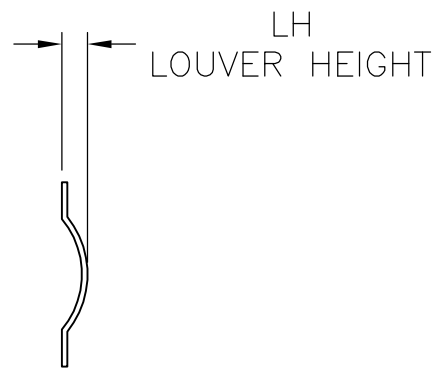
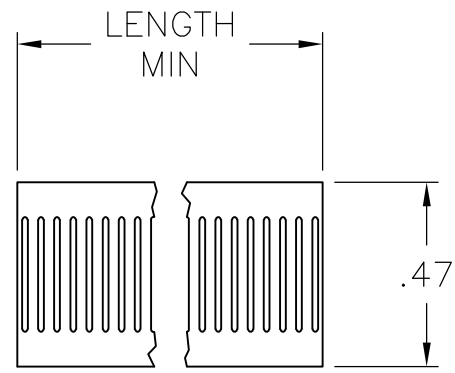


THIS DRAWING IS UNPUBLISHED. RELEASED FOR PUBLICATION
 © COPYRIGHT - By - ALL RIGHTS RESERVED.

LOC	DIST	REVISIONS					
		P	LTR	DESCRIPTION	DATE	DWN	APVD
		M		REVISED PER ECO-16-001979	15FEB2016	NK	MZ



STYLE B
(MALE)



STYLE C
(STRIP)

- 1 FINISH: SILVER PLATE 200uIN MIN THICK.
- 2 FINISH: NICKEL PLATE 40uIN MIN THICK.
- 3 FINISH: GOLD PLATE 10uIN MIN THICK.
- 4 FINISH: NICKEL PLATE 50uIN MIN THICK.
- 5 FINISH: NICKEL PLATE 100uIN MIN THICK.
- 6 NOT USED.
- 7 NOT USED.
- 8 NOT USED.
- 9 NOT USED.
- 10 NOT USED.
- 11 PLATING NOTES ARE TO BE INTERPRETED AS FOLLOWS, 6-8 AS 6 OVER 8.
- 12 MATERIAL: CDA172, BeCu.
- 13 MATERIAL: STAINLESS STEEL.

- 14 PRODUCT IS SOLD BY THE FOOT.
- 15 FINISH: PREPLATED SILVER 200 uIN MIN, OVER NICKEL .040 uIN MIN.
- 16 REELED PRODUCT.
- 17 PRELIMINARY PART NUMBER.
- 18 OBSOLETE PART NUMBER.
- 19 OBSOLETEPARTS: OBSOLETE CIS STREAMLINING PER D.RENAUD/D.SINISI

	STYLE	LH	FREE DIA	MAT'L (NOTE)	MATING DIA REF	PLATING	NUM LOUV	MAT'L THK	REF	PART NUMBER
18									03088	4-192039-5
18									03087	4-192039-4
18									03051	4-192039-3
18									03050	4-192039-2
19	B	[.036]	[.58]	12	16.51[.650]	UNPL	43	0.20[.008]	03119	4-192039-1
OBSOLETE	B	[.032]	[.58]	12	14.22[.560]	1-2	43	0.15[.006]	03124	4-192039-0
18										3-192039-9
19	B	[.038]	[.46]	12	12.7[.500]		34	0.20[.008]	03122	3-192039-8
OBSOLETE	B	[.038]	[.46]	12	12.7[.500]	1-2	34	0.20[.008]	03121	3-192039-7
OBSOLETE	B	[.038]	[.46]	12	12.7[.500]	UNPL	34	0.20[.008]	03048	3-192039-6
OBSOLETE	B	[.032]	[.46]	12	12.7[.500]	1-2	--	0.15[.006]	03129	3-192039-5
OBSOLETE	B	[.032]	[.46]	12	12.7[.500]	UNPL	34	0.15[.006]	03110	3-192039-4
OBSOLETE	B	[.034]	[.33]	12	9.52[.375]	1-2	24	0.20[.008]	03148	3-192039-3
OBSOLETE									03042	3-192039-2
18									03041	3-192039-1
SUPERSEDED BY 2-192039-7										
	B	[.036]	[.31]	12	7.9[.311]	3-2	21	0.20[.008]	03082	3-192039-0
OBSOLETE	B	[.036]	[.31]	12	7.9[.311]	1-2	21	0.20[.008]	03036	2-192039-9
19									03035	2-192039-8
19	B	[.036]	[.31]	12	7.9[.311]	UNPL	21	0.20[.008]	03066	2-192039-7
19	B	[.036]	[.30]	12	7.37[.291]	UNPL	20	0.20[.008]	03120	2-192039-6
18									03034	2-192039-5
18									03030	2-192039-4
18	B	[.036]	[.30]	12	6.3[.248]	1-2	17	0.20[.008]	03027	2-192039-3
OBSOLETE	B	[.036]	[.30]	12	6.3[.248]	UNPL	17	0.20[.008]	03026	2-192039-2
	B	[.033]	[.27]	12	6.3[.248]	1-2	16	0.20[.008]	03140	2-192039-1
19	B	[.033]	[.27]	12	6.3[.248]	UNPL	16	0.20[.008]	03139	2-192039-0
OBSOLETE	B	[.036]	[.25]	12	6.0[.236]	3-2	15	0.20[.008]	03024	1-192039-9
	B	[.034]	[.20]	12	4.0[.157]	4	9	0.20[.008]	03017	1-192039-8
	B	[.034]	[.20]	12	4.0[.157]	3-2	9	0.20[.008]	03016	1-192039-7
	B	[.034]	[.20]	12	4.0[.157]	UNPL	9	0.20[.008]	03071	1-192039-6
19									03015	1-192039-5
	B	[.032]	[.20]	12	4.0[.157]	3-2	9	0.15[.006]	03014	1-192039-4
	B	[.032]	[.20]	12	4.0[.157]	4	9	0.15[.006]	03128	1-192039-3
OBSOLETE	B	[.032]	[.20]	12	4.0[.157]	UNPL	9	0.15[.006]	03073	1-192039-2
	B	[.020]	[.20]	13	4.0[.157]	UNPL	9	0.12[.005]	03091	1-192039-1
14	C	[.038]		12	--	3-2	--	0.20[.008]	03115	1-192039-0
18										192039-9
19	14	C	[.038]	12	--	1-2	--	0.20[.008]	03116	192039-8
OBSOLETE	14	C	[.038]	12	--	UNPL	--	0.20[.008]	03078	192039-7
OBSOLETE	14	C	[.034]	12	--	3-2	--	0.15[.006]	03003	192039-6
	14	C	[.034]	12	--	1-2	--	0.15[.006]	03094	192039-5
18	14	C	[.034]	12	--	UNPL	--	0.15[.006]	03057	192039-4
19	14	C	[.020]	13	--	UNPL	--	0.12[.005]	03138	192039-3
OBSOLETE									03079	192039-2
18									03067	192039-1

THIS DRAWING IS A CONTROLLED DOCUMENT. DWN RA JAYNE 09-12-91
 CHK RA JAYNE 09-12-91

DIMENSIONS: INCHES. TOLERANCES UNLESS OTHERWISE SPECIFIED:
 0 PLC ± -
 1 PLC ± -
 2 PLC ± .02
 3 PLC ± .010
 4 PLC ± -
 ANGLES ± -

MATERIAL: SEE TABLE. FINISH: -

TE Connectivity
 CONTACT BAND, LAIIS, MALE


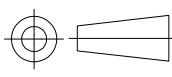
SIZE: A2 CAGE CODE: 00779 DRAWING NO: 192039
 WEIGHT: -

CUSTOMER DRAWING SCALE: NTS SHEET: 1 OF 2 REV: M

THIS DRAWING IS UNPUBLISHED. RELEASED FOR PUBLICATION
 © COPYRIGHT - By - ALL RIGHTS RESERVED.

LOC	DIST	REVISIONS			
P	LTR	DESCRIPTION	DATE	DWN	APVD
FT	0	SEE SHEET 1	-	-	-

19	OBSELETE	B	[.038]	[.46]	12	12.7[.500]	3-2	34	0.20[.008]	--	5-192039-9
16		C	[.034]	--	12		--	15	.006	--	5-192039-8
		B	[.036]	[.25]	12	6.0[.236]	UNPL	15	.008	--	5-192039-7
		B	[.036]	[.33]	12	9.52[.375]	UNPL	24	.008	--	5-192039-6
		B	[.032]	[.58]	12	14.22[.560]	UNPL	43	.006	--	5-192039-5
		B	[.033]	[.20]	12	4.0[.157]	5	9	0.20[.008]	--	5-192039-4
		B			12	6.0[.236]	5	16	0.20[.008]	--	5-192039-3
		SUPERSEDED BY 2-192039-0					--	--	--	--	5-192039-2
		B	[.036]	[1.71]	12	44.78[1.763]	3-2	130	0.15[.006]	--	5-192039-1
19	OBSELETE	B	[.034]	[3.50]	12	98.55[3.880]	UNPL	92	0.15[.006]	03126	5-192039-0
		NOT AVAILABLE					--	--	--	03084	4-192039-9
		B	[.036]	[1.91]	12	50.8[2.000]	UNPL	145	0.20[.008]	03096	4-192039-8
		B	[.036]	[1.71]	12	44.78[1.763]	1-2	130	0.15[.006]	03125	4-192039-7
	OBSELETE	B	[.036]	[1.71]	12	44.78[1.763]	UNPL	130	0.15[.006]	03145	4-192039-6
		STYLE	LH	FREE DIA	MATL (NOTE)	MATING ϕ REF	PLATING	NUM LOUV	MAT'L THK	REF	PART NO.

THIS DRAWING IS A CONTROLLED DOCUMENT.		DWN RA JAYNE 11-04-91	 TE Connectivity CONTACT BAND, LAHS, MALE
DIMENSIONS: INCHES		CHK RA JAYNE 11-04-91	
		APVD -	
TOLERANCES UNLESS OTHERWISE SPECIFIED:		NAME	
0 PLC ± -		PRODUCT SPEC	SIZE
1 PLC ± -		APPLICATION SPEC	CAGE CODE
2 PLC ± .02		WEIGHT	DRAWING NO
3 PLC ± .010		CUSTOMER DRAWING	RESTRICTED TO
4 PLC ± -		SCALE NTS	SHEET 2 of 2
ANGLES ± -		REV M	
FINISH			
SEE TABLE			

Mouser Electronics

Authorized Distributor

Click to View Pricing, Inventory, Delivery & Lifecycle Information:

[TE Connectivity:](#)

[2-192039-1](#)