

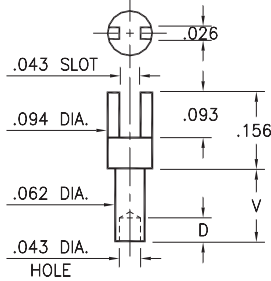
# MALE PCB PINS

## SOLDER TERMINALS SLOTTED

### 2315

2315-X-01-XX-00-00-07-0

Swage mount in .067 hole

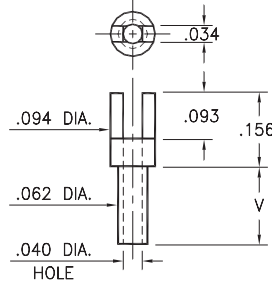


Basic Part Number	Board Thickness	Length V	Depth D
2315-1	.031	.045	.040
2315-2	.062	.094	.062
2315-3	.094	.125	.062
2315-4	.125	.156	.062

### 2302

2302-X-01-XX-00-00-07-0

Swage mount in .067 hole

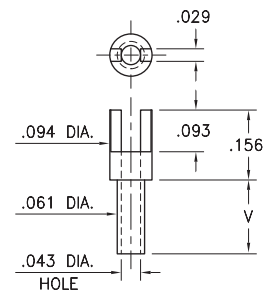


Basic Part Number	Board Thickness	Length V
2302-1	.031	.053
2302-2	.062	.084
2302-3	.094	.115
2302-4	.125	.147

### 2352

2352-X-01-XX-00-00-07-0

Swage mount in .067 hole

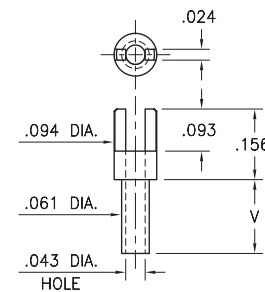


Basic Part Number	Board Thickness	Length V
2352-1	.031	.045
2352-2	.062	.094
2352-3	.094	.125
2352-4	.125	.156

### 2362

2362-X-01-XX-00-00-07-0

Swage mount in .067 hole

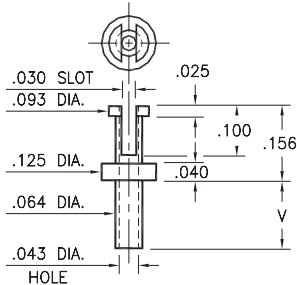


Basic Part Number	Board Thickness	Length V
2362-5	.016	.037
2362-1	.031	.053
2362-2	.062	.084
2362-3	.094	.115
2362-4	.125	.147

### 2507

2507-X-01-XX-00-00-07-0

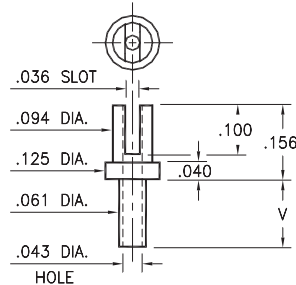
Swage mount in .067 hole



### 2526

2526-X-01-XX-00-00-07-0

Swage mount in .064 hole



Basic Part Number	Board Thickness	Length V
25XX-1	.031	.053
25XX-2	.062	.084
25XX-3	.094	.115
25XX-4	.125	.147

#### SPECIFICATIONS:

**Pin Material:** Brass Alloy 360, 1/2 Hard  
(Swage pins are annealed)

**Dimensions:** Inches

**Tolerances On:** Lengths: ±.005  
Diameters: ±.002  
Angles: ± 2°



ORDER CODE: XXXX - X - 01 - XX - 00 - 00 - 07 - 0

BASIC PART #

SPECIFY PIN FINISH:

- 01 200 μ" TIN/LEAD OVER NICKEL
- ◆ 80 200 μ" TIN OVER NICKEL (RoHS)
- ◆ 44 300 μ" SILVER OVER COPPER (RoHS)
- 50 300 μ" ELECTRO-SOLDER (60/40 SnPb)

