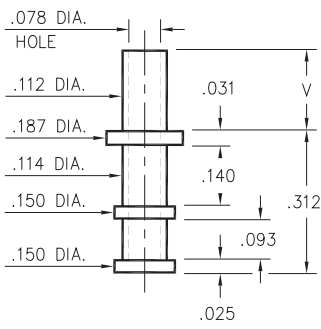
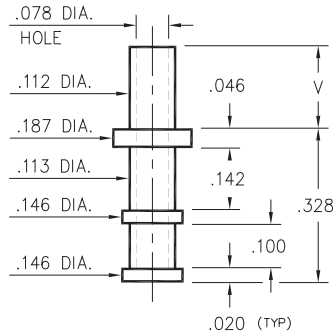


2802/2804



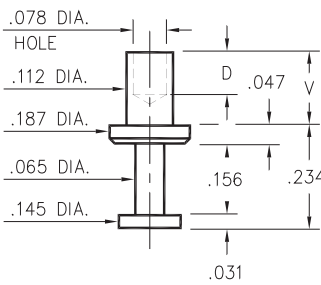
2802-X-00-XX-00-00-07-0
Swage mount in .118 hole



2804-X-00-XX-00-00-07-0
Swage mount in .118 hole

- X -	Board Thickness	Length V
1	.031	.078
2	.062	.109
3	.094	.140
4	.125	.171

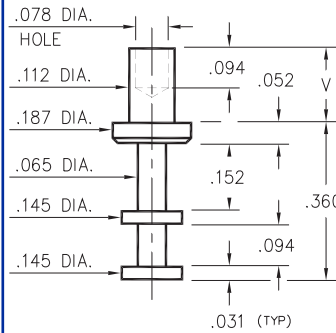
2805



2805-X-00-XX-00-00-07-0
Swage mount in .116 hole

- X -	Board Thickness	Length V	Depth D
1	.031	.074	.068
2	.062	.105	.098
3	.094	.135	
4	.125	.165	

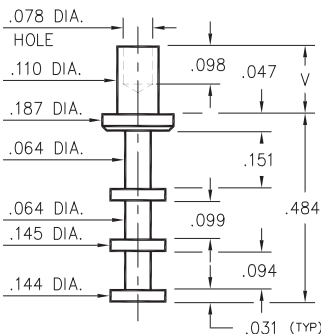
2801



2801-X-00-XX-00-00-07-0
Swage mount in .116 hole

- X -	Board Thickness	Length V
1	.031	.078
2	.062	.109
3	.094	.141
4	.125	.172
5	.188	.234

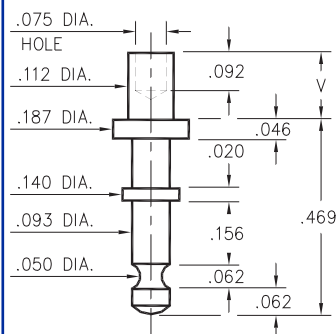
2806



2806-X-00-XX-00-00-07-0
Swage mount in .116 hole

- X -	Board Thickness	Length V
1	.031	.078
2	.062	.109
3	.094	.141
4	.125	.172

2811



2811-X-00-XX-00-00-07-0
Swage mount in .116 hole

- X -	Board Thickness	Length V
1	.031	.075
2	.062	.105
3	.094	.135
4	.125	.165

SPECIFICATIONS

PIN MATERIAL:
Brass Alloy 360, 1/2 Hard
Swage pins are annealed

DIMENSION IN INCHES
TOLERANCES ON:
LENGTHS: ±.005
DIAMETERS: ±.002
ANGLES: ± 2°

ORDER CODE: XXXX - X - 00 - XX - 00 - 00 - 07 - 0

BASIC PART #

SPECIFY PIN FINISH:

- 01 200µ" TIN/LEAD OVER NICKEL
- ◇ 80 200µ" TIN OVER NICKEL (RoHS)
- ◇ 44 300µ" SILVER OVER COPPER (RoHS)
- ◇ 50 300µ" ELECTRO-SOLDER (RoHS) (60/40 SnPb)

