

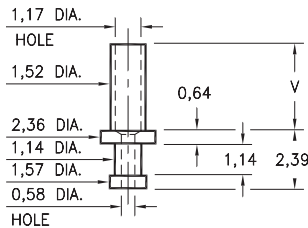
MALE PCB PINS

SOLDER TERMINAL TURRETS

2312

2312-X-00-XX-00-00-07-0

Swage mount in 1,63 hole

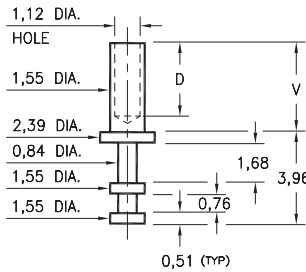


Basic Part Number	Board Thickness	Length V
2312-1	0,79	1,35
2312-2	1,57	2,39
2312-3	2,39	2,92
2312-4	3,18	3,73

2308

2308-X-00-XX-00-00-07-0

Swage mount in 1,63 hole

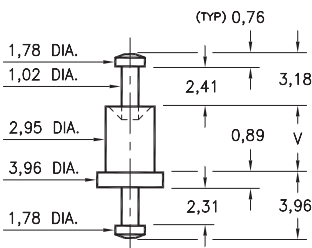


Basic Part Number	Board Thickness	Length V	Depth D
2308-1	0,79	1,37	0,91
2308-2	1,57	2,13	1,68
2308-3	2,39	2,92	2,44
2308-4	3,18	3,73	3,20

2707

2707-X-00-XX-00-00-07-0

Swage mount in 3,05 hole

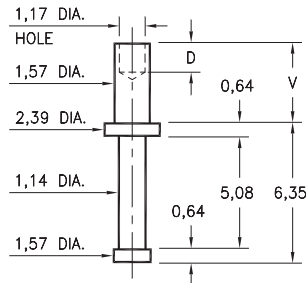


Basic Part Number	Board Thickness	Length V
2707-1	0,79	1,57
2707-2	1,57	2,39
2707-3	2,39	3,18
2707-4	3,18	3,96

2329

2329-X-00-XX-00-00-07-0

Swage mount in 1,70 hole

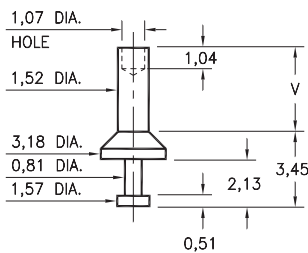


Basic Part Number	Board Thickness	Length V	Depth D
2329-1	0,79	1,14	1,14
2329-2	1,57	2,39	1,57
2329-3	2,39	3,18	1,57
2329-4	3,18	3,96	1,57

2510

2510-X-00-XX-00-00-07-0

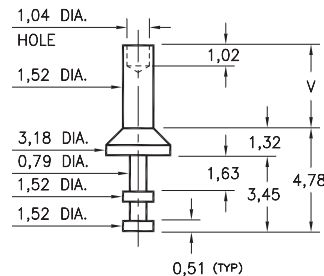
Swage mount in 1,63 hole



2513

2513-X-00-XX-00-00-07-0

Swage mount in 1,63 hole



Basic Part Number	Board Thickness	Length V
251X-1	0,79	1,57
251X-2	1,57	2,39
251X-3	2,39	3,18
251X-4	3,18	3,96

SPECIFICATIONS:

Pin Material: Brass Alloy 360, 1/2 Hard
(Swage pins are annealed)

Dimensions: Millimeters

Tolerances On: Lengths: $\pm 0,13$
Diameters: $\pm 0,051$
Angles: $\pm 2^\circ$



ORDER CODE: XXXX - X - 00 - XX - 00 - 00 - 07 - 0

BASIC PART #

SPECIFY PIN FINISH:

- 01 5,08 μ m TIN/LEAD OVER NICKEL
- ◆ 80 5,08 μ m TIN OVER NICKEL (RoHS)
- ◆ 44 7,62 μ m SILVER OVER COPPER (RoHS)
- 50 7,62 μ m ELECTRO-SOLDER
(60/40 SnPb)



Mouser Electronics

Authorized Distributor

Click to View Pricing, Inventory, Delivery & Lifecycle Information:

[Mill-Max:](#)

[2308-1-00-50-00-00-07-0](#) [2308-2-00-80-00-00-07-0](#) [2308-2-00-44-00-00-07-0](#)