

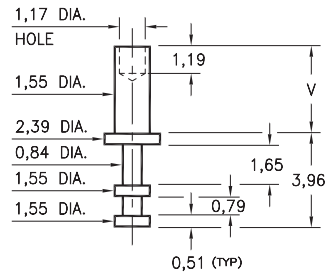
# MALE PCB PINS

## SOLDER TERMINAL TURRETS

### 2348

2348-X-00-XX-00-00-07-0

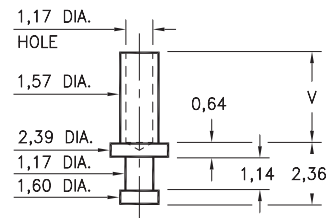
Swage mount in 1,63 hole



### 2301

2301-X-00-XX-00-00-07-0

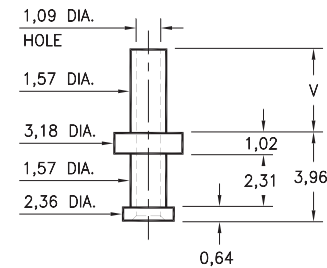
Swage mount in 1,70 hole



### 2506

2506-X-00-XX-00-00-07-0

Swage mount in 1,70 hole

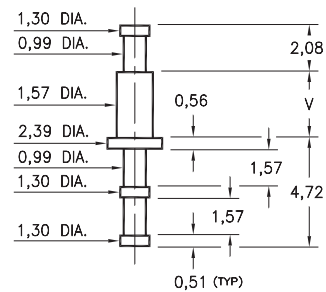


Basic Part Number	Board Thickness	Length V
2XXX-1	0,79	1,35
2XXX-2	1,57	2,13
2XXX-3	2,39	2,92
2XXX-4	3,18	3,73

### 2310

2310-X-00-XX-00-00-07-0

Swage mount in 1,70 hole

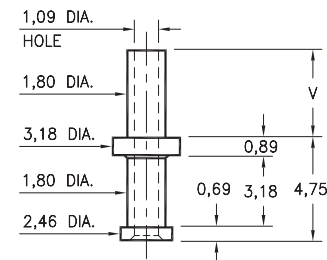


Basic Part Number	Board Thickness	Length V
2310-1	0,79	1,35
2310-2	1,57	2,08
2310-3	2,39	2,87
2310-4	3,18	3,68

### 2505

2505-X-00-XX-00-00-07-0

Swage mount in 1,93 hole

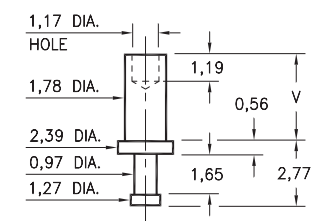


Basic Part Number	Board Thickness	Length V
2505-1	0,79	1,57
2505-2	1,57	2,36
2505-3	2,39	3,18
2505-4	3,18	3,96

### 2325

2325-X-00-XX-00-00-07-0

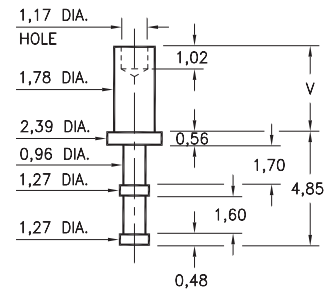
Swage mount in 1,85 hole



### 2355

2355-X-00-XX-00-00-07-0

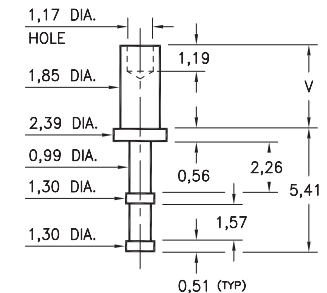
Swage mount in 1,85 hole



### 2365

2365-X-00-XX-00-00-07-0

Swage mount in 1,93 hole



Basic Part Number	Board Thickness	Length V
23X5-1	0,79	1,35
23X5-2	1,57	2,13
23X5-3	2,39	2,92
23X5-4	3,18	3,73

#### SPECIFICATIONS:

**Pin Material:** Brass Alloy 360, 1/2 Hard  
(Swage pins are annealed)

**Dimensions:** Millimeters

**Tolerances On:** Lengths:  $\pm 0,13$   
Diameters:  $\pm 0,051$   
Angles:  $\pm 2^\circ$



ORDER CODE: XXXX - X - 00 - XX - 00 - 00 - 07 - 0

BASIC PART #

SPECIFY PIN FINISH:

- 01 5,08µm TIN/LEAD OVER NICKEL
- ◆ 80 5,08µm TIN OVER NICKEL (RoHS)
- ◆ 44 7,62µm SILVER OVER COPPER (RoHS)
- 50 7,62µm ELECTRO-SOLDER  
(60/40 SnPb)



# Mouser Electronics

Authorized Distributor

Click to View Pricing, Inventory, Delivery & Lifecycle Information:

[Mill-Max:](#)

[2355-3-00-50-00-00-07-0](#) [2348-2-00-50-00-00-07-0](#) [2506-3-00-80-00-00-07-0](#) [2506-2-00-80-00-00-07-0](#) [2301-2-00-44-00-00-07-0](#) [2355-2-00-44-00-00-07-0](#) [2506-2-00-44-00-00-07-0](#) [2506-3-00-44-00-00-07-0](#)