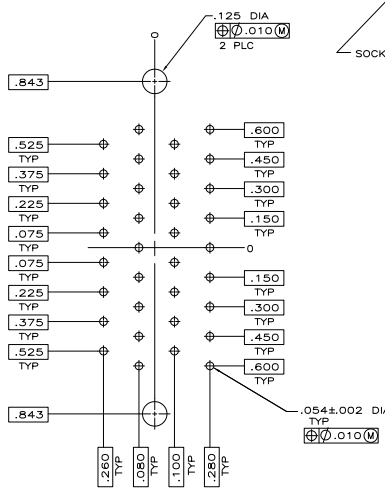
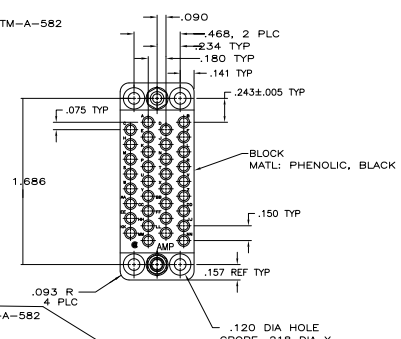
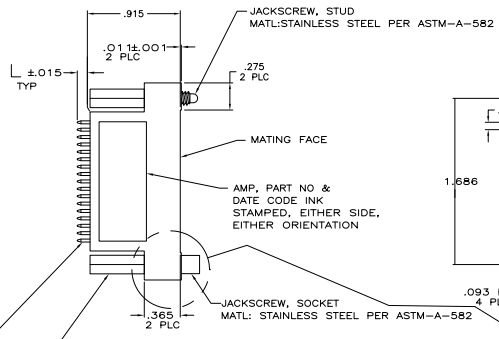
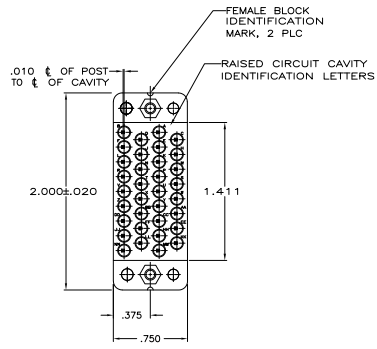


REV	DATE	DESCRIPTION	BY	CHKD
0				
N	4/13/05	REVISED PER 0238-0127-05	SS	GS
NT	07/20/10	REVISED PER ECO-09-021826	JK	AEC



RECOMMENDED PC BOARD LAYOUT  
 SCALE 4:1

- △ CONTACTS LOADED AT POSITIONS B,C,D,E,F,P,R,S,T,V,X,Y, AND AA ONLY.
- △ CONTACTS LOADED AT POSITIONS A,B,C,D,E,F,H,J,K,L,M,N,P,R,S,T,U,V,W,X,Y,Z,AA,BB,NN ONLY.
- △ SUPERSEDED BY 213524-2
- △ BODY-MATL: BRASS PER MIL-C-50.  
 FINISH: PLATED WITH .000030 MIN GOLD PER MIL-G-45204 FOR A LENGTH OF .200 MIN FROM MATING END OF CONTACT, .000100 MIN TIN-LEAD PER MIL-T-10727 IN WIRE BARREL AREA, BOTH OVER .000050 MIN NICKEL PER QQ-N-290.  
 SPRING-MATL: STAINLESS STEEL PER QQ-S-766.  
 POST-MATL: BRASS PER ASTM-B-134.  
 FINISH: .000100 MIN MATTE TIN-LEAD PER MIL-T-10727 OVER .000050 MIN NICKEL PER QQ-N-290.
- △ BODY-MATL: BRASS PER MIL-C-50.  
 FINISH: PLATED WITH .000030 MIN GOLD PER MIL-G-45204 FOR A LENGTH OF .200 MIN FROM MATING END OF CONTACT, .000100 MIN TIN PER MIL-T-10727 IN WIRE BARREL AREA, BOTH OVER .000050 MIN NICKEL PER QQ-N-290.  
 SPRING-MATL: STAINLESS STEEL PER QQ-S-766.  
 POST-MATL: BRASS PER ASTM-B-134.  
 FINISH: .000100 MIN MATTE TIN PER MIL-T-10727 OVER .000050 MIN NICKEL PER QQ-N-290.
- △ OBSOLETE PARTS: OBSOLETE CIS STREAMLINING PER D.RENAUD/D.SINISI
- △ OBSOLETE

NUT, 2 PLC  
 MATERIAL: CARBON STEEL PER QQ-S-637  
 FINISH: ZINC PER ASTM-B-633  
 SEE TABLE  
 LOCKWASHER, 2 PLC  
 MATERIAL: STAINLESS STEEL PER QQ-S-766  
 FINISH: PASSIVATED  
 SEE TABLE  
 213524-2 ONLY

CONTACT FINISH	SPACERS	NUTS AND LOCKWASHERS	LOCKWASHERS	CONTACT LOADING	PART NO
△	.200	△	△	ALL LOADED	213524-2
△	.165	△	△	ALL LOADED	213524-1
△	.130	△	△	ALL LOADED	213524-0
△	.130	△	△	ALL LOADED	213524-9
△	.130	△	△	ALL LOADED	213524-8
△	.200	△	△	ALL LOADED	213524-7
△	.165	△	△	ALL LOADED	213524-6
△	.130	△	△	ALL LOADED	213524-5
△	.130	△	△	ALL LOADED	213524-4
△	.130	△	△	ALL LOADED	213524-3
△	.130	△	△	ALL LOADED	213524-2
△	.130	△	△	ALL LOADED	213524-1

THIS DRAWING IS A CONTROLLED DOCUMENT. CHECKED BY: [Signature] DATE: 5/28/05  
 DESIGNED BY: [Signature] DATE: 5/28/05  
 DRAWN BY: [Signature] DATE: 5/28/05  
 CUSTOMER DRAWING: A100779 Q=213524  
 YTS Electronics Corporation  
 Harrisburg, Pa 17105-3608  
 CONNECTOR ASSEMBLY, SOCKET,  
 34 POSITION, M SERIES  
 SIZE: 2:1 SHEET 1 OF 1