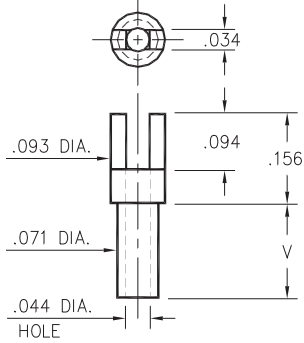


## 2314

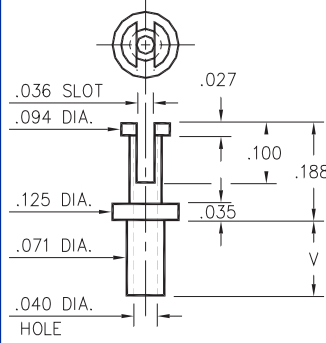


- X -	Board Thickness	Length V
1	.031	.045
2	.062	.094
3	.094	.125
4	.125	.156

**2314-X-01-XX-00-00-07-0**

Swage mount in .076 hole

## 2511

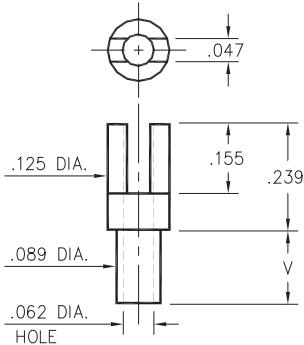


- X -	Board Thickness	Length V
1	.031	.063
2	.062	.094
3	.094	.125
4	.125	.156

**2511-X-01-XX-00-00-07-0**

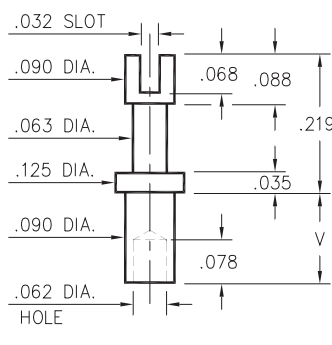
Swage mount in .076 hole

## 2515/2516



**2515-X-01-XX-00-00-07-0**

Swage mount in .094 hole

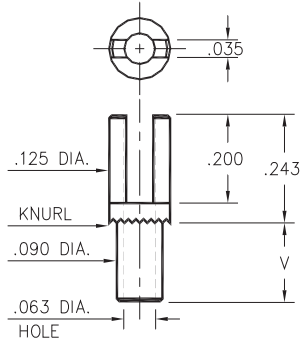


**2516-X-01-XX-00-00-07-0**

Swage mount in .094 hole

- X -	Board Thickness	Length V
1	.031	.075
2	.062	.105
3	.094	.135
4	.125	.147

## 2502



**2502-X-01-XX-00-00-07-0**

Swage mount in .094 hole

- X -	Board Thickness	Length V
1	.031	.080
2	.062	.111
3	.094	.143
4	.125	.174

### SPECIFICATIONS

**PIN MATERIAL:**  
Brass Alloy 360, 1/2 Hard  
Swage pins are annealed

**DIMENSION IN INCHES**  
**TOLERANCES ON:**  
LENGTHS: ±.005  
DIAMETERS: ±.002  
ANGLES: ± 2°

**ORDER CODE: XXXX - X - 01 - XX - 00 - 00 - 07 - 0**

**BASIC PART #**

**SPECIFY PIN FINISH:**

- 01 200μ" TIN/LEAD OVER NICKEL
- ◇ 80 200μ" TIN OVER NICKEL (RoHS)
- ◇ 44 300μ" SILVER OVER COPPER (RoHS)
- ◇ 50 300μ" ELECTRO-SOLDER (RoHS) (60/40 SnPb)

