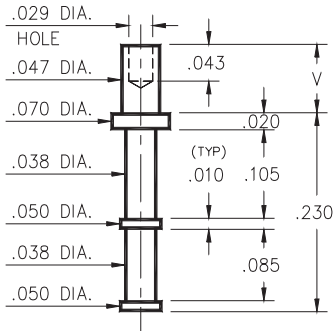


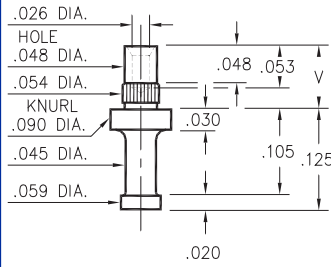
2110



2110-X-00-XX-00-00-07-0
Swage mount in .052 hole

- X -	Board Thickness	Length V
1	.031	.049
2	.062	.082

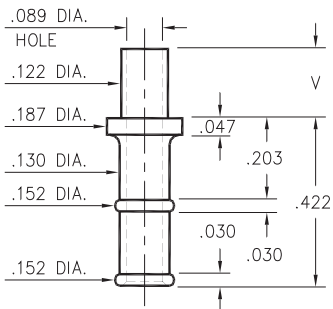
2333



2333-X-00-XX-00-00-07-0
Press-fit and swage in .052 mounting hole

- X -	Board Thickness	Length V
1	.078	.103
2	.062	.087
3	.047	.072

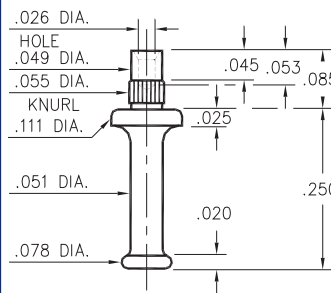
2821



2821-X-00-XX-00-00-07-0
Swage mount in .125 hole

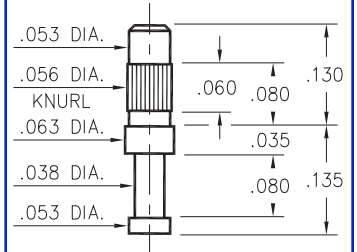
- X -	Board Thickness	Length V
2	.062	.109
3	.094	.141
4	.125	.172

2533



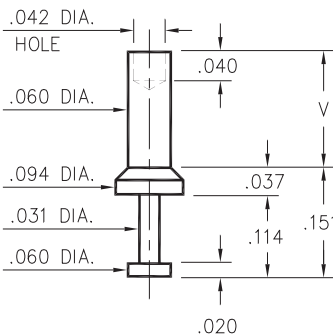
2533-0-00-XX-00-00-07-0
Press-fit & swage in .052 mtg. hole. For .062 thick board

2101

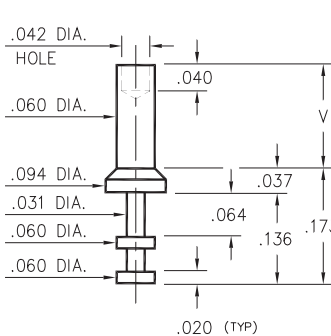


2101-3-00-XX-00-00-07-0
Press-fit in .053 mtg. hole. For .062 to .094 thick board

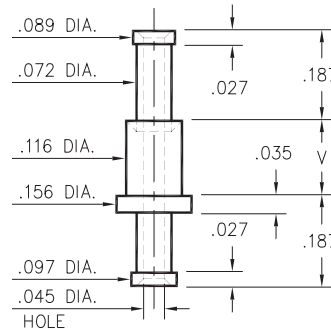
2316/2317/2708



2316-X-00-XX-00-00-07-0
Swage mount in .064 hole



2317-X-00-XX-00-00-07-0
Swage mount in .064 hole



2708-X-00-XX-00-00-07-0
Swage mount in .120 hole

- X -	Board Thickness	Length V
1	.031	.062
2	.062	.094
3	.094	.125
4	.125	.156

SPECIFICATIONS

PIN MATERIAL:
Brass Alloy 360, 1/2 Hard
Swage pins are annealed

DIMENSION IN INCHES
TOLERANCES ON:
LENGTHS: ±.005
DIAMETERS: ±.002
ANGLES: ± 2°

ORDER CODE: XXXX - X - 00 - XX - 00 - 00 - 07 - 0

BASIC PART #

SPECIFY PIN FINISH:

- 01 200µ" TIN/LEAD OVER NICKEL
- ◇ 80 200µ" TIN OVER NICKEL (RoHS)
- ◇ 44 300µ" SILVER OVER COPPER (RoHS)
- ◇ 50 300µ" ELECTRO-SOLDER (RoHS) (60/40 SnPb)

