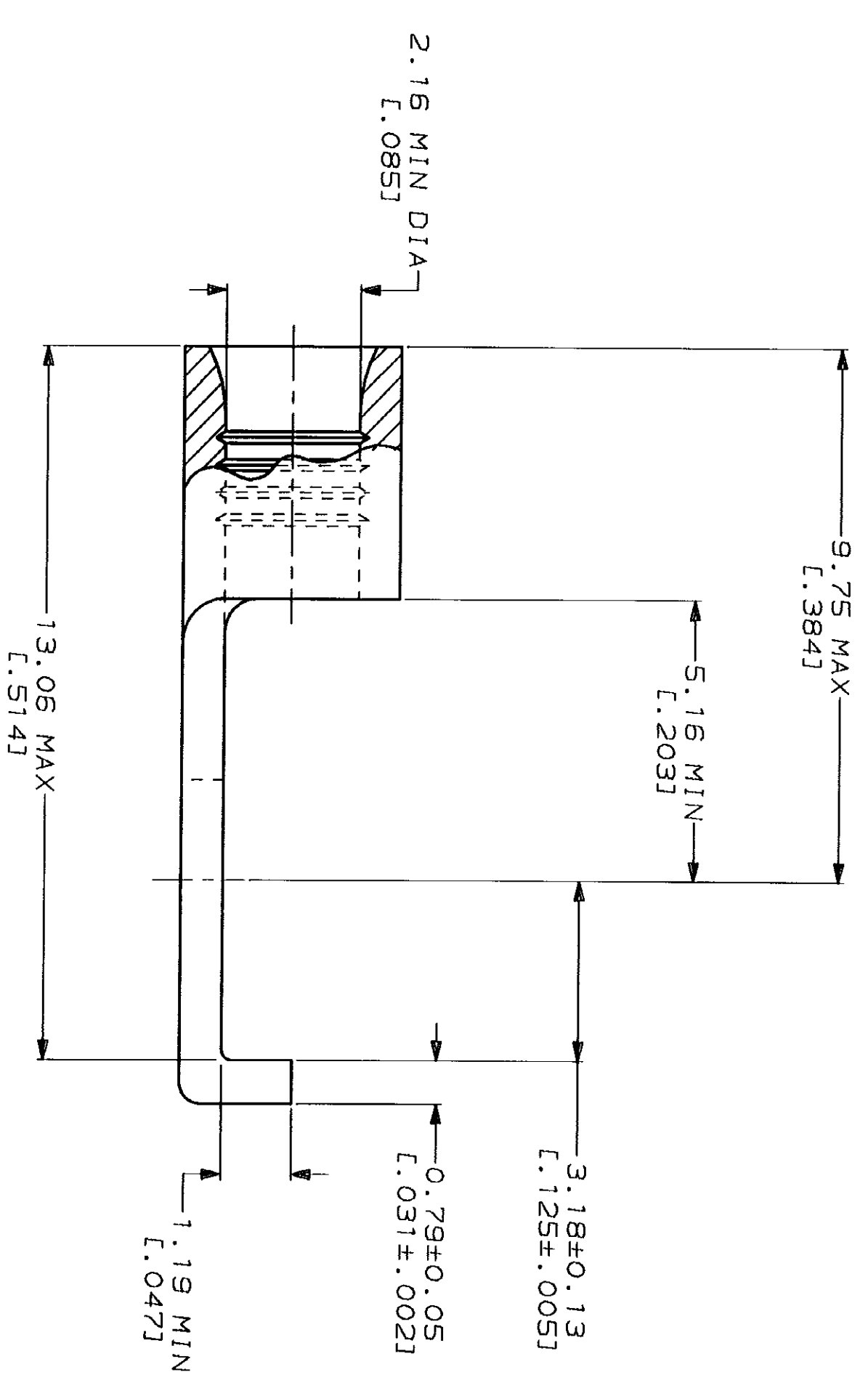


METPRIG
 DIMENSIONS LISTED IN mm [INCHES]

| | |
|--|---|
| AMP WIRE RANGE 16-14 AWG SOLID OR STRANDED | UL E13288 Listed 16-14 AWG SOLID OR STRANDED |
| LR7189 Certified 16-14 AWG SOLID OR STRANDED | MILITARY P/N AND CLASS NOT APPLICABLE |

△ STAMP AMP 16-14* APPROX AS SHOWN



| | | |
|------|------------------|------------|
| 100 | LOOSE PIECE, BOX | 8-320855-1 |
| 5000 | ON TAPE | 2-320855-1 |
| --- | LOOSE PIECE | 320855 |
| | PACKAGING TYPE | PART NO |

AMP INCORPORATED
CUSTOMER SERVICE SYSTEMS

FOR ADDITIONAL
 COPIES OF DRAWINGS
 AND TECHNICAL DOCUMENTS
 PRODUCT INFORMATION CENTER
 1-800-522-6752

FOR APPLICATION
 TOOLING INFORMATION
 TOOLING ASSISTANCE CENTER
 1-800-722-1111

FOR ORDER ENTRY
 1-800-526-5142

MAX RECOMMENDED OPERATING
 TEMPERATURE:
 170°C MAX

VOLTAGE RATING:
 NOT APPLICABLE

WIRE CROSS SECTIONAL AREA RANGE:
 1.04-2.62mm² [2,050-5,180] CIR MILS
 SOLID OR STRANDED

DO NOT SCALE PRINT.
 UNLESS SPECIFIED
 DIMENSIONS IN mm [INCHES]
 TOLERANCES ON:
 2 PLC DEC # -
 3 PLC DEC # -
 ANGLES ± -
 MATERIAL
 COPPER PER
 ASTM B-152
 ANNEALED

FINISH
 TIN PLATE
 0.00254 [L.000100] MIN
 THK PER MIL-T-10727

DR 4-8-93
 TA BRINKMAN
 CHK 4-8-93
 DA PATTERSON
 APPD 4-8-93
 DE MILLER
 APPD 4-8-93
 JL MECKLEY
 PRODUCT SPEC

APPLICATION SPEC
 WEIGHT

AMP
 AMP Incorporated
 Harrisburg, PA 17105-3608

TERMINAL, FLANGED
 SPADE, SOLISTRAND™

SIZE
 CAGE CODE
 DRAWING NO
 SCALE 10:1
 SHEET

Mouser Electronics

Authorized Distributor

Click to View Pricing, Inventory, Delivery & Lifecycle Information:

[TE Connectivity:](#)

[2-320855-1](#)