

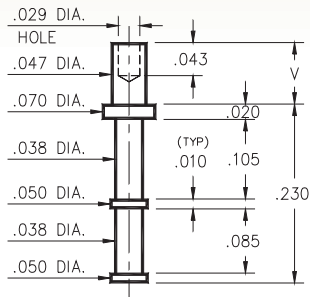
MALE PCB PINS

SOLDER TERMINAL TURRETS

2110

2110-X-00-XX-00-00-07-0

Swage mount in .052 hole

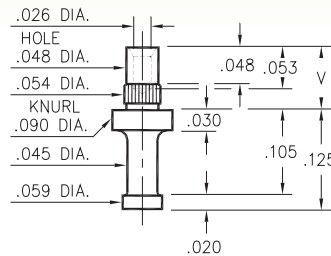


Basic Part Number	Board Thickness	Length V
2110-1	.031	.049
2110-2	.062	.082

2333

2333-X-00-XX-00-00-07-0

Press-fit & swage in .052 mounting hole

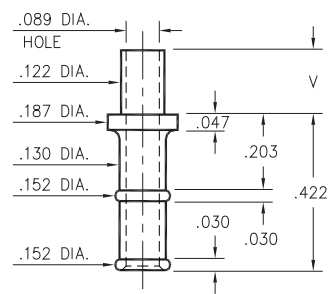


Basic Part Number	Board Thickness	Length V
2333-1	.078	.103
2333-2	.062	.087
2333-3	.047	.072

2821

2821-X-00-XX-00-00-07-0

Swage mount in .125 hole

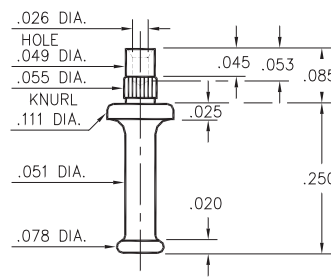


Basic Part Number	Board Thickness	Length V
2821-2	.062	.109
2821-3	.094	.141
2821-4	.125	.172

2533

2533-0-00-XX-00-00-07-0

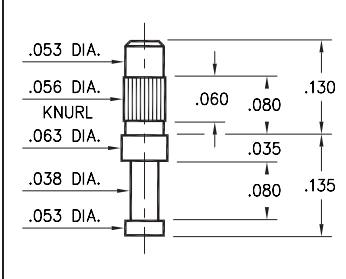
Press-fit & swage in .052 mounting hole
For a .062 thick board



2101

2101-3-00-XX-00-00-07-0

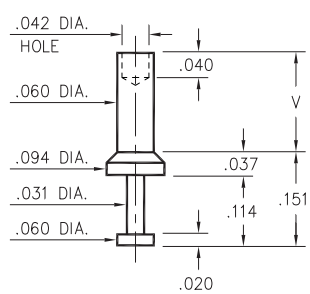
Press-fit in .053 mounting hole
For a .062 to .094 thick board



2316

2316-X-00-XX-00-00-07-0

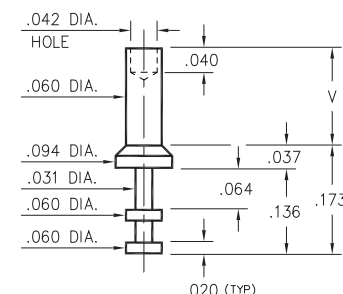
Swage mount in .064 hole



2317

2317-X-00-XX-00-00-07-0

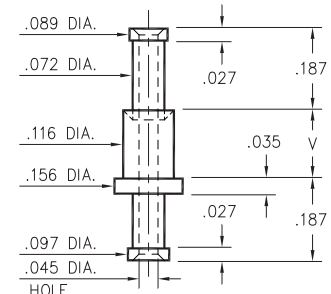
Swage mount in .064 hole



2708

2708-X-00-XX-00-00-07-0

Swage mount in .120 hole



Basic Part Number	Board Thickness	Length V
2XXX-1	.031	.062
2XXX-2	.062	.094
2XXX-3	.094	.125
2XXX-4	.125	.156

SPECIFICATIONS:

Pin Material: Brass Alloy 360, 1/2 Hard
(Swage pins are annealed)

Dimensions: Inches

Tolerances On: Lengths: ±.005
Diameters: ±.002
Angles: ± 2°



ORDER CODE: XXXX - X - 00 - XX - 00 - 00 - 07 - 0

BASIC PART #

SPECIFY PIN FINISH:

- 01 200 μ" TIN/LEAD OVER NICKEL
- ◆ 80 200 μ" TIN OVER NICKEL (RoHS)
- ◆ 44 300 μ" SILVER OVER COPPER (RoHS)
- 50 300 μ" ELECTRO-SOLDER (60/40 SnPb)

