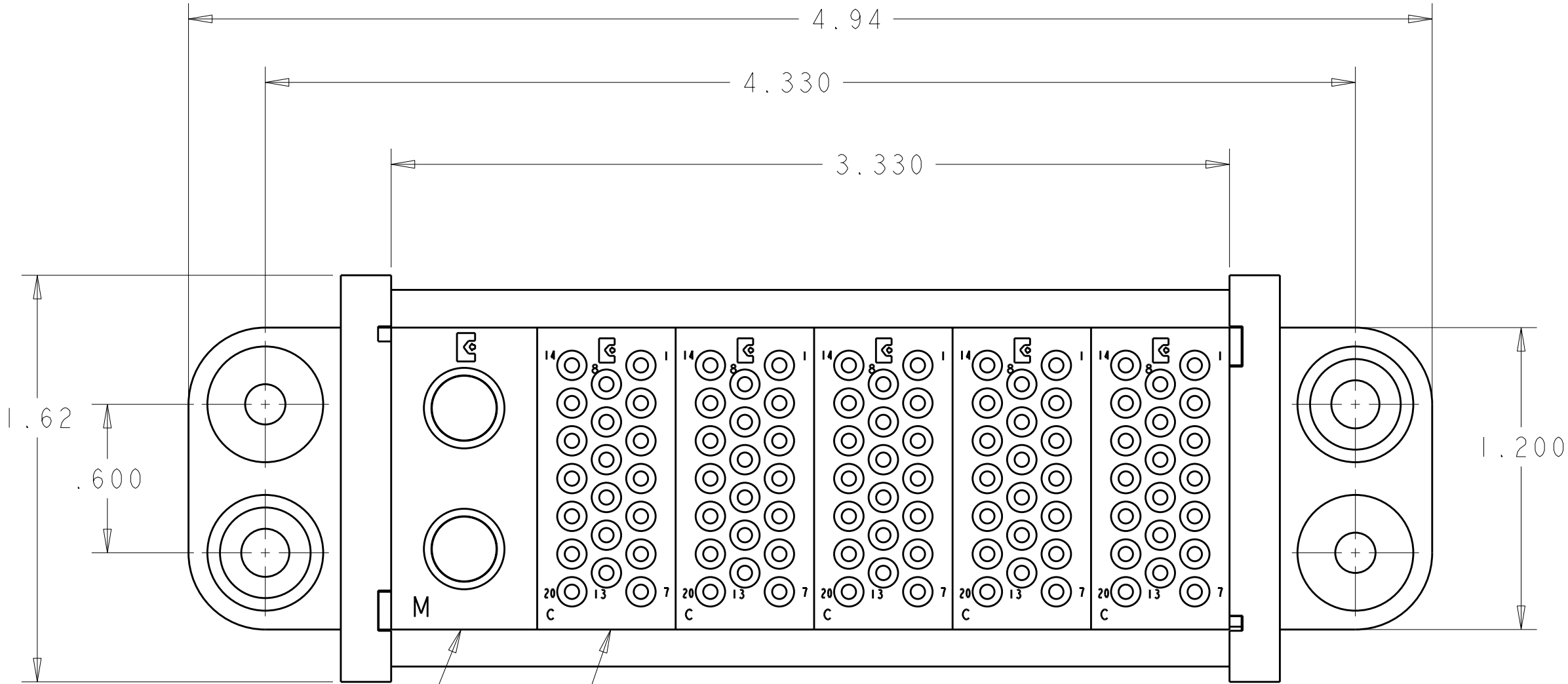


LOC	DIST	REVISIONS				
GP	00	P	LTR	DESCRIPTION	DATE	DWN APVD
			A	RELEASED	02FEB2010	RG DO



1. PART NUMBER CHANGES AND/OR DESIGN CHANGES AFFECTING
ITEM INTERCHANGEABILITY REQUIRE PRIOR TYCO ELECTRONICS
APPROVAL AND AUTHORIZATION BY REVISION TO THIS DRAWING.

2. ITEMS PROVIDED TO THIS SPECIFICATION TO BE PERMANENTLY
IDENTIFIED PER THE FLOWING IDENTIFIER:

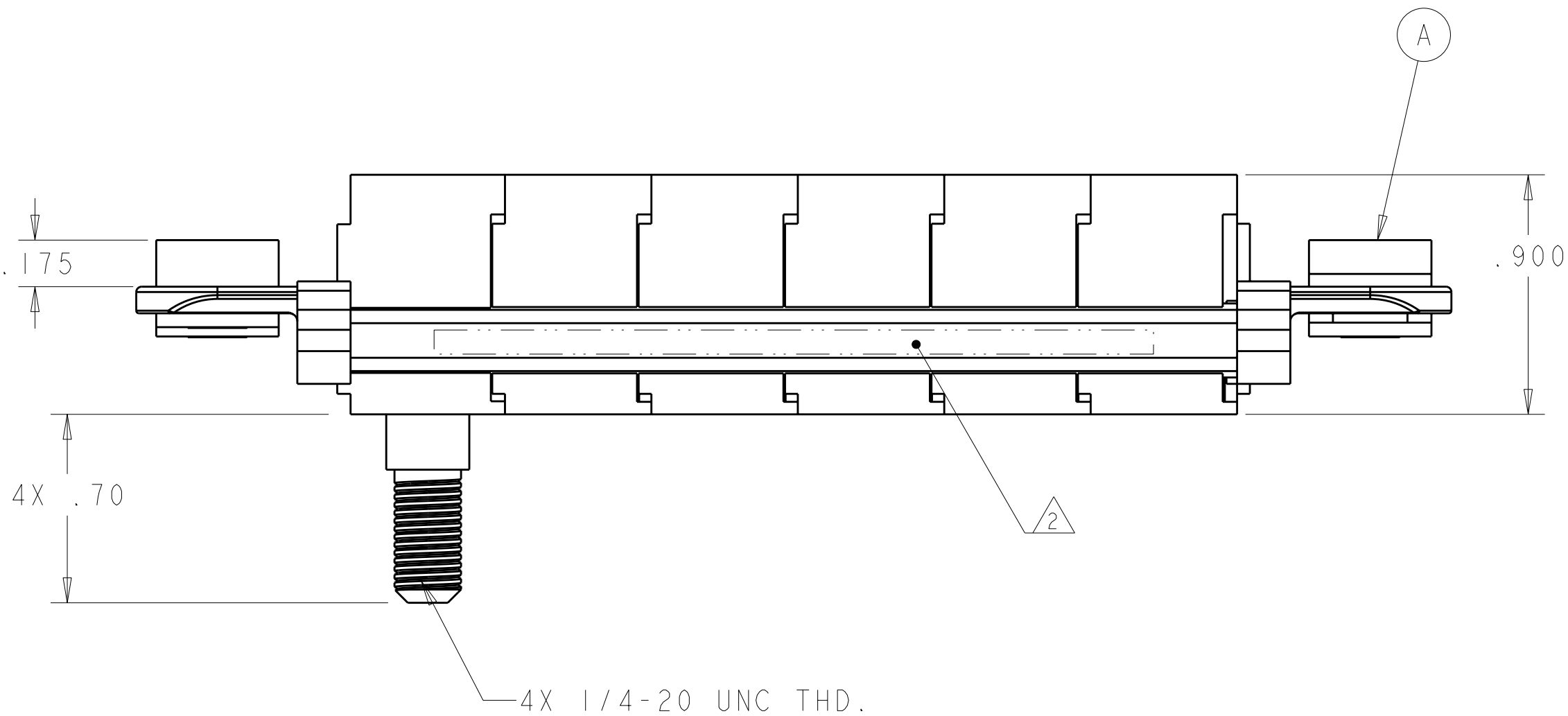
TYCO ELECTRONICS P/N
XXXXXXX-X

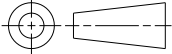
DATE CODE (e.g. 0212)
XXXX

YEAR 1 WEEK 1

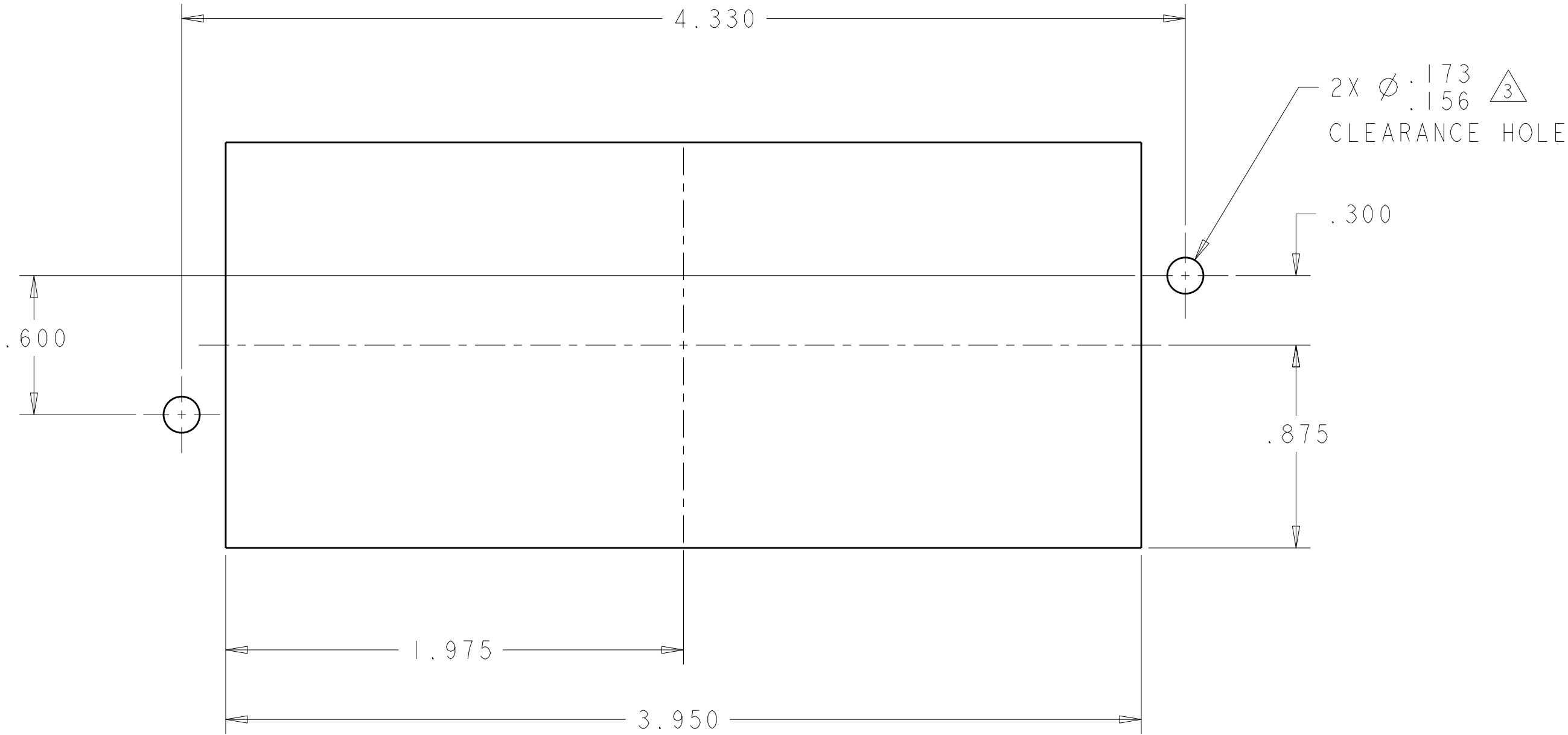
3. MOUNTING FLANGE BUSHING ACCEPTS 6/32 SCREW (Ø.156 CLEARANCE
HOLE, FLOAT MOUNT) OR 8/32 SCREWS (Ø.173 CLEARANCE HOLE
FIXED MOUNT) USER SUPPLIED.

4. MODULE "M" SOCKET IS INSTALLED

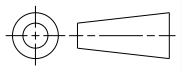


1	6648454-1	MODULE "M"	C
5	1648468-1	MODULE "C"	B
2	6648263-1	END CAP, FIXED MOUNT	A
-1	PART NUMBER	DESCRIPTION	ITEM NO.
THIS DRAWING IS A CONTROLLED DOCUMENT FOR TYCO ELECTRONICS CORPORATION IT IS SUBJECT TO CHANGE AND THE CONTROLLING ENGINEERING ORGANIZATION SHOULD BE CONTACTED FOR THE LATEST REVISION.			
DIMENSIONS: INCHES		DWN 29 JAN 2010 R. GRZYBOWSKI	
		CHK 29 JAN 2010 D. ORRIS	
		APVD 29 JAN 2010 M. PERCHERKE	
		NAME	
MATERIAL		PRODUCT SPEC	
		APPLICATION SPEC	
- -		- -	
		SIZE CAGE CODE DRAWING NO RESTRICTED TO	
-		A200779 C=2085360	
		CUSTOMER DRAWING SCALE 2:1 SHEET 1 OF 2 REV A	

LOC	DIST	REVISIONS					
GP	00	P	LTR	DESCRIPTION	DATE	DWN	APVD
			-	SEE SHEET 1	-	-	-



PANEL CUT-OUT
COMPONENT SIDE

THIS DRAWING IS A CONTROLLED DOCUMENT FOR TYCO ELECTRONICS CORPORATION IT IS SUBJECT TO CHANGE AND THE CONTROLLING ENGINEERING ORGANIZATION SHOULD BE CONTACTED FOR THE LATEST REVISION.		DWN R. GRZYBOWSKI 29 JAN 2010	Tyco Electronics Harrisburg, PA 17105-3608	
DIMENSIONS: INCHES		CHK D. ORRIS 29 JAN 2010	NAME	
		APVD M. PERCHERKE 29 JAN 2010	PRODUCT SPEC	
		APPLICATION SPEC		
MATERIAL		WEIGHT	RESTRICTED TO	
-		-	-	
-		CUSTOMER DRAWING		SCALE 2:1
		SHEET 2 OF 2		REV A

Mouser Electronics

Authorized Distributor

Click to View Pricing, Inventory, Delivery & Lifecycle Information:

[TE Connectivity:](#)

[2085360-1](#)