

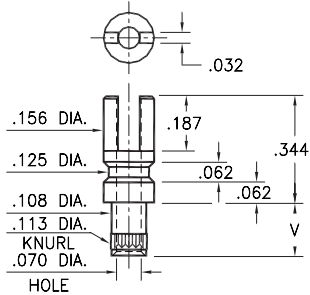
# MALE PCB PINS

## SOLDER TERMINALS SLOTTED

### 2715

2715-X-01-XX-00-00-07-0

Swage mount in .116 hole

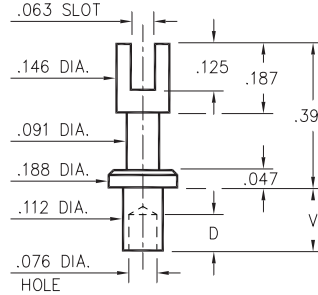


Basic Part Number	Board Thickness	Length V
2715-2	.062	.109
2715-3	.094	.141
2715-4	.125	.172

### 2809

2809-X-01-XX-00-00-07-0

Swage mount in .116 hole

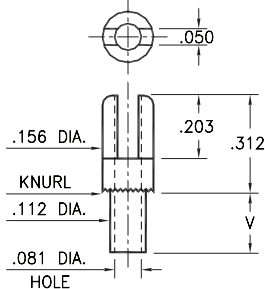


Basic Part Number	Board Thickness	Length V	Depth D
2809-1	.031	.078	.068
2809-2	.062	.109	.098
2809-3	.094	.141	.098
2809-4	.125	.172	.098

### 2701

2701-X-01-XX-00-00-07-0

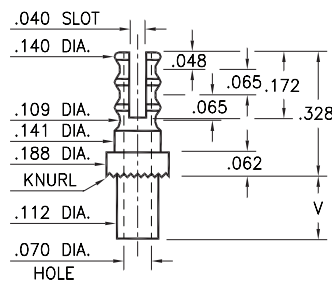
Swage mount in .116 hole



### 2808

2808-X-01-XX-00-00-07-0

Swage mount in .116 hole

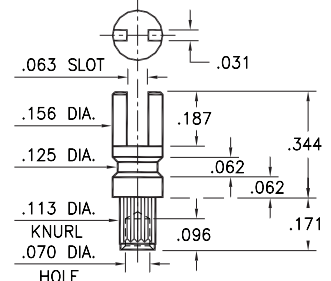


Basic Part Number	Board Thickness	Length V
2XXX-1	.031	.075
2XXX-2	.062	.105
2XXX-3	.094	.135
2XXX-4	.125	.165

### 2762

2762-4-01-XX-00-00-07-0

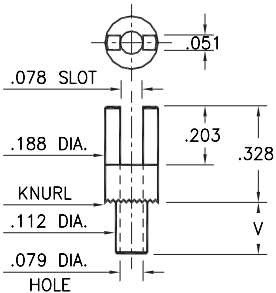
Swage mount in .116 hole  
For a .125 thick board



### 2807

2807-X-01-XX-00-00-07-0

Swage mount in .116 hole

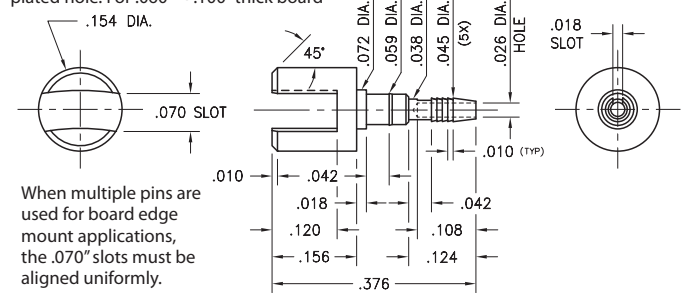


Basic Part Number	Board Thickness	Length V
2807-1	.031	.078
2807-2	.062	.109
2807-3	.094	.140
2807-4	.125	.171

### 3622

3622-0-32-15-00-00-03-0

Slotted compliant tail press-fit in .040 ± .003 plated hole. For .060" → .100" thick board



When multiple pins are used for board edge mount applications, the .070" slots must be aligned uniformly.

#### SPECIFICATIONS:

**Pin Material:** Brass Alloy 360, 1/2 Hard  
(Swage pins are annealed)

**Dimensions:** Inches

**Tolerances On:** Lengths: ± .005  
Diameters: ± .002  
Angles: ± 2°



ORDER CODE: **XXXX - X - XX - XX - 00 - 00 - 07 - 0**

BASIC PART #

SPECIFY PIN FINISH:

Part #3622 plating ONLY

- 01 200 μ" TIN/LEAD OVER NICKEL
- 15 10 μ" GOLD OVER NICKEL (RoHS)
- 80 200 μ" TIN OVER NICKEL (RoHS)
- 44 300 μ" SILVER OVER COPPER (RoHS)
- 50 300 μ" ELECTRO-SOLDER (60/40 SnPb)



# Mouser Electronics

Authorized Distributor

Click to View Pricing, Inventory, Delivery & Lifecycle Information:

## Mill-Max:

[2809-4-01-01-00-00-07-0](#) [2809-4-01-50-00-00-07-0](#) [2809-3-01-01-00-00-07-0](#) [2809-3-01-50-00-00-07-0](#) [2809-2-01-01-00-00-07-0](#) [2809-2-01-50-00-00-07-0](#) [2809-1-01-01-00-00-07-0](#) [2809-1-01-50-00-00-07-0](#) [2808-4-01-01-00-00-07-0](#) [2808-4-01-50-00-00-07-0](#) [2808-3-01-01-00-00-07-0](#) [2808-3-01-50-00-00-07-0](#) [2808-2-01-01-00-00-07-0](#) [2808-2-01-50-00-00-07-0](#) [2808-1-01-01-00-00-07-0](#) [2808-1-01-50-00-00-07-0](#) [2807-4-01-01-00-00-07-0](#) [2807-4-01-50-00-00-07-0](#) [2807-3-01-01-00-00-07-0](#) [2807-3-01-50-00-00-07-0](#) [2807-2-01-01-00-00-07-0](#) [2807-2-01-50-00-00-07-0](#) [2807-1-01-01-00-00-07-0](#) [2807-1-01-50-00-00-07-0](#) [2762-4-01-01-00-00-07-0](#) [2762-4-01-50-00-00-07-0](#) [2715-4-01-01-00-00-07-0](#) [2715-4-01-50-00-00-07-0](#) [2715-3-01-01-00-00-07-0](#) [2715-3-01-50-00-00-07-0](#) [2715-2-01-01-00-00-07-0](#) [2715-2-01-50-00-00-07-0](#) [2701-4-01-01-00-00-07-0](#) [2701-4-01-50-00-00-07-0](#) [2701-3-01-01-00-00-07-0](#) [2701-3-01-50-00-00-07-0](#) [2701-2-01-01-00-00-07-0](#) [2701-2-01-50-00-00-07-0](#) [2701-1-01-01-00-00-07-0](#) [2701-1-01-50-00-00-07-0](#) [2807-2-01-44-00-00-07-0](#) [2701-1-01-44-00-00-07-0](#) [2701-2-01-44-00-00-07-0](#) [2701-3-01-44-00-00-07-0](#) [2701-4-01-44-00-00-07-0](#) [2715-2-01-44-00-00-07-0](#) [2715-3-01-44-00-00-07-0](#) [2715-4-01-44-00-00-07-0](#) [2762-4-01-44-00-00-07-0](#) [2807-1-01-44-00-00-07-0](#) [2807-3-01-44-00-00-07-0](#) [2807-4-01-44-00-00-07-0](#) [2808-1-01-44-00-00-07-0](#) [2808-2-01-44-00-00-07-0](#) [2808-3-01-44-00-00-07-0](#) [2808-4-01-44-00-00-07-0](#) [2809-1-01-44-00-00-07-0](#) [2809-2-01-44-00-00-07-0](#) [2809-3-01-44-00-00-07-0](#) [2809-4-01-44-00-00-07-0](#) [2808-1-01-00-00-00-07-0](#) [2715-4-01-00-00-00-07-0](#) [2808-3-01-00-00-00-07-0](#) [2701-1-01-00-00-00-07-0](#) [2809-1-01-00-00-00-07-0](#) [2807-3-01-00-00-00-07-0](#) [2807-1-01-00-00-00-07-0](#) [2809-4-01-00-00-00-07-0](#) [2807-4-01-00-00-00-07-0](#) [2715-3-01-00-00-00-07-0](#) [2809-3-01-00-00-00-07-0](#) [2762-4-01-00-00-00-07-0](#) [2701-4-01-00-00-00-07-0](#) [2807-2-01-00-00-00-07-0](#) [2701-2-01-00-00-00-07-0](#) [2808-2-01-00-00-00-07-0](#) [2715-2-01-00-00-00-07-0](#) [2809-2-01-00-00-00-07-0](#) [2701-3-01-00-00-00-07-0](#) [2808-4-01-00-00-00-07-0](#)