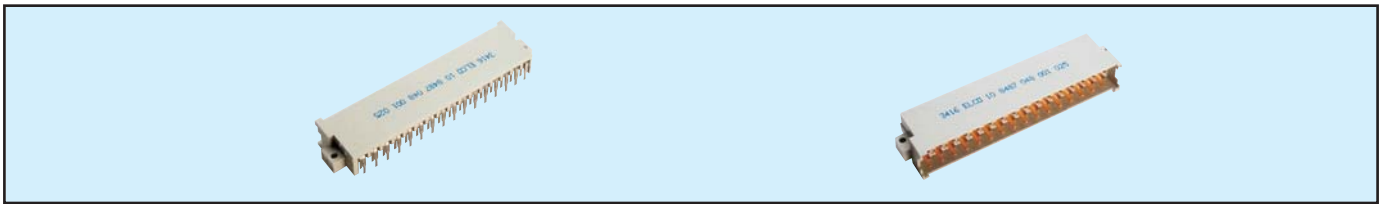



Male Style F

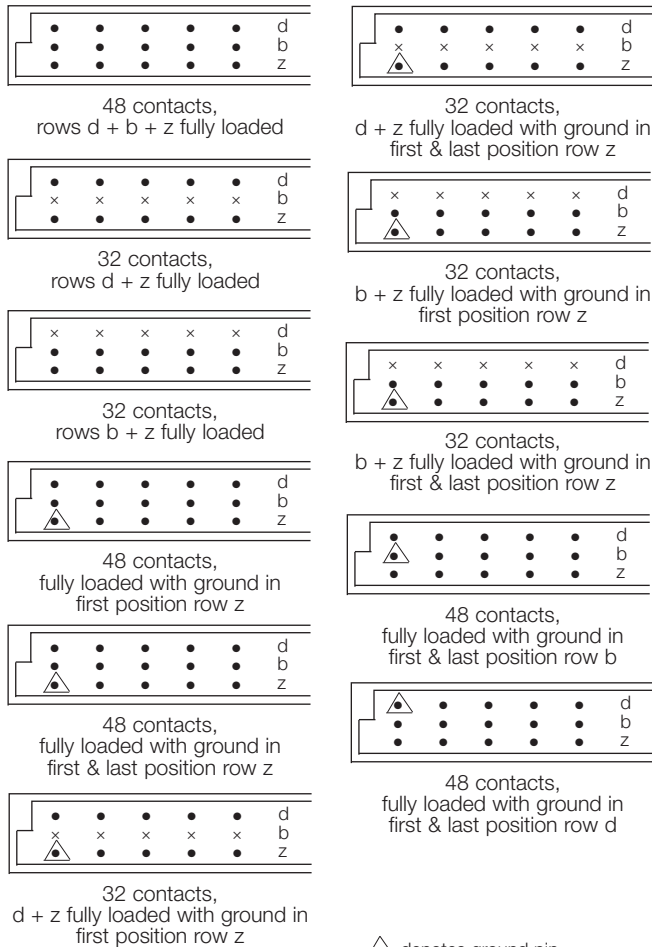
Series 8487 – 3 rows (3 x 16)



Contact Design and Termination Length	Number of Contacts	Loading Description	Part Number Performance classes according to DIN 41612	
			II	I
 3.0 mm (Y) Right Angled Pitch 5.08	32	d + z fully loaded	10 8487 048 001 026	10 8487 048 001 050
	32	b + z fully loaded	10 8487 048 001 029	10 8487 048 001 053
	32	d + z fully, Ground in z2	59 8487 048 000 055	59 8487 048 000 061
	32	d + z fully, Ground in z2 + z32	59 8487 048 000 056	59 8487 048 000 062
	32	b + z fully, Ground in z2	59 8487 048 000 057	59 8487 048 000 063
	32	b + z fully, Ground in z2 + z32	59 8487 048 000 058	59 8487 048 000 063
	48	d + b + z fully loaded	10 8487 048 001 025	10 8487 048 001 049
	48	fully loaded + Ground in z2	59 8487 048 000 053	59 8487 048 000 059
	48	fully, Ground in z2 + z32	59 8487 048 000 054	59 8487 048 000 060
	48	fully loaded + Ground in b2 + b32	59 8487 048 000 066	59 8487 048 000 065
	48	fully loaded + Ground in d2 + d32	59 8487 048 000 069	59 8487 048 000 068

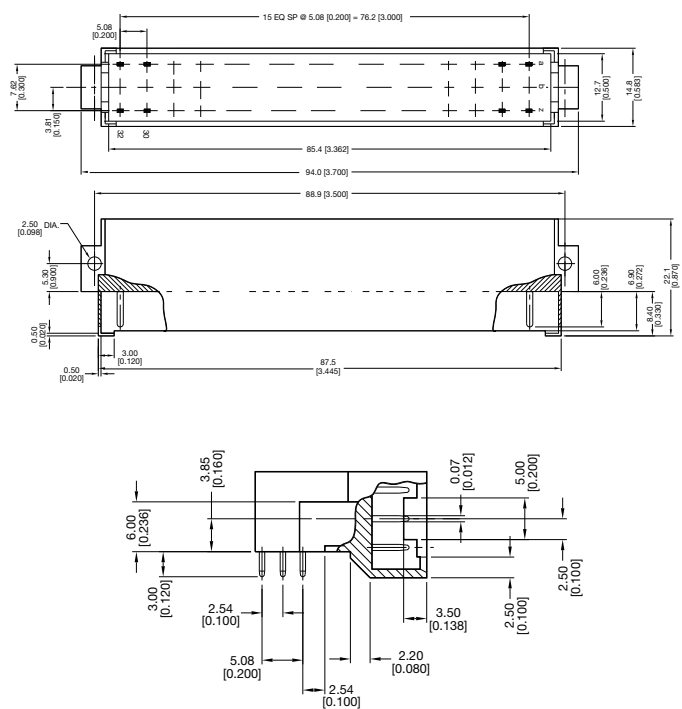
NB: Alternative Prefix Variations Available: 16, please refer to Page 10.
 Additional Plating & Loading Variations: Please contact your local AVX sales office or distributor.

LOADING DESCRIPTION



△ denotes ground pin

DIMENSIONS



Female Style F

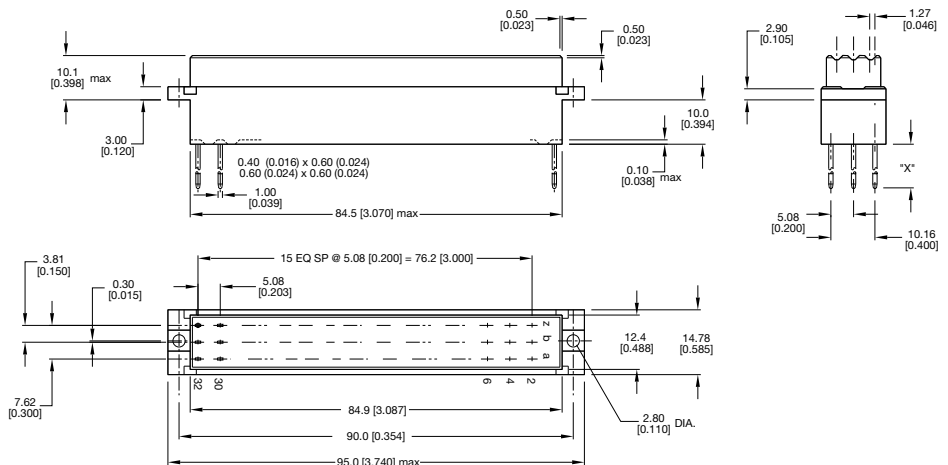
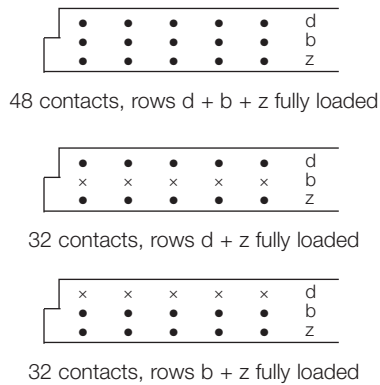
Series 8487 – 3 rows (3 x 16)



Contact Design and Termination Length	Number of Contacts	Loading Description	Part Number Performance classes according to DIN 41612	
			II	I
1 x 1 mm Post Profile 4.5 mm (X) Straight	48	d + b + z fully loaded	20 8487 048 001 025	20 8487 048 001 049
	32	d + z fully loaded	20 8487 048 001 026	20 8487 048 001 050
	32	b + z fully loaded	20 8487 048 001 029	20 8487 048 001 053
1 x 1 mm Post Profile 22.0 mm (X) Straight	48	d + b + z fully loaded	20 8487 048 002 025	20 8487 048 002 049
	32	d + z fully loaded	20 8487 048 002 026	20 8487 048 002 050
	32	b + z fully loaded	20 8487 048 002 029	20 8487 048 002 053
Solder eyelet 9.0 mm (X) Straight	48	d + b + z fully loaded	20 8487 048 003 025	20 8487 048 003 049
	32	d + z fully loaded	20 8487 048 003 026	20 8487 048 003 050
	32	b + z fully loaded	20 8487 048 003 029	20 8487 048 003 053
1 x 1 mm Post Profile 4.0 mm (X) Straight	48	d + b + z fully loaded	20 8487 048 004 025	20 8487 048 004 049
	32	d + z fully loaded	20 8487 048 004 026	20 8487 048 004 050
	32	b + z fully loaded	20 8487 048 004 029	20 8487 048 004 053
0.4 x 0.6 mm Post Profile 3.2 mm (X) Straight	48	d + b + z fully loaded	20 8487 048 005 025	20 8487 048 005 049
	32	d + z fully loaded	20 8487 048 005 026	20 8487 048 005 050
	32	b + z fully loaded	20 8487 048 005 029	20 8487 048 005 053

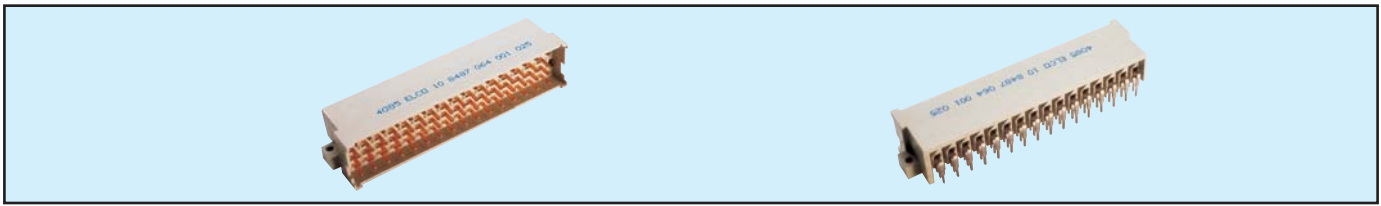
NB: Additional Plating & Loading Variations: Please contact your local AVX sales office or distributor.

LOADING DESCRIPTION DIMENSIONS



Male Style G

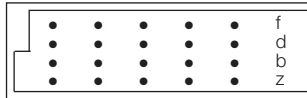
Series 8487 – 4 rows (4 x 16)



Contact Design and Termination Length	Number of Contacts	Loading Description	Part Number Performance classes according to DIN 41612	
			II	I
3.0 mm (Y) Right Angled	64	f + d + b + z fully loaded	10 8487 064 001 025	10 8487 064 001 049

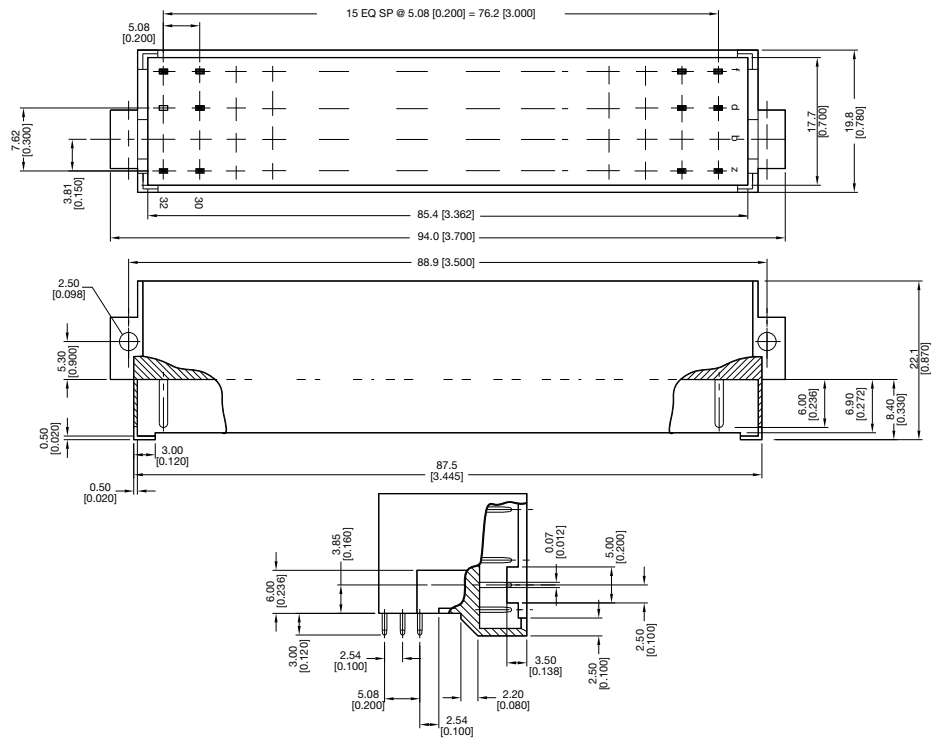
NB: Alternative Prefix Variations Available: 12, please refer to Page 10.
Additional Plating & Loading Variations: Please contact your local AVX sales office or distributor.

LOADING DESCRIPTION



64 contacts,
rows f + d + b + z fully loaded

DIMENSIONS



Female Style G



Series 8487 – 4 rows (4 x 16)



Contact Design and Termination Length	Number of Contacts	Loading Description	Part Number Performance classes according to DIN 41612	
			II	I
1 x 1 mm Post Profile 4.5 mm (X) Straight	64	f + d + b + z fully loaded	20 8487 064 001 025	20 8487 064 001 049
1 x 1 mm Post Profile 22.0 mm (X) Straight	64	f + d + b + z fully loaded	20 8487 064 002 025	20 8487 064 002 049

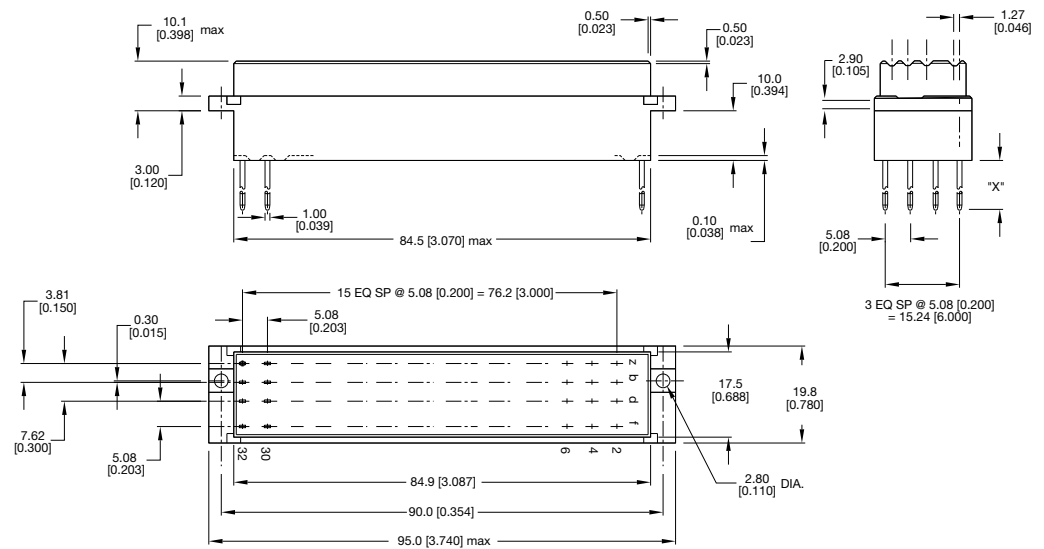
NB: Additional Plating & Loading Variations: Please contact your local AVX sales office or distributor.

LOADING DESCRIPTION



64 contacts,
rows f + d + b + z fully loaded

DIMENSIONS



Mouser Electronics

Authorized Distributor

Click to View Pricing, Inventory, Delivery & Lifecycle Information:

[AVX:](#)

[208487048005025](#) [208487048005050](#) [108487048001025](#) [108487048001026](#) [108487048001029](#)
[108487048001049](#) [108487048001050](#) [108487048001053](#) [108487064001049](#) [208487048001025](#) [208487048002025](#)
[208487048003029](#) [208487064001025](#) [208487064001049](#) [598487048000078](#)