

THIS DRAWING IS A CONTROLLED DOCUMENT. REF NO

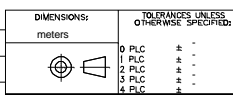
Part #	L (meters)	L (feet)	LC-Duplex Secure, Rose		LC-Duplex, Beige	
			IL (dB)	RL (dB)	IL (dB)	RL (dB)
0-1906056-1	0.950 - 1.050	3.11 - 3.44	0.5	-	0.5	-
0-1906056-2	1.950 - 2.050	6.39 - 6.72	0.5	-	0.5	-
0-1906056-3	2.950 - 3.050	9.67 - 10.00	0.5	-	0.5	-
0-1906056-4	3.920 - 4.080	12.86 - 13.38	0.51	-	0.51	-
0-1906056-5	4.920 - 5.080	16.14 - 16.66	0.51	-	0.51	-
0-1906056-6	5.920 - 6.080	19.42 - 19.94	0.51	-	0.51	-
0-1906056-7	6.920 - 7.080	22.70 - 23.22	0.51	-	0.51	-
0-1906056-8	7.920 - 8.080	25.98 - 26.50	0.51	-	0.51	-
0-1906056-9	8.850 - 9.150	29.03 - 30.01	0.51	-	0.51	-
1-1906056-0	9.850 - 10.150	32.31 - 33.30	0.52	-	0.52	-
1-1906056-1	10.850 - 11.150	35.59 - 36.58	0.52	-	0.52	-
1-1906056-2	11.850 - 12.150	38.87 - 39.86	0.52	-	0.52	-
1-1906056-3	12.850 - 13.150	42.15 - 43.14	0.52	-	0.52	-
1-1906056-4	13.850 - 14.150	45.43 - 46.42	0.52	-	0.52	-
1-1906056-5	14.850 - 15.150	48.72 - 49.70	0.52	-	0.52	-
1-1906056-6	15.840 - 16.160	51.96 - 53.01	0.52	-	0.52	-
1-1906056-7	16.830 - 17.170	55.21 - 56.33	0.53	-	0.53	-
1-1906056-8	17.820 - 18.180	58.46 - 59.64	0.53	-	0.53	-
1-1906056-9	18.810 - 19.190	61.71 - 62.95	0.53	-	0.53	-
2-1906056-0	19.800 - 20.200	64.96 - 66.27	0.53	-	0.53	-
2-1906056-1	20.790 - 21.210	68.20 - 69.58	0.53	-	0.53	-
2-1906056-2	21.780 - 22.220	71.45 - 72.90	0.53	-	0.53	-
2-1906056-3	22.770 - 23.230	74.70 - 76.21	0.53	-	0.53	-
2-1906056-4	23.760 - 24.240	77.95 - 79.52	0.54	-	0.54	-
2-1906056-5	24.750 - 25.250	81.20 - 82.84	0.54	-	0.54	-
2-1906056-6	25.740 - 26.260	84.44 - 86.15	0.54	-	0.54	-
2-1906056-7	26.730 - 27.270	87.69 - 89.46	0.54	-	0.54	-
2-1906056-8	27.720 - 28.280	90.94 - 92.78	0.54	-	0.54	-
2-1906056-9	28.710 - 29.290	94.19 - 96.09	0.54	-	0.54	-
3-1906056-0	29.700 - 30.300	97.44 - 99.40	0.55	-	0.55	-
3-1906056-1	30.690 - 31.310	100.68 - 102.72	0.55	-	0.55	-
3-1906056-2	31.680 - 32.320	103.93 - 106.03	0.55	-	0.55	-
3-1906056-3	32.670 - 33.330	107.18 - 109.35	0.55	-	0.55	-
3-1906056-4	33.660 - 34.340	110.43 - 112.66	0.55	-	0.55	-
3-1906056-5	34.650 - 35.350	113.68 - 115.97	0.55	-	0.55	-
3-1906056-6	35.640 - 36.360	116.92 - 119.29	0.55	-	0.55	-
3-1906056-7	36.630 - 37.370	120.17 - 122.60	0.56	-	0.56	-
3-1906056-8	37.620 - 38.380	123.42 - 125.91	0.56	-	0.56	-
3-1906056-9	38.610 - 39.390	126.67 - 129.23	0.56	-	0.56	-
4-1906056-0	39.600 - 40.400	129.92 - 132.54	0.56	-	0.56	-
4-1906056-1	40.590 - 41.410	133.16 - 135.85	0.56	-	0.56	-
4-1906056-2	41.580 - 42.420	136.41 - 139.17	0.56	-	0.56	-

Qty	U of M	Description	Item No.
2	piece	Trace Label	7
4	piece	Eyelet/Shrink tube assembly - White	6
AR	meter	2 fiber, 62.5/125, 2.0mm, Twinzip, Orange, OFNR (Riser)	5
2	piece	LC Connector Assy, 1.6mm-2.0mm, MM	4
2	piece	LC Connector Assy, MM	3
2	piece	LC Duplex clip, black	2
4	piece	LC, SC, FC Straight Boot, Beige	1

THIS INFORMATION IS CONFIDENTIAL AND PROPRIETARY TO TYCO ELECTRONICS CORPORATION. IT IS NOT TO BE DISCLOSED TO ANY OTHER PARTY WITHOUT THE WRITTEN AUTHORIZATION OF TYCO ELECTRONICS CORPORATION, HARRISBURG, PENNSYLVANIA.

LOC CE DIST 16

Rev	Per	EC#	RELEASE	DATE	DIN	APVD
A				0/26/2007	-	JD
P	LTR		REVISION RECORD			



DIN	Cable Assy Configurator	MATERIAL		HEAT TREAT	
CHK	Jeremy Duncan				
APVD	Jeremy Duncan				
NAME	FO C/A - 2 fiber, 62.5/125, OFNR (Riser) jacket, LC-Duplex Secure to LC-Duplex				
SCALE	NTS	SIZE	A2	DRAWING NO	C- 1906056
SHEET	2 of 4		REV	A	

Restricted To:

USED ON

Part #	L (meters)	L (feet)	LC-Duplex Secure, Rose		LC-Duplex, Beige	
			IL (dB)	RL (dB)	IL (dB)	RL (dB)
4-1906056-3	42.570 - 43.430	139.66 - 142.48	0.56	-	0.56	-
4-1906056-4	43.560 - 44.440	142.91 - 145.80	0.57	-	0.57	-
4-1906056-5	44.550 - 45.450	146.16 - 149.11	0.57	-	0.57	-
4-1906056-6	45.540 - 46.460	149.40 - 152.42	0.57	-	0.57	-
4-1906056-7	46.530 - 47.470	152.65 - 155.74	0.57	-	0.57	-
4-1906056-8	47.520 - 48.480	155.90 - 159.05	0.57	-	0.57	-
4-1906056-9	48.510 - 49.490	159.15 - 162.36	0.57	-	0.57	-
5-1906056-0	49.500 - 50.500	162.40 - 165.68	0.58	-	0.58	-
5-1906056-1	50.490 - 51.510	165.64 - 168.99	0.58	-	0.58	-
5-1906056-2	51.480 - 52.520	168.89 - 172.30	0.58	-	0.58	-
5-1906056-3	52.470 - 53.530	172.14 - 175.62	0.58	-	0.58	-
5-1906056-4	53.460 - 54.540	175.39 - 178.93	0.58	-	0.58	-
5-1906056-5	54.450 - 55.550	178.64 - 182.25	0.58	-	0.58	-
5-1906056-6	55.440 - 56.560	181.88 - 185.56	0.58	-	0.58	-
5-1906056-7	56.430 - 57.570	185.13 - 188.87	0.59	-	0.59	-
5-1906056-8	57.420 - 58.580	188.38 - 192.19	0.59	-	0.59	-
5-1906056-9	58.410 - 59.590	191.63 - 195.50	0.59	-	0.59	-
6-1906056-0	59.400 - 60.600	194.88 - 198.81	0.59	-	0.59	-
6-1906056-1	60.390 - 61.610	198.12 - 202.13	0.59	-	0.59	-
6-1906056-2	61.380 - 62.620	201.37 - 205.44	0.59	-	0.59	-
6-1906056-3	62.370 - 63.630	204.62 - 208.75	0.59	-	0.59	-
6-1906056-4	63.360 - 64.640	207.87 - 212.07	0.6	-	0.6	-
6-1906056-5	64.350 - 65.650	211.12 - 215.38	0.6	-	0.6	-
6-1906056-6	65.340 - 66.660	214.37 - 218.70	0.6	-	0.6	-
6-1906056-7	66.330 - 67.670	217.61 - 222.01	0.6	-	0.6	-
6-1906056-8	67.320 - 68.680	220.86 - 225.32	0.6	-	0.6	-
6-1906056-9	68.310 - 69.690	224.11 - 228.64	0.6	-	0.6	-
7-1906056-0	69.300 - 70.700	227.36 - 231.95	0.61	-	0.61	-
7-1906056-1	70.290 - 71.710	230.61 - 235.26	0.61	-	0.61	-
7-1906056-2	71.280 - 72.720	233.85 - 238.58	0.61	-	0.61	-
7-1906056-3	72.270 - 73.730	237.10 - 241.89	0.61	-	0.61	-
7-1906056-4	73.260 - 74.740	240.35 - 245.20	0.61	-	0.61	-
7-1906056-5	74.250 - 75.750	243.60 - 248.52	0.61	-	0.61	-
7-1906056-6	75.240 - 76.760	246.85 - 251.83	0.61	-	0.61	-
7-1906056-7	76.230 - 77.770	250.09 - 255.15	0.62	-	0.62	-
7-1906056-8	77.220 - 78.780	253.34 - 258.46	0.62	-	0.62	-
7-1906056-9	78.210 - 79.790	256.59 - 261.77	0.62	-	0.62	-
8-1906056-0	79.200 - 80.800	259.84 - 265.09	0.62	-	0.62	-

THIS DRAWING IS A CONTROLLED DOCUMENT. DWG NO

THIS INFORMATION IS CONFIDENTIAL AND PROPRIETARY TO TYCO ELECTRONICS CORPORATION. IT IS NOT TO BE DISCLOSED TO ANY OTHER PERSONS OR ORGANIZATIONS WITHOUT WRITTEN AUTHORIZATION FROM TYCO ELECTRONICS CORPORATION, HARRISBURG, PENNSYLVANIA.

LOC
CE
DIST
16

A	Rev Per EC#	RELEASE	0/26/2007	-	JD				
P	LTR	REVISION RECORD	DATE	DN	APVD				

DIMENSIONS: meters

RESTRICTED TO:

DIN	Cable Assy Configurator	MATERIAL		HEAT TREAT	
CHK	Jeremy Duncan				
APVD	Jeremy Duncan				
NAME	FO C/A - 2 fiber, 62.5/125, OFNR (Riser) jacket, LC-Duplex Secure to LC-Duplex				
SCALE	NTS	SIZE	A2	DRAWING NO	C- 1906056
SHEET	3 of 4			REV	A

8 7 6 5 4 3 2 1

D
C
B
A

Label 1

Per specification 107-1645-1



Trace # - Bar Code
 Trace # - Human Readable
 Part Number
 Country of Origin

This label is used on all lengths on this drawing.

Label 2

Per specification 107-1645-1



Trace # - Bar Code
 Trace # - Human Readable
 Part Number
 Country of Origin

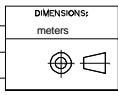
This label is used on all lengths on this drawing.

THIS DRAWING IS A CONTROLLED DOCUMENT. DWG NO

THIS INFORMATION IS CONFIDENTIAL AND PROPRIETARY TO TYCO ELECTRONICS, INC. IT IS TO BE KEPT CONFIDENTIAL AND NOT DISCLOSED TO ANY OTHERS. ANY UNAUTHORIZED DISCLOSURE OR USE OF THIS INFORMATION IS STRICTLY PROHIBITED. TYCO ELECTRONICS CORPORATION, HARRISBURG, PENNSYLVANIA

LOC
CE
DIST
16

P	LTR	Rev Per EC#	RELEASE	DATE	DIN	APVD			



DIMENSIONS:
meters

TOLERANCES UNLESS OTHERWISE SPECIFIED:
 0 PLC ± -
 1 PLC ± -
 2 PLC ± -
 3 PLC ± -
 4 PLC ± -

Restricted To:

DIN	Cable Assy Configurator	MATERIAL	HEAT TREAT
CHK	Jeremy Duncan		
APVD	Jeremy Duncan	AMP Tyco Electronics, Inc. Harrisburg, PA 17105-3608	
NAME	FO C/A - 2 fiber, 62.5/125, OFNR (Riser) jacket, LC-Duplex Secure to LC-Duplex		
SCALE	NTS	SIZE	A2
DRAWING NO	C- 1906056		SHEET
			4 of 4
REV	A		

Mouser Electronics

Authorized Distributor

Click to View Pricing, Inventory, Delivery & Lifecycle Information:

[TE Connectivity:](#)

[2-1906056-5](#)