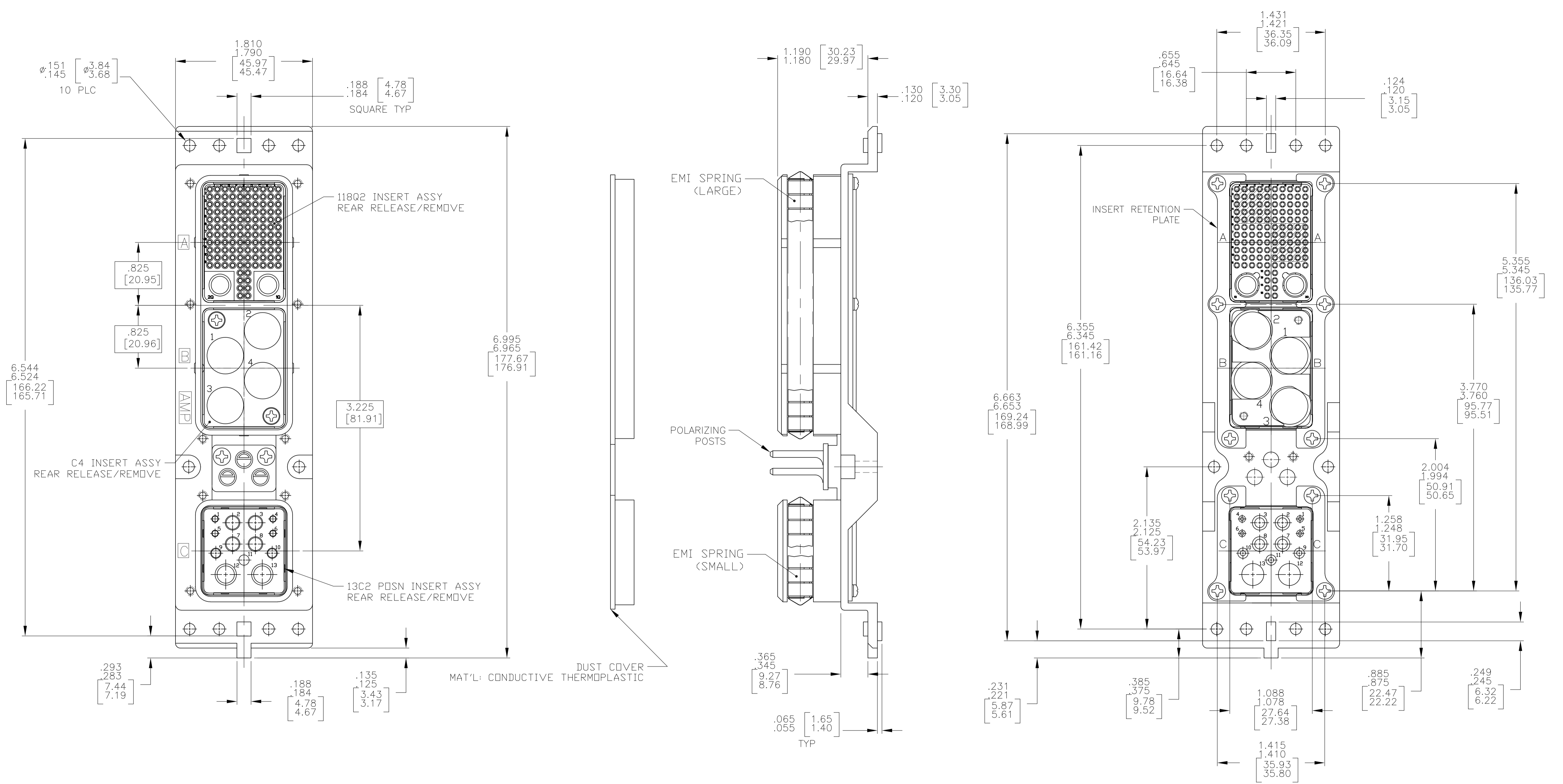


| LOC | | DIST | | REVISIONS | | | |
|-----|-------------|-------------|---------|-----------|------|----|-----|
| F | LTR | DESCRIPTION | DATE | DN | APVD | BY | CHK |
| B | REV PER ECO | 11-009143 | 5-20-11 | CT | WB | | |



- CONNECTOR DIMENSIONS ARE PER ARINC 600 SPECIFICATION UNLESS OTHERWISE SPECIFIED.
- DUST COVER INSTALLED FOR SHIPPING.
- KEYING SHOWN IN POSITION *01* FOR ILLUSTRATION ONLY. CONNECTORS SHIPPED WITH KEYING INSTALLED IN POSITION PER TABLE.
- CONTACTS AND FILLER PLUGS SHIPPED IN A SEPARATE CONTAINER WITH CONNECTOR.

| COMPONENT | MATERIAL | FINISH |
|------------------------------------|--|---|
| SHELL | DIE CAST ALUMINUM PER ASTM-B-85 | ELECTROLESS NICKEL PER MIL-C-26074 |
| INSERT RETENTION PLATES | ALUMINUM ALLOY PER ASTM-B-209 | ELECTROLESS NICKEL PER MIL-C-26074 |
| SCREWS AND LOCKWASHERS | STEEL OR STAINLESS STEEL | CHROMATE OVER ZINC OR PASSIVATED |
| POLARIZING POSTS | ALUMINUM ALLOY PER ASTM-B-209 | BLUE ANODIZED PER MIL-A-8625 |
| POLARIZING POST RETAINING PLATE | ALUMINUM ALLOY PER ASTM-B-209 | BLUE ANODIZED PER MIL-A-8625 |
| 118Q2 & 13C2 INSERT | THERMOSET OR THERMOPLASTIC PPS PER MIL-M-24519 | - |
| C4 INSERT | ALUMINUM ALLOY PER ASTM-B-209 | CHEMICAL CONVERSION PER MIL-C-5541, CLASS 1A |

| | | |
|-----------------|---|-------------|
| *01* | MODULE A: TE PART NO. 208262-3 (SZ 22 PIN CONTACT QTY = 118) TE PART NO. 1445693-1 (SZ 8 QUADRAX; QTY = 2) | 2157220-1 |
| | MODULE B: NONE MODULE C: TE PART NO. 208273-2 (SZ 12 SOCKET CONTACT QTY = 4) TE PART NO. 1663767-7 (SZ 16 FILLER PLUG QTY = 3) TE PART NO. 1663767-6 (SZ 20 FILLER PLUG QTY = 4) TE PART NO. 1484225-1 (SZ 5 FILLER PLUG QTY = 2) | |
| KEYING POSITION | CONTACTS & FILLER PLUGS INCLUDED NOT INSTALLED | PART NUMBER |

THIS DRAWING IS A CONTROLLED DOCUMENT. DIN C.C.THOMAS 12-16-10
 DIMENSIONS: INCHES TOLERANCES UNLESS OTHERWISE SPECIFIED:
 0. PLC ± .005
 1. PLC ± .005
 2. PLC ± .005
 3. PLC ± .005
 4. PLC ± .005
 ANGLES ± .5°

APVD: K.THACKSTON 12-16-10
 PRODUCT SPEC: PLUG ASSY, SIZE 2, REAR RELEASE, ARINC 600 (118Q2/C4/13C2)
 APPLICATION SPEC: A1 00779 ©=2157220
 WEIGHT: --
 CUSTOMER DRAWING SCALE: 3:2 SHEET: 1 OF 1 REV: B

STE TE Connectivity