

# PSR-SCP- 24DC/URM4/4X1/2X2/B PSR-SPP- 24DC/URM4/4X1/2X2/B

## Safety Relay as a Contact Extension Block



### INTERFACE

Data Sheet

© PHOENIX CONTACT - 05/2006

### Description

The **PSR-...- 24DC/URM4/4X1/2X2/B** safety relay can be used as a contact extension block in safety circuits according to DIN EN 60204-1/VDE 0113-1.

The device has an interface for the T-BUS DIN rail connector. This interface can be used for single-channel control and monitoring. Alternatively, the device can also be operated in single-channel mode via a contact on the basic device.

Depending on the external wiring, the maximum safety category that can be achieved is safety category 4 according to EN 954-1.

The relay has four enable current paths, one signaling current path, and one confirmation path.

The contacts drop without delay according to stop category 0 (DIN EN 60204-1/VDE 0113-1).

The extension unit can be used as a contact multiplier for emergency stop relays and two-hand controls.



Observe the safety instructions on page 4.



Make sure you always use the latest documentation. It can be downloaded at [www.download.phoenixcontact.com](http://www.download.phoenixcontact.com).

A conversion table is available on the Internet at [http://www.download.phoenixcontact.com/general/7000\\_en\\_00.pdf](http://www.download.phoenixcontact.com/general/7000_en_00.pdf).



This data sheet is valid for all products listed on the following page:

## Ordering Data

### Safety Relays

Description	Type	Order No.	Pcs./Pkt.
Safety relay as a contact extension block, with screw connection	PSR-SCP- 24DC/URM4/4X1/2X2/B	2981677	1
Safety relay as a contact extension block, with spring-cage connection	PSR-SPP- 24DC/URM4/4X1/2X2/B	2981680	1

### Accessories

Description	Type	Order No.	Pcs./Pkt.
DIN rail connector, yellow, for PSR applications	PSR-TBUS	2890425	50
Dummy plug	PSR-TBUS-TP	2981716	50

### Documentation

Description	Type	Order No.	Pcs./Pkt.
Application manual for PSR safety relays	UM EN SAFETY RELAY APPLICATION	2888712	1

## Technical Data

### Input Data

Nominal input voltage $U_N$	24 V DC
Permissible range	0.85 - 1.1 x $U_N$
Typical current consumption at $U_N$	100 mA
Typical response time (K1, K2)	10 ms
Typical release time (K1, K2)	10 ms
Surge protection	Suppressor diode
Status indicators (K1, K2)	Green LED

### Output Data

Contact type: Positively driven contact assembly Class A according to EN 50205	4 enable current paths, 1 signaling current path, 1 confirmation path	
Contact material	Silver tin oxide (AgSnO <sub>2</sub> )	
Maximum switching voltage	250 V AC/DC	
Minimum switching voltage	15 V AC/DC	
Limiting continuous current		
N/O contact	6 A	
N/C contact	3 A	
Maximum inrush current		
N/O contact	6 A	
N/C contact	3 A	
Minimum switching current	25 mA	
Maximum shutdown power <sup>1</sup>	Ohmic load $\tau = 0$ ms	Inductive load $\tau = 40$ ms
	24 V DC 144 W (72 W) <sup>1</sup>	48 W
	48 V DC 288 W (144 W) <sup>1</sup>	40 W
	110 V DC 77 W	35 W
	220 V DC 88 W	33 W
	250 V AC 1500 VA (750 VA) <sup>1</sup>	
Minimum switching power	0.4 W	
Mechanical service life	10 <sup>7</sup> cycles, approximately	

**Output Data (Continued)**

Switching capacity according to DIN EN 60947-5-1/VDE 0660-200	Cycles	DC13	AC15
	<b>360/h:</b>	24 V:	6 A
		230 V:	–
	<b>3600/h:</b>	24 V:	3 A
		230 V:	–
			5 A
			3 A

Short-circuit protection of the output circuits, external

Enable current paths  
Signaling current path

NEOZED 10 A gL/gG  
NEOZED 4 A gL/gG

<sup>1</sup> The maximum values given in brackets apply to N/C contacts 61-62.**General Data**

Permissible ambient operating temperature	-20°C to +55°C
Nominal operating mode	100% operating factor
Degree of protection according to VDE 0470-1	
Housing	IP20
Connection terminal blocks	IP20
Installation location	IP54, minimum
Mounting position	Any
Air and creepage distances between circuits	
Basic insulation	According to DIN EN 50178:1998-04 <sup>1</sup>
Impulse voltage withstand level	4 kV <sup>1</sup>
Pollution degree	2
Surge voltage category	III
Dimensions (W x H x D)	
PSR-SCP- 24DC/URM4/4X1/2X2/B	22.5 mm x 99 mm x 114.5 mm
PSR-SPP- 24DC/URM4/4X1/2X2/B	22.5 mm x 112 mm x 114.5 mm
Conductor cross section	
PSR-SCP- 24DC/URM4/4X1/2X2/B	0.2 mm <sup>2</sup> ... 2.5 mm <sup>2</sup>
PSR-SPP- 24DC/URM4/4X1/2X2/B	0.2 mm <sup>2</sup> ... 1.5 mm <sup>2</sup>
Housing material	Polyamide PA, not reinforced

<sup>1</sup> Safe isolation, reinforced insulation, and 6 kV between the input circuit/N/C contacts and the enable contact current paths.**Tests/Approvals**

BG/GS



UL

applied for

## Safety Instructions



- During operation, parts of electrical switching devices carry hazardous voltages.
- Before working on the device, disconnect the power.
- Please observe the safety regulations of electrical engineering and industrial safety and liability associations.  
Disregarding these safety regulations may result in death, serious personal injury or damage to equipment.
- Startup, assembly, modifications, and upgrades may only be carried out by a skilled electrical engineer.



- For emergency stop applications, the machine must be prevented from restarting automatically by a higher-level control system.
- Protective covers must not be removed when operating electrical switching devices.

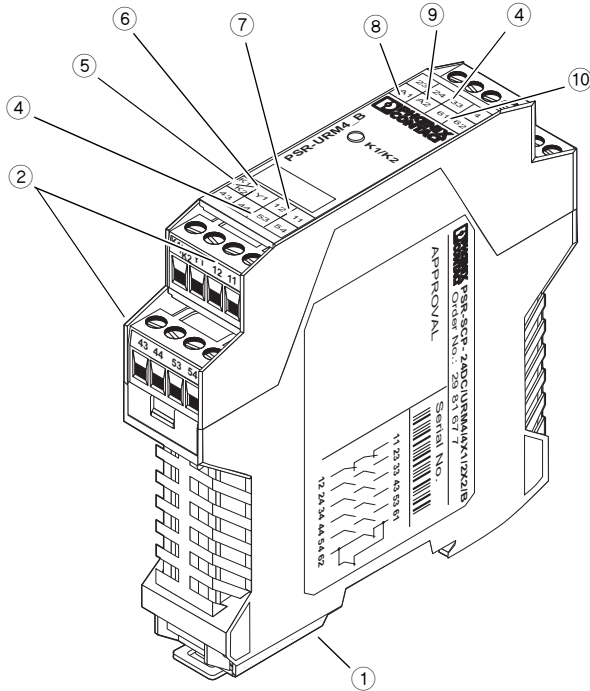


- In the event of an error, replace the device immediately.
- Repairs, especially if the housing must be opened, may only be carried out by the manufacturer or authorized persons. Otherwise the warranty is invalidated.

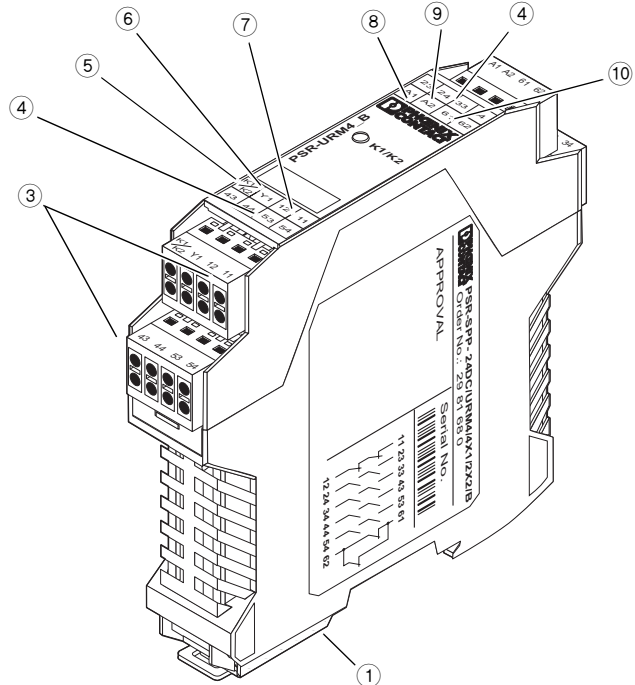


When operating relay modules the operator must meet the requirements for noise emission for electrical and electronic equipment (EN 61000-6-4) on the contact side and, if required, take appropriate measures.

**Structure**



PSR-SCP- 24DC/URM4/4X1/2X2/B



PSR-SPP- 24DC/URM4/4X1/2X2/B

Figure 1 Structure

- 1 Metal lock for mounting on the DIN rail
- 2 Plug-in COMBICON screw terminal blocks
- 3 Plug-in COMBICON spring-cage terminal blocks
- 4 23-24, 33-34, 43-44, and 53-54: Enable current paths
- 5 K1, K2: 24 V DC input
- 6 Y1: Connection to the DIN rail connector
- 7 11-12: Confirmation contacts
- 8 A1: Connection to the DIN rail connector
- 9 A2: Ground connection
- 10 61-62: Alarm contacts

**Block Diagram**

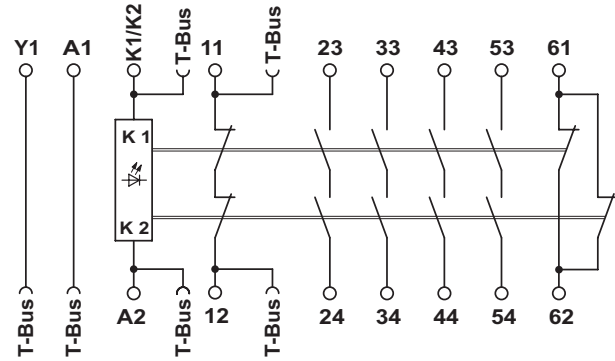


Figure 2 Block diagram

## Function

When a 24 V DC voltage is applied at input K1-K2 (or via the DIN rail connector), both relays are activated. The LED lights up and the contacts for enable current paths 23-24, 33-34, 43-44, and 53-54 close. Alarm contacts 11-12 and 61-62 open.

If the voltage is switched off at input K1-K2, the enable contacts open and the alarm contacts close.

For additional connection examples, see page 7.

## Connection Notes



- For PSR applications, only yellow PSR-TBUS connectors (Order No. 2890425) may be used. Connection with another T-BUS is not permitted.
- Devices may only be mounted on/removed from the T-BUS when the power is switched off.
- A T-BUS unit can contain a basic device (PSR-...-SDC...) and a maximum of 10 extension units (PSR-UR...). Extension units must be mounted to the right of the basic device.
- The feedback circuit must be closed at the last extension unit (on the right): jumper at Y1 and 12 or PSR-TBUS-TP dummy plug (Order No. 2981716).
- The voltage supply can be provided at any PSR device or using a system power supply via the T-BUS.

When using T-BUS DIN rail connectors, connect together the required number of T-BUS connectors and push them onto the DIN rail. When attaching the safety relay to the DIN rail, ensure that it is aligned correctly with the T-BUS connector (see Figure 3).

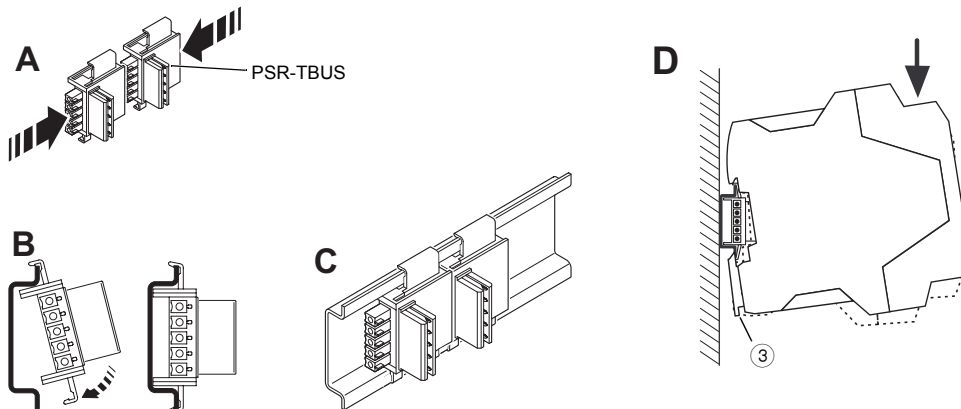


Figure 3 Using the T-BUS DIN rail connector

