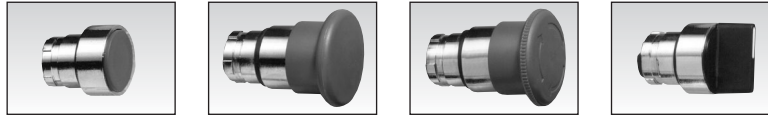


Actuators (Ø 22 mm) for manually operated valves

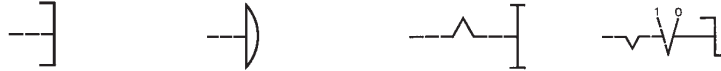


Part numbers

Push buttons	Red	24 679 129	24 679 173	24 679 171	—
	Green	24 679 128	—	—	—
	Black	24 679 127	24 679 172	—	—
2-position rotary switches		—	—	—	24 679 174
3-position rotary switches		—	—	—	—
Function		Flush push contact	Emergency stop plastic Ø 40	Emergency stop Ø 40 mm push-turn	Black symmetrical actuator

1

Symbol



Position

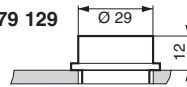


Weight	g	30	45	45	45
--------	---	----	----	----	----

Dimensions

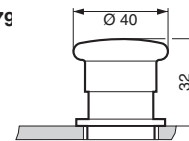
24 679 127 - 24 679 128

24 679 129



24 679 171 - 24 679 172

24 679



Part numbers

2-position rotary switches	24 679 180	—	24 679 176	24 679 178	24 679 182	24 679 181
3-position rotary switches	—	—	—	—	—	—
Function	RONIS key 455 removable in position 0	—	Black symmetrical actuator	Black symmetrical actuator with return	RONIS key 455 remov. in pos. 0 3 positions with spring to centre	RONIS key 455 removable in position 0 3 fixed positions

1

Symbol



Position

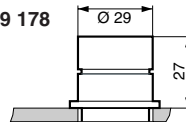


Weight	70	45	45	70	70
--------	----	----	----	----	----

Dimensions

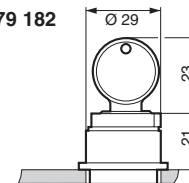
24 679 174 - 24 679 176

24 679 178



24 679 180 - 24 679 181

24 679 182



To order, specify:

Standard products

1 Part number

Example : Actuators Ø 22 mm 24 679 129

Products and specifications subject to change without notice.

Order/Technical Support – Tel: (800) 677-5311 / FAX: (800) 677-3865 / www.crouzet-usa.com