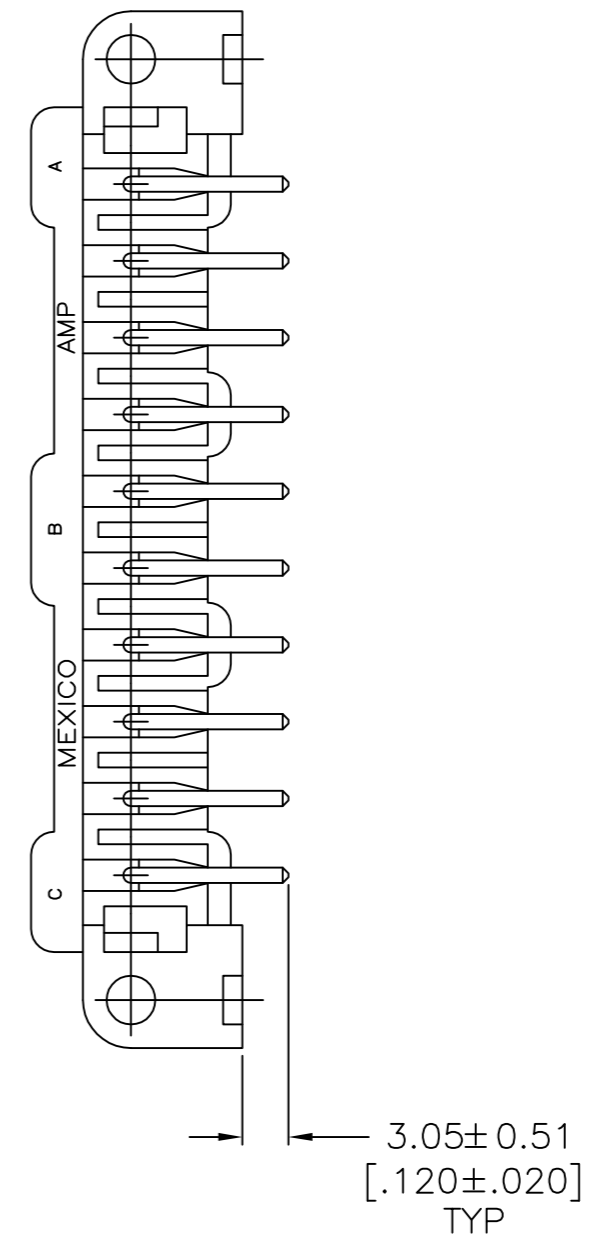
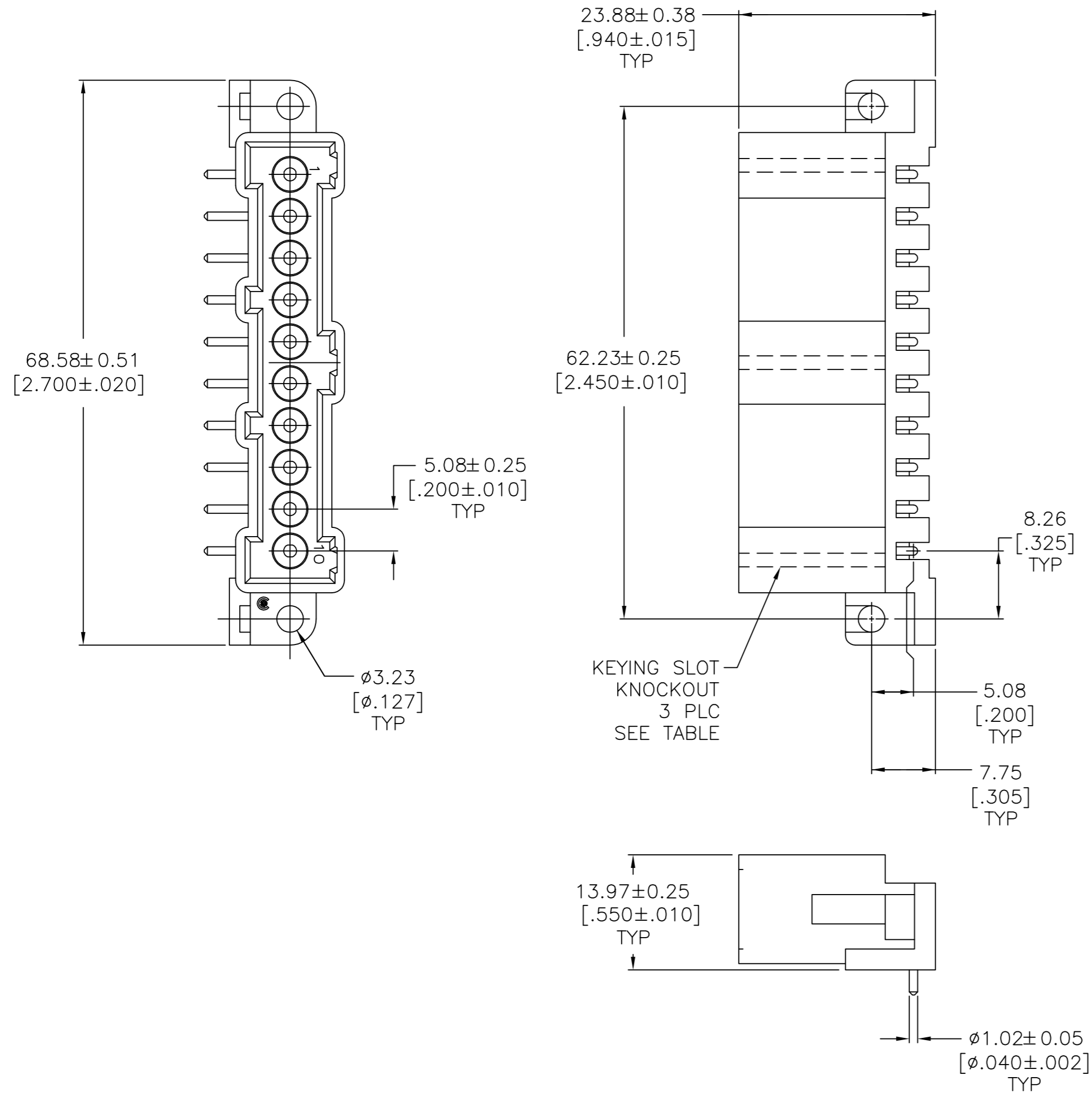


THIS DRAWING IS UNPUBLISHED. RELEASED FOR PUBLICATION
 © COPYRIGHT - TE Connectivity ALL RIGHTS RESERVED.

REVISIONS					
P	LTR	DESCRIPTION	DATE	DWN	APVD
	K	REVISED PER ECR-05-5072	27JUN2005	SW	GS
	K1	REVISED PER ECO-09-021826	12JAN10	KK	AEG
	L	REVISED PER ECO-17-011181	04AUG2017	RS	MZ



- 1 TIN-LEAD PLATED CONTACTS.
- 2 TIN PLATED CONTACTS.
- 3 OBSOLETE PARTS: OBSOLETE CIS STREAMLINING PER D.RENAUD/D.SINISI

3	OBSELETE	1	A & C	3-208403-5
		2	B	3-208403-4
		2	A	3-208403-3
		2	-	3-208403-2
		1	B	2-208403-1
OBSELETE	1	A	1-208403-1	
	1	-	208403-1	
NOTES	MATERIAL REMOVED FROM KEYING SLOT		PART NUMBER	

THIS DRAWING IS A CONTROLLED DOCUMENT.		DWN	L.SIPE	08/25/92				
DIMENSIONS: mm [INCHES]		CHK	R.STONE	9-4-92				
TOLERANCES UNLESS OTHERWISE SPECIFIED:		APVD	-	-	NAME			
0 PLC ± -		PRODUCT SPEC	-	-	HEADER ASSEMBLY, 10 POSN, PIN, METRIMATE			
1 PLC ± -		APPLICATION SPEC	-	-	SIZE	CAGE CODE	DRAWING NO	RESTRICTED TO
2 PLC ± 0.13 [.005]		WEIGHT	-	-	A2	00779	C=208403	-
3 PLC ± -		CUSTOMER DRAWING		SCALE	2:1	SHEET	1 of 1	REV
4 PLC ± -								L
ANGLES ± -								
FINISH								
MATERIAL: NYLON, RED								

Mouser Electronics

Authorized Distributor

Click to View Pricing, Inventory, Delivery & Lifecycle Information:

[TE Connectivity:](#)

[2-208403-1](#)