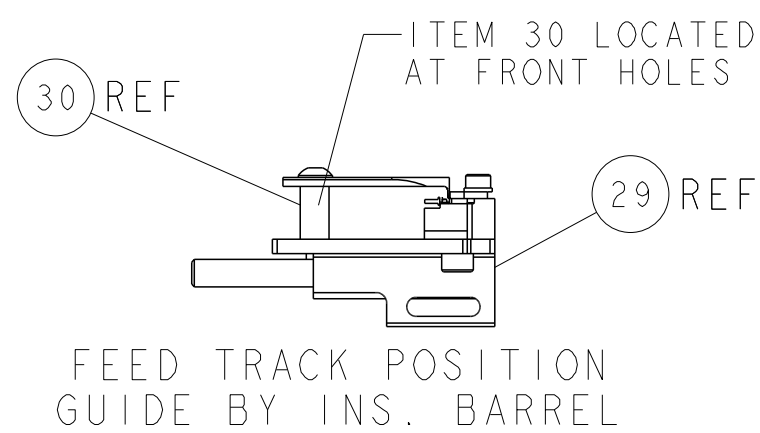
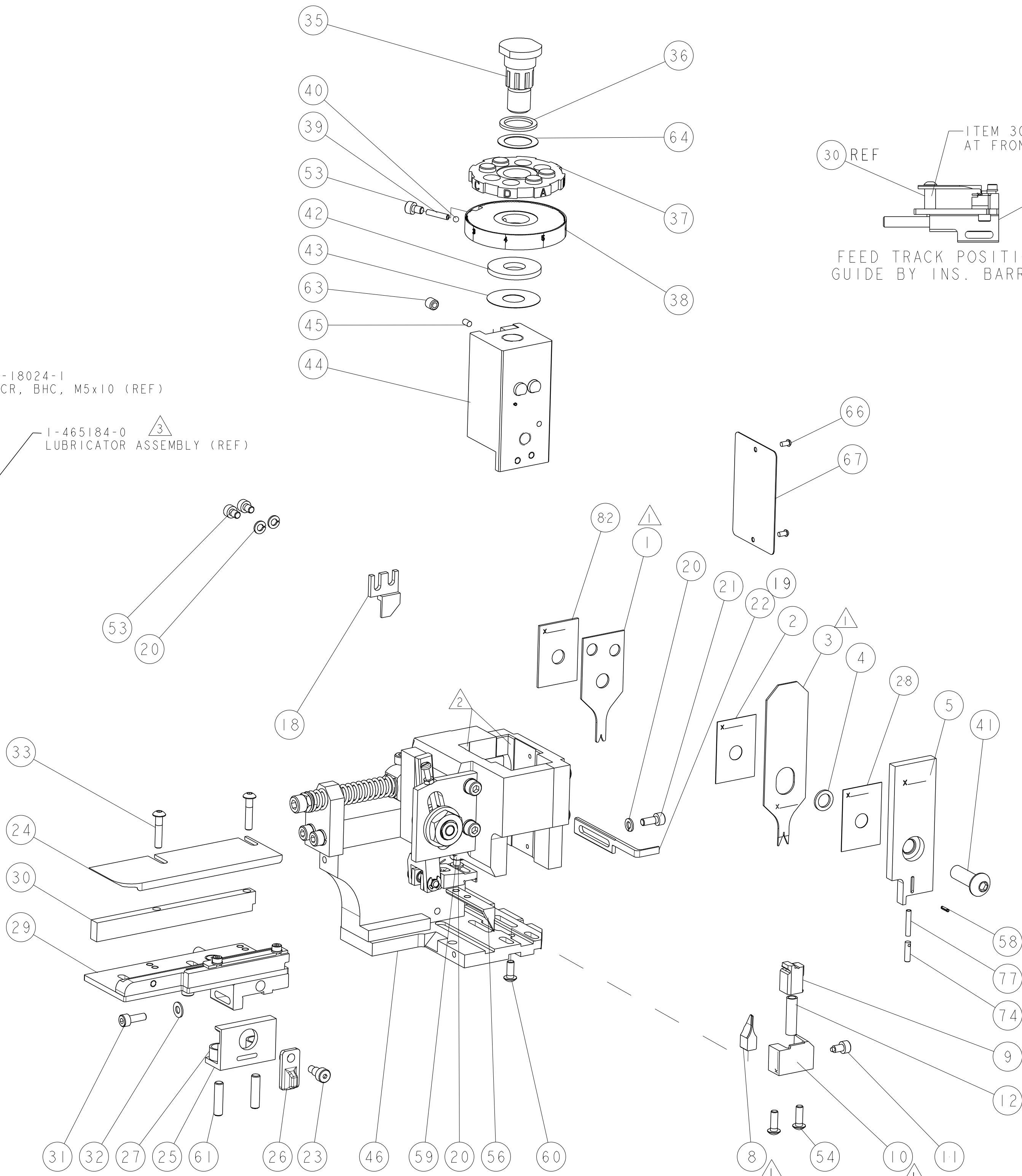
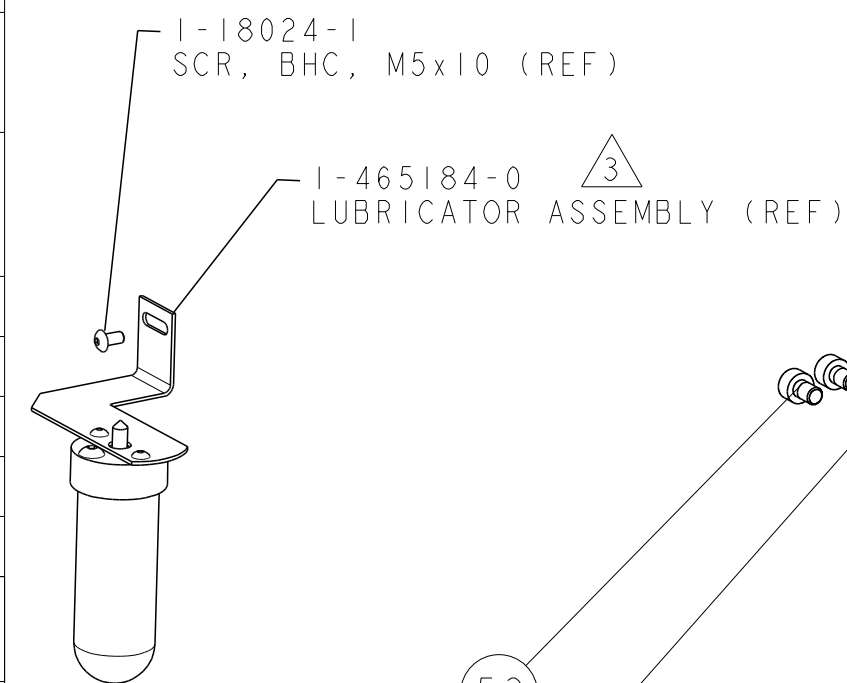




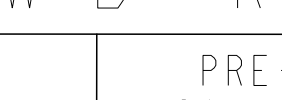

1. RECOMMENDED SPARE PARTS.
2. GREASE RAM, CAM, CAM FOLLOWER AND FEED ROD LIGHTLY.
3. CERTAIN TERMINALS REQUIRE LUBRICATION. REFER TO THE APPLICATOR INSTRUCTION SHEET FOR MORE INFORMATION.
4. LUBRICATE DAILY PER THE APPLICATOR INSTRUCTION SHEET SUPPLIED WITH THE APPLICATOR.

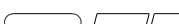
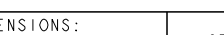


SET UP GAGE 458637-3	LOC	DIST	REVISIONS					
	A	66	P	LTR	DESCRIPTION	DATE	DWN	APVD
				C	ECR-11-012247	14JUN2011	RK	GB
				D	ECR-14-012370	18AUG2014	JH	TE

-	1	1	1	1	1-455888-1	SPACER, CRIMPER	82
-	1	1	1	1	547505-3	SPRING, COMPRESSION	77
-	1	1	1	1	854769-4	HOLDER, INS	74
-	1	1	1	1	1338705-1	DOCUMENTATION PACKAGE	71
-	1	1	1	1	461264-1	PLATE, IDENTIFICATION	67
-	2	2	2	2	21017-2	SCREW, DRIVE	66
-	1	1	1	1	986950-1	WASHER, FLAT PRECISION	64
-	1	1	1	1	3-18031-0	SCR, SET, CUP POINT M6 X 6.0	63
-	2	2	2	2	2-18032-5	SCR, SET, FLT POINT M5 X 20.0	61
-	1	1	1	1	18024-7	SCR, BTN SKT HD CAP (M4 X 10.0)	60
-	1	1	1	1	5-18022-2	SCR, HEX HD CAP M4 X 8.0	59
-	1	1	1	1	21028-2	PIN, SLOTTED SPRING .062 X .250	58
-	1	1	1	1	1338685-1	PAWL, FEED	56
-	2	2	2	2	18024-8	SCR, BTN SKT HD CAP (M4 X 12.0)	54
-	3	3	3	3	18023-9	SCR, SKT HD CAP M4 X 6.0	53
-	1	1	1	1	18024-3	SCR, BTN SKT HD CAP (M3 X 10.0)	49
-	1	-	1	-	1338675-1	CAM, UNIVERSAL PRE FEED	48
-	-	1	-	1	1338676-1	CAM, UNIVERSAL POST-FEED	47
-	1	1	1	1	1320999-3	APPLICATOR SUBASSEMBLY, HDI	46
-	1	1	1	1	690191-1	PLUG,NYLON	45
-	1	1	1	1	1633724-5	RAM, (SIDE FEED)	44
-	1	1	1	1	690125-1	SHIM SUB-ASSY	43
-	1	1	1	1	690124-3	WASHER, RAM (.110)	42
-	1	18024-6			2-18024-6	SCR, BTN SKT HD CAP (M8 X 25.0)	41
-	1	1	1	1	23241-1	BALL, STEEL	40
-	1	1	1	1	2-22278-7	SPRING, COMPRESSION	39
-	1	1	1	1	1320922-3	DISC, ADJUST, INSULATION CRIMP	38
-	1	1	1	1	354777-1	WIRE DISC, ASSEMBLY	37
-	1	1	1	1	22480-5	SPRING, COMPRESSION	36
-	1	1	1	1	690212-1	POST, RAM	35
-	2	2	2	2	1-18024-0	SCR, BTN SKT HD CAP (M4 X 20.0)	33
-	1	1	1	1	18027-2	WASHER, FLAT, REG M4	32
-	1	1	1	1	1-18023-2	SCR, SKT HD CAP M4 X 12.0	31
-	1	1320908-7			1-1320908-7	SPACER, STRIP GUIDE	30
-	1	1	1	1	1633073-3	STRIP GUIDE ASSEMBLY	29
-	1	1	1	1	455888-3	SPACER, CRIMPER	28
-	2	2	2	2	1-22284-0	SPRING, COMPRESSION	27
-	1	1	1	1	356835-1	LEVER, DRAG RELEASE	26
-	1	1	1	1	240792-1	DRAG, TERMINAL	25
-	1	1	1	1	1320928-5	STRIP GUIDE	24
-	1	1	1	1	980371-4	SCR, SKT HD SHLDR 5.0 DIA X 6.0	23
-	-	1	-	1	690472-6	STRIPPER	22
-	1	1	1	1	1-18023-1	SCR, SKT HD CAP M4 X 10.0	21
-	4	4	4	4	18025-2	WASHER, SPRG LOCK, REG M4	20
-	1	-	1	-	1-1338987-7	STRIPPER	19
-	1	1	1	1	2047247-1	HOLD DOWN, TERMINAL	18
-	-	-	-	-	-	-	13
-	1	1	1	1	3-22280-3	SPRING, COMPRESSION	12
-	1	1	1	1	356885-5	STOP, SHEAR	11
-	1	1	1	1	1-1320921-0	SHEAR HOLDER, FRONT, CUT	10
-	1	1	1	1	1633861-1	SHEAR, FLOATING	9
1	2	2	1	1	6-1633703-8	ANVIL, COMBINATION	8
-	-	-	-	-	-	-	7
-	-	-	-	-	-	-	6
-	1	1	1	1	854772-1	DEPRESSOR, SHEAR	5
-	1	1	1	1	3-238011-7	BLOCK, CRIMPER SPACER	4
1	2	2	1	1	1633984-2	CRIMPER, INSULATION BOX	3
-	1	1	1	1	455888-2	SPACER, CRIMPER	2
1	2	2	1	1	2-1633713-3	CRIMPER, WIRE PREMIUM	1

VIEW B    ROTATED 180°

POST-FEED 40mm STROKE	POST-FEED 30mm STROKE	PRE-FEED 30mm STROKE	PRE-FEED 40mm STROKE
			

<small>THIS DRAWING IS A CONTROLLED DOCUMENT. FOR INFORMATION, ANY CHANGES TO THIS DOCUMENT SHOULD BE CONTACTED FOR THE LATEST VERSION.</small>		DWG S_ZOU 14APR2010 CHK T_ELBIN 14APR2010 APP'D S_XI 14APR2010		 TE Connectivity Harrisburg, PA 17105-3608	
DIMENSIONS: mm [IN]		TOLERANCES UNLESS OTHERWISE SPECIFIED: 0 PLC ± 1 PLC ± 2 PLC ± 3 PLC ± 4 PLC ± ANGLES ±°		NAME SIDE FEED HDI APPLICATOR	
		PRODUCT SPEC APPLICATION SPEC See Table		SIZE CAGE CODE DRAWING NO A1 00779 C=2114097	
MATERIAL -		FINISH -		RESTRICTED TO -	
< select from list >		WEIGHT -		SCALE 3:5 SHEET 1 OF 1 REV D	

# Mouser Electronics

Authorized Distributor

Click to View Pricing, Inventory, Delivery & Lifecycle Information:

[TE Connectivity:](#)

[2114097-1](#)