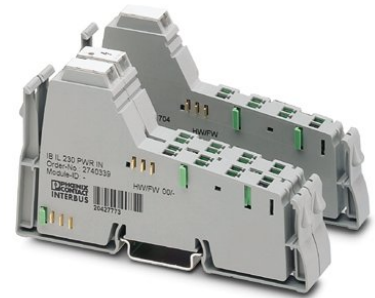


IB IL 230 PWR IN

Discontinued item


Order No.: 2740339



<http://eshop.phoenixcontact.de/phoenix/treeViewClick.do?UID=2740339>

Inline power terminal block, without accessories, without fuse, 230 V AC



Commercial data	
GTIN (EAN)	 4 017918 465643
Note	Made-to-order
sales group	K417
Pack	1 pcs.
Customs tariff	85389091
Catalog page information	Page 59 (AX-2007)

Product notes

WEEE/RoHS-compliant since:
03/15/2007



<http://www.download.phoenixcontact.com>
Please note that the data given here has been taken from the online catalog. For comprehensive information and data, please refer to the user documentation. The General Terms and Conditions of Use apply to Internet downloads.

Product description

The power and segment terminals supply the Inline station with power.

The power terminal block supplies power to the I/O circuit. This supply input allows electrical isolation from the previous voltage group.

The segment terminal makes it possible to group any number of consecutive terminals into separate segments within an Inline station.

Power and segment terminals are available both with or without integrated fusing.

The Inline terminals can be labeled using hinged labeling fields. The fields have insert cards that can be labeled individually to suit the application. Additionally, there is the proven ZBFM-6... Zack strip for labeling the terminal points.

Technical data

Interfaces

Connection method	Inline data jumper
Interface	Inline local bus

Power supply

I/O voltage	230 V AC
Peripherals voltage range	207 V AC ... 253 V AC (including all tolerances, including ripple)
Max. current consumption	8 A

General data

Weight	80 g
Width	36.6 mm
Height	119.8 mm
Depth	71.5 mm

Inline potential routing

Main circuit supply U_M	230 V AC (nominal value)
Power supply at U_M	8 A (nominal value)

Certificates / Approvals



Certification GOST

Accessories

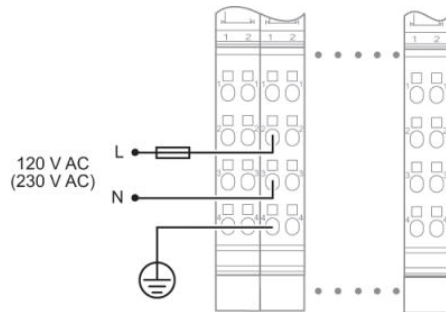
Item	Designation	Description
Marking		
0809492	ESL 62X10	Insert strip for laser printer, lettering field: 62 x 10 mm
2727501	IB IL FIELD 2	Labeling field, width: 12.2 mm

Plug/Adapter

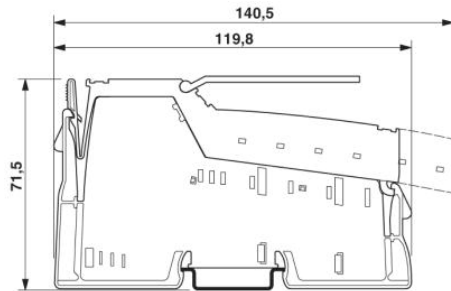
2740180	IB IL AC-PWR-IN-PLSET	Connector set, for Inline input terminal blocks with AC voltage
---------	-----------------------	---

Diagrams/Drawings

Connection diagram



Dimensioned drawing



Address

PHOENIX CONTACT Inc., USA
586 Fulling Mill Road
Middletown, PA 17057, USA
Phone (800) 888-7388
Fax (717) 944-1625
<http://www.phoenixcon.com>



© 2011 Phoenix Contact
Technical modifications reserved;