

# CT 10-9VA-120AC

Order No.: 2830485


The illustration shows version CT 10-9VA-F/PE-230 AC



<http://eshop.phoenixcontact.de/phoenix/treeViewClick.do?UID=2830485>

LSA-PLUS plug (COMTRAB CT 10) with surge protection incl. visual fault warning for nine 2-core signal circuits. Nominal voltage: 120 V AC. Design: 10 double wires



Commercial data	
GTIN (EAN)	 4 017918 106560
Note	Made-to-order
sales group	J462
Pack	1 pcs.
Customs tariff	85363010
Catalog page information	Page 120 (TT-2009)

### Product notes

WEEE/RoHS-compliant since:  
06/13/2006



<http://www.download.phoenixcontact.com>  
Please note that the data given here has been taken from the online catalog. For comprehensive information and data, please refer to the user documentation. The General Terms and Conditions of Use apply to Internet downloads.

## Technical data

General	
Housing material	PBT
Inflammability class acc. to UL 94	V2
Color	black

Standards for air and creepage distances	VDE 0110-1 IEC 60664
Total surge current (8/20) $\mu$ s	5 kA
Ambient temperature (operation)	-40 °C ... 85 °C
Mounting type	On CT-TERMIBLOCK and LSA-PLUS disconnect strip
Design	LSA-PLUS module
Degree of protection	IP20
Direction of action	Line-Line & Line-Earth Ground
Arrester can be tested with CHECKMASTER from software version:	From SW rev. 1.00
Width	111.00 mm
Height	68.50 mm
Length	22.00 mm

**Protective circuit**

IEC category	C1 C3
Nominal voltage $U_N$	120 V AC
Maximum continuous operating voltage $U_C$	200 V DC 150 V AC
Maximum continuous voltage $U_C$ (wire-ground)	200 V DC 150 V AC
Maximum continuous voltage $U_C$ (wire-GND)	200 V DC 150 V AC
Nominal current $I_N$	1.5 A
Operating effective current $I_C$ at $U_C$	$\leq 1.5$ mA $\leq 2.5$ mA
Ground conductor current $I_{PE}$	$\leq 1$ $\mu$ A
Nominal discharge surge current $I_n$ (8/20) $\mu$ s (Core-Earth)	1.5 kA
Nominal discharge surge current $I_n$ (8/20) $\mu$ s (Core-GND)	1.5 kA
Total surge current (8/20) $\mu$ s	5 kA
Max. discharge surge current $I_{max}$ (8/20) $\mu$ s maximum (Core-Earth)	5 kA (10-PE)
Max. discharge surge current $I_{max}$ (8/20) $\mu$ s maximum (Core-GND)	4.5 kA (10)
Residual voltage at $I_n$ , (conductor-ground)	$\leq 1.4$ kV

Residual voltage at In, (conductor-GND)	≤ 600 V
Fixed cable length	10 m
Energy absorption, asymmetrical	40 J
Protection level U <sub>p</sub> (Core-Earth)	≤ 1.4 kV (10-PE)
Protection level U <sub>p</sub> (Core-GND)	≤ 600 V (10)
Response time t <sub>A</sub> (Core-Core)	≤ 25 ns
Response time t <sub>A</sub> (Core-Earth)	≤ 25 ns
	≤ 100 ns
Frequency range	50 Hz ... 60 Hz
Capacity (Core-GND)	570 pF (10)
Capacity (Core-Earth)	2 pF (10-PE)
Message: Surge protection fault	Optical
Max. required back-up fuse	1.5 A (gL)

#### Connection data

Connection method	can be plugged into COMTRAB-TERMIBLOCK and LSA-PLUS disconnect and switching strips
Connection type IN	COMTRAB plug-in system
Connection type OUT	COMTRAB plug-in system

#### Connection, protective circuit

Standards/regulations	IEC 61643-21
-----------------------	--------------

#### Certificates / Approvals



Certification GOST

#### Accessories

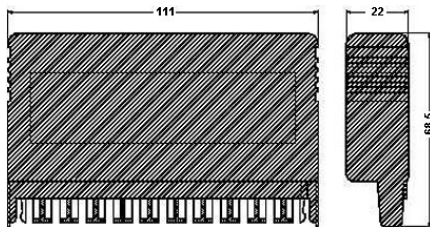
Item	Designation	Description
<b>Assembly</b>		
0441711	CT-TERMIBLOCK 10 DA	Screw termination block with disconnect contacts for accommodating protective plugs CT and CTM. Use in MCR and telecommunications systems. Design: 10 double wires

### Additional products

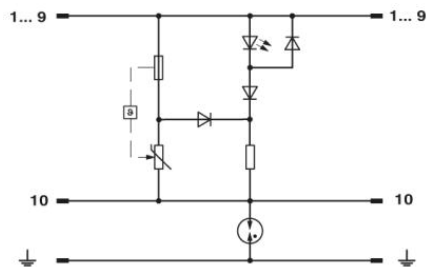
Item	Designation	Description
<b>Assembly</b>		
2839295	SSA 3-6	shield fast connections for conductor diameter 3 - 6 mm. Potential connection cable: 200 mm, black
2839512	SSA 5-10	Shield fast connection for conductor diameters 5 - 10 mm. Potential connection cable: 200 mm, black
<b>General</b>		
2765372	CT 10-MB/ 3	Mounting clip, for holding 3 disconnect or ground wire strips. Version: 10 double conductors, dimensions: A 104.5 mm, B 65 mm.
2765385	CT 10-MB/10	Mounting clip, for holding 10 disconnect or ground wire strips. Version: 10 double conductors, dimensions: A 104.5 mm, dimensions B 245.5 mm
2765356	CT 10-TL	LSA-PLUS disconnect strip to hold the CTM and CT 10 protection modules. Version: 10 double conductors, dimension A: 124 mm.
2765518	CT-KDT	Cable bush for assembly troughs, for protection of the lines guided through the laminated frame

### Diagrams/Drawings

Dimensioned drawing



Circuit diagram



**Address**

PHOENIX CONTACT Inc., USA  
586 Fulling Mill Road  
Middletown, PA 17057, USA  
Phone (800) 888-7388  
Fax (717) 944-1625  
<http://www.phoenixcon.com>



© 2011 Phoenix Contact  
Technical modifications reserved;