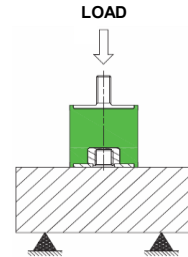
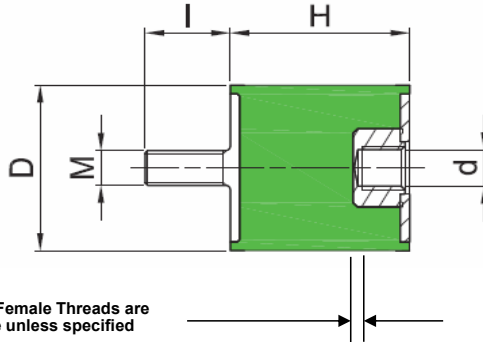
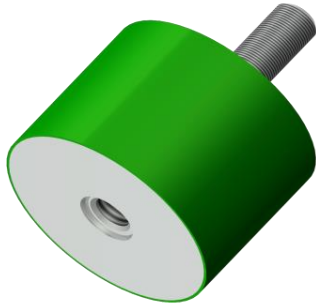


Bobbin Mounts - Type VD (Male - Female)



Note: All Female Threads are Captive unless specified

The Type VD Bobbin Mounts are designed to be used on a wide range of applications, and can be used in compression or shear.

They are manufactured from Natural Rubber in a variety of hardnesses to suit the application, and have zinc plated steel end sections with either welded or cold formed threads.

This range comes with a Male thread on one end, and a Female thread on the opposite end which is captive to avoid compromise to the integrity or functionality of the Rubber section.

** Please note - Each mount c/w 1 Nut & Washer.*

RS Ref:	Fibet Ref:	D	H	*M x I	IRHD	Stiffness (DaN/mm)	Max. Static Deflection (mm)	Maximum Stiffness (DaN)
777-3196	1008VD10-45	10	8	M4 X 10	45	4.0	1.6	6.4
720-3313	1008VD10-60	10	8	M4 X 10	60	7.3	1.6	11.7
777-3190	1413VD10-45	14	13	M4 X 10	45	7.3	2.6	19.0
237-1938	1615VD10-35	16	15	M4 X 10	35	3.0	3.0	9.0
237-1944	1615VD10-60	16	15	M4 X 10	60	8.5	3.0	25.5
777-3207	1615VD512-60	16	15	M5 X 12	60	8.5	3.0	25.5
237-1966	2015VD18-45 (Female Thread Non-Captive)	20	15	M6 X 18	45	7.8	3.0	23.4
298-3092	2015VD18-60 (Female Thread Non-Captive)	20	15	M6 X 18	60	14.6	3.0	43.8
237-1972	2020VD18-45 (Female Thread Non-Captive)	20	20	M6 X 18	45	4.5	4.0	18.0
237-1988	2020VD18-60 (Female Thread Non-Captive)	20	20	M6 X 18	60	8.4	4.0	33.6
742-6856	2025VD18-45	20	25	M6 X 18	45	3.1	5.0	15.5
720-3316	2025VD18-60	20	25	M6 X 18	60	5.6	5.0	28.0
298-3109	2515VD18-45 (Female Thread Non-Captive)	25	15	M6 X 18	45	15.4	3.0	46.2
298-3115	2515VD18-60 (Female Thread Non-Captive)	25	15	M6 X 18	60	29.2	3.0	87.6
777-3200	2522VD20-45	25	22	M8 X 20	45	8.2	4.4	36.1
298-3121	2530VD20-45	25	30	M8 X 20	45	4.4	6.0	26.4
298-3137	2530VD20-60	25	30	M8 X 20	60	8.5	6.0	51.0
720-3310	3020VD20-60	30	20	M8 X 20	60	22.4	4.0	89.6
777-3203	3025VD20-45	30	25	M8 X 20	45	8.3	5.0	41.5
237-1994	3030VD20-45	30	30	M8 X 20	45	6.0	6.0	36.0
237-2004	3030VD20-60	30	30	M8 X 20	60	11.2	6.0	67.2
298-3159	4020VD23-45	40	20	M8 X 23	45	26.3	4.0	105.2
298-3165	4020VD23-60	40	20	M8 X 23	60	49.4	4.0	197.6
237-2010	4030VD23-45	40	30	M8 X 23	45	13.1	6.0	78.6

