

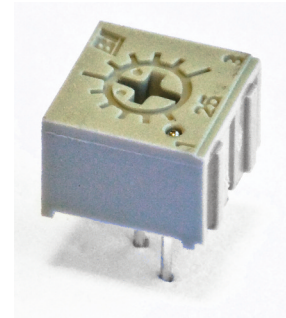
Model 25

1/4" Square

Sealed Single Turn

Thru-Hole

Cermet Trimming Potentiometer



ELECTRICAL

Standard Resistance Range	10 Ohms to 2 Megohms
Standard Resistance Tolerance	±10%
Input Voltage	300 Vdc Max. or rms not to exceed power rating
Power Rating	0.5 Watts at 70°C derating to 0 at 125°C
End Resistance	1% or 2 Ohms Max., whichever is greater
Actual Electrical Travel	210° nominal
Dielectric Strength	900 Vrms
Insulation Resistance	1,000 Megohms Min.
Resolution	Essentially infinite
Contact Resistance Variation	1% or 3 Ohms Max., whichever is greater

ENVIRONMENTAL

Seal	85°C Fluorinert® (No Leaks)
Temperature Coefficient	±100 ppm/°C
Operating Temperature Range	-55°C to +125°C
Thermal Shock	Five cycles -55°C to +125°C (2% ΔRT, 2% ΔVR)
Moisture Resistance	Ten 24 hour cycles (3% ΔRT)
Shock	6 ms sawtooth, 100 G's (1% ΔRT, 1% ΔVR)
Vibration	30 G's, 10 to 2,000 Hz (1% ΔRT, 1% ΔVR)
High Temperature Exposure	250 hours at 125°C (2% ΔRT, 2% ΔVR)
Rotational Life	200 cycles (2 Ohms or 3% ΔRT, whichever is greater)
Load Life	1,000 hours at 70°C & 0.5 Watts (3% ΔRT, 3% ΔVR)
Resistance to Solder Heat	350°C for 3 seconds or 260°C for 10 seconds (1% ΔRT)

MECHANICAL

Mechanical Stops	Solid
Stop Strength	7 oz.-in. Min. (500 g-cm)
Torque	3 oz.-in. Max. (200 g-cm)
Weight	0.02 oz. nominal (0.6 grams)

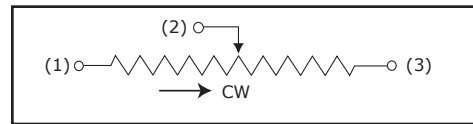
*Specifications subject to change without notice.
Fluorinert® is a registered trademark of 3M Company.*

Model 25

STANDARD RESISTANCE VALUES

10	100	1K	10K	100K	1Meg
20	200	2K	20K	200K	2Meg
50	500	5K	50K	500K	

CIRCUIT DIAGRAM



PACKAGING

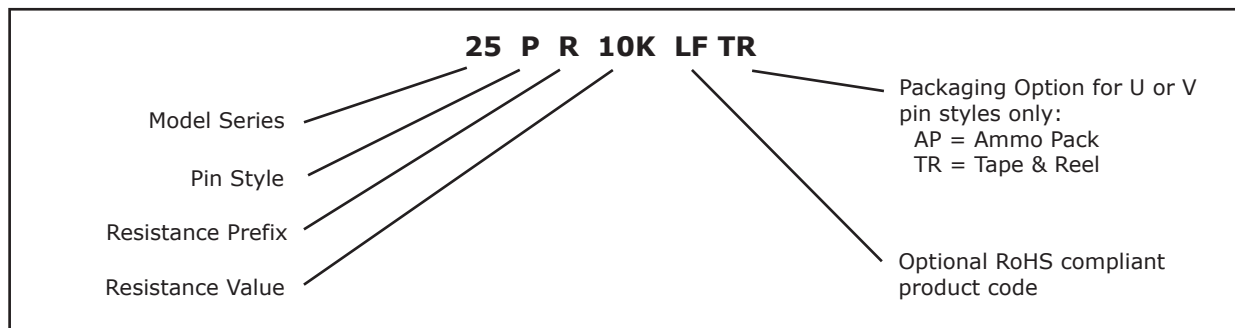
Standard (no code): Tubes. 50 units each. All units oriented with #1 pin to same side.

Option (TR code, only for U or V pin style): Tape & Reel. All units oriented with #3 pin toward direction of feed.

	Pin Style	V	U
Tape	Width =	18 mm	18 mm
	Single hole sprocket =	0.50" pitch	0.50" pitch
	Capacity =	1,000 units	750 units
Reel	Diameter =	14" (363 mm)	14" (363 mm)

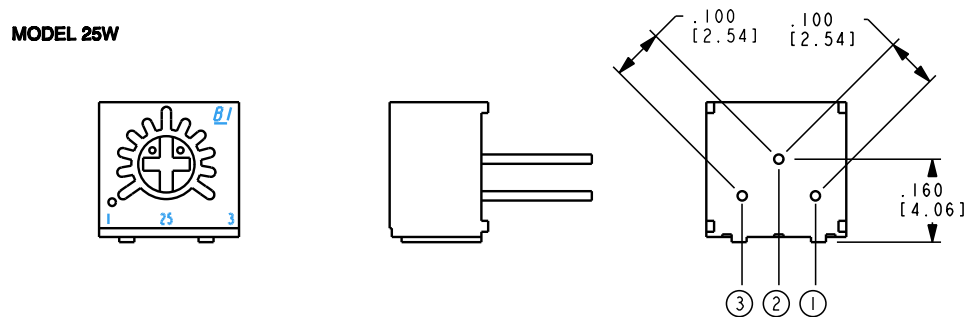
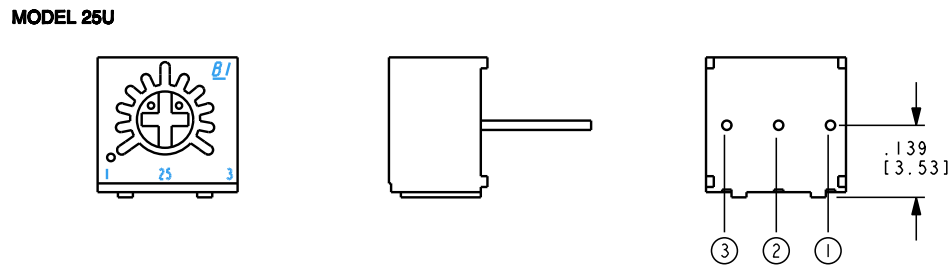
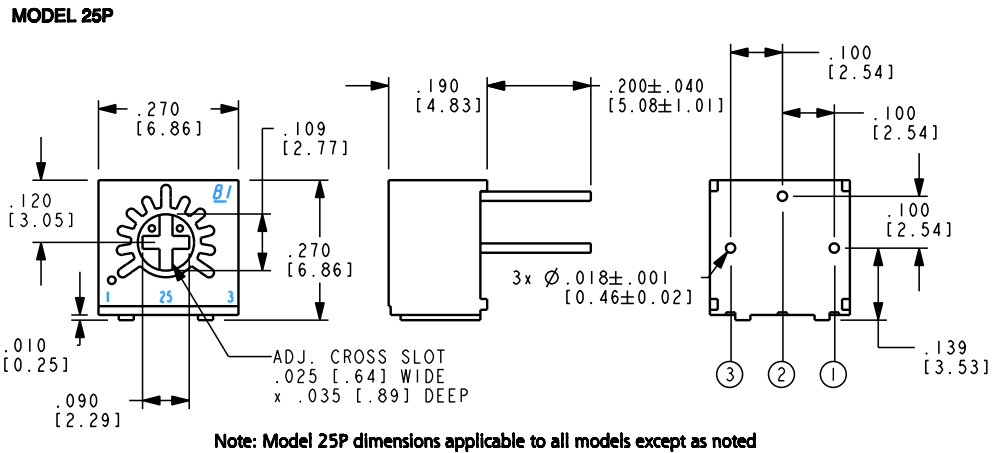
Option (AP code, only for U or V pin style): Ammo pack. Tape fold 12". Box 2.0" x 13.4" x 13.8" (50 mm x 340 mm x 350 mm)

ORDERING INFORMATION



Model 25

TOP ADJUSTMENT

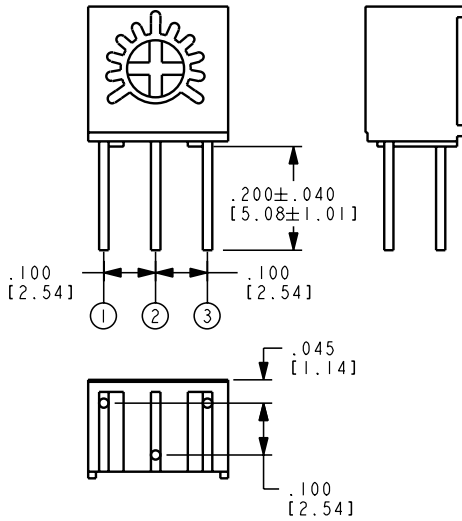


1. Dimensions in inch/mm
2. Tolerances ± 0.01 inch (0.3 mm) unless otherwise specified

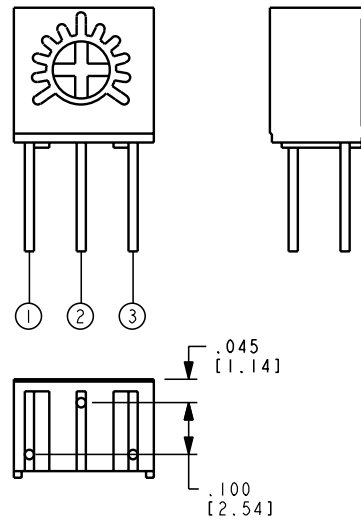
Model 25

SIDE ADJUSTMENT

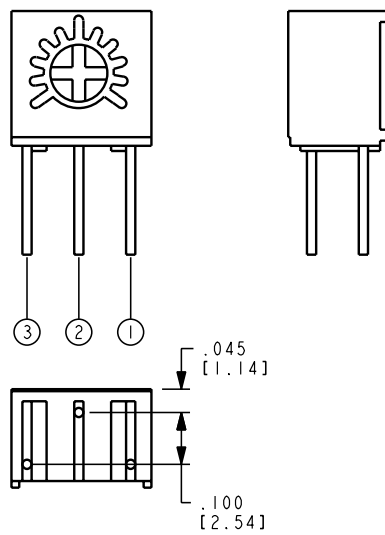
MODEL 25S



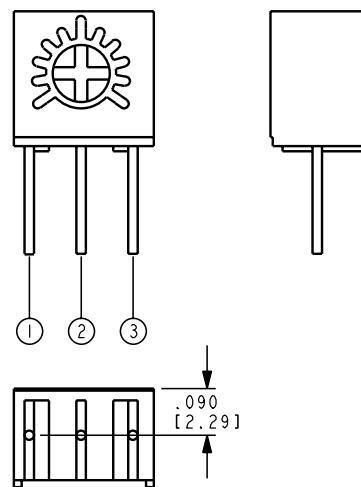
MODEL 25X



MODEL 25RX



MODEL 25V



1. Dimensions in inch/mm
2. Tolerances ± 0.01 inch (0.3 mm) unless otherwise specified

Mouser Electronics

Authorized Distributor

Click to View Pricing, Inventory, Delivery & Lifecycle Information:

TT Electronics:

[25UR5KLF](#) [25PR20KLF](#) [25PR250KLF](#) [25PR200LF](#) [25PR1MLF](#) [25PR50KLF](#) [25PR25KLF](#) [25PR1KLF](#)
[25PR200KLF](#) [25PR100LF](#) [25PR10LF](#) [25PR500LF](#) [25PR10KLF](#) [25PR500KLF](#) [25PR5KLF](#) [25PR100KLF](#) [25PR50LF](#)
[25PR2KLF](#) [25PR2MLF](#) [25PR20LF](#) [25SR10KLF](#) [25VR5KLF](#) [25WR200LF](#) [25SR500KLF](#) [25SR200KLF](#)
[25UR10LFTR](#) [25SR50LF](#) [25UR500LF](#) [25UR2MEGLFTR](#) [25WR500KLF](#) [25SR50KLF](#) [25WR200KLF](#) [25WR50LF](#)
[25SR500LF](#) [25WR10KLF](#) [25SR2MEGLF](#) [25RXR500KLF](#) [25RXR20KLF](#) [25WR100KLF](#) [25UR1MEGLFTR](#)
[25RXR100LF](#) [25UR5KLFTR](#) [25WR10LF](#) [25UR50KLFTR](#) [25XR500KLF](#) [25XR2MEGLF](#) [25UR20LFTR](#) [25SR2KLF](#)
[25UR50LFTR](#) [25WR100LF](#) [25XR200KLF](#) [25WR1MEGLF](#) [25XR1MEGLF](#) [25UR200LFTR](#) [25SR20LF](#) [25SR200LF](#)
[25UR200KLFTR](#) [25WR2MEGLF](#) [25WR50KLF](#) [25WR20KLF](#) [25RXR200LF](#) [25RXR2KLF](#) [25RXR1KLF](#) [25XR2KLF](#)
[25WR2KLF](#) [25SR1MEGLF](#) [25UR100LFTR](#) [25WR500LF](#) [25RXR10LF](#) [25SR10LF](#) [25RXR50LF](#) [25WR25KLF](#)
[25XR50KLF](#) [25SR100KLF](#) [25UR10KLFTR](#) [25XR20KLF](#) [25UR500LFTR](#) [25WR20LF](#) [25RXR200KLF](#) [25XR200LF](#)
[25RXR10KLF](#) [25WR5KLF](#) [25XR10LF](#) [25XR50LF](#) [25XR20LF](#) [25UR1KLFTR](#) [25RXR2MEGLF](#) [25RXR20LF](#)
[25XR100KLF](#) [25XR1KLF](#) [25XR100LF](#) [25RXR1MEGLF](#) [25RXR500LF](#) [25SR1KLF](#) [25VR1MEGLFTR](#) [25VR50LFTR](#)
[25XR500LF](#) [25UR20KLFTR](#) [25VR10KLF](#) [25WR1KLF](#)