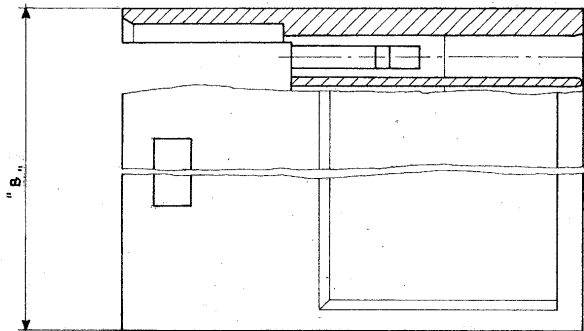
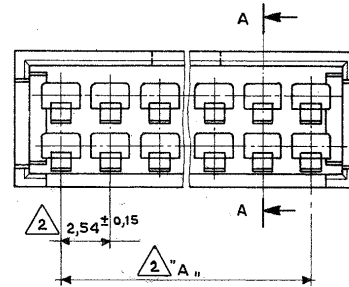
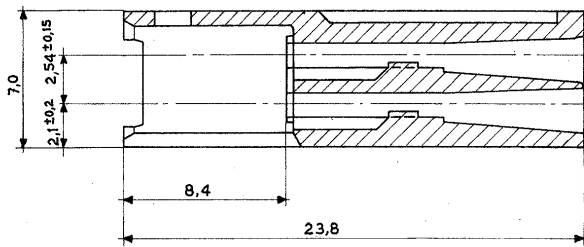


SCALA NON IMPEGNATIVA
(DO NOT SCALE)
DIMENSIONI IN mm
DIMENSIONS IN mm

METRIC

PROIEZIONE EUROPEA
(EUROPEAN PROJECTION)

Sezione A-A
(Section)



Note: (Notes)

- 1 Noryl (1117) colore Nero (Black Colour).
- 2 Tolleranza non Cumulativa. (Non-Cumulative Tolerance).
- 3 OBSOLETO

N° Pos.	Part Number	Dim. "A"	Dim. "B"	Mat.
22	280642	53,34	58,2	1
15	280641	35,56	40,4	1
12	280640	27,94	32,8	1
9	280639	20,32	25,1	1
8	280638	17,78	22,6	1
4	280637	7,62	12,5	1

FINITURA - COLORE (FINISH - COLOUR)	MATERIALE (MATERIAL)	NUMERO (PART NUMBER)	
CUSTOMER DWG. FOR REFERENCE ONLY		DISEGNO PER CLIENTE SOLO PER RIFERIMENTO	
THIS DRAWING IS UNPUBLISHED		RELEASE FOR PUBLICATION	
TOLLERANZE SE NON DIVERSAMENTE SPECIFICATE (TOLERANCES UNLESS OTHERWISE SPECIFIED)	DIAM. ISOLANTE (INS. DIA. RANGE)	RANGO FILO (WIRE RANGE)	SCALA (SCALE)
± 0,3			5:1
ANGOLI (ANGLES) ± 2°	STE TE Connectivity		
DIS. (DIA.) Bassano 29.9.86	DESCRIZIONE (DESCRIPTION) AMP MODU II Pin Housing, Double Row, Crimped Snap-In.		
COMP. (COMP.)	LOC. SIZE	NUMERO (DWG. NO.)	REV. (REV.)
		280637	J1
J1 REVISED PER ECO-11-005294	RK	1 A3 C (Master Dwg.)	FOLIO (SHEET) DI 1 (OF 1)

DISEGNO PER CLIENTE

1 2 3 4 5 6 7 8