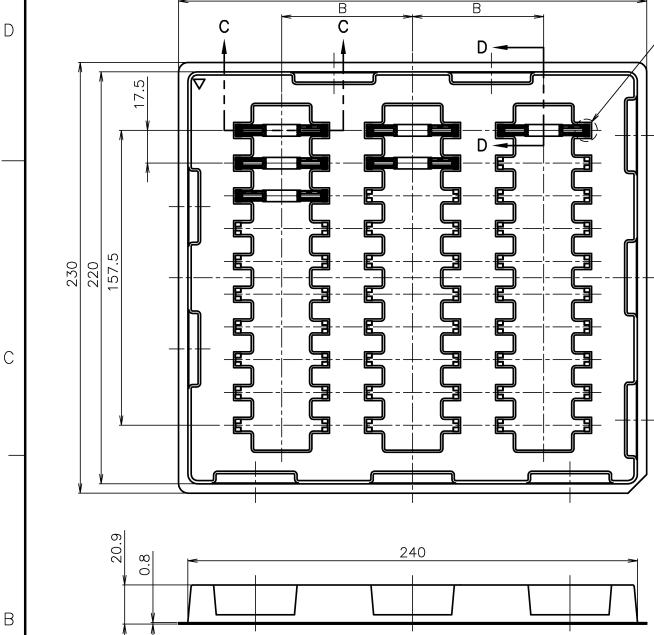
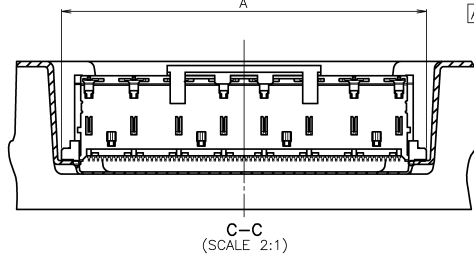


THIS DRAWING IS UNPUBLISHED. RELEASED FOR PUBLICATION OCT. 2008.
 (C) COPYRIGHT 2008 BY TYCO ELECTRONICS CORPORATION. ALL RIGHTS RESERVED.

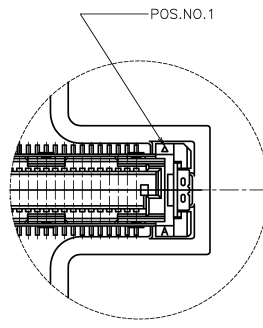
LOC	DIST	REVISIONS			
P	LTR	DESCRIPTION	DATE	OWN	APVD
A	RELEASED		21OCT2008	Y.O	T.F



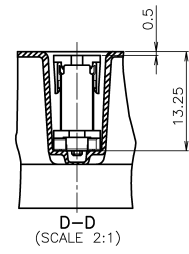
SEE DETAIL E



AS SHOWN:TYPE-1

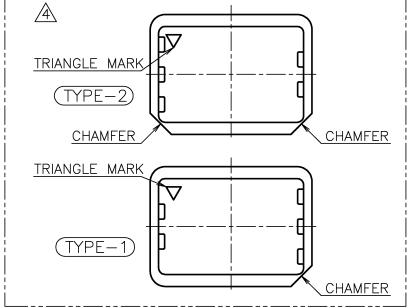


DETAIL E (SCALE 4:1)



D-D (SCALE 2:1)

△ TRAY TYPE-1 AND TYPE-2 MUST BE PILED UP BY TURNS. (REFER TO PACKING SPECIFICATIONS)



GENERAL TOLERANCE	
公差	公差
10 \geq	± 0.2
30 \geq	± 0.25
100 \geq	± 0.3
ANGLES: $\pm 3'$	

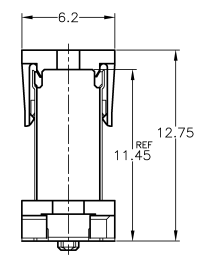
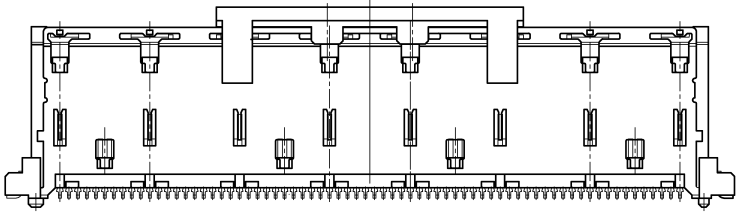
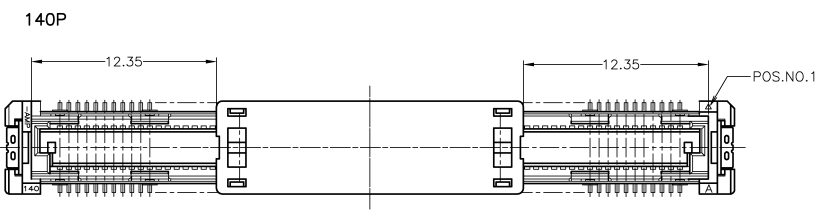
THIS DRAWING IS A CONTROLLED DOCUMENT.

DIMENSIONS:	TOLERANCES UNLESS OTHERWISE SPECIFIED:
單位: 桁	公差
mm	公差
0 PLC	\pm
1 PLC	\pm
2 PLC	\pm
3 PLC	\pm
4 PLC	\pm
ANGLES	\pm
MATERIAL	FINISH
材料	仕上

NON SEALANT	AVAILABLE	3	30	70	48.7	140	2069478-1
SEALANT	TOOLING STATUS	LOW	QTY	B	A	POS.	PART NO.
DW: Y.OKOSHI 21OCT2008		Tyco Electronics Corporation					
CHK: S.KAJINUMA 21OCT2008		Kawasaki, Japan					
APVD: T.FUTATSUGI 21OCT2008		NAME					
PRODUCT SPEC: 108-60047		SOFT TRAY ASSY					
APPLICATION SPEC: 114-5255		FH 0.6BTB CONNECTOR					
WEIGHT:		PLUG 12H W/G-PLATE AND CAP					
CUSTOMER DRAWING		SIZE: A3		CAGE CODE: 00779		DRAWING NO: 2069478	
		SCALE: 1:2		SHEET: 1 of 3		REV: A	

THIS DRAWING IS UNPUBLISHED. RELEASED FOR PUBLICATION OCT. 2008.
 © COPYRIGHT 2008 BY TYCO ELECTRONICS CORPORATION. ALL RIGHTS RESERVED.

LOC	DIST	REVISIONS					
J		P	LTR	DESCRIPTION	DATE	OWN	APVD
		-		SEE SHEET 1	-	-	-



THIS DRAWING IS A CONTROLLED DOCUMENT.		DWN	Tyco Electronics Corporation Kawasaki, Japan	
DIMENSIONS: 單位: 毫米 mm		CHK	NAME 名稱	
TOLERANCES UNLESS OTHERWISE SPECIFIED: 一般公差		APVD	SOFT TRAY ASSY FH 0.6BTB CONNECTOR PLUG 12H W/G-PLATE AND CAP	
0 PLC ± - 1 PLC ± - 2 PLC ± - 3 PLC ± - 4 PLC ± - ANGLES ± -		PRODUCT SPEC 製品規格	SIZE	CAGE CODE
MATERIAL 材料		APPLICATION SPEC 取付運用規格	A3	00779
FINISH 仕上		WEIGHT	DRAWING NO 番号	RESTRICTED TO
CUSTOMER DRAWING		SCALE 尺度	2069478	
		SHEET	2	of 3
		REV		A

AMP 1470-19 REV 31MAR2000

