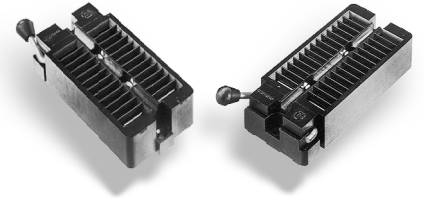




# Series 55 Universal Zero-Insertion-Force DIP Test Socket

## FEATURES

- Accepts Devices on 0.300 to 0.600 [7.62 to 15.24] Centers
- All Pin Count Sockets go into PCB with either 0.300 or 0.600 [7.62 or 15.24] Centers
- Contacts Normally-closed to Eliminate Dependence on Plastic to Sustain Contact Integrity
- Socket Handle Configured with Closed Contacts (on) when in the Up or Down Position, and Mounted on the Right- or Left-hand Side
- Sockets may be Soldered into PCBs or Plugged into Any Socket or Receptacle



## GENERAL SPECIFICATIONS

- **SOCKET BODY:** Black UL 94V-0 glass-filled Polyphenylene Sulfide (PPS)
- **HANDLE:** Stainless Steel
- **HANDLE KNOB:** Brass 360, 1/2-hard
- **CONTACTS:** BeCu 172 per QQ-C-533 **-OR-** Spinodal Alloy
- **ALL BeCu CONTACTS:** 50 $\mu$  [1.27 $\mu$ ] min. Ni under plate per QQ-N-290, over plated with 200 $\mu$  [5.08 $\mu$ ] min. matte Sn per ASTM B545-97; **-OR-** 200 $\mu$  [5.08 $\mu$ ] min. 90/10 Sn/Pb per MIL-T-10727-11 10 $\mu$  [0.25 $\mu$ ] min. Au per MIL-G-45204
- **SPINODAL CONTACT PLATING:** 50 $\mu$  [1.27 $\mu$ ] min. NiB
- **HIGH-TEMPERATURE BeNi CONTACT PLATING:** 50 $\mu$  [1.27 $\mu$ ] NiB
- **CONTACT CURRENT RATING:** 1 amp
- **INSULATION RESISTANCE:** 1000 M $\Omega$  min.
- **DIELECTRIC WITHSTANDING VOLTAGE:** 1000 VAC
- **LIFE CYCLE:** 25,000 to 50,000 cycles
- **OPERATING TEMPERATURE:** -85°F to 221°F [-65°C to 105°C] Sn plating; 302°F [150°C] Au plating; 392°F [200°C] NiB plating
- **RETENTION FORCE (closed):** 55g/pin based on a 0.020 [0.51] dia. test lead
- **ACCEPTS LEADS:** 0.015-0.045 [0.38-1.14] wide, 0.110-0.280 [2.79-7.11] long

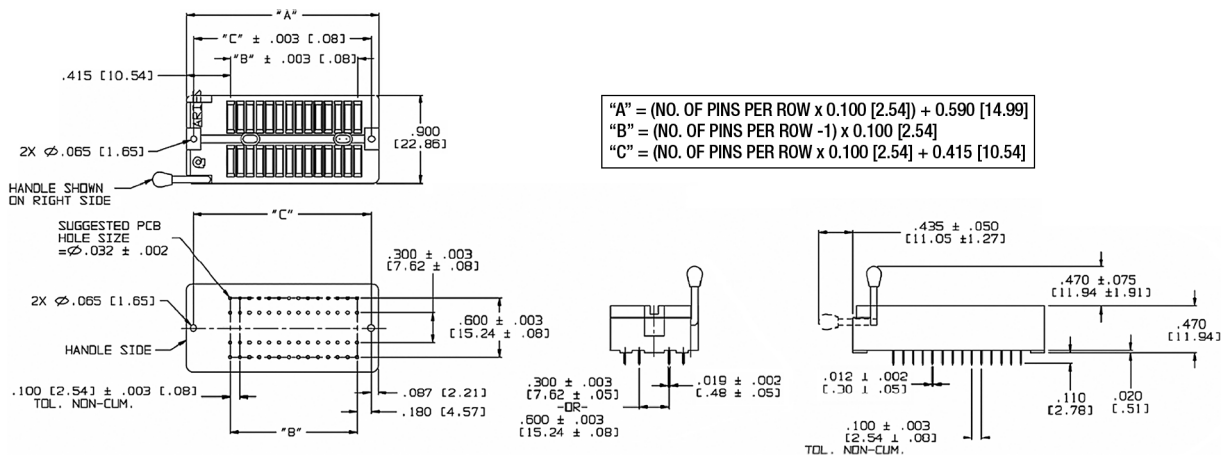
## ORDERING INFORMATION

**XX-X55X-X X**

- Plating**
  - 0 = Sn over Ni
  - OTL = Sn/Pb over Ni
  - 1 = Au over Ni
  - 6 = NiB (Spinodal only)
- Termination**
  - 1 = Solder Pin Tail
- Handle Options**
  - 1 = Left up is closed
  - 2 = Right up is closed
  - 3 = Left down is closed
  - 4 = Right down is closed (std)
- Row-to-Row Spacing (btm)**
  - 3 = 0.300 [7.62]
  - 6 = 0.600 [15.24]
- No. of Pins**
  - 24, 28, 32, 36, 40, 42, 44, 48

## MOUNTING CONSIDERATIONS

- See Socket Footprint



ALL DIMENSIONS: INCHES [MILLIMETERS]  
 ALL TOLERANCES:  $\pm 0.005 [0.13]$  UNLESS OTHERWISE SPECIFIED  
 FOR TEST SOCKET RECEPTACLES, SEE [DATA SHEET 10003](#)  
 DO NOT USE THIS SOCKET IN A BURN-IN OVEN WITH CONTACTS IN OPEN POSITION, AS IT WILL DAMAGE THE SOCKET  
 CONSULT FACTORY FOR OTHER SIZES AND CONFIGURATIONS

CUSTOMIZATION: ARIES SPECIALIZES IN CUSTOM DESIGN AND PRODUCTION. SPECIAL MATERIALS, PLATINGS, SIZES, AND CONFIGURATIONS CAN BE FURNISHED, DEPENDING ON QUANTITY.  
 ARIES RESERVES THE RIGHT TO CHANGE PRODUCT GENERAL SPECIFICATIONS WITHOUT NOTICE  
 PRINTOUTS OF THIS DOCUMENT MAY BE OUT-OF-DATE AND SHOULD BE CONSIDERED UNCONTROLLED



2609 Bartram Road • Bristol, PA 19007-6810 USA  
 TEL 215-781-9956 • FAX 215-781-9845  
 WWW.ARIESELEC.COM • INFO@ARIESELEC.COM



10001  
 Rev. 1.9  
 1 of 1

# Mouser Electronics

Authorized Distributor

Click to View Pricing, Inventory, Delivery & Lifecycle Information:

## [Aries Electronics:](#)

[28-6554-10](#) [28-6554-11](#) [24-6554-11](#) [36-6554-11](#) [32-6554-11](#) [32-6554-10](#) [32-3554-11](#) [28-3553-11](#) [48-6554-11](#)  
[40-6554-10](#) [40-6554-16](#) [48-6554-10](#) [44-6554-10](#) [40-6554-11](#) [24-6554-16](#) [36-6554-16](#) [36-3554-16](#) [36-6554-10](#) [36-](#)  
[3554-10](#) [36-3554-11](#) [32-3554-16](#) [32-6554-16](#) [32-3554-10](#) [42-6574-11](#) [42-3574-16](#) [42-6574-18](#) [42-6574-10](#) [42-](#)  
[3574-18](#) [42-3574-10](#) [24-3554-16](#) [24-3554-10](#) [28-3554-16](#) [28-6554-16](#) [28-3554-10](#) [28-3554-11](#) [28-3570-11](#) [42-](#)  
[6573-10](#) [42-3573-10](#) [42-3573-16](#) [42-6573-16](#) [42-6573-11](#) [42-6572-16](#) [42-3572-16](#) [42-6572-10](#) [42-3572-10](#) [42-](#)  
[6572-11](#) [28-3571-11](#) [42-3554-11](#) [42-6554-11](#) [42-6554-16](#) [42-3554-16](#) [42-6554-10](#) [42-3554-10](#) [48-3554-11](#) [48-](#)  
[3554-16](#) [48-6554-16](#) [48-3554-10](#) [40-3554-11](#) [40-3554-10](#) [40-3554-16](#) [44-3554-10](#) [44-6554-16](#) [44-3554-16](#) [44-](#)  
[6554-11](#) [28-3574-11](#) [42-6571-11](#) [42-3571-10](#) [42-6571-10](#) [42-6571-16](#) [42-3571-16](#) [42-6570-10](#) [42-3570-10](#) [42-](#)  
[3570-16](#) [42-6570-16](#) [42-6570-11](#) [28-3575-11](#) [36-3552-10](#) [36-3552-16](#) [36-3552-11](#) [28-3572-11](#) [28-3573-11](#) [24-](#)  
[6554-10](#) [24-3554-11](#) [42-6575-18](#) [42-6575-10](#) [42-3575-18](#) [42-3575-10](#) [42-3575-16](#) [42-6575-16](#) [42-6575-11](#) [42-](#)  
[3575-11](#) [48-3552-10](#) [24-6551-16](#) [28-6553-11](#) [24-6552-16](#) [24-6553-16](#) [32-3552-11](#) [36-3551-10](#) [32-3551-11](#) [36-](#)  
[3553-10](#)