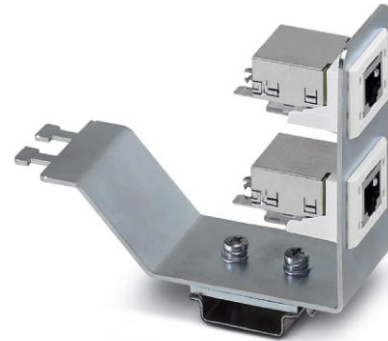



**FL PF 2TX CAT 6**

Order No.: 2891068

<http://eshop.phoenixcontact.de/phoenix/treeViewClick.do?UID=2891068>

Patch field with two RJ45 CAT6 network connections

**Ethernet****Commercial data**

GTIN (EAN)	 4 046356 084383
sales group	K009
Pack	1 pcs.
Customs tariff	85366990
Catalog page information	Page 110 (AX-2011)

**Product notes**WEEE/RoHS-compliant since:  
11/26/2007

<http://www.download.phoenixcontact.com>  
Please note that the data given here has been taken from the online catalog. For comprehensive information and data, please refer to the user documentation. The General Terms and Conditions of Use apply to Internet downloads.

**Technical data****Interfaces**

Interface 1	Ethernet (RJ45)
No. of ports	2
Connection method	RJ45 CAT6

**Conformity with EMC directives**

Developed in acc. with standard	ISO/IEC 11801, EN 50173, TIA/EIA 568B and IEC 60603-7
---------------------------------	---

**General data**

Width	38 mm
Height	112 mm
Depth	88 mm
Weight	125 g
Degree of protection	IP20
Ambient temperature (operation)	0 °C ... 55 °C (no condensation)
Ambient temperature (storage/transport)	-20 °C ... 70 °C
Permissible humidity (operation)	10 % ... 95 % (no condensation)
Permissible humidity (storage/transport)	10 % ... 95 % (no condensation)
Housing material	Metal

**Connection data**

Conductor cross-section	0.2 mm <sup>2</sup> ... 0.32 mm <sup>2</sup>
Connection cross-section AWG	24 ... 22
Rated voltage (III/3)	50 V
Rated surge voltage	≥ 1 kV
Rated current	1 A

**Accessories**

Item	Designation	Description
<b>Cable/conductor</b>		
2832250	FL CAT5 PATCH 0,3	Patch cable, CAT5, assembled, 0.3 m
2832263	FL CAT5 PATCH 0,5	Patch cable, CAT5, assembled, 0.5 m
2832276	FL CAT5 PATCH 1,0	Patch cable, CAT5, assembled, 1.0 m
2832221	FL CAT5 PATCH 1,5	Patch cable, CAT5, assembled, 1.5 m
2832629	FL CAT5 PATCH 10,0	Patch cable, CAT5, assembled, 10.0 m
2832289	FL CAT5 PATCH 2,0	Patch cable, CAT5, assembled, 2.0 m
2832292	FL CAT5 PATCH 3,0	Patch cable, CAT5, assembled, 3.0 m
2832580	FL CAT5 PATCH 5,0	Patch cable, CAT5, assembled, 5.0 m
2832616	FL CAT5 PATCH 7,5	Patch cable, CAT5, assembled, 7.5 m
<b>Female insert</b>		
1654358	VS-SCRJ-GOF-KU	SCRJ coupling insert, duplex, for VS-PP-19-1HE-16-F patch panel and VS-TO...F...terminal outlets and VS-SI-FP-2F front plate, can be used for glass multi-mode, HCS and polymer fiber types

<b>General</b>		
2891107	FL DUST CVR BK	Dust protection with color marking for SFN switch and angled patch connector, black
2891301	FL DUST CVR BN	Dust protection with color marking for SFN switch and angled patch connector, brown
2891204	FL DUST CVR BU	Dust protection with color marking for SFN switch and angled patch connector, blue
2891602	FL DUST CVR GN	Dust protection with color marking for SFN switch and angled patch connector, green
2891505	FL DUST CVR GY	Dust protection with color marking for SFN switch and angled patch connector, gray
2891709	FL DUST CVR RD	Dust protection with color marking for SFN switch and angled patch connector, red
2891806	FL DUST CVR VT	Dust protection with color marking for SFN switch and angled patch connector, purple
2891903	FL DUST CVR WH	Dust protection with color marking for SFN switch and angled patch connector, white
2891408	FL DUST CVR YE	Dust protection with color marking for SFN switch and angled patch connector, yellow
2891628	FL IP 54 FLANGE BU	IP54 protection with color marking for SFN switch and angled patch connector, blue
2891822	FL IP 54 FLANGE GN	IP54 protection with color marking for SFN switch and angled patch connector, green
2891932	FL IP 54 FLANGE RD	IP54 protection with color marking for SFN switch and angled patch connector, red
2891961	FL IP 54 FLANGE WH	IP54 protection with color marking for SFN switch and angled patch connector, white
2891725	FL IP 54 FLANGE YE	IP54 protection with color marking for SFN switch and angled patch connector, yellow
2891440	FL IP 54 SPOUT	Accessories, IP54 protection for patch cable, use with FL IP54 FLANGE ...
2891615	FL PLUG GUARD GN	Security frame for SFN switch and patch fields, green
2891327	FL PLUG GUARD KEY	Key for security frame, SFN switch and patch fields
2891712	FL PLUG GUARD RD	Security frame for SFN switch and patch fields, red
2891819	FL PLUG GUARD WH	Security frame for SFN switch and patch fields, white
2891220	FL PORT GUARD	Locking element and key for security frame

**Address**

PHOENIX CONTACT Inc., USA  
586 Fulling Mill Road  
Middletown, PA 17057, USA  
Phone (800) 888-7388  
Fax (717) 944-1625  
<http://www.phoenixcon.com>



© 2011 Phoenix Contact  
Technical modifications reserved;