

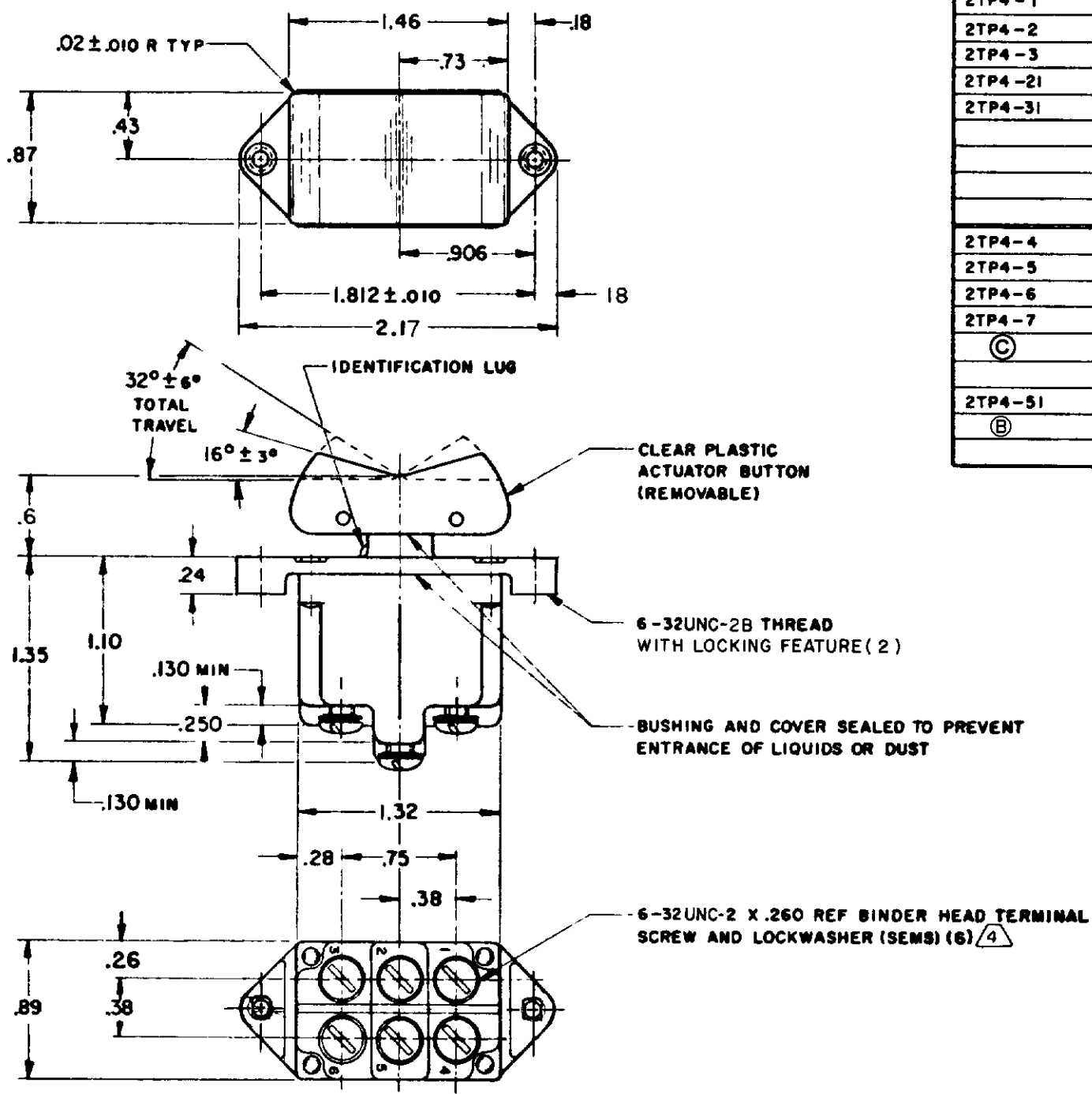
CATALOG LISTING  
**2TP4 SERIES CHART 1**  
 PAGE 1 OF 1  
**M**  
 ISSUE 4  
 REVISIONS  
 A CO-94414 G J W 11 OCT 99  
 B CO-95303 C S L 15 NOV 99  
 C 203709 C S L 10 SEP 01  
 DRAWN  
 RASTER  
 FO 50378 003  
 J A F 21 JUN 94  
 CHECK KAG 7 JUL 94  
 CHECK  
 RELEASE NO. CO-78497  
 REPLACES 2TP4 SERIES

MICRO SWITCH  
 SWITCH-TOGGLE  
 ABOVE PANEL MOUNT  
 2TP4 SERIES  
 CHART 1  
 CATALOG LISTING  
 FED. MFR CODE 91929

CAT. LIST.	CIRCUIT WITH BUTTON IN		
	OPPOSITE LUG (2-3,5-6)	CENTER (1-2,4-5)	LUG SIDE (1-2,4-5)
2TP4-1	ON	OFF	ON
2TP4-2	ON	NONE	OFF
2TP4-3	ON	NONE	ON
2TP4-2I	ON	OFF	NONE
2TP4-3I	ON	ON	NONE
2TP4-4	ON	NONE	MOM OFF
2TP4-5	ON	OFF	MOM ON
2TP4-6	OFF	NONE	MOM ON
2TP4-7	MOM ON	OFF	MOM ON
Ⓒ	ON	NONE	MOM ON
2TP4-5I	MOM ON	ON	NONE
Ⓑ	NONE	OFF	MOM ON

15A-125, 250 OR 277 VAC  
 1/2HP-125VAC; 1HP-250, 277VAC  
 5A-125VAC "L" CODE L191  
**UL @ CE**

10A-125, 250, 277 VAC  
 1/4HP-125VAC; 1/2HP-250, 277VAC  
 3A-125VAC "L" CODE L192  
**UL @ CE**



THIS DRAWING COVERS A PROPRIETARY ITEM AND IS THE PROPERTY OF MICRO SWITCH A DIVISION OF MINNEAPOLIS-HONEYWELL REGULATOR CO THIS DRAWING IS NOT TO BE COPIED OR USED WITHOUT THE APPROVAL OF MICRO SWITCH

CHARACTERISTICS	ELECTRICAL DATA		SCALE FULL
	CONTACT ARRANGEMENT	BREAK DISTANCE	DO NOT SCALE PRINT
			UNLESS OTHERWISE SPECIFIED DIMENSIONS ARE IN INCHES
			<b>TOLERANCES ARE:</b>
			ONE PLACE (.0) ± .030
			TWO PLACE (.00) ± .015
			THREE PLACE (.000) ± .005
			ANGLES ±
			WEIGHT .13 LB EST

- NOTES
- 1 - MICRO SWITCH CATALOG LISTING MARKED ON SIDE OF SWITCH
  - 2 - APPLIES ONLY TO "ON" AND "MOMENTARY ON" POSITIONS
  - 3 - THESE SWITCHES WILL WITHSTAND TEMPERATURE OF 160° F
  - 4 - SCREWS FURNISHED UNASSEMBLED