

**MICRO SWITCH**FREEPORT, ILLINOIS, U S A
A DIVISION OF HONEYWELL

FED. MFG. CODE 91929

SWITCH-BASIC

CATALOG LISTING

2HM1-6**2HM1-6**

PAGE 1 OF 1

MDRAWING
NUMBER

10

ISSUE

REPLACES

RELEASE NO. PR-8633

CHECK

3 MAY 77

CHECK

3 MAY 70

CHECK

3 MAY 70

CHECK

3 MAY 70

CHECK

3 MAY 70

CHECK

3 MAY 70

CHECK

3 MAY 70

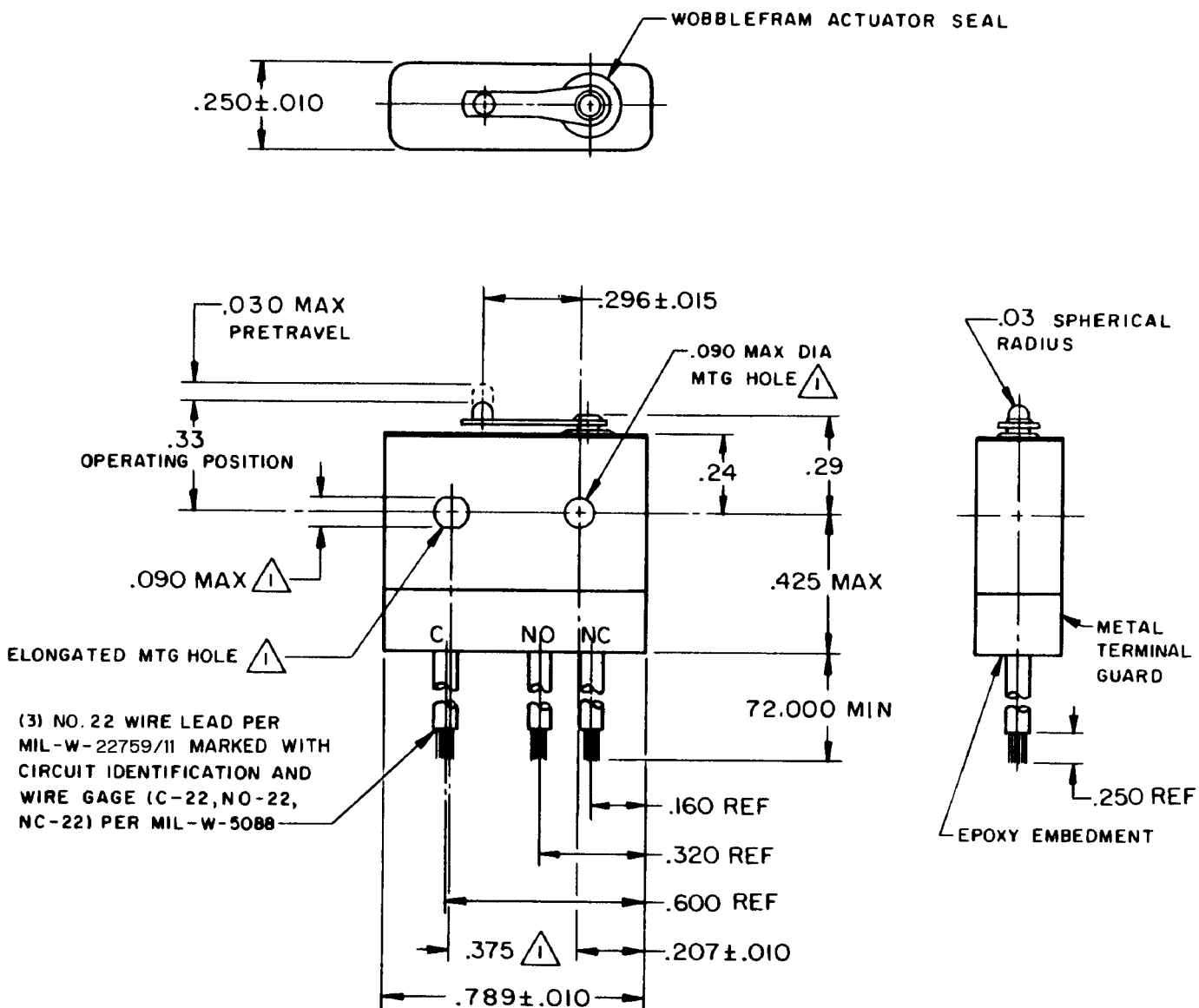
CHECK

FORMTEK

FO-50378

DRAWN

M B F 1 MAY 67



(3) NO. 22 WIRE LEAD PER MIL-W-22759/11 MARKED WITH CIRCUIT IDENTIFICATION AND WIRE GAGE (C-22, NO-22, NC-22) PER MIL-W-5088

NOTES

- 1 MOUNTING HOLES WILL ACCEPT PINS OR SCREWS OF $.087 \text{ MAX DIA}$ ON $.375 \pm .002$ CENTERS
- 2 - FOR USE IN TEMPERATURE RANGE -85°F TO $+250^{\circ}\text{F}$ (DOWN TO -300°F IF WIRE LEADS ARE NOT FLEXED)
- 3 - HERMETICALLY SEALED (METAL-TO-METAL, GLASS-TO-METAL)
- 4 - ALL EXPOSED PARTS ARE OF CORROSION RESISTANT MATERIALS
- 5 WEIGHT OF SWITCH ONLY IS 0.22 OZ MAX. WEIGHT OF CONDUCTOR GROUP ONLY IS 0.20 OZ MAX PER FOOT
- 6 - DO NOT APPLY MORE THAN 1 1/2 INCH LB OF TORQUE WHEN TIGHTENING MOUNTING SCREWS

THIS DRAWING COVERS A PROPRIETARY ITEM AND IS THE PROPERTY OF MICRO SWITCH, A DIVISION OF HONEYWELL. THIS DRAWING IS NOT TO BE COPIED OR USED WITHOUT THE APPROVAL OF MICRO SWITCH.

CHARACTERISTICS

OPERATING FORCE — — — — 7 OZ MAX

RELEASE FORCE — — — — 1 OZ MIN

DIFFERENTIAL TRAVEL — — — .006 MAX

OVERTRAVEL — — — — .003 MIN

ELECTRICAL DATACONTACT ARRANGEMENT
S P D TLINE
VOLTAGEINDUCTIVE
LOADRESISTIVE
LOAD115 VAC
(400 CYCLE)

3 AMP

5 AMP

SCALE 2 TO 1

DO NOT SCALE PRINT

UNLESS OTHERWISE
NOTED

DIMENSIONS ARE IN INCHES

TOLERANCES ARE:

ONE PLACE	(.0)	$\pm .030$
TWO PLACE	(.00)	$\pm .015$
THREE PLACE	(.000)	$\pm .005$
ANGLES		\pm

WEIGHT Δ

Mouser Electronics

Authorized Distributor

Click to View Pricing, Inventory, Delivery & Lifecycle Information:

[Honeywell:](#)

[2HM1-6](#)