

MICRO SWITCH
a Honeywell Division
FED. MFG. CODE 91929

**BRIDGE PRESSURE
SENSOR**

CATALOG LISTING
136PC15G SERIES
CHART 1

THIS DRAWING COVERS A PROPRIETARY ITEM AND IS THE PROPERTY OF MICRO SWITCH, A DIVISION OF HONEYWELL. THIS DRAWING IS NOT TO BE COPIED OR USED WITHOUT THE APPROVAL OF MICRO SWITCH

CATALOG LISTING	TERMINAL STYLE
136PC15G1	1 / 4
136PC15G2	2 / 4

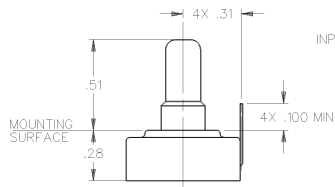
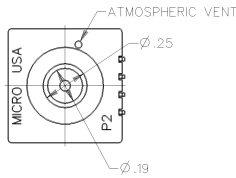
GENERAL OPERATING CHARACTERISTICS	
PRESSURE RANGE	0 TO 775 mmHg (0 TO 15 PSIG)
OVERPRESSURE	2325 mmHg (45 PSIG)
TEMPERATURE RANGES	
STORAGE	-55°C TO +125°C
OPERATE	-40°C TO +85°C
COMPENSATED	0°C TO +50°C
SUPPLY VOLTAGE	16 VDC MAX
INPUT RESISTANCE	6800 OHM TYP

ELECTRICAL PERFORMANCE AT 10.00 ± 0.01 VDC SUPPLY AND +25°C

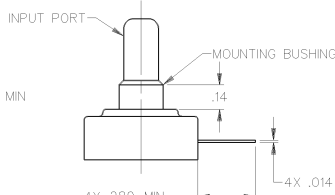
NULL OFFSET	0 ± 1 mV (AT 0 PSII)
F.S.O. / 3	100 ± 15 mV (0 TO 15 PSII)
LINEARITY (BFSL)	
INPUT < VENT	±1.25% F.S.O. MAX / 3
INPUT > VENT	±2.5% F.S.O. MAX / 3
HYSTERESIS & REPEATABILITY	±.15% F.S.O. TYP / 3

TEMPERATURE ERROR (25°C TO 0°C OR +25°C TO +50°C)

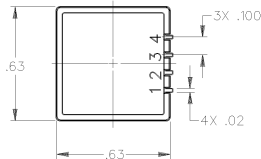
NULL SHIFT	±4 mV MAX
SENSITIVITY SHIFT	± 3.0% F.S.O. MAX / 3



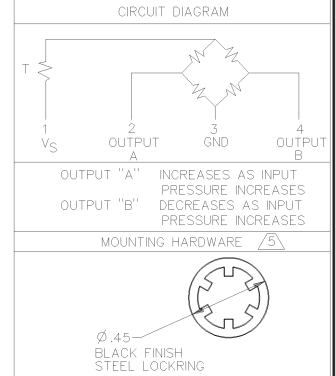
STYLE 1



STYLE 2



- NOTES
 1 - TERMINALS ARE PLATED FOR SOLDERING
 2 - LIMIT SOLDERING TO 315°C MAX FOR 10 SECONDS MAX
 3 - F.S.O. IS THE ALGEBRAIC DIFFERENCE BETWEEN THE OUTPUT END POINTS (NULL AND FULL PRESSURE)
 4 - INPUT MEDIA LIMITED ONLY TO THOSE MEDIA THAT WILL NOT ATTACK POLYESTER, SILICON, OR SILICONE BASED ADHESIVE
 5 - ONE LOCKRING FURNISHED UNASSEMBLED WITH EACH UNIT



THIRD ANGLE PROJECTION

SCALE 2:1

DO NOT SCALE PRINT

UNLESS OTHERWISE SPECIFIED TOLERANCES ARE

ONE PLACE (.01)	±.030
TWO PLACE (.00)	±.015
THREE PLACE (.000)	±.005
ANGLES	±
WEIGHT	

CATALOG LISTING 136PC15G SERIES CHART 1
 ISSUE 14
 REVISIONS
 A 10-27-52
 B 1-11-53
 C 4-12-54
 DDW/CAD
 J. A. F. 16 JUN 84
 ANSI Y14.5M-1982 APPLIES

136PC15G SERIES CHART 1

MICRO SWITCH
a Honeywell Division
FED. MFG. CODE 91929

**BRIDGE PRESSURE
SENSOR**

CATALOG LISTING
136PC15G SERIES CHART 1

CATALOG LISTING	TERMINAL STYLE
136PC15G1	1 / 4
136PC15G2	2 / 4

THIS DRAWING COVERS A PROPRIETARY ITEM AND IS THE PROPERTY OF MICRO SWITCH, A DIVISION OF HONEYWELL. THIS DRAWING IS NOT TO BE COPIED OR USED WITHOUT THE APPROVAL OF MICRO SWITCH

GENERAL OPERATING CHARACTERISTICS

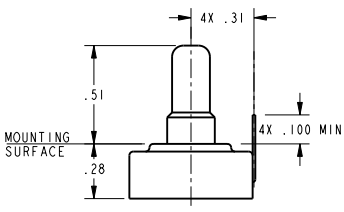
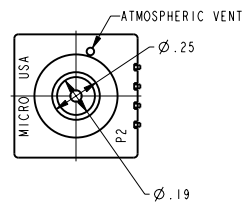
PRESSURE RANGE	0 TO 775 mmHg (0 TO 15 PSIG)
OVERPRESSURE	2325 mmHg (45 PSI)
TEMPERATURE RANGES	
STORAGE	-55°C TO +125°C
OPERATE	-40°C TO +85°C
COMPENSATED	0°C TO +50°C
SUPPLY VOLTAGE	16 VDC MAX
INPUT RESISTANCE	6800 OHM TYP

ELECTRICAL PERFORMANCE AT 10.00 ± .01 VDC SUPPLY AND +25°C

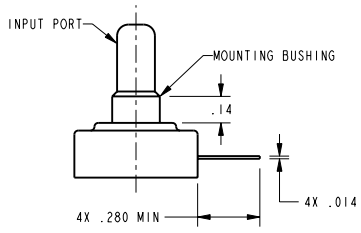
NULL OFFSET	0 ± 1 mV (AT 0 PSI)
F.S.O. / Δ	100 ± 1.5 mV (0 TO 15 PSI)
LINEARITY (BFSL)	
INPUT < VENT	± 1.25% F.S.O. MAX Δ
INPUT > VENT	± 2.5% F.S.O. MAX Δ
HYSTERESIS & REPEATABILITY	± 1.5% F.S.O. TYP Δ

TEMPERATURE ERROR (25°C TO 0°C OR +25°C TO +50°C)

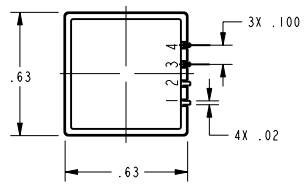
NULL SHIFT	± 4 mV MAX
SENSITIVITY SHIFT	± 3.0% F.S.O. MAX Δ



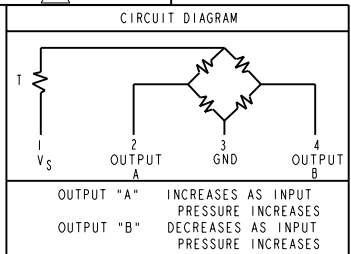
STYLE 1



STYLE 2



- NOTES
1 - TERMINALS ARE PLATED FOR SOLDERING
2 - LIMIT SOLDERING TO 315°C MAX FOR 10 SECONDS MAX
3 - F.S.O. IS THE ALGEBRAIC DIFFERENCE BETWEEN THE OUTPUT END POINTS (NULL AND FULL PRESSURE)
4 - INPUT MEDIA LIMITED ONLY TO THOSE MEDIA THAT WILL NOT ATTACK POLYESTER, SILICON OR SILICONE BASED ADHESIVE



THIRD ANGLE PROJECTION

SCALE 2 : 1

DO NOT SCALE PRINT

UNLESS OTHERWISE SPECIFIED TOLERANCES ARE

ONE PLACE (.01)	± .030
TWO PLACE (.00)	± .015
THREE PLACE (.000)	± .005

ANGLES ±

WEIGHT

ANSI Y14.5M-1982 APPLIES