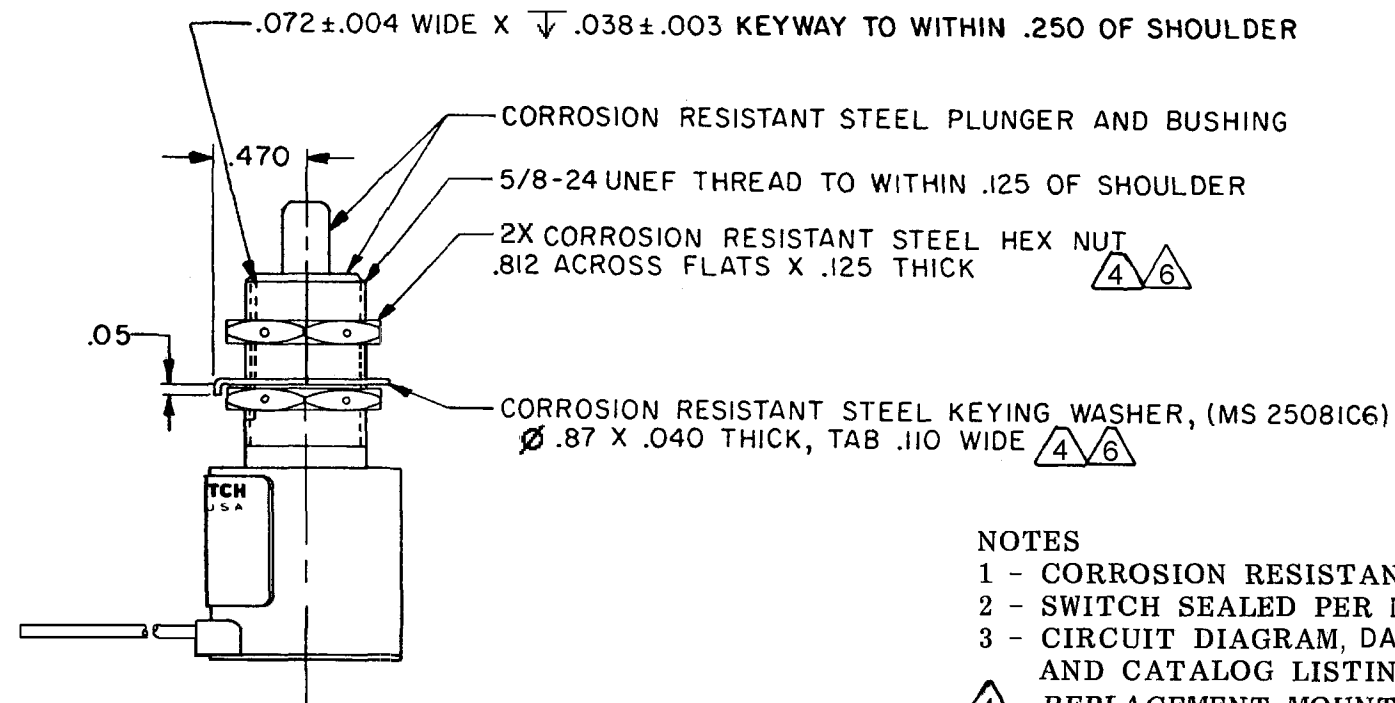
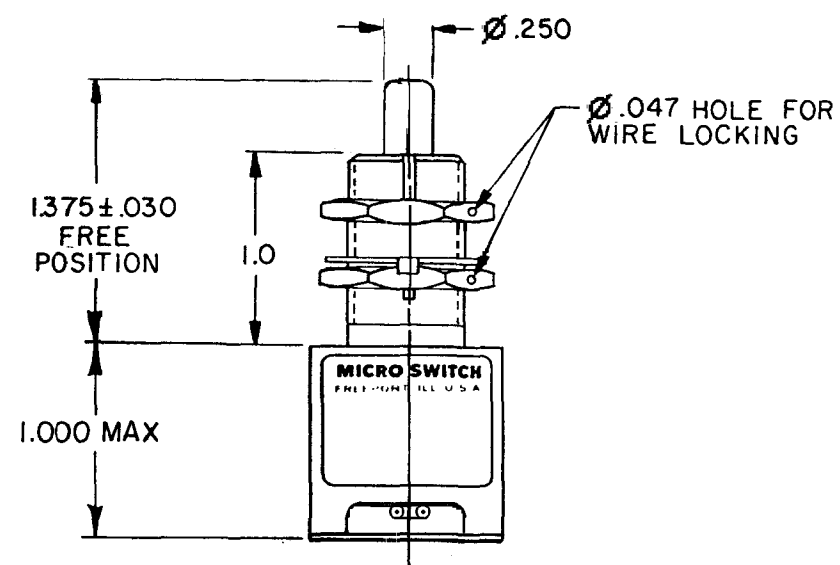
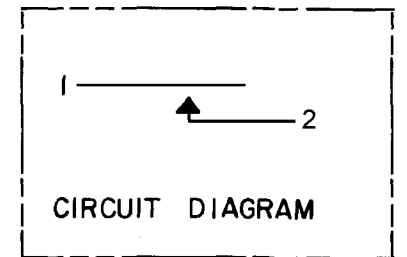
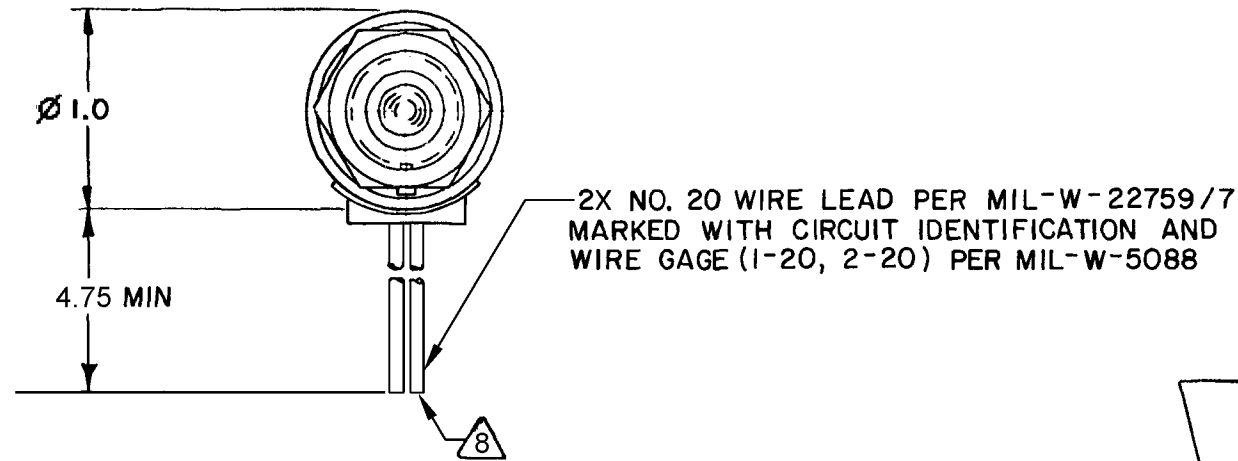


HONEYWELL
PART NUMBER
201EN62

REV	DOCUMENT	CHANGED BY	CHECK
B	0068107	KNR 06AUG10	CMH



- NOTES
- 1 - CORROSION RESISTANT STEEL ENCLOSURE
 - 2 - SWITCH SEALED PER MIL-PRF-8805 SYMBOL 4
 - 3 - CIRCUIT DIAGRAM, DATE CODE, FED. MFG. CODE AND CATALOG LISTING ARE SHOWN ON NAMEPLATE
 - 4 - REPLACEMENT MOUNTING HARDWARE PACKET 19PA71 WHICH CONTAINS STAINLESS STEEL HARDWARE
 - 5 - ELECTRICAL RATINGS APPLY AS SPECIFIED IN MIL-PRF-8805/40-1 FOR MS 24331-1 UP TO 185° F
 - 6 - HARDWARE FURNISHED ASSEMBLED
 - 7 - SWITCH PLUNGER SEAL VITON ELASTOMER
 - 8 - WIRE ENDS TO BE NOT STRIPPED

CHARACTERISTICS	ELECTRICAL DATA		
OPERATING FORCE ----- 6-12 LB	CONTACT ARRANGEMENT		
FULL OVERTRAVEL FORCE ----- 30 LB MAX	SPNO		
RELEASE FORCE ----- 4 LB MIN	LOAD	28 VDC ⁵	
PRETRAVEL ----- .040 MAX		SEA LEVEL	50,000 FT.
DIFFERENTIAL TRAVEL ----- .020 MAX	RES	4	4
OVERTRAVEL ----- .250 MIN	IND	2	2
	MOTOR	4	

DESIGN UNITS: INCH
TOLERANCES UNLESS NOTED:

NO PLACE	X	±	.040
ONE PLACE	.X	±	.030
TWO PLACE	.XX	±	.015
THREE PLACE	.XXX	±	.005
FOUR PLACE	.XXXX	±	.0005
ANGLES		±	2'

THIRD ANGLE PROJECTION

DRAWN	TSG	21 NOV 06
CHECK	RJ	12 JUN 07
THIS DRAWING COVERS A PROPRIETARY ITEM AND IS THE PROPERTY OF HONEYWELL. THIS DRAWING IS NOT TO BE COPIED OR USED WITHOUT THE PERMISSION OF HONEYWELL.		
INTERPRET PER ANSI Y14.5M-1982 OTHER HONEYWELL ENGINEERING STANDARDS MAY APPLY		
RASTER		

Honeywell			
TITLE SWITCH-ENCLOSED			
SIZE	TYPE	DRAWING NAME	REV
B	I	201EN62	B
SCALE	-	SHEET 1 OF 1	