

MICRO SWITCH

A DIVISION OF MINNEAPOLIS-HONEYWELL REGULATORS COMPANY
 FARMINGTON, CONNECTICUT

FED. MFR. CODE 91929

ASSEMBLY- TOGGLE SWITCH

CATALOG LISTING

23AT1

(M) 23AT1
ISSUE 1

REPLACES

RELEASE NO.

21 JUNE 56

CHECK

21 JUNE 56

CHECK

21 JUNE 56

CHECK

21 JUNE 56

CHECK

21 JUNE 56

CHECK

21 JUNE 56

CHECK

21 JUNE 56

CHECK

21 JUNE 56

CHECK

21 JUNE 56

CHECK

23AT1

M

DRAWING
NUMBER

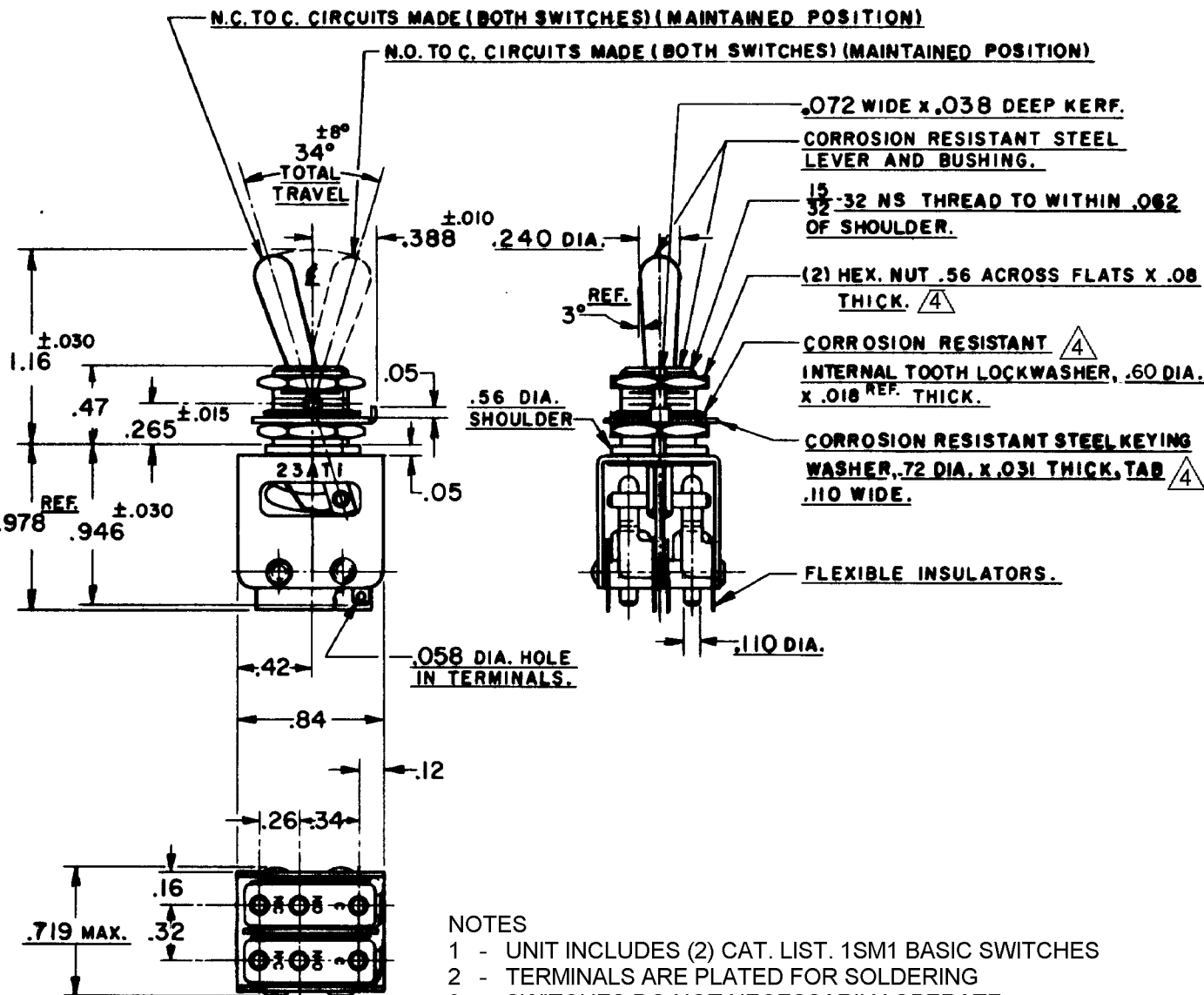
8

ISSUE

REVISIONS

A 207416
TSM
18 FEB 03

RASTER



NOTES

- 1 - UNIT INCLUDES (2) CAT. LIST. 1SM1 BASIC SWITCHES
- 2 - TERMINALS ARE PLATED FOR SOLDERING
- 3 - SWITCHES DO NOT NECESSARILY OPERATE SIMULTANEOUSLY
- 4 - HARDWARE FURNISHED ASSEMBLED WITH SWITCH OR IN PACKET PER MIL-PRF-8805
- 5 - REPLACEMENT MOUNTING HARDWARE PACHET 15PA312-AT

THIS DRAWING COVERS A PROPRIETARY ITEM AND IS THE PROPERTY OF MICRO SWITCH, A DIVISION OF HONEYWELL THIS DRAWING IS NOT TO BE COPIED OR USED WITHOUT THE APPROVAL OF MICRO SWITCH.

CHARACTERISTICS

ELECTRICAL DATA

SCALE ----- FULL

CONTACT ARRANGEMENT
(2) S.P.D.T.

DO NOT SCALE PRINT

250 VAC -----	5 AMP
30 VOLTS DC RATING	
INDUCTIVE -----	SEA LEVEL ----- 3 AMP
	50,000 FT. ----- 2.5 AMP
RESISTIVE -----	SEA LEVEL ----- 5 AMP
	50,000 FT. ----- 3 AMP
MAXIMUM INRUSH -----	24 AMP

UNLESS OTHERWISE SPECIFIED
 DIMENSIONS ARE IN INCHES
TOLERANCES ARE:
 ONE PLACE (.0) ±.030
 TWO PLACE (.00) ±.018
 THREE PLACE (.000) ±.008
 ANGLES ±
 WEIGHT ----- .06 LB.