

# TT-UK-R-F/250AC


Order No.: 2788249



<http://eshop.phoenixcontact.de/phoenix/treeViewClick.do?UID=2788249>

Modular double terminal block with gas-filled surge arrester as coarse protection between both levels, nominal voltage: 250 V AC, for mounting on NS 32 or NS 35/7.5, closed housing, terminal width: 15.5 mm, terminal height: 45.5 mm

## Commercial data

|                          |  |
|--------------------------|--|
| GTIN (EAN)               | <br>4 017918 071455 |
| sales group              | J303   |
| Pack                     | 25 pcs.  |
| Customs tariff           | 85363010   |
| Catalog page information | Page 89 (TT-2007)  |

## Product notes

WEEE/RoHS-compliant since:  
01/31/2006



<http://www.download.phoenixcontact.com>  
Please note that the data given here has been taken from the online catalog. For comprehensive information and data, please refer to the user documentation. The General Terms and Conditions of Use apply to Internet downloads.

## Technical data

### General

|                                    |       |
|------------------------------------|-------|
| Housing material                   | PA    |
| Inflammability class acc. to UL 94 | V2    |
| Color                              | black |

|  |   |
|--|---|
| Standards for air and creepage distances | VDE 0110-1                                |
| Total surge current (8/20) $\mu$ s       | 20 kA                                     |
| Ambient temperature (operation)          | -40 °C ... 80 °C                          |
| Mounting type                            | DIN rail/G-profile rail                   |
| Design                                   | Single-level terminal block – two-channel |
| Degree of protection                     | IP20                                      |
| Direction of action                      | Line-Line                                 |
| Width                                    | 15.30 mm                                  |
| Height                                   | 45.50 mm                                  |
| Length                                   | 50.00 mm                                  |

**Protective circuit**

|   |                   |
|---|-------------------|
| IEC category  | C2                |
|   | D1                |
| VDE requirement class   | C2                |
|   | D1                |
| Nominal voltage $U_N$   | 250 V AC          |
| Maximum continuous operating voltage $U_C$                                      | 150 V DC          |
|   | 250 V AC          |
| Maximum continuous voltage $U_C$ (wire-wire)                                    | 150 V DC          |
|   | 250 V AC          |
| Operating effective current $I_C$ at $U_C$                                      | $\leq 2 \mu$ A    |
| Ground conductor current $I_{PE}$   | $\leq 2 \mu$ A    |
| Nominal discharge surge current $I_n$ (8/20) $\mu$ s<br>(Core-Core)             | 20 kA             |
| Total surge current (8/20) $\mu$ s  | 20 kA             |
| Max. discharge surge current $I_{max}$ (8/20) $\mu$ s<br>maximum (Core-Core)    | 20 kA             |
| Output voltage limitation at 1 kV/ $\mu$ s (Core-Core)<br>spike                 | $\leq 1.4$ kV     |
| Response time $t_A$ (Core-Core)   | $\leq 100$ ns     |
| Capacity (Core-Core)  | $\leq 1.5$ pF     |
| Surge carrying capacity in acc. with IEC 61643-21<br>(Core-Core)                | C2 (10 kV/5 kA)   |
|   | D1 (20 kV/2.5 kA) |
| Alternating current carrying capacity in acc. with<br>IEC 61643-21 (Core-Earth) | 20 A (1 s)        |

**Connection data**

|  |                       |
|--|-----------------------|
| Connection method                      | Screw connection      |
| Connection type IN                     | Screw terminal blocks |
| Connection type OUT                    | Screw terminal blocks |
| Screw thread                           | M3                    |
| Tightening torque                      | 0.5 Nm                |
| Stripping length                       | 8 mm                  |
| Conductor cross section stranded min.  | 0.2 mm <sup>2</sup>   |
| Conductor cross section stranded max.  | 2.5 mm <sup>2</sup>   |
| Conductor cross section solid min.     | 0.2 mm <sup>2</sup>   |
| Conductor cross section solid max.     | 4 mm <sup>2</sup>     |
| Conductor cross section AWG/kcmil min. | 24                    |
| Conductor cross section AWG/kcmil max  | 12                    |

**Connection, protective circuit**

|                       |              |
|-----------------------|--------------|
| Standards/regulations | IEC 61643-21 |
|-----------------------|--------------|

**Certificates / Approvals**

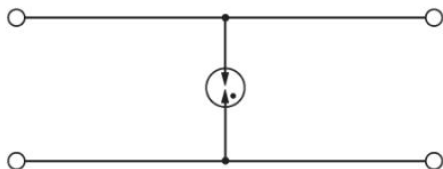


Certification

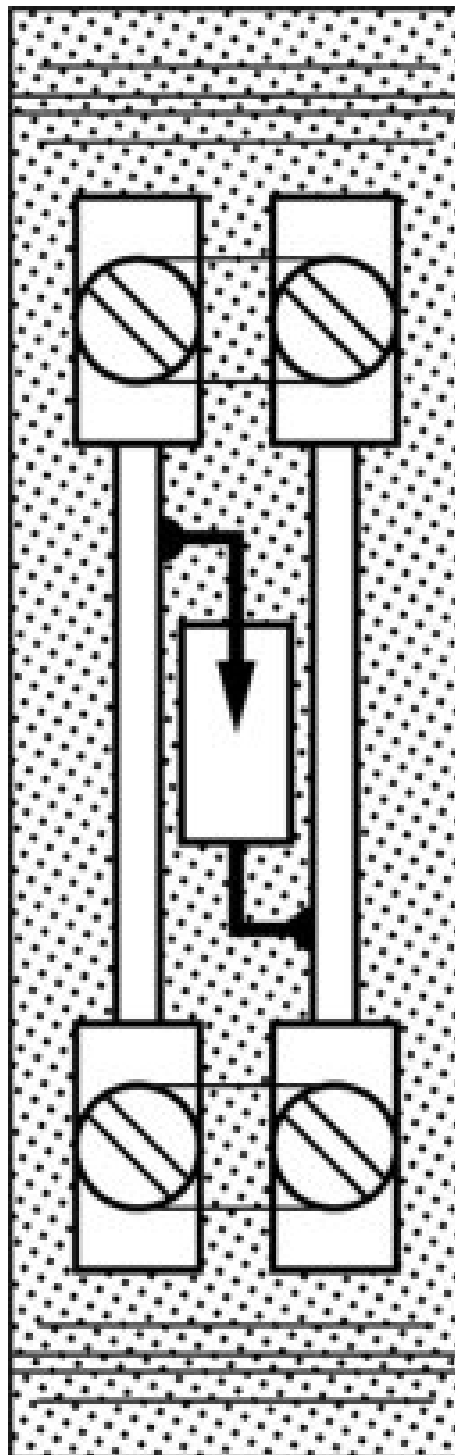
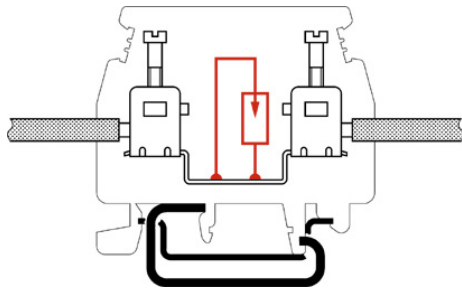
GOST

**Diagrams/Drawings**

Circuit diagram



Schematic diagram



**Address**

PHOENIX CONTACT Inc., USA  
586 Fulling Mill Road  
Middletown, PA 17057, USA  
Phone (800) 888-7388  
Fax (717) 944-1625  
<http://www.phoenixcon.com>



© 2011 Phoenix Contact  
Technical modifications reserved;