

Interface module - FLKM-D25 SUB/S/LA - 2281649

Please be informed that the data shown in this PDF Document is generated from our Online Catalog. Please find the complete data in the user's documentation. Our General Terms of Use for Downloads are valid (<http://phoenixcontact.com/download>)




VARIOFACE module, with screw connection and D-Subminiature pin strip, for mounting on NS 35/7.5 or NS 32, with light indicator, 25-pos.

The illustration shows version FLKM-D37 SUB/B/LA



Key Commercial Data

Packing unit	1 pc
GTIN	 4 017918 054892
Weight per Piece (excluding packing)	195.54 g
Custom tariff number	85369010
Country of origin	Germany

Technical data

Dimensions

Width	90 mm
Height	77 mm
Depth	58.5 mm

Ambient conditions

Ambient temperature (operation)	-20 °C ... 50 °C
Ambient temperature (storage/transport)	-20 °C ... 70 °C

General

Max. perm. operating voltage	24 V DC
Max. perm. current (per branch)	2.5 A
Number of positions	25

Interface module - FLKM-D25 SUB/S/LA - 2281649

Technical data

General

Status display	LED
Mounting position	any
Standards/regulations	IEC 60664
	DIN EN 50178
	IEC 62103
Degree of pollution	2
Overvoltage category	II

Connection data for connection 1

Connection name	Field level
Connection in acc. with standard	IEC / EN
Connection method	Screw connection
Stripping length	8 mm
Screw thread	M3
Conductor cross section solid	0.2 mm ² ... 4 mm ²
Conductor cross section flexible	0.2 mm ² ... 2.5 mm ²
Conductor cross section AWG	24 ... 12

Standards and Regulations

Standards/regulations	IEC 60664
	DIN EN 50178
	IEC 62103
Degree of pollution	2
Overvoltage category	II

Classifications

eCl@ss

eCl@ss 4.0	27250313
eCl@ss 4.1	27250313
eCl@ss 5.0	27250313
eCl@ss 5.1	27250313
eCl@ss 6.0	27242608
eCl@ss 7.0	27141152

ETIM

ETIM 2.0	EC001434
ETIM 3.0	EC001604

Interface module - FLKM-D25 SUB/S/LA - 2281649

Classifications

ETIM

ETIM 4.0	EC001604
ETIM 5.0	EC002780

UNSPSC

UNSPSC 6.01	30211824
UNSPSC 7.0901	39121421
UNSPSC 11	39121421
UNSPSC 12.01	39121421
UNSPSC 13.2	39121421

Accessories

Accessories

System cable

Cable - CABLE-D25SUB/B/S/ 50/KONFEK/S - 2302120



Round shielded cable set, with 25-pos. D-SUB female and male connectors, cable length: 0.5 m

Cable - CABLE-D25SUB/B/S/100/KONFEK/S - 2302133



Round shielded cable set, with 25-pos. D-SUB female and male connectors, cable length: 1 m

Cable - CABLE-D25SUB/B/S/150/KONFEK/S - 2302146



Round shielded cable set, with 25-pos. D-SUB female and male connectors, cable length: 1.5 m

Interface module - FLKM-D25 SUB/S/LA - 2281649

Accessories

Cable - CABLE-D25SUB/B/S/200/KONFEK/S - 2302159



Round shielded cable set, with 25-pos. D-SUB female and male connectors, cable length: 2 m

Cable - CABLE-D25SUB/B/S/300/KONFEK/S - 2302162



Round shielded cable set, with 25-pos. D-SUB female and male connectors, cable length: 3 m

Cable - CABLE-D25SUB/B/S/400/KONFEK/S - 2302175



Round shielded cable set, with 25-pos. D-SUB female and male connectors, cable length: 4 m

Cable - CABLE-D25SUB/B/S/600/KONFEK/S - 2302188



Round shielded cable set, with 25-pos. D-SUB female and male connectors, cable length: 6 m

Cable - CABLE D-SUB-S/.../.../... - 2302340



Shielded round cable, assembled with one D-SUB male and one female connector, variable cable length

Interface module - FLKM-D25 SUB/S/LA - 2281649

Accessories

Cable - CABLE D-SUB-B-B-S/.../.../... - 2302421



Shielded round cable, assembled with two D-SUB female connectors, variable cable length

Cable - CABLE-D-25SUB/F/OE/0,25/S/0,5M - 2926153



Shielded cable with a 25-pos. D-SUB female connector and one open end. The individual wires are labeled 1 to 25 and fitted with ferrules. The braided shield is routed to a separate cable end. Cable length: 0.5 m.

Cable - CABLE-D-25SUB/F/OE/0,25/S/1,0M - 2926166



Shielded cable with a 25-pos. D-SUB female connector and one open end. The individual wires are labeled 1 to 25 and fitted with ferrules. The braided shield is routed to a separate cable end. Cable length: 1 m.

Cable - CABLE-D-25SUB/F/OE/0,25/S/1,5M - 2926179



Shielded cable with a 25-pos. D-SUB female connector and one open end. The individual wires are labeled 1 to 25 and fitted with ferrules. The braided shield is routed to a separate cable end. Cable length: 1.5 m.

Cable - CABLE-D-25SUB/F/OE/0,25/S/2,0M - 2926182



Shielded cable with a 25-pos. D-SUB female connector and one open end. The individual wires are labeled 1 to 25 and fitted with ferrules. The braided shield is routed to a separate cable end. Cable length: 2 m.

Interface module - FLKM-D25 SUB/S/LA - 2281649

Accessories

Cable - CABLE-D-25SUB/F/OE/0,25/S/3,0M - 2926195



Shielded cable with a 25-pos. D-SUB female connector and one open end. The individual wires are labeled 1 to 25 and fitted with ferrules. The braided shield is routed to a separate cable end. Cable length: 3 m.

Cable - CABLE-D-25SUB/F/OE/0,25/S/4,0M - 2926205



Shielded cable with a 25-pos. D-SUB female connector and one open end. The individual wires are labeled 1 to 25 and fitted with ferrules. The braided shield is routed to a separate cable end. Cable length: 4 m.

Cable - CABLE-D-25SUB/F/OE/0,25/S/6,0M - 2926218



Shielded cable with a 25-pos. D-SUB female connector and one open end. The individual wires are labeled 1 to 25 and fitted with ferrules. The braided shield is routed to a separate cable end. Cable length: 6 m.

Cable - CABLE-D-25SUB-F-OE-0,25-S/... - 2900906

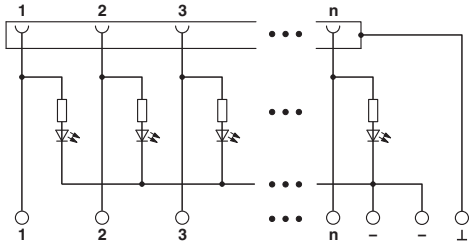


Shielded cable with a 25-pos. D-SUB female connector and one open end. The individual wires are labeled 1 to 25 and fitted with ferrules. The braided shield is routed to a separate cable end. Cable length: variable.

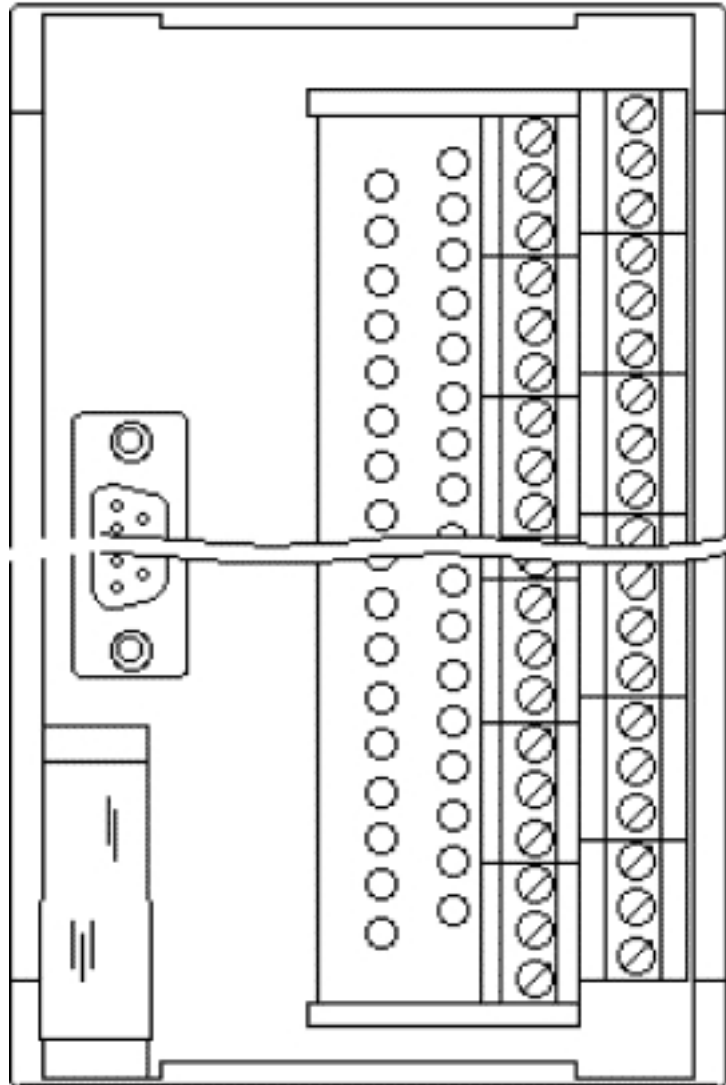
Drawings

Interface module - FLKM-D25 SUB/S/LA - 2281649

Circuit diagram



Schematic diagram



Mouser Electronics

Authorized Distributor

Click to View Pricing, Inventory, Delivery & Lifecycle Information:

[Phoenix Contact:](#)

[2281649](#)