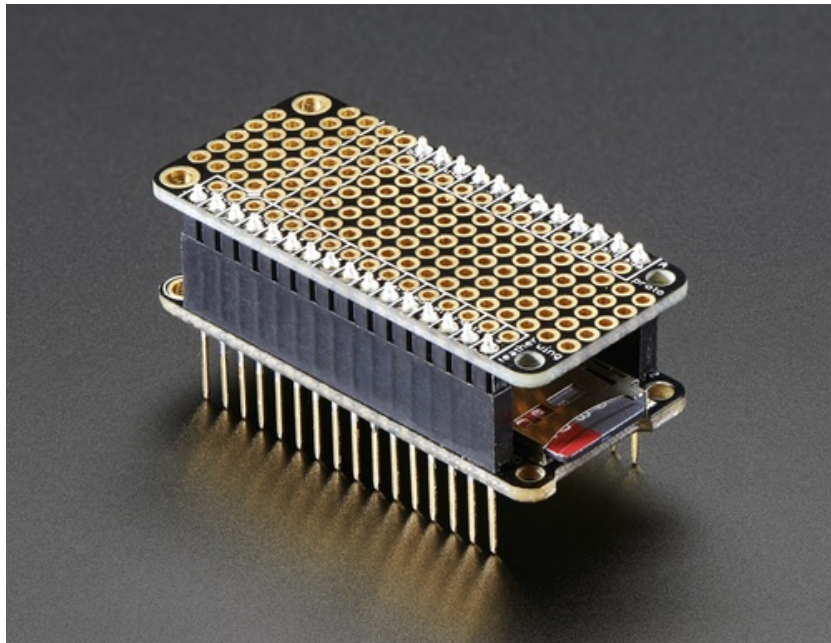


## FeatherWing Proto and Doubler

Created by lady ada



Last updated on 2016-01-07 02:20:08 PM EST

## Guide Contents

Guide Contents	2
Overview	3
FeatherWing Proto	3
FeatherWing Doubler	4
Proto Pinout	5
Proto Pinout	5
Duplicated IO Pins	5
Power Rails	6
Proto Grid	7
Doubler Pinout	9
Doubler Pinout	9
Duplicated IO Pins	9
Power Rails	11
Proto Grid	13
Assembly	15
Downloads	19
Fabrication prints	19

## Overview

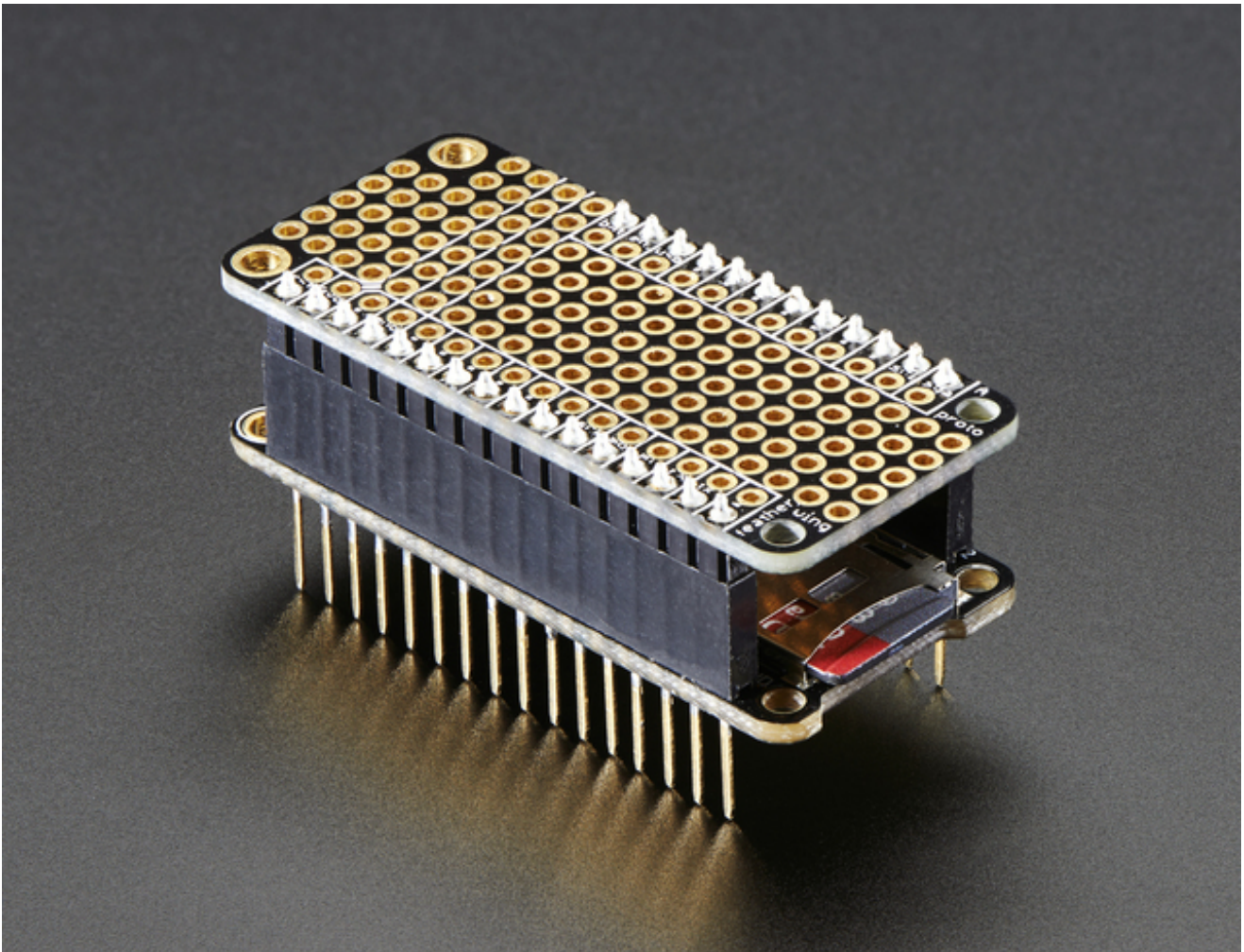
---

Once you've got your Feather board up and running you probably want to have some custom circuitry attached. Of course, you can start with a breadboard setup and that will work just fine for prototyping. But, once you know what you want, a proto feather can keep the components compact and secure.

We have *two options* for prototyping, both are "FeatherWings" - add on boards that can be plugged right into any Feather.

## FeatherWing Proto

---



First is the **FeatherWing Proto** - a prototyping add-on for all Feather boards. Using our [Feather Stacking Headers](http://adafru.it/2830) (<http://adafru.it/2830>) or [Feather Female Headers](http://adafru.it/2886) (<http://adafru.it/2886>) you can connect a FeatherWing on top or bottom of your Feather board.

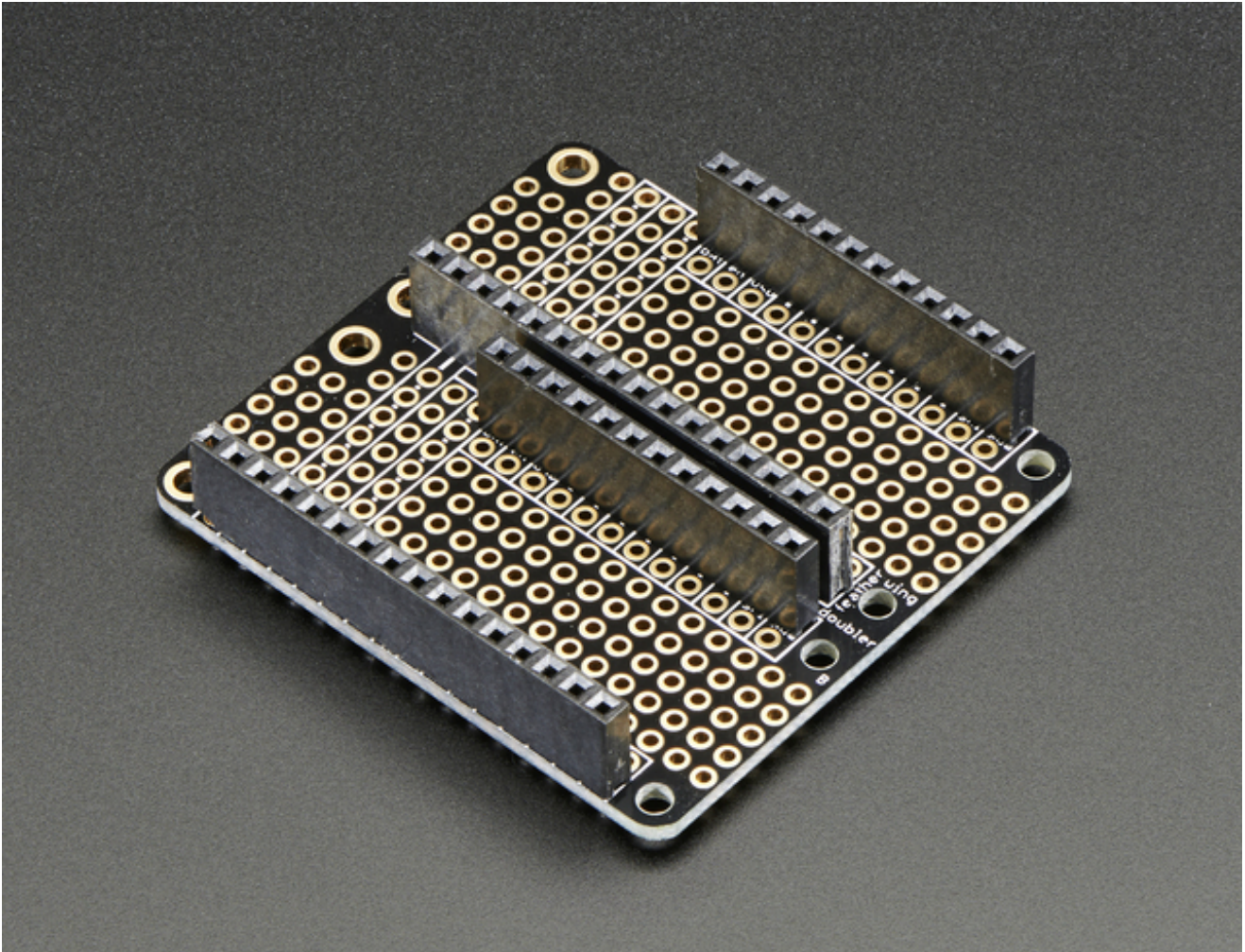
This has a duplicate breakout for each pin on a Feather, as well as a bunch of plain grid proto holes. For GND and 3.3V, we give you a strip of connected pads. There's plenty of room for



buttons (<http://adafru.it/dSh>), indicator LEDs (<http://adafru.it/dLA>), or anything for your portable project. The FeatherWing Proto makes an ideal partner for any of our Feather boards.

## FeatherWing Doubler

---



If you need even more space, or maybe you want to have two wings plugged in at once, you can double your prototyping space with a FeatherWing Doubler. Using our [Feather Stacking Headers](http://adafru.it/2830) (<http://adafru.it/2830>) or [Feather Female Headers](http://adafru.it/2886) (<http://adafru.it/2886>) you can connect a FeatherWing on top or bottom of your Feather board.

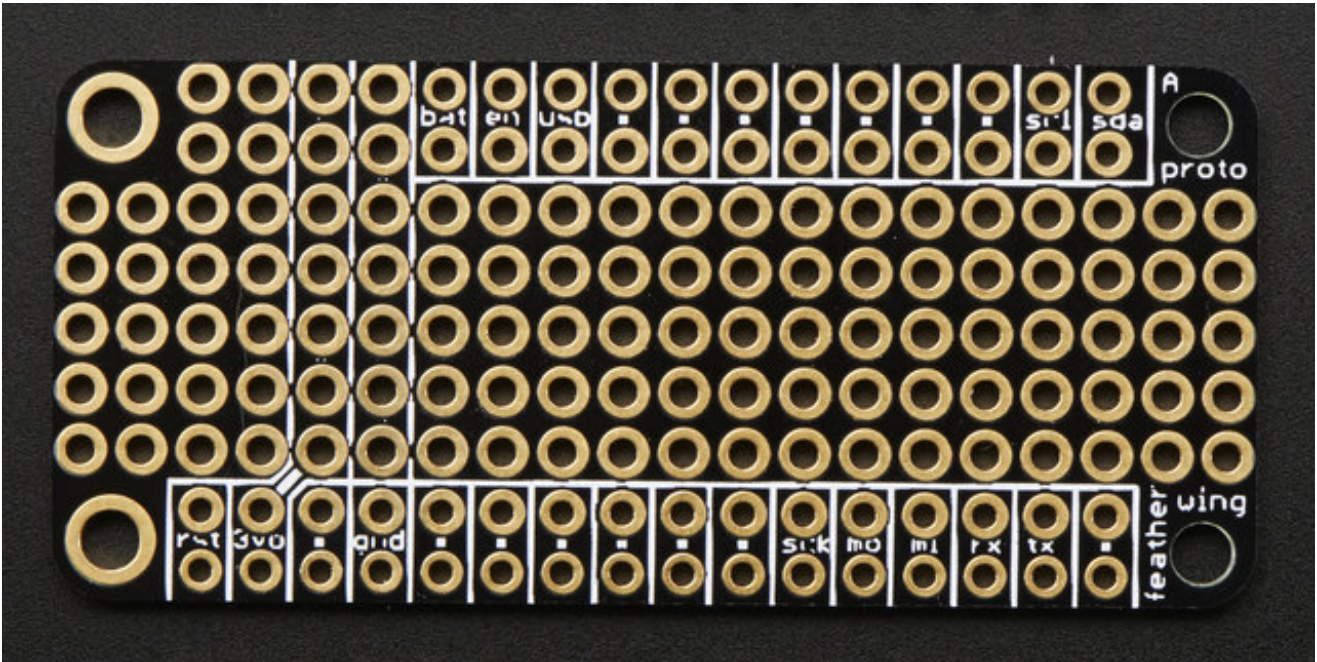
This design also has duplicate breakout for each pin on a Feather, as well as a bunch of plain grid proto holes. For GND and 3.3V, we give you a strip of connected pads. The I/O pins are 'connected through' between the two sides with skinny 10mil thick traces that pass through the 0.1" grid holes so you can plug a Feather into one side and you get a fully connected set of headers on the other side

## Proto Pinout

## Proto Pinout

---

The Proto Featherwing is fairly simple. It's 2.0" x 0.9" so it fits right over a feather.

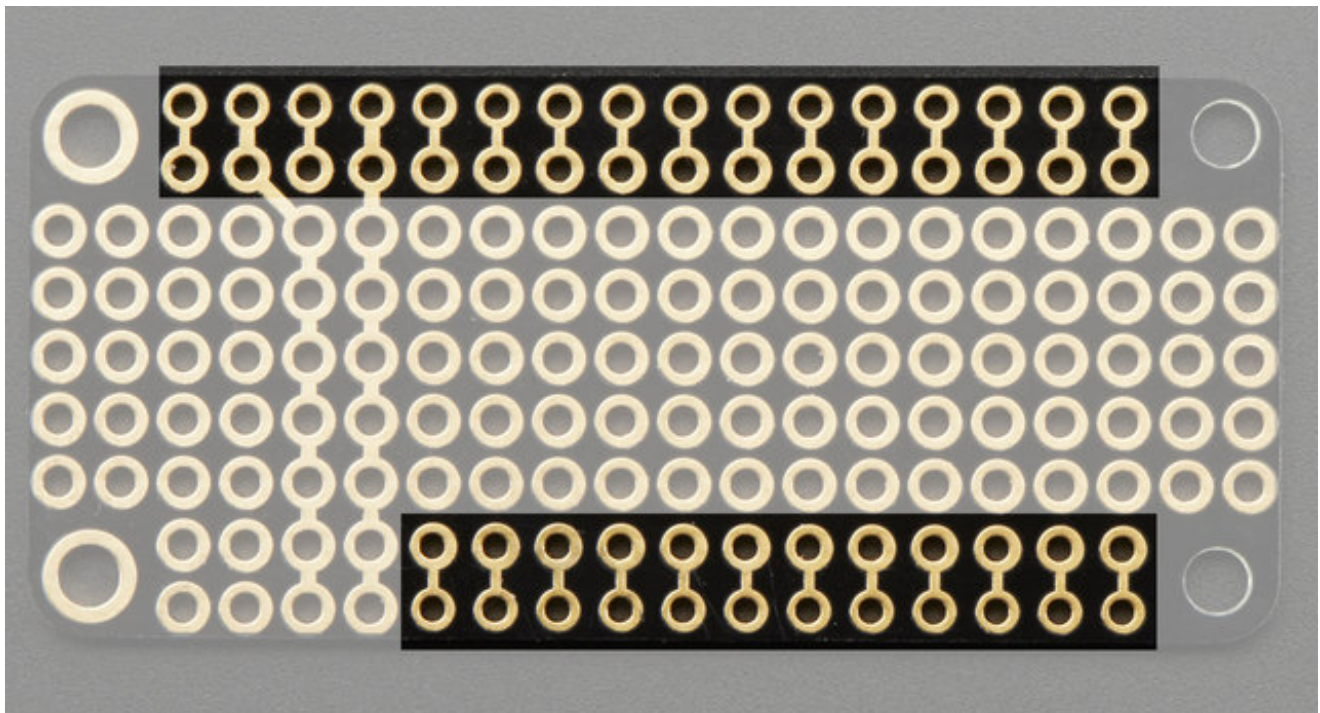
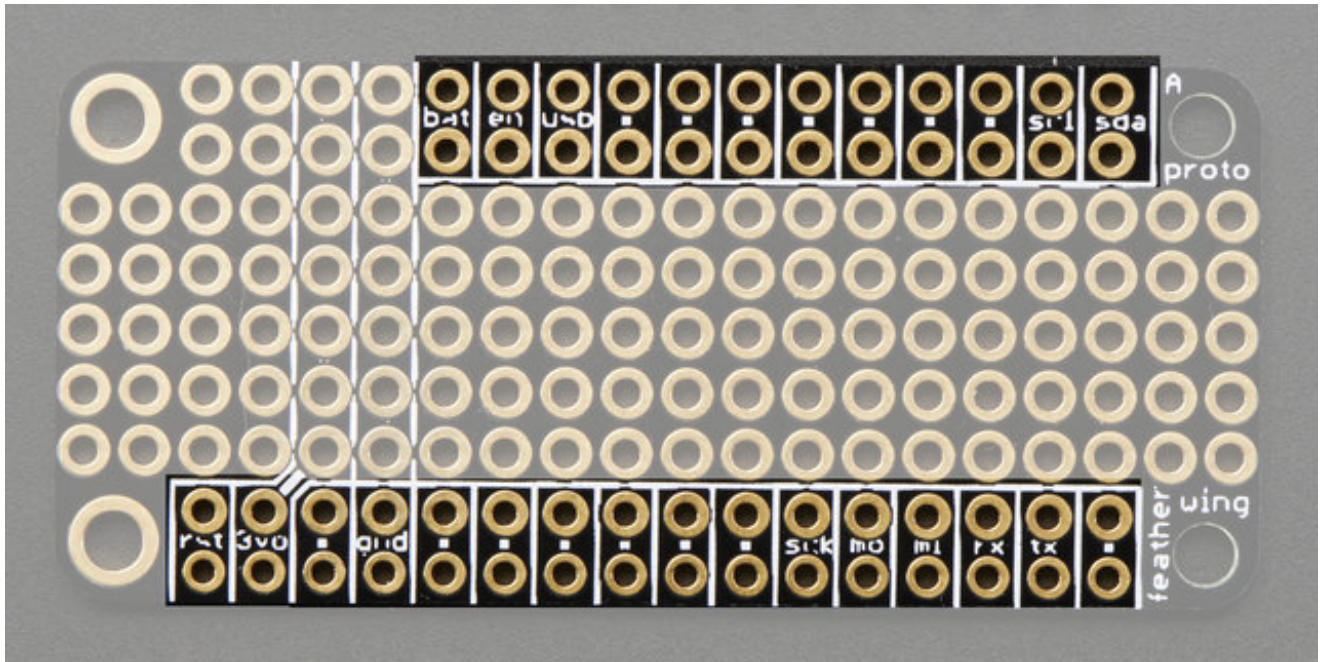


## Duplicated IO Pins

---

On the outer edge are all the pins you'd want to solder in to connect to the Feather. The inner set of pins are boxed and have small text or dots to indicate they are connected. The above shows the outer and inner set of pins. They are tied together so you have access to each I/O pin!

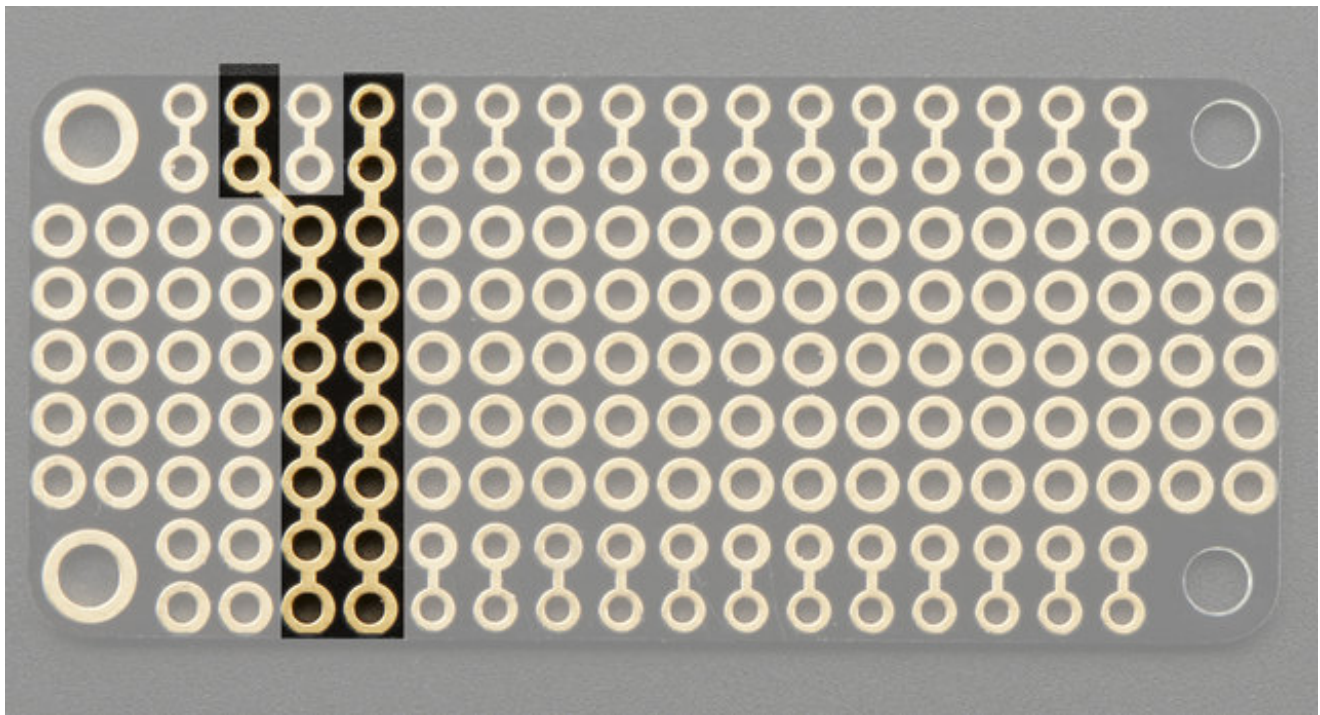
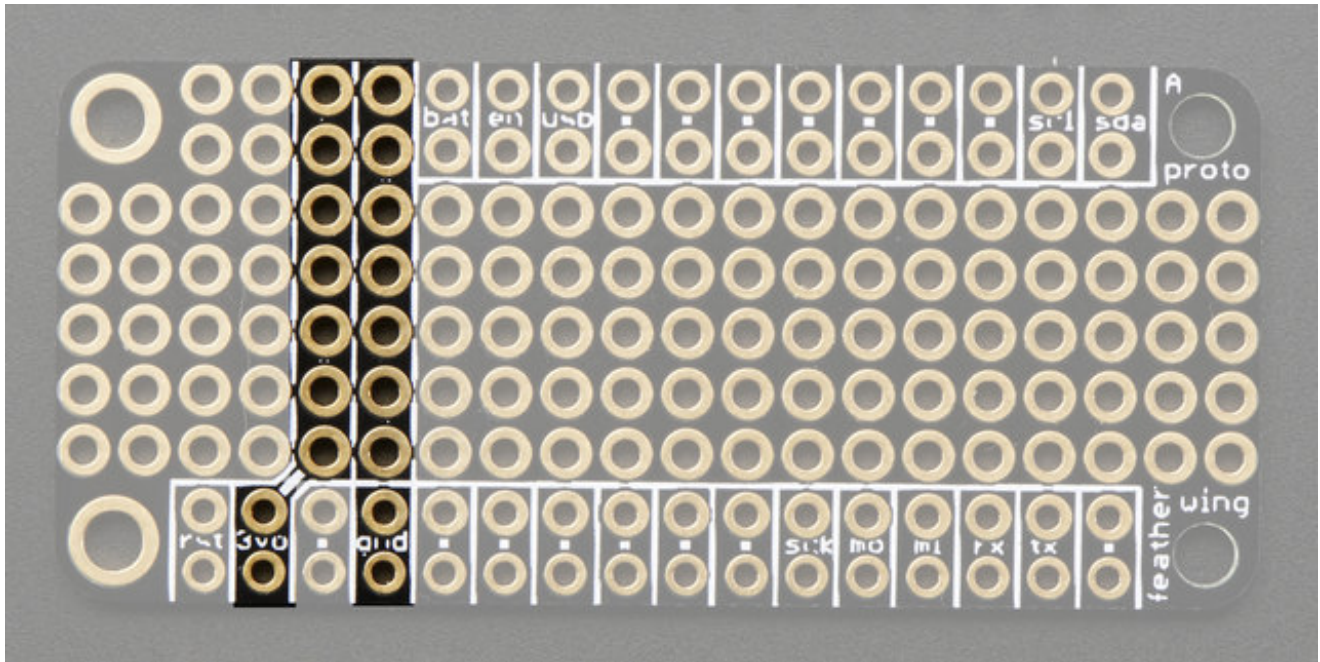




## Power Rails

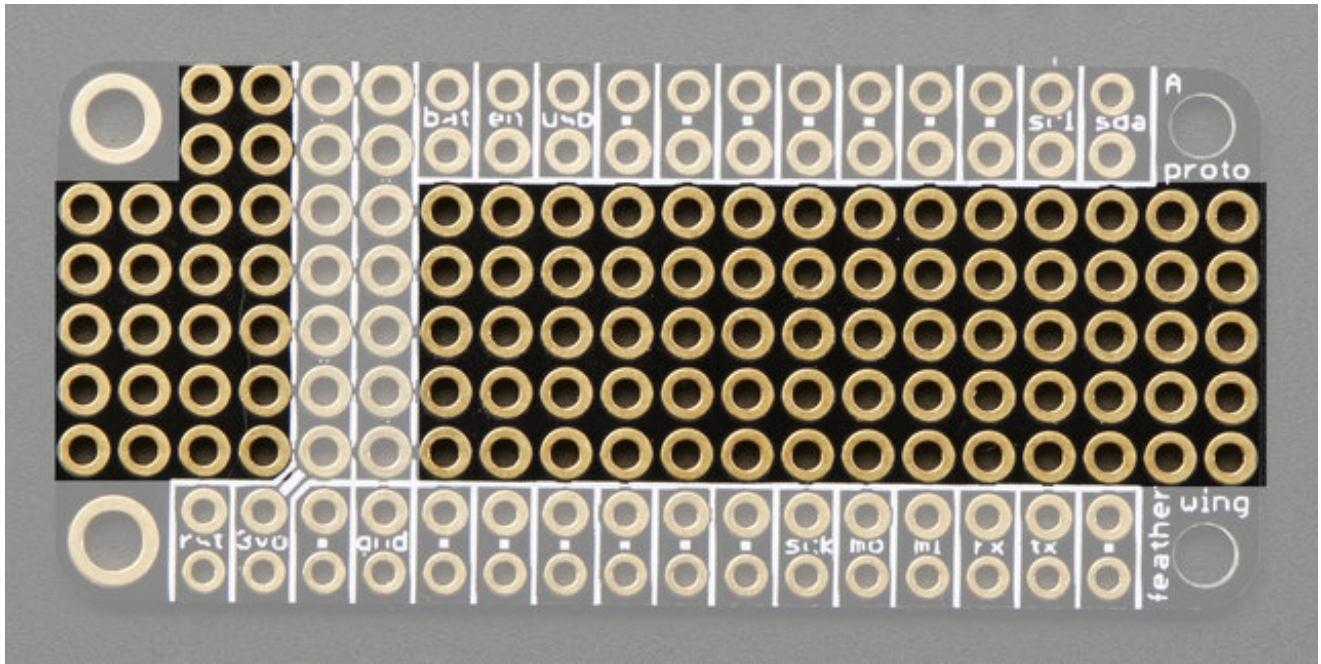
You also have two strips of holes that are all connected for 3.3V (left strip) and GND (right strip). This way you have plenty of power/ground connections available. The holes are 0.047" diameter and are connected with 24mil traces.





## Proto Grid

Finally, there's a full set of prototyping grid, each hole is 0.047" diameter

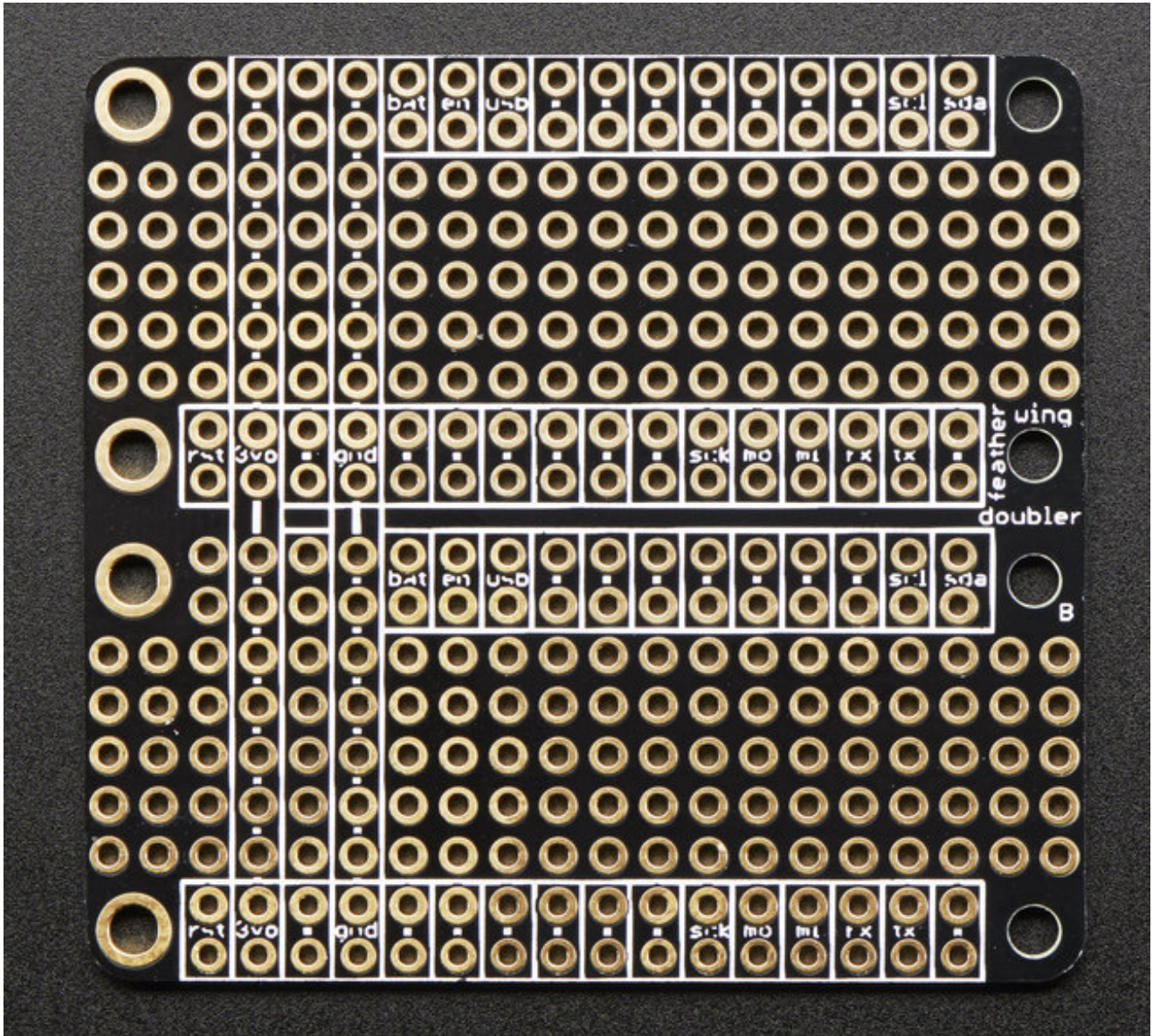




## Doubler Pinout

---

The Proto Featherwing is fairly simple. It's 2.0" x 1.9" - the same as two proto Featherwings side by side with a 0.1" spacing in between (since there's slight variations on PCB routes, you don't want to have no spacing between them or plugged-in-feathers might jam)



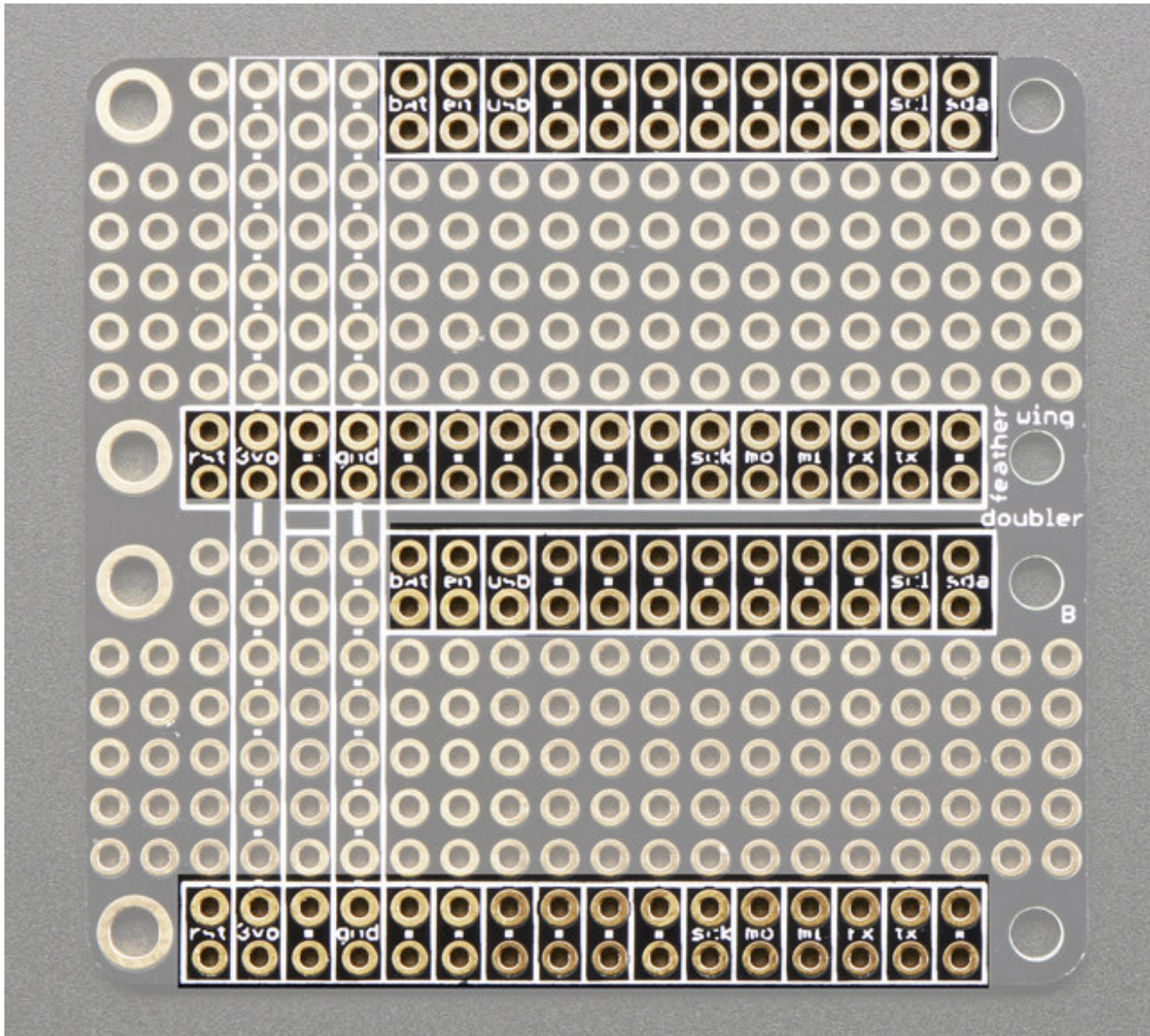
## Duplicated IO Pins

---

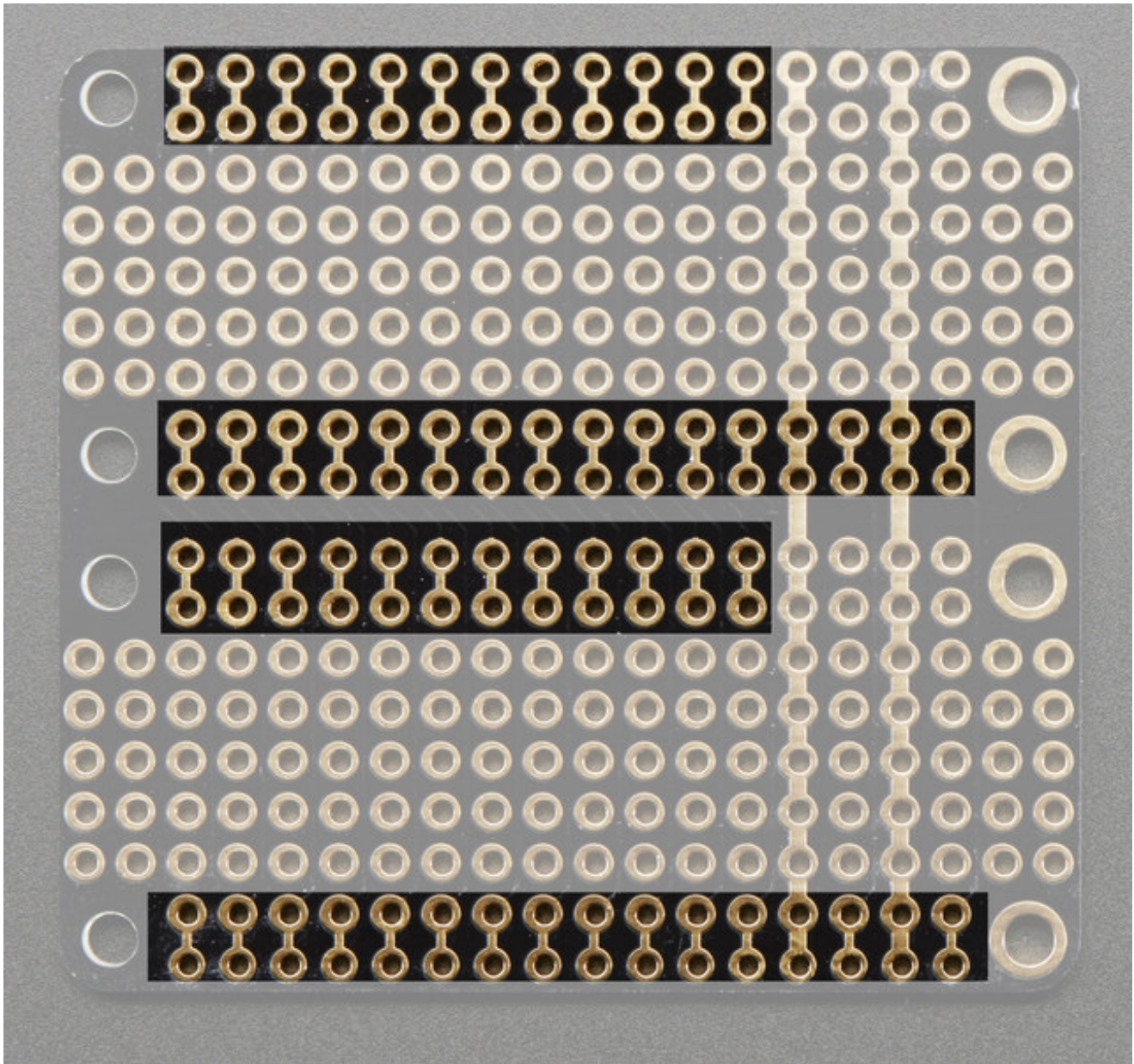
On the outer edges are all the pins you'd want to solder in to connect to the Feather. The inner set of pins are boxed and have small text or dots to indicate they are connected. They are tied together so you have access to each I/O pin!



Also, both sets of IO pins are connected together





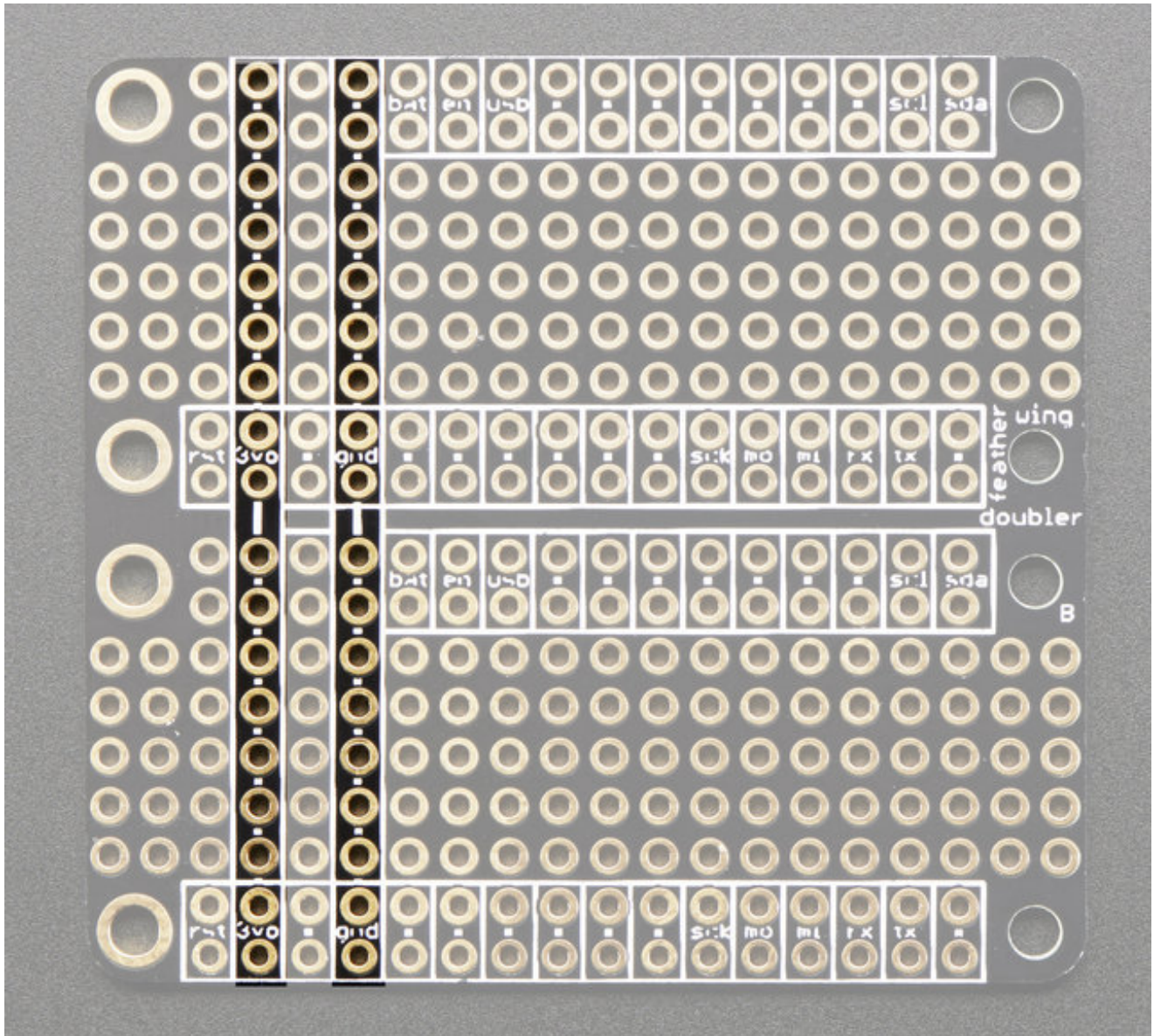


## Power Rails

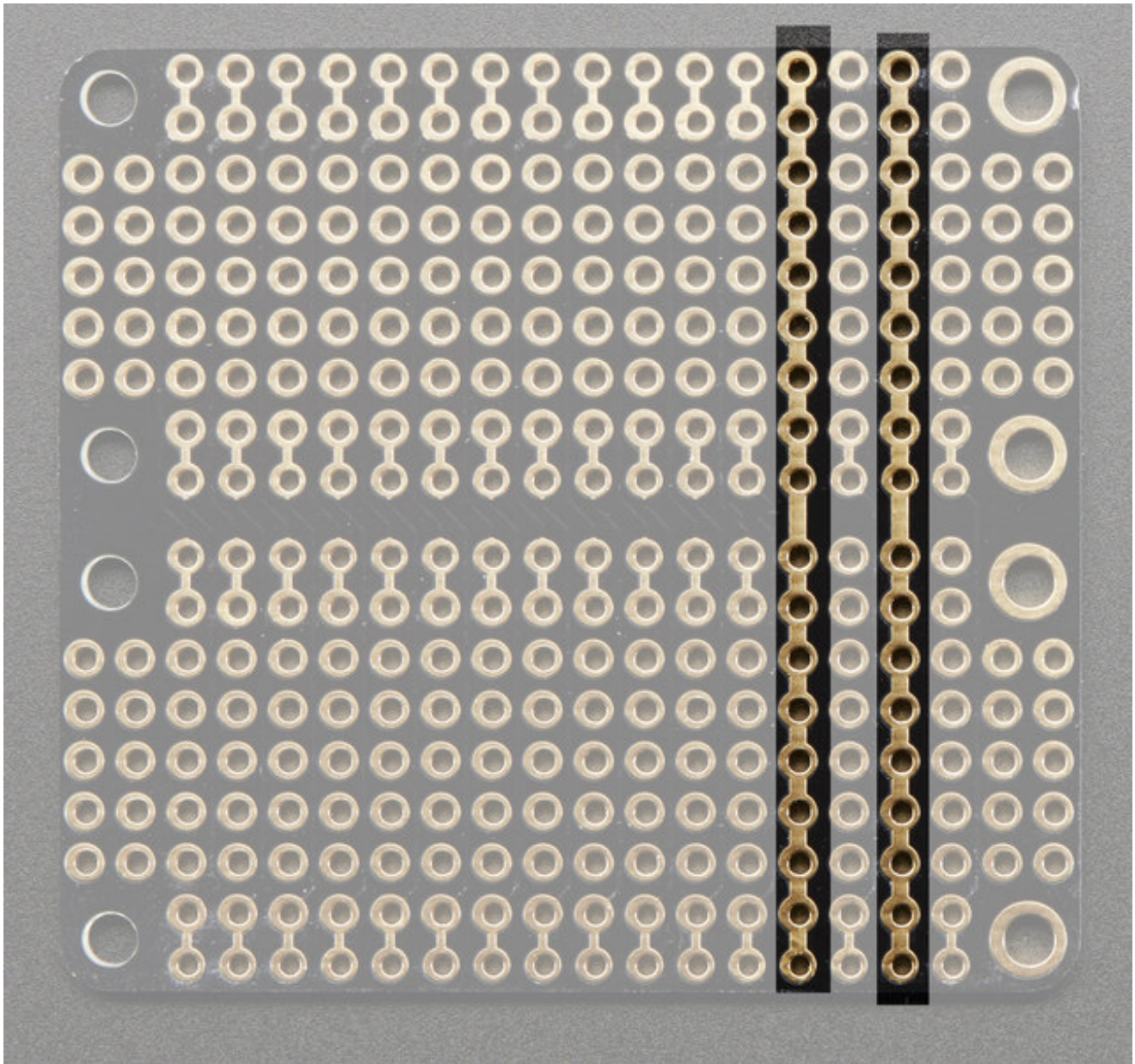
You also have two strips of holes that are all connected for 3.3V (left strip) and GND (right strip). This way you have plenty of power/ground connections available. The holes are 0.047" diameter and are connected with 32mil traces.

Note there's a thin strip of proto holes in between the 3V and GND rails









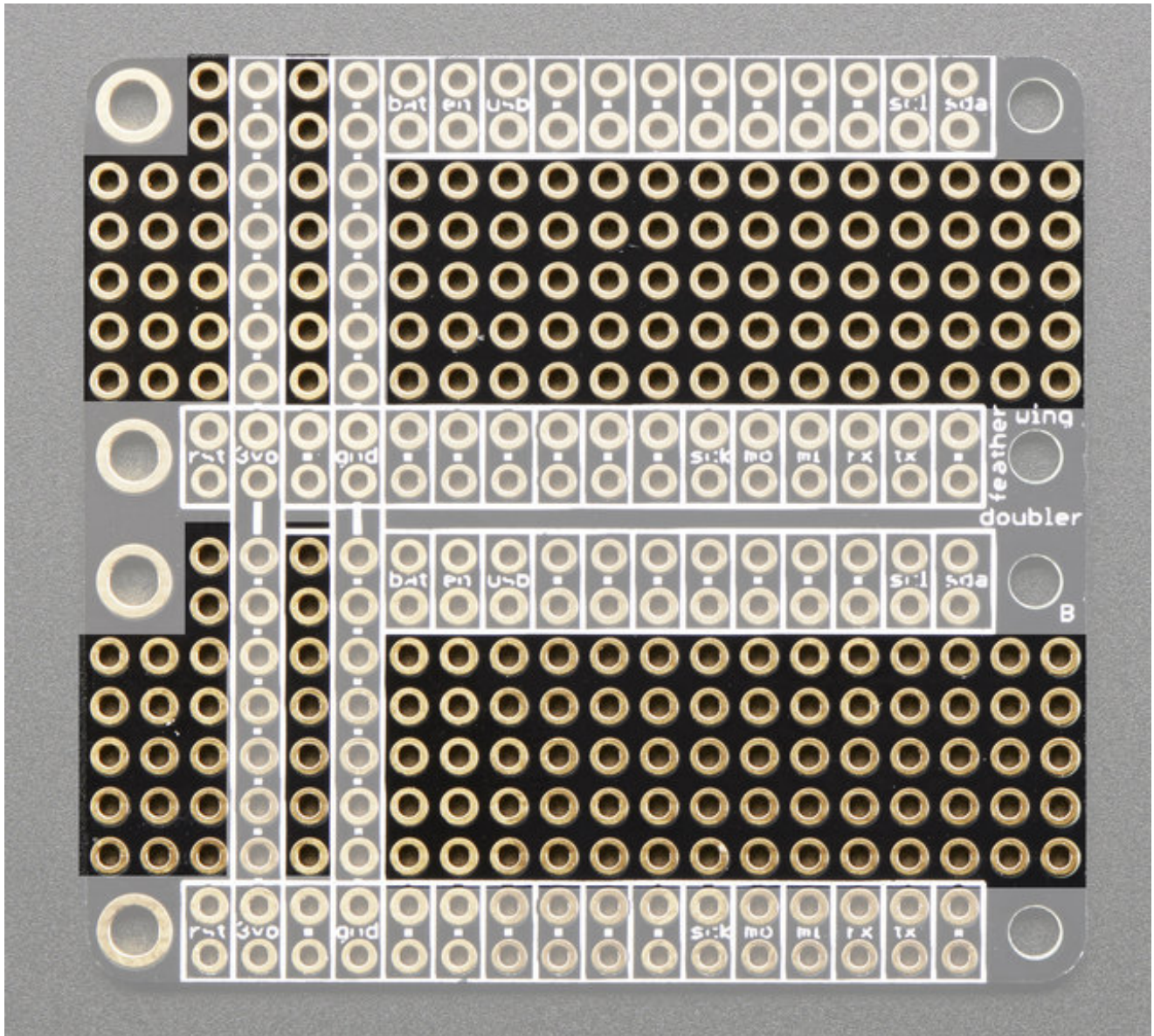
## Proto Grid

---

Finally, there's a full set of prototyping grid, each hole is 0.047" diameter

Note there's a thin strip of proto holes in between the 3V and GND rails

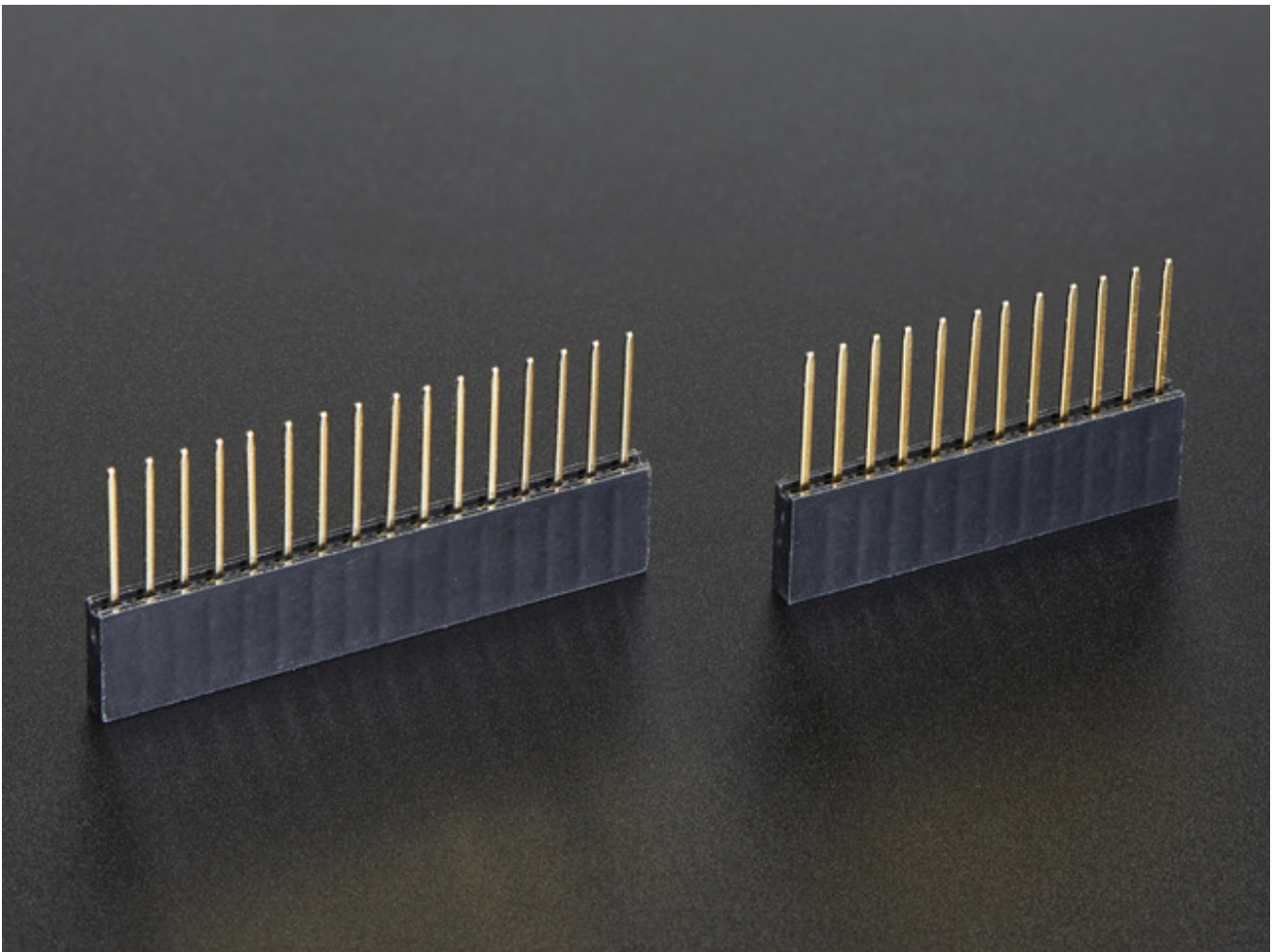




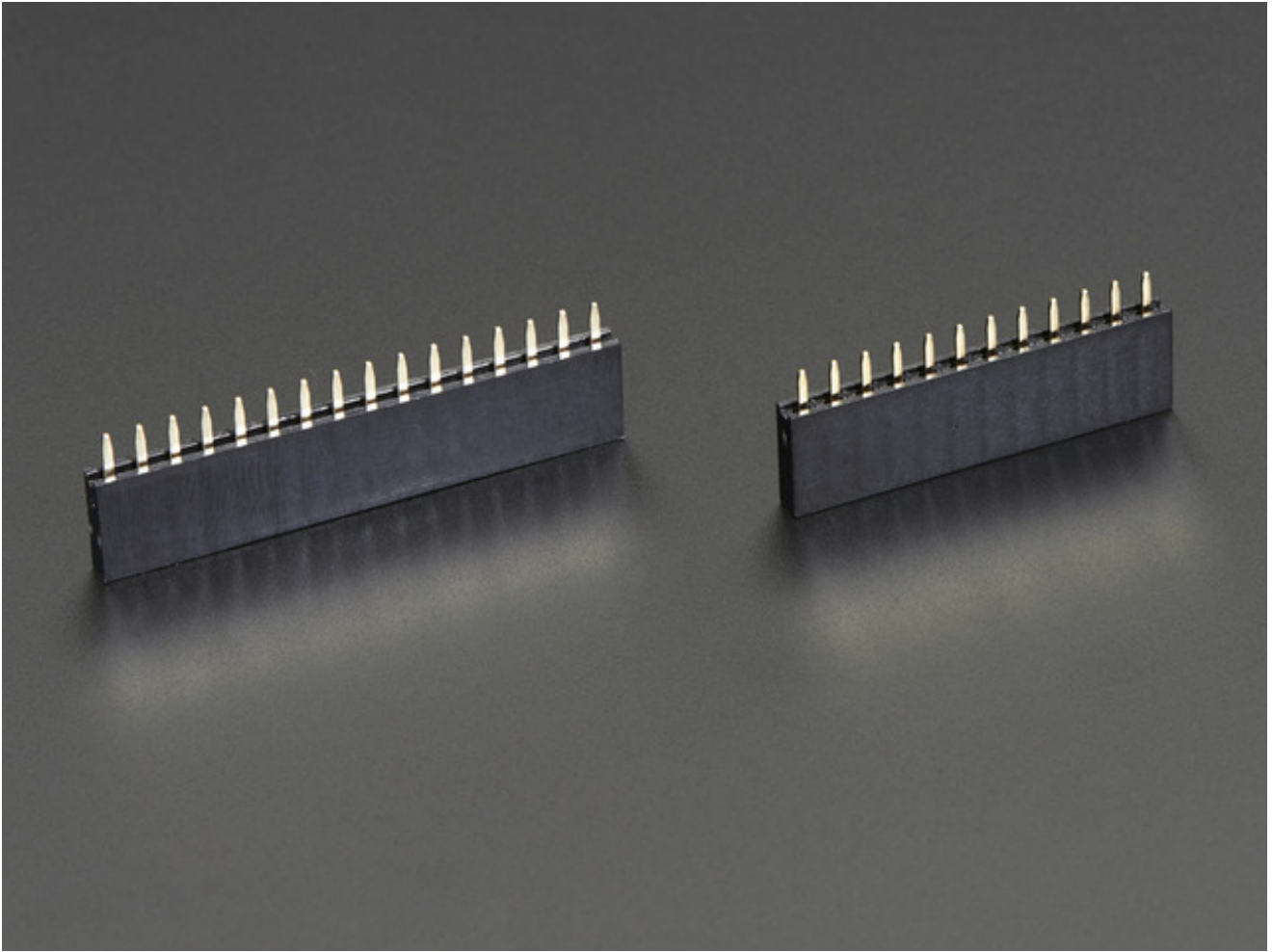


# Assembly

When putting together your Proto or Doubler Featherwings, think about how you want it to connect, you can use stacking headers:

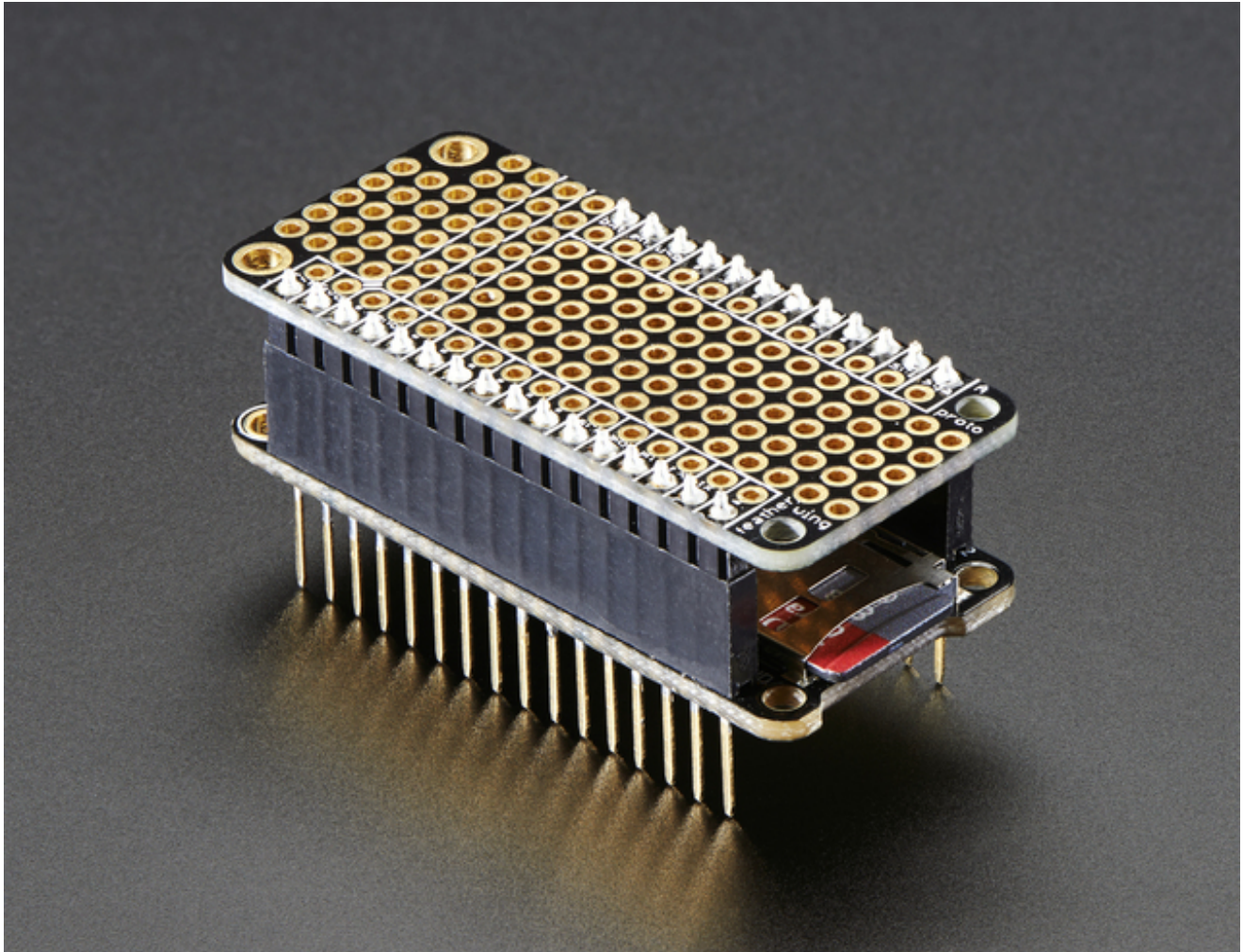


Or plain female socket headers:



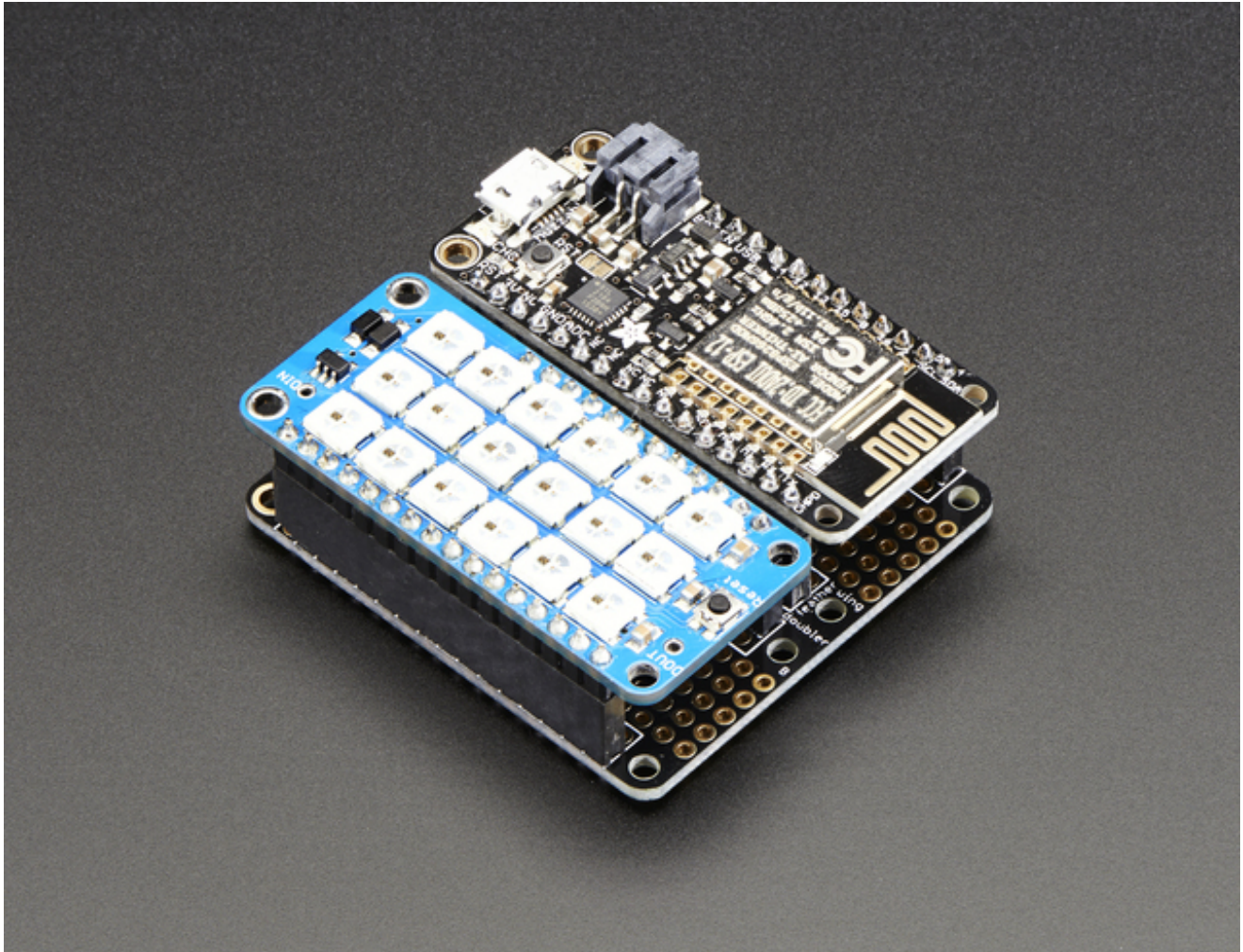
The most common method of attachment for the Proto is putting stacking or female headers on the Featherwing and then putting the Proto on top:





But don't forget, you can **also** put the stacking headers on the Proto wing and stack the **Feather on top of it!**

For the Doubler, you can use it side-by-side



By soldering female or stacking headers onto the doubler, but you could also have multiple stacking wings.

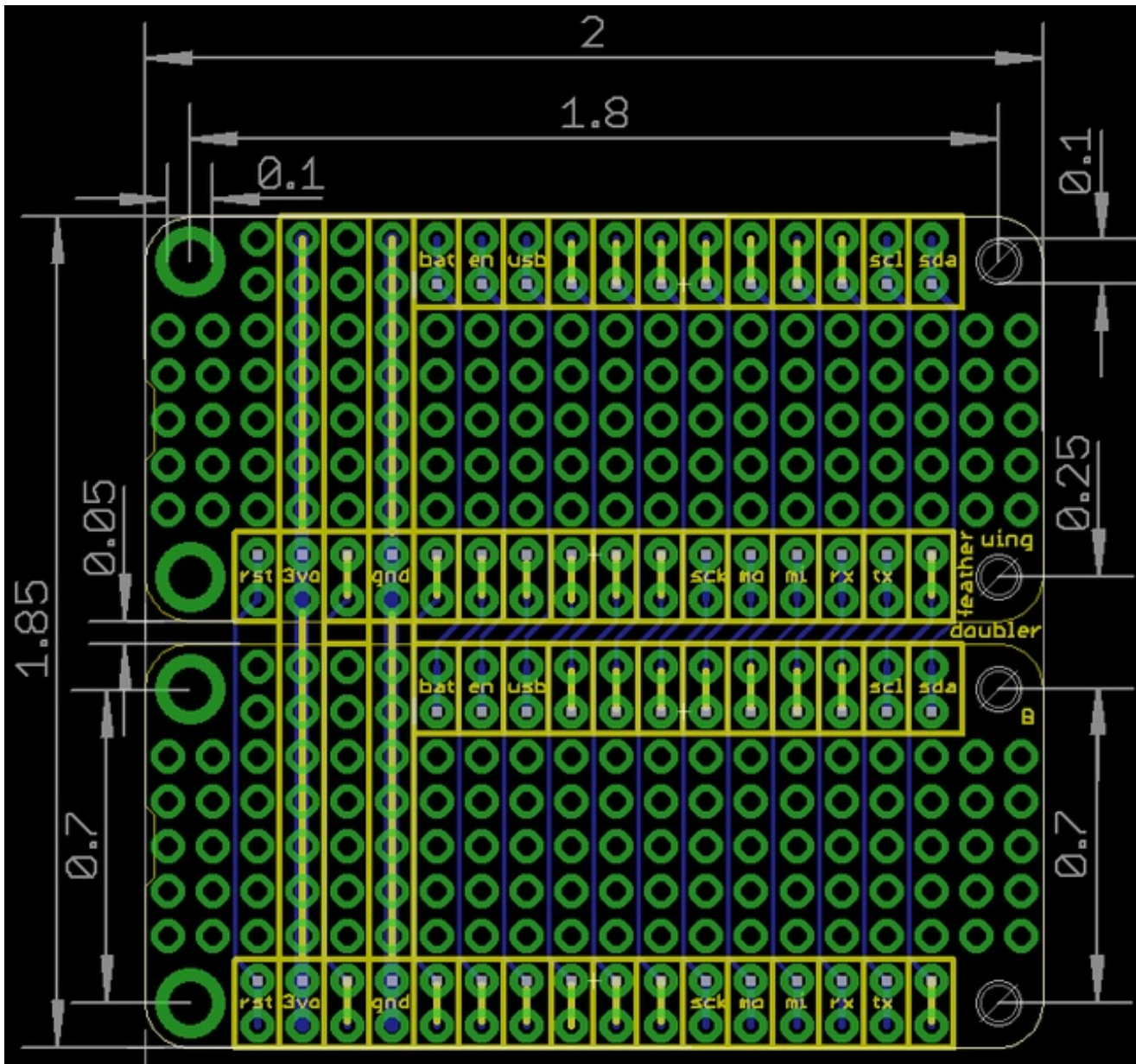


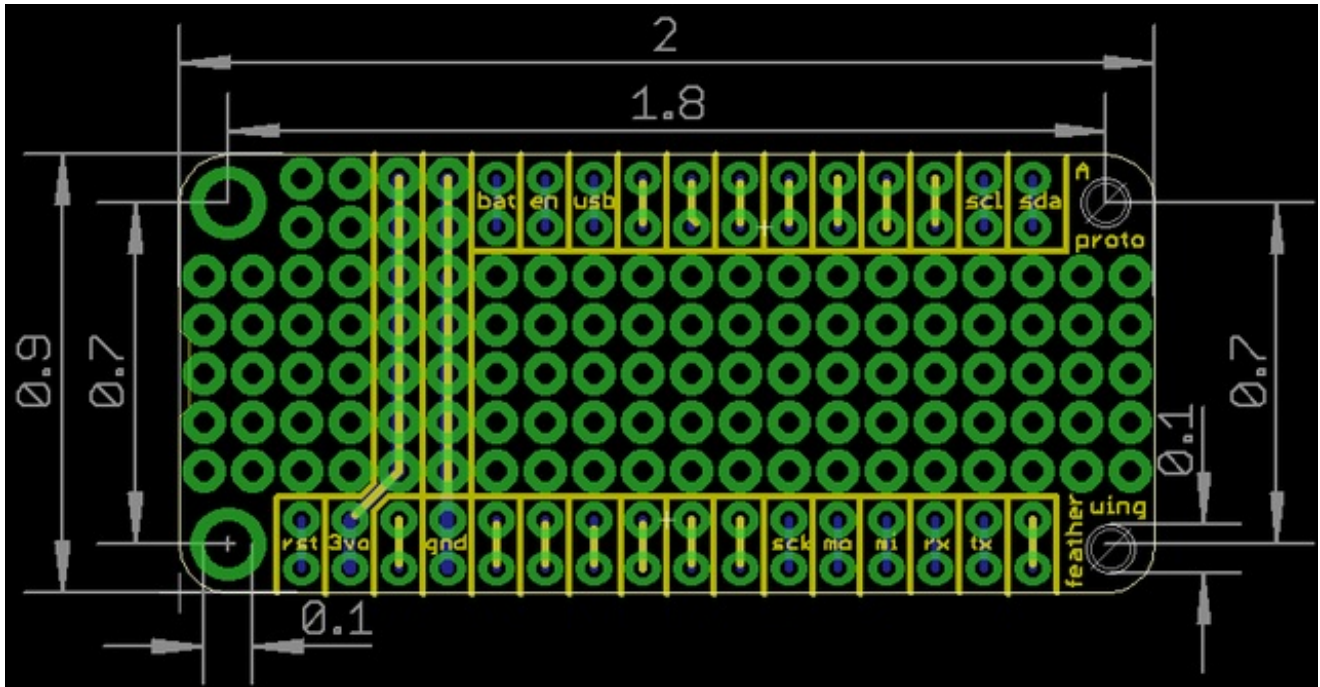
## Downloads

Original EagleCAD files can be found here, if you want to make your own custom featherwings, simply remove the prototyping holes you dont need (<http://adafru.it/kC0>)

## Fabrication prints

Dimensions in inches







# Mouser Electronics

Authorized Distributor

Click to View Pricing, Inventory, Delivery & Lifecycle Information:

[Adafruit:](#)

[2884](#) [2890](#)