

# EMG125-B24


Order No.: 2947996

The illustration shows EMG 125-LG, with closed terminal space




<http://eshop.phoenixcontact.de/phoenix/treeViewClick.do?UID=2947996>

Custom circuit module, consisting of housing, MKDS 3 connection terminal blocks and PCB

| Commercial data          |  |
|--------------------------|--|
| GTIN (EAN)               | <br>4 017918 083106 |
| sales group              | F001   |
| Pack                     | 2 pcs.   |
| Customs tariff           | 85369010   |
| Catalog page information | Page 575 (CC-2011)   |

**Product notes**

WEEE/RoHS-compliant since:  
07/06/2005



<http://www.download.phoenixcontact.com>  
Please note that the data given here has been taken from the online catalog. For comprehensive information and data, please refer to the user documentation. The General Terms and Conditions of Use apply to Internet downloads.

| Technical data   |                                |
|------------------|--------------------------------|
| <b>General</b>   |                                |
| Housing type     | Component housing              |
| Housing material | Polycarbonate fiber reinforced |
| Color            | green                          |

#### Dimensions / positions

|                     |        |
|---------------------|--------|
| Length              | 75 mm  |
| Width               | 125 mm |
| Number of positions | 48     |
| Pitch               | 5 mm   |

#### Technical data

|   |                     |
|---|---------------------|
| Ambient temperature (operation)                               | -40 °C ... 125 °C   |
| Inflammability class acc. to UL 94                            | V0                  |
| Power dissipation at 20°C in the horizontal mounting position | 9.5 W 11 W 7.5 mm   |
|   | 10.6 W 12.4 W 15 mm |
|   | 11.6 W 13 W 52 mm   |

#### Connection data

|  |                     |
|--|---------------------|
| Conductor cross section solid min.     | 0.2 mm <sup>2</sup> |
| Conductor cross section solid max.     | 4 mm <sup>2</sup>   |
| Conductor cross section stranded min.  | 0.2 mm <sup>2</sup> |
| Conductor cross section stranded max.  | 2.5 mm <sup>2</sup> |
| Conductor cross section AWG/kcmil min. | 24                  |
| Conductor cross section AWG/kcmil max  | 12                  |

#### Accessories

| Item            | Designation | Description   |
|-----------------|-------------|---|
| <b>Assembly</b> |             |   |
| 2941510         | EMG-KA      | Terminal block/screw cover, set consisting of 50 strips each for terminal blocks and screw openings, 1 strip covers 12 terminal points. |

#### Marking

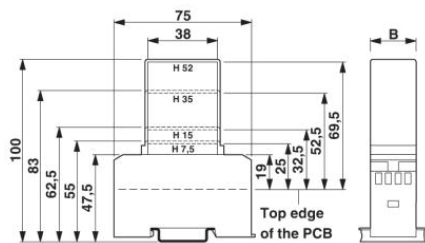
|         |            |                                   |
|---------|------------|-----------------------------------|
| 2947035 | EMG-GKS 12 | Equipment marker, width 12 mm     |
| 2941594 | EMG-GKS 22 | Equipment marker tag, width 22 mm |

**Additional products**

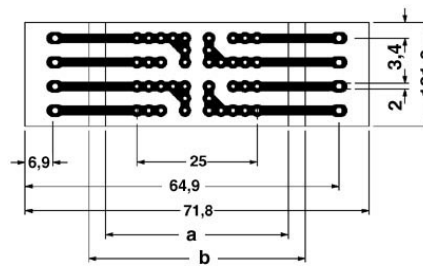
| Item            | Designation         | Description  |
|-----------------|---------------------|--|
| <b>Assembly</b> |                     |  |
| 2943194         | EMG125-H 7,5MM KLAR | Covering hood, for the contact and dust-protected encapsulation of the components, in transparent design. Height: 7.5 mm               |
| 2943181         | EMG125-H 15MM KLAR  | Covering hood, for the contact and dust-protected encapsulation of the components, in transparent design. Height: 15 mm, width: 125 mm |
| 2943518         | EMG125-H 52MM GN    | Covering hood, for the contact and dust-protected encapsulation of the components, in green design. Height: 52 mm, width: 125 mm       |

**Diagrams/Drawings**

Dimensioned drawing



1 = Top edge of the PCB  
 B = Housing width



Pitch 5 mm  
 a = Area for mounting components, 38 mm in the hood  
 b = Area for mounting components, 45 mm in the housing

**Address**

PHOENIX CONTACT Inc., USA  
586 Fulling Mill Road  
Middletown, PA 17057, USA  
Phone (800) 888-7388  
Fax (717) 944-1625  
<http://www.phoenixcon.com>



© 2011 Phoenix Contact  
Technical modifications reserved;