

## ST-OE2-120AC/ 48DC/100


Order No.: 2911731

The illustration shows version ST-OV 2- 5 DC/ 48 DC/100

<http://eshop.phoenixcontact.de/phoenix/treeViewClick.do?UID=2911731>

Pluggable input optocoupler, with light indicator and protection circuits in the input and output circuits, input: 120 V AC, output: 8 - 48 V DC/ max. 100 mA, can be plugged on basic termination blocks

### Commercial data

GTIN (EAN)	
Note	Made-to-order
sales group	G100
Pack	10 pcs.
Customs tariff	85364900
Catalog page information	Page 93 (IF-2005)

### Product notes

WEEE/RoHS-compliant since:  
09/05/2006



<http://www.download.phoenixcontact.com>  
Please note that the data given here has been taken from the online catalog. For comprehensive information and data, please refer to the user documentation. The General Terms and Conditions of Use apply to Internet downloads.

## Technical data

### Input data

Nominal input voltage $U_N$	120 V AC $\pm$ 10%
Switching threshold "0" signal in reference to $U_N$	$\leq$ 0.4
Switching threshold "1" signal in reference to $U_N$	$\geq$ 0.8
Typical input current at $U_N$	5 mA
Typical response time	10 ms
Typical turn-off time	10 ms
Status display	Yellow LED
Type of protection	Protection against polarity reversal Surge protection
Protective circuit/component	Polarity protection diode RC element
Transmission frequency	10 Hz

### Output data

Output nominal voltage range	8 V DC ... 48 V DC
Limiting continuous current	100 mA
Voltage drop at max. limiting continuous current	0.9 V
Output circuit	2-wire, floating
Type of protection	Protection against polarity reversal Surge protection
Protective circuit/component	Polarity protection diode

### General data

Width	14.6 mm
Height	33 mm
Depth	66.5 mm
Test voltage input/output	2.5 kV AC
Ambient temperature (operation)	-20 °C ... 60 °C
Ambient temperature (storage/transport)	-20 °C ... 70 °C
Mounting position	Any
Standards/regulations	DIN VDE 0110

**Certificates / Approvals**

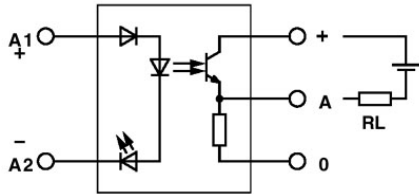


Certification

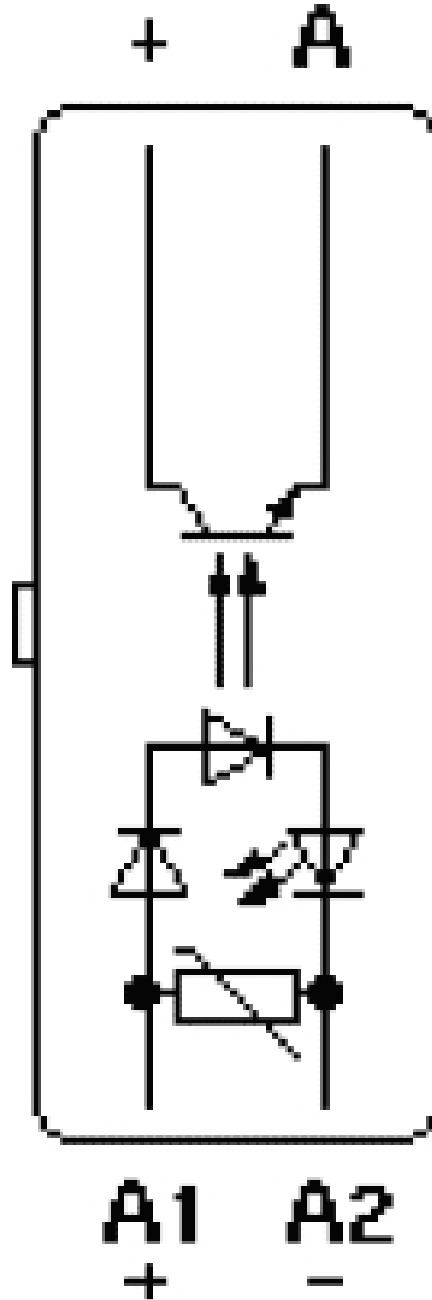
GOST

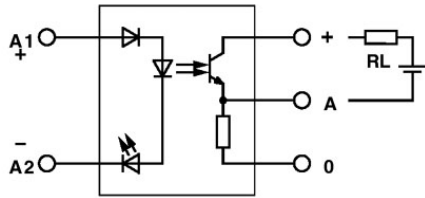
Diagrams/Drawings

Circuit diagram



Output: 2-wire, floating, plus switching





Output: 2-wire, floating, minus switching

**Address**

PHOENIX CONTACT Inc., USA  
586 Fulling Mill Road  
Middletown, PA 17057, USA  
Phone (800) 888-7388  
Fax (717) 944-1625  
<http://www.phoenixcon.com>



© 2011 Phoenix Contact  
Technical modifications reserved;